

COLLISION INJURES MAN AND MACHINES

Alphonse VonDoninck is in the hospital with a broken arm as a result of a collision of his motorcycle with the Overland car driven by Chas. Cleveland. The collision happened Wednesday morning at the 12-mile corner, when Mr. Cleveland was coming home from Fairview. Mr. Von Doninck was going west on the Baseline road. The Baseline store at the corner cuts off the view of the road and makes rather a dangerous crossing for all cars going west and south. Mr. Cleveland says that he was going slowly and just had time to wonder why way the motorcycle was going to turn whether behind the car or ahead of it to avoid a collision, when the two cars struck. Mr. Von Doninck evidently saw the car as he was nearly upon it and swerved sharply to the left to avoid hitting it. The condition of the motorcycle indicates that the former did not hit the car at right angles which would have undoubtedly wrecked the motorcycle but at an angle. The weight of the lighter machine and the speed at which it was going was sufficient to crush the running board in and to buckle the front door. It appears that the handle of the motorcycle struck the center of the door and it is caved in beyond any chance of closing the door until it has been to the repair shop. The entire side of the car is wrenched out of line and the steel work around the back of the front seat was doubled up by the force of the blow. It was said that the car was shoved along the pavement several feet. The inside handle on the front door struck Mr. Cleveland on the side and dazed him for a moment as the blow struck just under the heart. Mr. Von Doninck had his arm broken between the elbow and the wrist. Both bones were broken and it was necessary to put in a silver plate to hold the bones. Mr. Von Doninck is still in the hospital. Mr. Cleveland is none the worse for his accident and the car is being driven around town but its appearance is considerably affected from the left hand side at least. The motorcycle is the less damaged as it has very few marks or cuts to show that it was in a wreck. The damage is of a minor nature it was stated at the Bakery, where Mr. Von Doninck makes his home.

CARS WILL SLOW DOWN AT DANGEROUS CROSSING

All trains on the Bull Run line must slow down to 6 miles an hour on the Main street crossing in Gresham, according to word recently received from officials of the Portland Railway Light and Power company, by Attorney C. G. Schneider, recorder of the town of Gresham. Both freight and passenger trains will be required to observe the new ruling, which is expected to greatly reduce danger of accidents at the crossing. The citizens of Gresham are asked to cooperate with the railroad company in its effort to meet the situation.

This action on the part of the railroad company follows action which was taken by the town council in its May meeting, when an ordinance was ordered drafted making it necessary for each car to come to a dead stop 50 feet from the crossing.

Snashalls Enjoy Trip to Sandy

Mr. and Mrs. H. W. Snashall made a trip through Sandy last Wednesday and on their way home came by the road from Sandy to Dodge Park. Mrs. Snashall declares that she never saw more beautiful camping or picnic grounds but profiting by their experiences one should have the gasoline tank full as the hills are steep and it takes an expert to back a car on those steep grades. They were stalled on one of the steep grades because there was not enough gasoline in the tank to carry them up the hill. Soon five other cars were lined up because they could not get by. One of the men volunteered to turn the car around and back it up the hill, a feat which he accomplished although the road was too narrow for the cars to pass.

All car owners, especially Ford owners, should look to the gasoline supply before attempting the hills.

Which road? You must choose one; carelessness with fire or forest protection. One leads to destroyed resources, lost lives and homes, diminished payrolls, dwindling markets, higher tax—your loss; the other to life and property safe, market for labor and crops, pleasant camping places, fish and game preserved, community wealth—your gain. Take no chances with matches, cigarettes, camp fires or slashing fires. Put them out.

SEASIDE COTTAGES FOR RENT—Anyone desiring to rent a cottage at Seaside by the week or longer, for reservations and particulars, inquire J. G. Mast.

GRESHAM GIANTS TO MEET ARLETA SUNDAY

The Gresham Giants met defeat on last Sunday at the hands of the fast Honeyman Hardware Company team by a score of 7 to 4. It was a tight game and Gresham leading 3 to 2 until the 8th when errors by Gresham let in three runs for Honeyman. They put across two more in the ninth and Gresham rallied and put across one more. Stockton pitched great ball for Gresham.

The Gresham Giants will tangle with the Arleta baseball club Sunday afternoon at the new baseball grounds in Gresham near the High School. The Giants played Arleta earlier this season and were defeated by a bum decision by the umpire. The score in that game was 3 to 2 and a better game is looked for this time as both teams have added new strength and the Giants are out to wipe out the sting of that defeat by the umpire.

Gillis vs. Springdale

Baseball game Sunday afternoon, June 26, at Gillis station, Gillis vs. Springdale. —Adv.

ERNEST QUESINBERRY PITCHING FOR BEAVERS

"Doc" Ernest Quesinberry, Gresham young man and formerly a member of the pitching staff of the U. S. baseball team, pitched for the Portland Beavers against San Francisco, yesterday. "Doc" pitched great baseball and was in the lead 3 to 2 until the 8th inning when the Seals got him by bunting and put across two runs. Mgr. McCredie says that "Doc" has the makings of a great pitcher.

Johnstown Helps Pueblo

Appreciating the situation of flood sufferers in Pueblo as but few other American communities can, the Johnstown Chapter of the American Red Cross was one of the first to answer the appeals of President Harding and Governor Shoup of Colorado, for financial assistance to the destitute citizens of Pueblo. Upon receipt of the appeals, the Johnstown Red Cross Chapter sent \$2,000 to be used in relief at Pueblo. The flood of 1889 which inundated Johnstown with a heavy loss of life and property was one of the most disastrous in the history of the United States.

Officers' Wives Aid Destitute

American women in Coblenz, the wives of members of the staff of the Army of occupation, by way of aiding American Red Cross production of garments for the suffering and destitute children of Europe have made up and shipped to the Paris headquarters of the Red Cross two boxes of children's clothing. This contribution was entirely voluntary on the part of these American women, whose proximity to the acute situation in Europe as regards to child welfare, resulted in a desire to do their share toward the alleviation of this distress.

Why Railroads are Poor

A beautiful example of what happens when railroad rates are high is this one we have just heard about Texas onions. Texas is a great State, you know, for this bulb of the lily family which has an aroma all its own.

In former years the Texas producer sent his onions to the eastern markets by railroad. Along came the increased railroad rates and he found that it cost him 83 cents a crate of 50 pounds to ship to New York by freight car.

Just about that time the Texas producer also learned that he could ship from Galveston to New York by boat for 56 1/2 cents per crate, a clear saving of 26 1/2 cents per crate. Of course like all the rest of us economists of the plain life, the Texas farmer jumped at the lower rate, with the result that what might have been 700 carloads of onions by railroad just naturally floated into New York City by coastwise steamer.

There are several crates in a carload, and accordingly the railroads lost nearly \$200,000 in freight income figuring at the Boat Rate per crate. It is clear as daylight that similar things are happening all along the line. Many people are shipping by boat when they can, and shutting down factories where they have to pay the high railroad rates on articles which naturally bring only small profits when delivered somewhere else and sold.

We hear nothing but shrieks from the railroads about their profitless business. When they and their employees realize that lower rates will mean more traffic and consequently a much greater income, the railroad business will again pick up, and dividends with it. And incidentally, lower railroad rates will also mean lower cost of living, a point the railroad workers might well consider.

W. C. LAWRENCE FIVE-YEAR DIRECTOR OF UNION HIGH SCHOOL'S NEW BOARD

K. A. Miller, clerk of Union High School district has received the full list of votes cast for the directors of Union High School number 2, and the unofficial figures give W. C. Lawrence of Lynch a lead of six votes over his nearest opponent which gives him the 5 year term. Dr. A. W. Botkin of Gresham comes second, H. P. Christensen third, C. H. Johanson fourth and Mark Nickerson, fifth.

The complete vote cast by districts is as follows: A. W. Botkin, Gresham 46, Terry 33, Lynch 12, Orient 9, Hillsview 6, Victory 13, Powell Valley 17, total 136.

Mark Nickerson: Gresham 15, Terry 35, Lynch 5, Orient 10, Hillsview 4, Victory 14, Powell Valley 3, total 86.

W. C. Lawrence: Gresham 36, Terry 33, Lynch 33, Orient 6, Hillsview 6, Victory 9, Powell Valley 19, total 141.

C. H. Johanson: Gresham 31, Terry 23, Lynch 12, Orient 11, Hillsview 3, Victory 12, Powell Valley 18, total 110.

Gustaf Noreen: Gresham 21, Terry 10, Lynch 2, Orient 4, Hillsview 7, Victory 13, Powell Valley 15, total 72.

H. L. Douthitt: Gresham 19, Terry 10, Lynch 5, Orient 7, Hillsview 3, Victory 18, Powell Valley 2, total 64.

H. P. Christensen: Gresham 28, Terry 31, Lynch 10, Orient 9, Hillsview 6, Victory 15, Powell Valley 19, total 118.

The board of directors of Union High will meet Saturday evening to canvass the votes and give the official figures. The margin between the different totals is large enough that it makes a change in the standing of the different men very unlikely although the totals might possibly be changed slightly by the official count.

The lack of votes in his home district lost Mr. Noreen his place on the board as there were only seven votes cast in his district. In Terry

however, the voters turned out well and with 35 votes for their candidate, won a place on the board. It was not thought likely that Terry being one of the smaller districts and having a new man up for election could swing enough votes to win the election but they demonstrated what a small district with a live interest in election can do.

Counting out the votes cast in their home districts Mr. Noreen led Nickerson by 14 votes, but in the total votes cast the home district vote reversed the situation and Nickerson led by 14 votes.

In Lynch a heavy vote was cast for the home candidate but the other candidates all received light votes. 12 votes were the highest number cast for any other candidate. Whether this was a clever bit of political work or not can not be determined but it resulted in the same thing, a piling up of a total for Mr. Lawrence without increasing the votes for the other candidates.

As a contrast to this the votes cast by Gresham and Terry are exceptionally well distributed. Terry folks are probably congratulating themselves on having picked the winners since their five highest candidates stood highest in the total vote cast although the order of votes was not the same.

Next year there can only be three candidates as no district can have two directors at the same time. This will leave the contest among the three districts, Victory, Hillsview and Terry whose director is in for only one year. This will make an interesting contest as all the districts will vote on the three candidates.

The new method while creating a greater interest in the election of the board than the old method does the one thing that many people feel should not be done, puts the matter into the political field and gives opportunity for all sorts of political schemes.

H. E. COSBY WILL DISCUSS MANY PROBLEMS

Poultrymen are looking forward to the demonstrators to be given by H. E. Cosby, the Poultry Specialist from the O. A. C. at the four demonstration farms in this county.

Feeding and caring for young chicks so they will develop into the best producing stock at the right season will be the main subject of the discussion. Other problems will be discussed however and all poultrymen are urged to attend.

The schedule of the meeting places is as follows:

Mrs. Anna Schiller farm, one-half mile east of Gresham, 10 a. m., June 28th.

A. L. Davies farm, at Springdale on the Columbia Highway, 2 p. m., June 28th.

C. N. Taylor farm, on Pleasant View Avenue one-half mile south of Linneman Station, 10 a. m., June 29th.

D. B. Seidel farm, on Buckley Avenue, one-half mile south of Base Line road, 2 p. m., June 29th.

Keep in style. Try one of those "classy-fed" ads.

LEGION TO HOLD MEMORIAL SERVICE

Special memorial ceremonies in honor of the national commander of the American Legion, Fred William Galbraith, who was recently killed in an automobile accident, will be held by the local Legion at its regular meeting on Tuesday, June 28. Commander Galbraith was the third commander of the American Legion, the second to be regularly elected since the organization of the group. His death coming as it did suddenly brought great sadness to the loyal friends and members of the Legion. The funeral was held in Cincinnati, Ohio, on June 11th.

The charter will be draped in black and the memorial ceremonies of the Legion will be observed.

The regular business session will be held also. All Legion men are requested to attend.

Studio Closed For Month

My Studio will be closed from July 6 to August 6. Patrons desiring photographs will please arrange their appointments accordingly.

MAXWELL SCHNEIDER.

Don't slight yourself by slighting the want ads.

IOWA MAN IS NEW G. C. P. CHAIRMAN



John T. Adams

A central western man is the new chairman of the Republican National Committee. He is John T. Adams of Iowa. Four years ago he was the candidate against the retiring chairman, Will H. Hays, who is now Postmaster General.

LOCAL BAPTIST CHURCH TO HAVE NEW PASTOR

Rev. Jesse E. Brown who has been pastor of the Bethel Baptist church for several months, has tendered his resignation to the local congregation and it has been accepted. Rev. Brown is planning on continuing his studies at school in preparation for future work.

In regard to the change Rev. Brown says: "When I came here several months ago, it was to supply a great need. The church is in a position now to take another step forward. That step is the securing of an efficient minister who can and will push the work with vim, prayer and the power of God. The church has the assurance of securing such a man."

Sunday morning, June 26, Rev. Brown will preach his farewell sermon. The topic will be "Heeding the call of Christ." In the evening the topic will be "Who can Forgive Sin?"

Books For Polish Students

In expanding its work of aiding devastated regions of Europe to provide greatly needed school libraries, the Junior American Red Cross has made an appropriation of \$2,110 for this purpose in Poland. Carefully selected small libraries and school reference books will be supplied where they are needed by Polish schools and orphanages. Children's libraries are also being presented by the Junior American Red Cross to the more destitute districts of France and Italy.

More Memorial Trees

The custom of planting trees as memorials to those who gave their lives in the World War has been expanded to include women, in Des Moines, Iowa. Representatives of the American Red Cross Nursing Service and other nursing associations of the State have planted several trees on the grounds of the State Capitol building. One of the trees was planted as a memorial to Miss Jane A. Delano, former director of American Red Cross Nursing, who gave her life in service. This form of memorial has been commended by Miss Clara D. Noyes, present director of American Red Cross Nursing Service.

TO PROBE FARM PRICES

That republican leaders in congress intend to take no chances in their efforts to assist the farmers of the country is evidenced by the prompt passage through the House of the measure creating a joint commission to investigate the causes of the difference paid to tillers of the soil for their products and the price ultimately paid for those products by the consumer.

"The passage of the resolution," said Representative Strong of Kansas, "was requested by the congress of farm organizations held here in the city of Washington in April last. Representatives of sixteen farm organizations met here in conference. They knew that the farmers are receiving about 10 or 15 per cent of the price that the American people are charged for their commodities. They knew that the prices of farm products had been deflated, but that all supplies and materials that the farmer buys were still carrying the war price. They knew that credits had been restricted to agriculture, that cattlemen were being sold out, and the stock herds sacrificed. They knew that cattle, sheep and hogs, corn and wheat, oats, cotton, butter, eggs, and all farm produce which they were being forced to sell at prices far below the cost of production were still being sold to the consumer at prices they could not afford to pay, which robbed the producers of the sympathy which would otherwise result in protecting them from ruin.

LOCAL GIRLS RELATE O. A. C. EXPERIENCES

Corvallis, Ore., June 21.—Editor Outlook: We thought it might be of interest to the readers of the Outlook to know what we are doing at the O. A. C. summer school.

From 8 to 12, classes are held. We girls have particularly enjoyed the classes in color harmony by Miss O'Neil; canning of peas under the direction of Miss Cowgill and Home nursing, by Mrs. Haight. One morning we spent an hour making organ-dy flowers which we enjoyed very much, under the direction of Miss McFaul. The boys spend the morning with livestock. We have general assembly from 1:30 to 2:30. Some of the speakers are: O. M. Plummer, H. Bushnell, Asst. Supt. Whitney of Portland; N. C. Maris, Dr. Caroline Hedges. During this assembly much enthusiasm is shown in yells and songs. Each county has its own yell leader.

The state prize winners give short talks about the work which they did in various clubs. The following are the names of some of the Multnomah prize winners that spoke: Wilma Chase, Carl Zimmerman, Grant Mc Millan and Ray Lasley. After assembly from 2:30 to 6:00 we have swimming, basket ball, tennis and baseball.

We find that the paper dress forms like we made in Division III are very popular at the college. Miss Ward the home demonstration agent from Washington, D. C., says that the women of Minnesota have used four miles of tape in the making of dress forms. In Montana also they are very popular.

Every evening something special is planned for us either parties, lectures or music.

The boys occupy the third floor and the girls the other floors of Waldo Hall.

There are 225 state winners and club members registered at Waldo Hall, Multnomah ranks first in the number of delegates here with 31 members, and Klamath county second with 29 members.

The campus grounds are very pretty. There are forty-five buildings on the campus, which covers forty acres.

Everyone is enjoying the summer school and we want to work and earn enough money to bring us back to the O. A. C. summer school next year. We wish that every boy and girl in the club work might have the chance to come.

INA SMITH, HELEN MAXWELL.

RED CROSS ASSISTS PUEBLO FLOOD VICTIMS

With emergency relief accomplished the American Red Cross is well started on the long and exacting task of rehabilitating families impoverished in Pueblo's flood, it is stated at National headquarters.

"An impression seems to have been created by a report to the War Department that Pueblo's needs have been fully met," said Dr. Livingston Farrand, chairman of the central committee.

"This is true only in regard to emergent distress. There never has been a serious food problem and the flood victims have been provided temporary shelter. The big task of the Red Cross therefore is the rehabilitation of families who have lost their homes and all their possessions. This is a long and exacting process and its accomplishment involves the erection of small homes and the provision of essential furnishings. Our executives are on the scene of the disaster working with the citizens.

"A committee of Pueblo citizens estimate the cost of this imperative relief at \$500,000 which can only be defrayed through the generosity of the American people."

Creamed Cheese and Egg

Three hard-boiled eggs, 1 tablespoonful flour, 1 cup milk, 1/2 teaspoonful salt, speck of cayenne pepper, 4 slices of toast, 2 or 3 cheeses (from two-thirds to one cup). Make a thin white sauce with flour, milk and seasoning. Add the cheese and stir until melted. Chop the whites of the eggs and add them to the sauce, pour over the toast; then cut the yolks in small pieces and sprinkle over the whole.

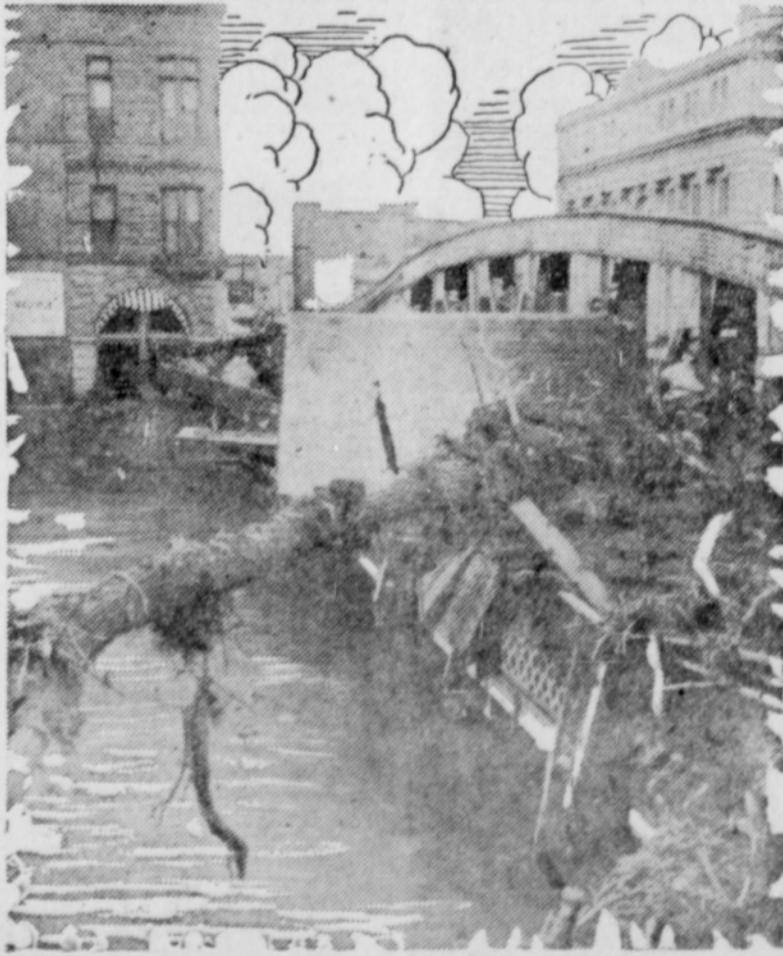
Cheese Omelet

Two eggs, 2 teaspoonful milk, 4 tablespoonfuls cheese, 1/2 teaspoonful butter, 1/4 teaspoonful salt, dash of pepper. Cream the cheese until soft, add milk, then the well-beaten yolks of the eggs, and then the stiffly beaten whites. Place a little butter in an iron skillet and when hot pour in the omelet. Cook until brown, then place under flame in an oven until slightly dried out on top, turn, and serve on hot platter. Season with salt, pepper and butter.

Running brook, cooling breeze—fire brand, ghostly trees.

Drop onto a few of the bargains offered in the want columns.

TREES, HOUSES AND BARN IN DEBRIS OF FLOOD SWEEP PUEBLO



Trees, houses, barns, railroad cars and bridges visited the downtown section of Pueblo, Colo., drifting against big modern office buildings where they lodged, in the disastrous flood which cost a tremendous loss of life and property. This picture is one of the first from the water-swept city and shows a part of the debris left in one of the principal streets as the cloud-burst waters receded.