

An Appreciation

To all our Friends, and to all who may become our friends as the days go by, we wish

A Merry, Merry Christmas

And may the New Year bring to each of you a Full Measure of Happiness and Prosperity.

The Troutdale State Bank

BY ITS OFFICERS AND DIRECTORS

CHARACTER OF THIS LOCALITY

IS BEST ON EARTH

H. R. Gebhardt, pastor of the Zion Evangelical church, is a scholar in both German and English languages. He often preaches and conducts services in English. Moreover he writes easily either language. The splendid article which follows is evidence of the fact that he is appreciative of the pleasant and progressive local conditions and knows how to describe them.

In this beautiful and wonderful Northwest there is a community which loyal and enthusiastic citizens at various times have designated as the "twentieth century Eden" or "the best place on earth." It is a community having its own peculiar advantages, opportunities and privileges. These are very appropriately suggested by the letters composing its name and will serve present purposes best in their reverse order.

M may suggest many things—besides miserliness. First, to those who have lived in this community for some time, it is alive with memories—Indians, forests, wild animals, the good old days of once-upon-a-time. It also points to manufacturing of some importance if making drag saws, canning and preserving fruits and winning starch of products otherwise almost valueless is of any great importance during these times of high prices. And then it recalls the fact that it is a "land flowing with milk and honey" with the former very much in evidence.

Second, to the newcomer it refers to moisture. This, and the otherwise mild climate, are his chief topics of conversation until he has become "web-footed" and acclimated like the pioneers and veterans of the community.

Third, to such interested in the welfare and upbuilding of the community it touches upon a fact and condition at times somewhat discouraging, viz.: migration. People come and go in this community. But a comparative few have lost their "wanderlust" and found a permanent home here. Many filled with the spirit of romance and adventure fail to remain long enough to realize the bountiful good about them and pass on prompted often only by the illusions of better communities and opportunities.

A immediately suggests agriculture. Potatoes, berries and all the numerous varieties of grains customarily grown in a temperate climate give evidence of the fertility and productivity of the soil.

H is next. It refers to horticulture. Beautiful and richly colored flowers, big juicy fruits, the kinds found on the best markets all over the country, and vegetables of the best quality are cultivated and produced by American and Japanese farmers and gardeners.

S reminds one of the most beautiful scenery. Lying in a bowl-shaped valley at the foothills of the Cascades with the venerable trio of unnumbered centuries—Mt. Hood, Mt. Adams and Mt. St. Helens—in the near distance to the east and the north; with the ever winding Columbia river, and its world-renowned highway, the mecca of all tourists to the Northwest, only four miles to the north, with Portland on the Willamette river, one of the most progressive and rapidly growing cities on the Pa-

cific Coast, twelve miles to the west, and with the rolling plains of the Willamette valley to the south it very favorably compares with many beauty spots in Switzerland according to the verdict of many citizens, natives of that country.

E recalls the educational facilities of the community. Among these are to be found a public grade school and a community high school with a combined enrollment of almost 500, two of the best schools in the state, churches representing some of the best denominations, a library with the liberal support and interest of many citizens and of the county library as its limit, and up-to-date fair and other wide awake organizations.

R, the next letter, is the first letter of religion. There is plenty of religion here, more than some folks realize. But some of it could be purged, intensified and concentrated by the church for the immediate and ultimate benefit of the individual and the community.

G, the capital letter at the beginning of the name, points to God. In view of all these advantages, opportunities and privileges certainly "this is none other than the house of God", a place worthy of the name of Bethel because "surely Jehovah is in this place."

And the name of this community is Gresham.

One new Thor Electric Washing machine at big reduction in price. Frank C. Jones & Co., Electric Bldg.

An Overland 4, Sedan or touring, the ideal Christmas gift. Gresham Overland Co.

Regular meeting of Gresham Lodge No. 125, I.O.O.F., in the Odd Fellows hall, every Thursday evening. Visitors welcome. W. C. McCOLLAUGH, N. G. JACKSON JONES, Secretary.

DISTRIBUTION OF TAXES

IN MULTNOMAH COUNTY

Multnomah county will collect more than twelve million dollars for all purposes during the coming year. For 1920 the amount assessed was \$12,007,732.40, and it is going to be a little more for 1921.

This sum will be divided into separate funds, a little more than one-third going for general state purposes. The remaining less than two-thirds will be paid out for the public schools of the county, for county expenditures, for libraries, rose festival and fairs, for market roads, for Port of Portland, for commission of public docks, for the cities of Portland, Gresham, Fairview and Troutdale, and for the several water and drainage districts. The total to be thus paid out will be more than \$8,000,000.

Aside from the several sums to be spent on the county roads the expenditures in eastern Multnomah will be principally for the district and high schools.

East of Portland there are about thirty school districts with an assessed valuation of more than \$11,000,000. These figures include all valuations of farm, city and personal property. The town of Gresham is assessed for \$703,640, with a tax of \$23,642; Fairview, \$136,725, with a tax of \$3,308; Troutdale, \$86,115, with a tax of \$2,747. The different school districts, including the three

cities above mentioned, are valued and taxed as follows:

Values and Taxes.

Park Rose—Valuation, \$1,325,195; tax, \$43,068.
Gresham—Valuation, \$1,388,260; tax, \$42,058.
Wilkes—Valuation, \$658,375; tax, \$10,132.
Terry—Valuation, \$401,505; tax, \$8,431.
Cedar—Valuation, \$231,880; tax, \$3,756.
Lusted—Valuation, \$239,540; tax, \$3,401.
Fairview—Valuation, \$666,320; tax, \$11,994.
Troutdale—Valuation, \$521,585; tax, \$10,629.
Springdale—Valuation, \$100,260; tax, \$1,533.
Powell Valley—Valuation, \$239,060; tax, \$5,546.
Rockwood—Valuation, \$328,740; tax, \$5,687.
Lynch—Valuation, \$459,890; tax, \$11,077.
Buckley—Valuation, \$224,775; tax, \$3,956.
Hurlburt—Valuation, \$79,820; tax, \$1,955.
Latourelle—Valuation, \$178,815; tax, \$3,379.
Corbett—Valuation, \$276,610; tax, \$6,030.
Russellville—Valuation, \$678,795; tax, \$11,607.
Mountain—Valuation, \$143,455; tax, \$2,610.
Gilbert—Valuation, \$614,405; tax, \$15,298.
Warrendale—Valuation, \$737,745; tax, \$13,500.
Pleasant View—Valuation, \$259,470; tax, \$4,929.
Victory—Valuation, \$99,620; tax, \$1,773.
Brower—Valuation, \$89,745; tax, \$1,606.
Orient—Valuation, \$328,320; tax, \$8,142.
Pleasant Valley—Valuation, \$392,145; tax, \$7,321.
Ames—Valuation, \$40,230; tax, \$881.
Hillsview—Valuation, \$70,390; tax, \$1,745.

These taxes include the maintenance of Union High schools Nos. 1 and 2. For this year the requirements were: No. 1, \$4,196; No. 2, \$21,078.

C. H. LANE

The Watkins Man

WISHES YOU A MERRY XMAS AND A HAPPY NEW YEAR

REMEMBER

When in need of any Watkins' Remedy, or any other article I sell, CALL ME.

Phone 506



Cigars-Tobacco-Candies

Give her a box of Davenport Candy.

He will appreciate a carton of Cigarettes, jar of Tobacco or box of Cigars.

Meals and Short Orders at All Hours of the Day

Withrow's Confectionery

PHONE 201

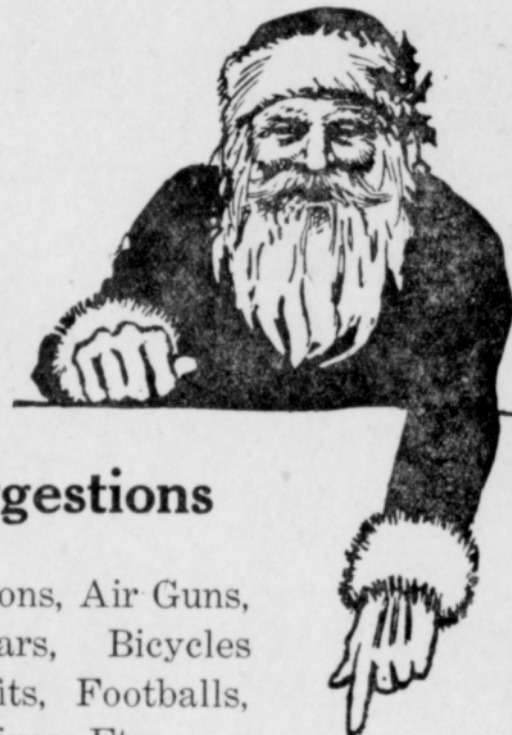
Cor. Main & Powell Sts.

SANTA CLAUS

has established his headquarters in our store.

We will be pleased to have you come in and make your Xmas selections early.

Our prices are as low as possible consistent with quality. All things considered you can buy here cheaper than in Portland.



Here Are Some Suggestions

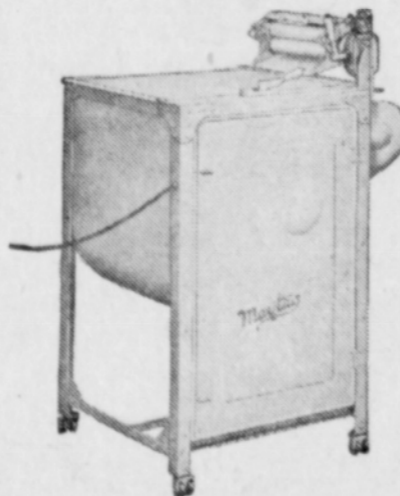


Boys' Wagons, Air Guns, Kiddie Kars, Bicycles, Scout Outfits, Footballs, Pocket Knives, Etc.

Maytag Electric Washers
Electric Heaters
Electric Cookers
Electric Irons
Electric Vacuum Sweepers
Electric Reading Lamps
Flash Lights
Shears
Manicure Sets
Lunch Kits

Oven Glassware
Quick Light Lamps and Lanterns
Aluminum Ware
Alarm Clocks, Watches, Etc.
Carpet Sweepers
Kitchen Ranges
Safety Razors
Carving Sets
Roasters
Fishing Tackle, Guns

Boys' Tool Sets
Bicycle Tires
Thermos Bottles
All Kinds of Tools
Sporting Goods
Andirons
Fireplace Sets
Spark Guards
Sterno Sets
Gas Heaters
Child's Aluminum Sets



FOR CHRISTMAS a Maytag Washer

one of the greatest labor-saving devices for the home on the market. An electric motor washes the clothes and rings them.



We have Pyrex Oven Glassware Dishes and Pans for all purposes.



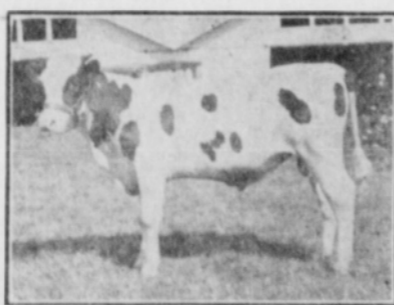
That will cut clear to the point will gladden Mother's heart.

Aldersyde Farm

A. H. BURNS

is still breeding

Registered Holstein Cattle



THE KIND WE BREED He went to his grave undefeated

Our present herd sire is a half brother to the above bull, a son of Segis Walker Matador, probably better known as the \$10,000 bull.

One customer has recently bought a third bull from us. His name will be given on request.

SATISFIED CUSTOMERS ARE OUR BEST ASSET

Come and see us whether you buy or not

PHONE 134

Gresham, Oregon

L. L. Kidder Hdw. Co.



HOME SWEET HOME by Earl Hurst