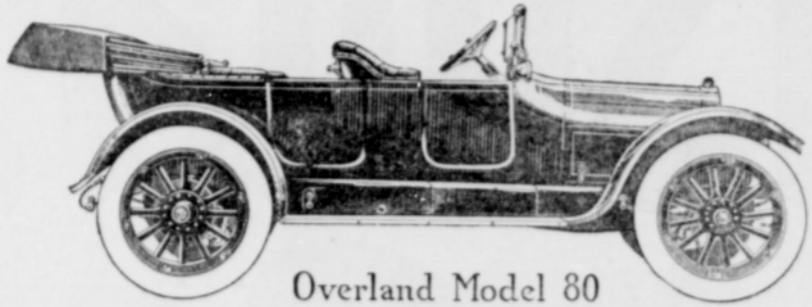


Overland



Overland Model 80

OVERLAND MODEL 80 FIVE-PASSENGER TOURING CAR
Price \$1200 at Gresham
Motor: 4 cylinders, cast singly. Bore: 4 1/4 inches. Stroke: 4 1/2 inches. 35 Horsepower. Wheelbase: 114 inches. Tires: 34x4 inches, demountable rims. Full streamline body. Floating type rear axle. Electric starting and lighting. Left-hand drive. Finish: Brewster green with ivory striping.

The Willys-Overland Co.
TOLEDO, OHIO



Overland Model 80

OVERLAND MODEL 80 TWO-PASSENGER ROADSTER
Price \$1175 at Gresham
Motor: 4 cylinders, cast singly. Bore: 4 1/4 inches. Stroke: 4 1/2 inches. 35 Horsepower. Wheelbase: 114 inches. Tires: 34x4 inches, demountable rims. Full streamline body. Floating type rear axle. Electric starting and lighting. Left-hand drive. Brewster green with ivory striping.

OVERLAND MODEL 81 2-PASSENGER ROADSTER
Price \$910 at Gresham

Motor: 4 cylinders, cast singly. Bore: 4 inches. Stroke: 4 1/2 inches. 30 Horsepower. Wheelbase: 106 inches. Tires: 33x4 inches, demountable rims. Full streamline body. Floating type rear axle. Electric starting and lighting. Left-hand drive. Finish: Brewster green with ivory striping.

OVERLAND MODEL 81 5-PASSENGER TOURING CAR
Price \$955 at Gresham

Motor: 4 cylinders, cast singly. Bore: 4 inches. Stroke: 4 1/2 inches. 30 Horsepower. Wheelbase: 106 inches. Tires: 33x4 inches, demountable rims. Full streamline body. Floating rear axle. Electric starting and lighting. Left-hand drive. Finish: Brewster Green with ivory striping.

6-CYLINDER 7-PASSENGER OVERLAND. MODEL 82
Price \$1650 at Gresham

Motor: 6 cylinders. 45-50 H. P. Wheelbase: 125 inches. Tires: 35x4 1/2 inches. Fisk non-skid, Demountable rims. Full streamline body. Full-floating rear axle. Electric starting and lighting. Left-hand drive. Finish: Dark blue with ivory white striping.

Overland Dealers are Equipped with two Impregnable Values. They possess a car each side of the great Automobile Dividing Line,--\$1000.

All Kinds of Auto and Engine Repair Work. Fully Equipped Shop. Autos for Hire.
Prest-O-Lite Exchange. All Auto Accessories for Sale.

Gresham Garage

Phone 801

C. M. ZIMMERMAN, Prop.

Gresham, Ore.



Happy Santa Claus!

A YULETIDE THOUGHT.

Wouldst thou learn thy Lord's meaning in this thing? Learn it well. Love was his meaning. Who showed it thee? Love. What showed he thee? Love. Wherefore showed it he? For love. Hold thee therein and thou shalt learn and know more in the same. But thou shalt never know nor learn therein other thing without end.—Juliana of Norwich.

Real Meaning of the Day.

What with the happy bustle and planning and working and shopping which Christmas brings, there is real

danger that the deepest significance of the day may be overlooked. Superficially, Christmas is the season of evergreens, of gayly decked trees, of Santa Claus, of feasting and of the giving and receiving of presents. But if that is all that it is it is not enough. The heart of Christmas—the meaning that vitalizes all the observances and perpetuates the festival throughout the centuries—is a rude manger in an oriental khan, wherein lay the Babe who was the son of Mary and Son of God. In its cry name and in its very character Christmas is the birthday anniversary of the Christ Child. They miss the message of this gladdest day of the year who have not eyes to discern in it the cooling, helpless, beautiful Babe who in his complete humaneness warms our hearts and who in his divinity sets our spirits to soaring.

The Christmas Picture.

And they came *** and found Mary and Joseph and the Babe (Luke 2, 16). So simple was the real Christmas story as recorded by the angel of history, I should like to have heard the innkeeper, whose discourtesy and heartlessness have been assumed rather than proved, tell just what did happen on that first Christmas eve. It is possible to frame a likeness so gorgeously as to divert attention from the face itself. An accompaniment may be so brilliant as to drown the sweetness of a great solo. Not the "song in the air," nor yet the "star in the sky," but rather
A mother's deep prayer
And a baby's low cry
make the real Christmas story. God did a diviner thing for men when he sent redemption by the travail and arms of Mary than if he had reversed the motion of the planets.
By the way of Christmas lesson,

then, let us remind ourselves of the simple, human ways in which God comes to earth. To Bethlehem he came as a baby, to Nazareth as a lad, to Jerusalem as teacher and friend. As he came to those cities of old, so he is always coming. I do not forget, of course, that he comes also in sunsets and fields, in storms and earthquakes. Earth's crammed with heaven
And every common bush aflame with God
But the supreme advent is always by a man. The real gospel is not a gospel of beauty, but the gospel of a person. Perhaps if we had spent more time by the Christmas manger we might have sooner ceased expecting salvation to drop from the skies. God comes most and best by men and women.
Appeal has recently been made on behalf of the overworked employees of store and office, suggesting that Christ-

mas purchases be made earlier than usual. In other words, it is suggested that while we are planning for a joyous Christmas of our own we give others a chance to have one. That is precisely the point. The Christmas message must be translated by us in terms of consideration for others. Christmas joy must be borne to the homes of humbler folk, not by angels, but by human hands and feet.

A Christmas Vision.
At Christmas, when the pealing bells
Ring back our hearts to Bethlehem,
Whence the fair flower of Jesse's stem
Eternally our love compels;
Borne on the peal my fancy goes,
Far from the Thames and noisy Strand,
To Christmas in that distant land
Where a more ancient river flows.

And there the desert's chanceless calm
Is troubled Gods and goddesses,
All Egypt's monstrous deities,
Gather in fear by well and palm.
The cry is heard: "O Egypt, hark!
We gods must die. Another comes."
Against the unrelenting drums
Shatter the horror of the dark.

Afar, where some oasis, spiced
With palm and lotus, charms the Nile,
The sphinx, with her mysterious smile,
Sees Mary, kiss the sleeping Christ.
—R. Ellis Roberts

An Ancient Christmas Hymn.
Oh, come, all ye faithful,
Joyful and triumphant!
To Bethlehem hasten now with one accord
Come and behold him
Born the King of angels—
Oh, come, let us adore him, Christ the Lord!

Sing, chorus of angels;
Sing in exultation!
Jesus, forever be thy name adored,
Word of the Father
Now in flesh appearing
Oh, come, let us adore him, Christ the Lord!
—From the Latin

Gresham Time Table

LEAVE GRESHAM (daily)
O. W. P. Depot.

North Bound	South Bound
*12:30 a.m.	†12:25 a.m.
†2:04 a.m.	5:35 a.m.
*5:40 a.m.	7:45 a.m.
7:33 a.m.	11:45 a.m.
†3:40 a.m.	3:45 p.m.
9:34 a.m.	5:45 p.m.
10:40 a.m.	7:45 p.m.
12:40 p.m.	
1:34 p.m.	
2:40 p.m.	
4:40 p.m.	
5:34 p.m.	
6:40 p.m.	
7:06 p.m.	
9:15 p.m.	
9:45 p.m.	
11:15 p.m.	

*Daily except Sunday.
†Sunday only.

‡Golf Junction only.

MT. HOOD DEPOT.

North Bound	South Bound
6:25 a.m.	5:43 a.m.
8:15 a.m.	9:50 a.m.
11:30 a.m.	1:50 p.m.
3:30 p.m.	4:50 p.m.
7:40 p.m.	7:00 p.m.
9:45 p.m.	

‡To Pleasant Home weeks days only.
MONTAVILLA-TROUTDALE LINE
Lv. Montavilla
*6:15 a.m.
7:15 a.m.
8:45 a.m.
10:35 a.m.
12:35 p.m.
2:35 p.m.
4:30 p.m.
5:50 p.m.
6:55 p.m.
Lv. Troutdale
*5:45 a.m.
6:40 a.m.
8:00 a.m.
9:15 a.m.
10:05 a.m.
11:15 a.m.
12:05 p.m.
1:15 p.m.
2:05 p.m.
3:15 p.m.
4:00 p.m.
5:10 p.m.
6:15 p.m.
7:20 p.m.

*Daily except Sunday, 7:30 p.m.
†To Linneman, connect with O. W. P. trains for Portland.
Surely the Want Ads. bring quick and sure returns.

COMBINATION SUBSCRIPTIONS

GRESHAM OUTLOOK with

	1 yr.	6 mos.
Daily Oregonian.....	\$6.00	\$3.25
Daily and Sunday Oregonian.....	8.00	4.25
Daily Journal.....	5.50	2.75
Daily and Sunday Journal.....	7.50	4.00
Evening Telegram.....	4.50	2.75
Weekly Oregonian.....	2.00	1.15
Semi-Weekly Journal.....	2.00	1.15

SUBSCRIBE NOW. GET THE WAR
NEWS. GET THE VOTES FOR
YOUR CANDIDATE.