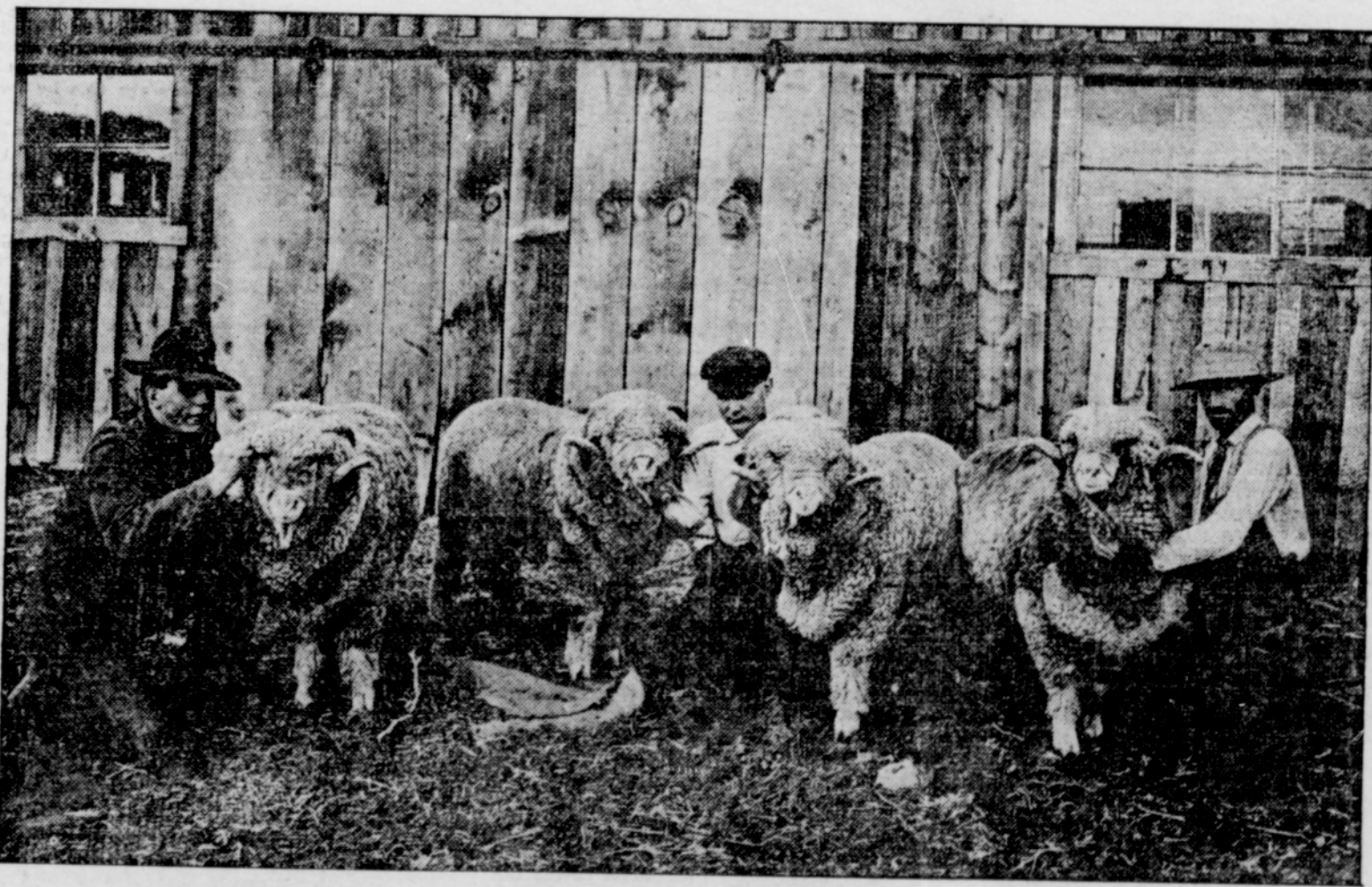


GRESHAM OUTLOOK

GRESHAM, OREGON

Home and Farm Magazine Section

FRIDAY, AUGUST 21, 1914.



Typical Sheep Raised in the Northwest.

Many farmers look upon sheep raising as a small farm industry. There is no more profitable animal if properly handled. Owing to the diminishing size of large ranges immense herds are growing scarce, and more attention is given to sheep raising by farmers with a moderate acreage. Many a farm would be a more profitable enterprise as a whole if a small flock of sheep was added to the livestock equipment. Sheep reproduce more rapidly than cattle and come to maturity at an early age, rivaling swine in this respect. Being ruminants they handle the same class of feeds as cattle and are far more useful than cattle as gleaners of waste. The meat is very healthful and, as the carcass is small, furnishes possibilities in fresh meat which would be most acceptable on most farms, especially during the summer season.