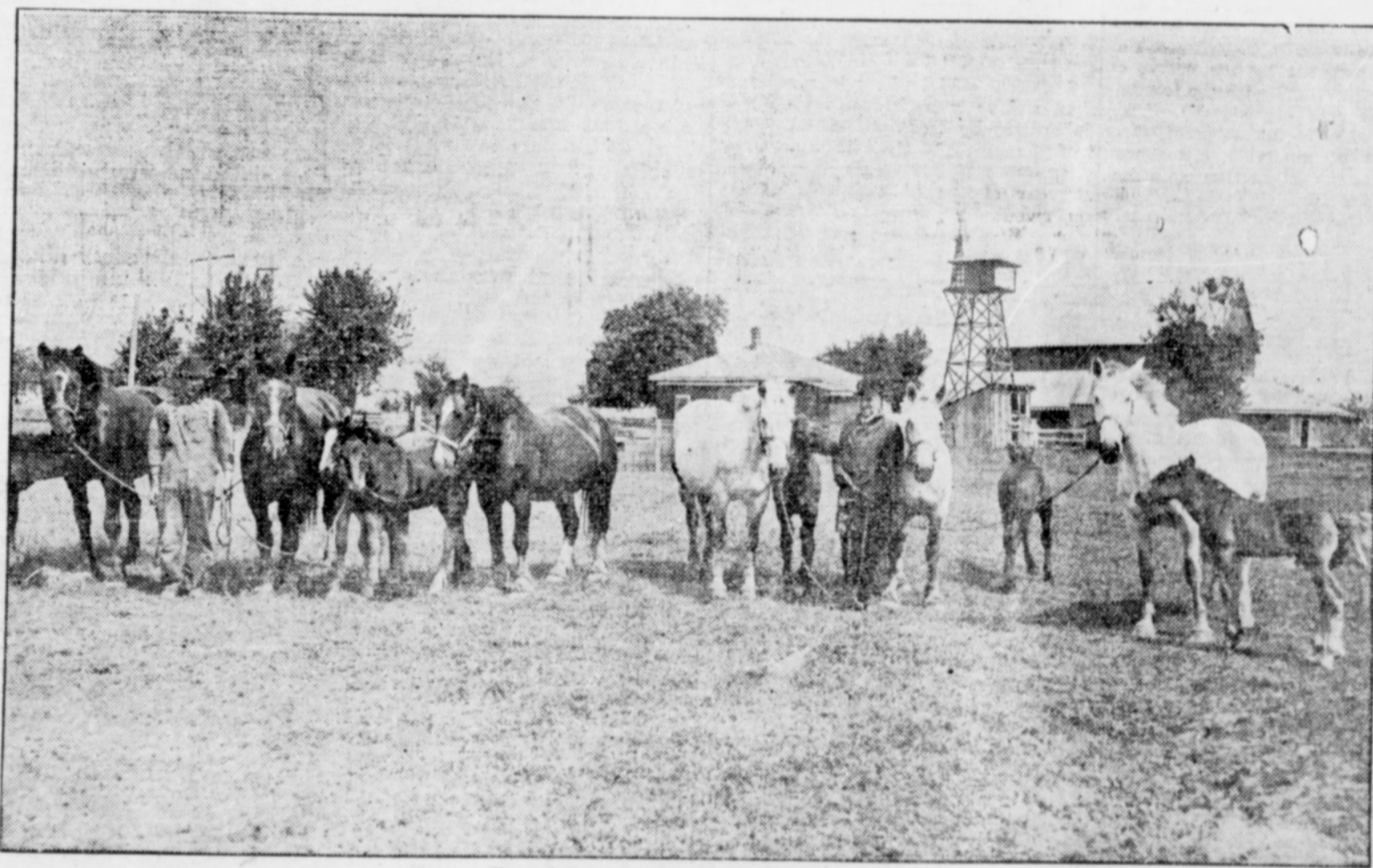


GRESHAM OUTLOOK

GRESHAM, OREGON

Home and Farm Magazine Section

FRIDAY, AUGUST 7, 1914.



Hats Off to the Faithful Farm Horse!

When man emerged from the dark ages, he had accomplished wonders. Fire was his obedient servant, stone had furnished him a weapon, iron had come to his aid from the ground. But he had two companions who were of great service to him—the horse and the dog. The latter guarded him from surprise and attack at night. The horse carried him swiftly over the country. Later when he had learned some of the advantages of husbandry, his willing partner, the horse, helped him with his work. When one stops to think of the debt that man owes to his faithful friend, he wonders that there should ever be discovered a case of cruelty to him, of his being beaten, let to go unwatered and unfed.