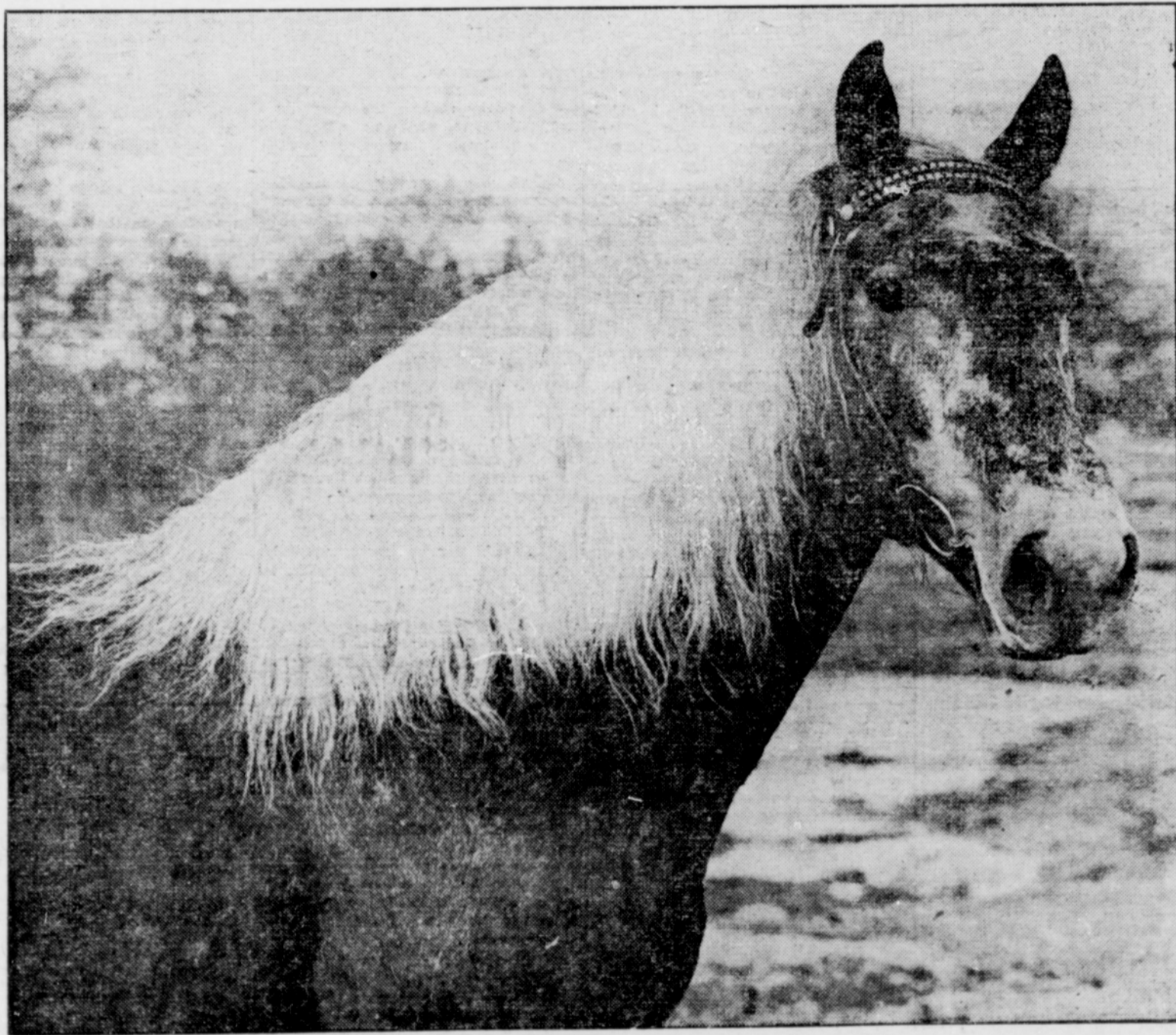


GRESHAM OUTLOOK

GRESHAM, OREGON

Home and Farm Magazine Section

FRIDAY, JULY 17, 1914.



The Farmer's Faithful Friend.—Photo Copyright by Gifford.

No, the horseless age has not yet arrived, and it never will. The horse is the farmer's friend. He works early and late and never murmurs. Automobiles come and go, and may supplant the horse where speed is required, but on the farm the horse is still king. Raising high bred horses pays and always will pay in the Northwest. Breeders are importing foreign stock every year and the market is improving. The wise farmer will not neglect to improve the opportunities of keeping good stock. This policy will pay bountiful returns, not only financially, but in satisfaction.