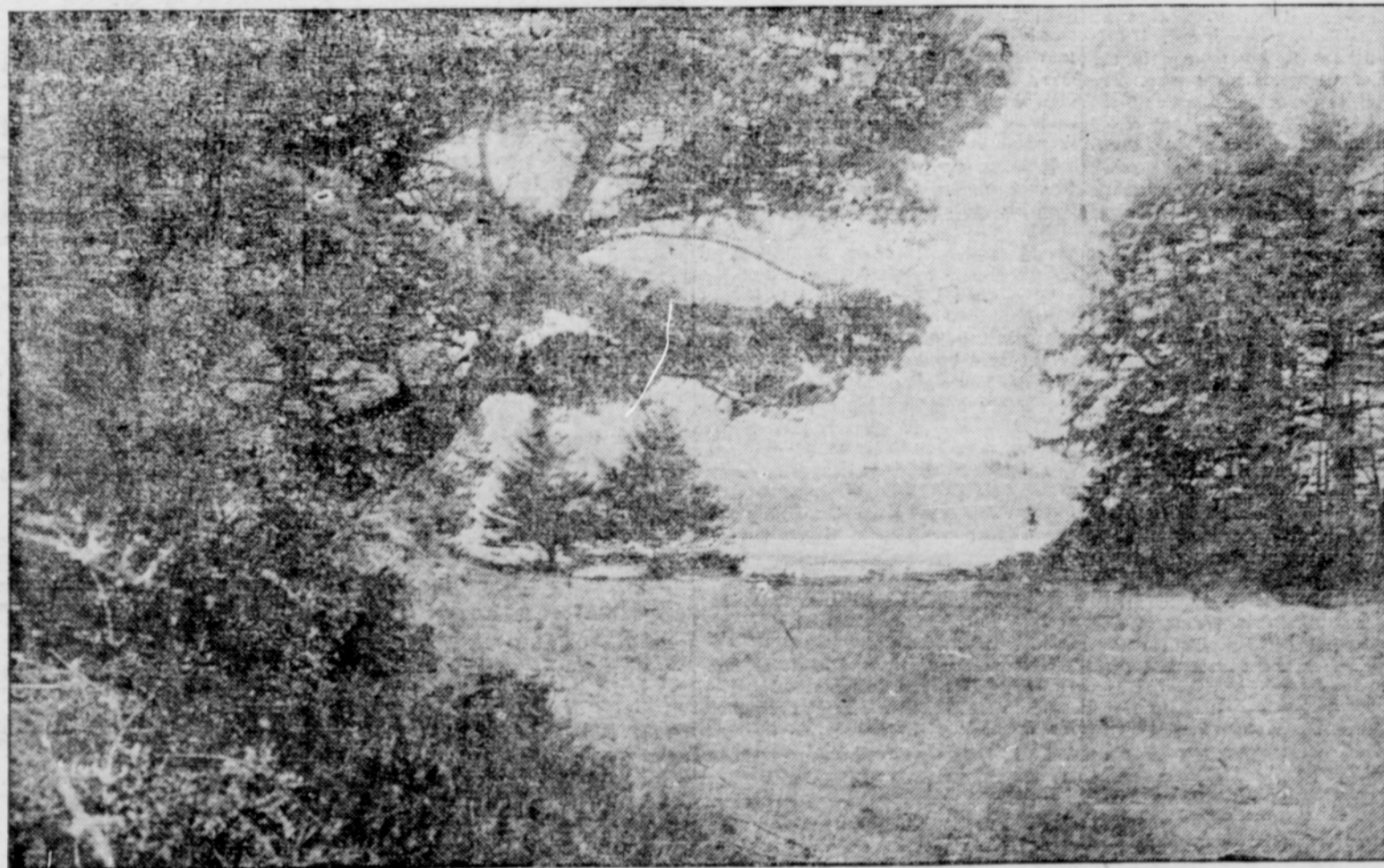


GRESHAM OUTLOOK

GRESHAM, OREGON

Home and Farm Magazine Section

FRIDAY, JULY 10, 1914.



Bayocean on Tillamook Bay.

The tourist who has traveled over the world in search of beautiful scenery and pleasure will, after his return home, usually recall a few favored spots which stand out clearly in his memory as scenic wonderlands. Many of them will be found on our own Pacific Slope, and in no part of the West can be found more world-famous scenery than in Oregon and Washington, the coast and inland waters of which are wondrously beautiful. Where peninsula and mainland converge Bayocean presents one of its finest combinations of sheltered groves and far-reaching beaches. The bay is nowhere far distant from the ocean beach.