

A View from the Green

Senior golfers play at Umatilla

Willow Creek senior golf club members competed in the Columbia-Blue Senior Association tournament at the Big River Golf Course in Umatilla on Aug. 13.

Results for the Willow Creek members are:
-Columbia division (handicap 18 and below) fifth place in gross went to Barry Munkers with a score of 81 and Tom Shear placed fifth in net with a score of 67.
-Blue division (handicap 18-23) seventh went to

Steve Marlatt with 73.
-Senior division (handicap 24 and above) second place went to Dave Creswick with his score of 94.
The next Columbia-Blue senior tournament will be held at the China Creek Golf Course in Arlington on Sept. 10, with 7:30 a.m. and 1 p.m. tee times. Lunch will be provided by the China Creek ladies group for a nominal charge. Players wishing to reserve a cart should call the China Creek pro shop at 541-454-2000.

Over the Tee Cup

The Willow Creek Country Club ladies play-day hosted 17 ladies on Aug. 14.

Low gross of the field went to Nancy Propher and low net to Judy Harris and Sharon Harrison. Least putts of the field was split by Pat Dougherty and Pat Edmondson.

Low gross for flight A was Virginia Grant and low net was Loa Heideman.

Flight B low gross went to Della Heideman, low net to Karen Haguewood and least putts to Betty Burns.

Kris Lindner took low gross on flight C and low net was Bunnie Lindsay. Nancy Arnson had the least putts.

Judy Harris had a chip-in on holes seven and nine. Della Heideman had a birdie on hole four. Longest putt on number eight went to Nancy Propher, KP on hole four to Della Heideman and KP second shot to Lorrene Montgomery.

The Edie Skow net championship and club championship will be held Sept. 4 and 5.

Men's club results announced

Twenty golfers participated in Sunday men's play at Willow Creek Country Club on Aug. 19.

In the two-man best ball, it was a three-way tie for gross with the teams of Barry Munkers/Ron Bowman, Josh Coiner/Slater Mitchell and Brian Fallow/Jake Mahan, all with a score of 59.

Net was also a three-way tie with Dale Boyd/Dave Mitchell, Dave Creswick/Mike Bergstrom and Roger Ehrmantraut/Steve Marlatt with 48.

Individual gross was Slater Mitchell with a 62 in first place, Ron Bowman with a 64 in second and Bri-

an Fallow with a 64.
Individual net was a tie between Delbert Binschus and Roger Ehrmantraut in first with a 55. Second was a tie with Ralph Walker and Dale Boyd with a score of 56.

Delbert Binschus got KP with 11 feet, 3 inches and Rick Johnston got KP second shot with 7 feet, 1 inch.

The course will be closed Aug. 22-24 to pave the parking lot. The next men's play will be on Sunday, Aug. 26 and will be hosted by Matt Bergstrom, Charlie Ferguson and Jerry Gentry.

Local dairy offers free corn

John Vandenbrink dairy has field of corn for school donations



Off Rhea Creek Road near Lone take Morter Lane until you come to the "Drive Slow" sign, from there go 1.5 miles to the field of sweet corn.

The John Vandenbrink dairy in Ione is offering free sweet corn again this year to anyone who wants to pick some. Owners John and Janna Vandenbrink just ask that you put some money in the donation box at the field to help fund the local school. "All the money will go to the Ione School Foundation," said John, when encouraging people to come out and pick. He estimated the corn will be

getting ripe and ready in about a week or so.

Directions to the corn are before you get to Ione, take Rhea Creek Road. Then turn on Morter Lane until you come to a "Drive Slow" sign, take that road south about 1.5 miles and you will come to the field and a sign that says Sweet Corn. "Come on out and get some. It's really good," says John.

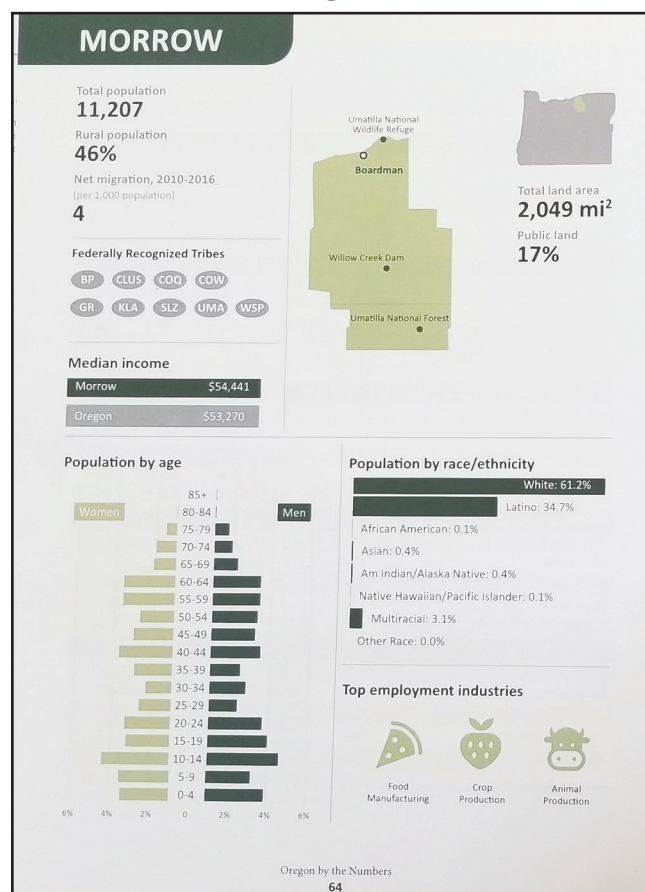
strong enough to ensure execution and was quickly told by the representatives present from the industry that FDA suggestions are taken very seriously. Sara also proposed that the FDA regulate labeling consistency and placement for products advertising as gluten free to ease frustrations many consumers experience when grocery shopping, which was well

received by the FDA representatives for future consideration.

It was a great opportunity for Sara and me to advocate for the estimated 3.5 million people in this country that have Celiac. I'm also certain that if Greg Walden were not the Chair of the Energy and Commerce committee for the House of Representatives it would not have happened.

Report compares life in Oregon's counties

Morrow last in college educated, first in healthy diet Highest in mobile home living, lowest in housing costs



A recent report issued by OSU and Ford Foundation shows interesting statistics about the counties in Oregon, and how they compare to one another on various aspects.

By David Sykes

A recent report issued by Oregon State University and the Ford Foundation, shows data on various aspects of populations and living conditions in all 36 Oregon counties. Morrow ranks high in some areas and low in others.

For instance, the number of people age 25 or older with a four-year degree or greater in Morrow County is 10 percent, last out of the 36 counties. However, in the high school graduation rate Morrow is ranked number five with 84.5 percent graduating. Low college graduation has not slowed down our earning potential, however, with this study ranking us at number seven in the state with an average of \$54,441 in annual household income. However, a later study moved Morrow County up to the number three ranking in average household income in the state of Oregon. Wheeler is the lowest county in income at \$33,400.

On the housing front the report shows Morrow residents have low housing costs, with just 23 percent of its citizens paying greater than 30 percent of their incomes toward housing. We also have the highest percentage of our population living in mobile homes, at 29.3 percent.

We also rank high in property taxes collected with per-capita at \$2,708 in tax per person, number three in the state. The figure is arrived at by dividing the total taxes collected, by the number of people residing in the county, so does not break out residential and business taxes paid.

We are also ranked top in the state in healthy eating, with the highest percentage (by a long ways,

48.8 percent) reporting eating the recommended amounts of fruits and vegetables per day. The next highest is Grant county at 30.9 percent. By the way, who is not eating their veggies? Curry county not doing well at 5.9 percent not eating healthy food.

In other general overall statistics, Morrow has 61.2 percent of its population classified as white and 34.7 percent Latino. We have an unemployment rate of five percent and a labor participation rate of 61 percent.

The Oregon By The Numbers report was released for the first time this year, but is expected to be an annual study. It is of interest to those wanting to know where we rank as a county compared to others in the state. The study covers many categories besides those listed above including: child poverty and child abuse, crime, voter participation, smoking, vaccination rates, birth weights, broadband access, vehicle miles traveled and more.

"Oregon by the Numbers is a collaborative effort between The Ford Family Foundation and Oregon State University. Together, we designed this printed report for local decision makers," says Anne Kubisch, President of the Ford Family Foundation in Roseburg. "We anticipate that Oregon by the Numbers will be produced annually to support communities across the state as we all work to build our collective future.

Additional copies of this edition are available through the Foundation's Select Books program (www.tfforgiselect-books). A PDF version is also available," she wrote.

GROWING GENERATIONS TOGETHER

Since 1945, Bank of Eastern Oregon has had roots in eastern Oregon. We believe in the value of a handshake and provide unparalleled and unbiased service because we know you – we are you, your neighbors, and your community members. BEO keeps working hard for you to ensure that our banking services are never difficult.

Visit your local branch & let us help you realize your financial dreams.

Bank of Eastern Oregon

Term Loans • Lines of Credit • Ag & Commercial Real Estate Loans

beobank.com

VALBY LUTHERAN CHURCH
VALBY ROAD
IONE OREGON. 97843

CHURCH SERVICES 1ST & 3RD SUNDAYS

AVAILABLE FOR:
WEDDINGS ♦ FUNERALS
FAMILY EVENTS

OLD COUNTRY CHURCH ALL ARE WELCOME