

# FARM & FOREST PLANNING

*-Continued from PAGE ONE*  
addressing tourism.

State law requires each city and county to adopt a comprehensive plan and the zoning ordinances needed to put the plan into effect. The planning commission decided on four broad economic sectors driving Morrow County’s economy: agriculture, large port industry, energy and tourism. With the development of agritourism-type businesses, especially in the south end, like fee hunting, bicycle riding and the off-highway vehicle park, it became obvious the zoning ordinance needed updating, McLane said.

McLane emphasized the new zoning ordinances will still protect the public safety and common good, but will bring “balance” to the planning process.

“We want to open the door, but make sure we are still protecting health and safety,” she said. As an example, she said fee hunting operations in the county may see additional opportunity to hold more and different types of public events, thus expanding their businesses. She said certain agritourist-type activities are allowed under Oregon law, but are not available in Morrow County without the zoning changes.

Most of the changes will be on the farm zoned land in the county (see map) but there are also changes to the forest zoning. Changes would be made to loosen

regulations on outdoor gatherings allowed in the forests, as well as opportunity for youth camps. The Morrow County OHV park is all zoned Forest Use, and has seen some development there, including a food vendor and limited undeveloped small cabins.

“This may be the path to open more commercial opportunity, mainly at the OHV park,” McLane said. The new zoning will affect the other county parks but in a minimal way, she added.

At times when a county tries to change its zoning ordinance, it can face challenges from the Department of Land Conservation and Development (DLCD), which oversees planning issues across the state. However, that possibility has been minimized since McLane has been working with the department, and receiving its guidance on the updates, since 2013.

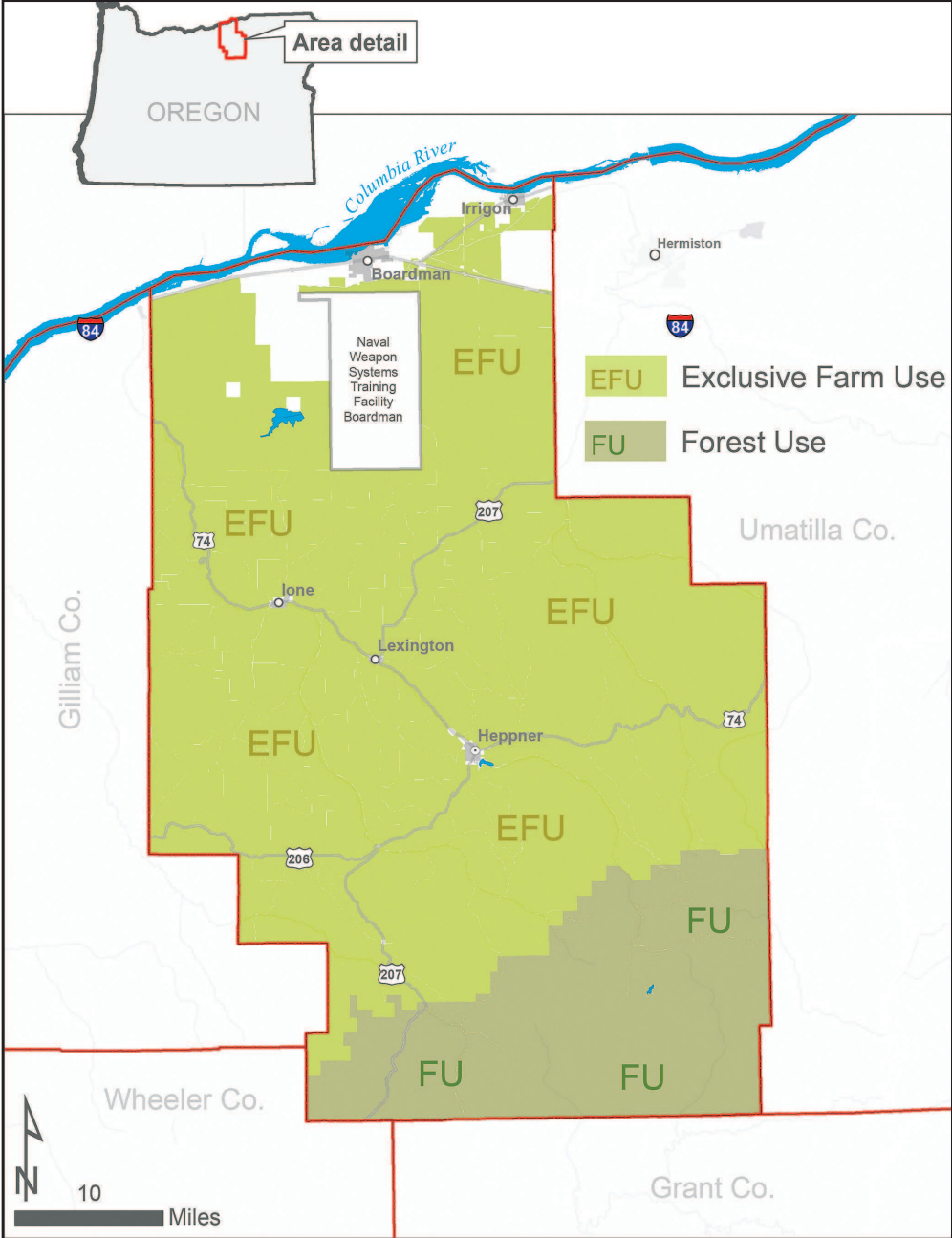
“There will be more opportunity for agritourism and lodging under these changes,” McLane pointed out. “And we have DLCD support through the model code work we have been doing on this. The model code is settled with state agencies, which is encouraging, for we have state support on this,” she emphasized.

McLane did say she does not want there to be confusion when people receive their tax statements. She said the zoning changes

should not affect assessment and tax on agricultural land, but if a landowner is using their property for agribusiness, the assessor may view the assessment differently than if the land were being used for other agricultural uses.

Another area that will be affected by the code change will be the elimination of the small farm 40-acre designation found on parcels, mostly around Boardman. None of these parcels have been created since 1995, and McLane said since then they have been subject to the same rules as the 160-acre EFU zoning. The new zoning rules will just eliminate the name of the parcels, but not affect the landowners or use of the property in any other way.

Anyone wishing more information on the proposed zone changes can go to [www.co.morrow.or.us/planning/page/farm-forest-use-model-code-update](http://www.co.morrow.or.us/planning/page/farm-forest-use-model-code-update) on the county website, or contact planning director Carla McLane or planner Stephanie Loving by phone at 541-922-4624 or by email at [cmclane@co.morrow.or.us](mailto:cmclane@co.morrow.or.us) or [sloving@co.morrow.or.us](mailto:sloving@co.morrow.or.us).



The changes will affect a significant portion of the county that is zoned either Exclusive Farm Use, EFU, or Forest Use, FU. -Contributed

## Students spruce up the town during annual Mustang Mop-Up



Lane Wilhelm (left) and Kane Sweeney wash the windows on the St. Patrick’s Senior Center in downtown Heppner during last Thursday’s Mustang Mop-Up. -Photo by David Sykes

## Morrow County students win annual spelling contest

Pendleton—More than 35 students from three counties participated in the annual spelling contest sponsored by the InterMountain Education Service District (IMESD) earlier this month. Students from Morrow, Umatilla and Union counties participated on May 8 at Blue Mountain Community College in Pendleton. The IMESD sponsors the spelling contests each year.

The students who competed in the county com-

petitions had already won a spelling contest at their schools. There are three divisions: Division 1 (first through fifth grades), Division 2 (sixth through eighth grades) and Division 3 (ninth through 12<sup>th</sup> grades).

Morrow County winners were:

Division 1—1<sup>st</sup> Place: Jackson Coiner, Heppner Elementary; 2<sup>nd</sup> Place: Bradley Rysdam, Irrigon Elementary; 3<sup>rd</sup> Place: Dairys Pena, Windy River Elementary.

## SYKES ART SHOW



One of Sykes’ latest works, “Lovers.”

*-Continued from PAGE ONE*  
from 10 a.m. to 4 p.m. Monday through Friday and noon to 4 p.m. Saturday.

Sykes graduated from Heppner High School and received a bachelor of fine arts from Cornish College

of the Arts, Seattle. He is the co-owner of Sykes Brothers Printing in Pendleton.

Art Center East may be accessed at [artcentereast.org](http://artcentereast.org), 541-624-2800.


Division 2—1<sup>st</sup> Place: Serenity Rodriguez, Ione Community School; 2<sup>nd</sup> Place: Madison Palmer, Heppner Elementary; 3<sup>rd</sup> Place: Conor Brosnan, Heppner Jr/Sr High.

Division 3—1<sup>st</sup> Place: Heinrich Padberg, Ione Community School.

At the county contests, students took a 35-word written test. First through third places were selected


in each of the three divisions. An awards ceremony immediately followed, with winners receiving medals. The first-place winner from each division is invited to participate in the state competition the Saturday of Labor Day weekend at the Oregon State Fair.

For more information contact 541-966-3126 or [lizette.berryessa@imesd.k12.or.us](mailto:lizette.berryessa@imesd.k12.or.us).




**Morrow County Road Dept. would like to remind all motorists that with any road maintenance project to be aware of the workers, they are very important to us.**

Watch for signs, flags and work-zone employees and equipment. Morrow County's goal is to provide a safe roadway. However, it is always up to the motorist to drive according to conditions. Be patient and plan ahead. Leave early if you know you will be driving through work zones. Please use extreme caution and common sense. They will do their best and would appreciate your patience



Temporary closers with grinding and reclamation will be taking place with in the next few weeks. Some areas to be aware of with some delays and partial closers are...  
**Laurel/Wilson Intersection in Boardman.**  
**Ione/Boardman Rd. (Juniper to Ella)**  
**Blackhorse east of Piper Canyon.**



**Again be prepared and be safe.** Questions or concerns may be addressed to 541-989-9500 Morrow County Road Department.

We know *your* business makes *our* business.



Take us along, too.



**Bank of Eastern Oregon**  
BEO Mobile for Apple & Android  
[beobank.com](http://beobank.com)

Member FDIC



**HEPPNER AMBULANCE**

**IS LOOKING FOR**

**VOLUNTEER AMBULANCE DRIVERS**

**MUST HAVE A VALID OREGON DRIVERS LICENSE**

**ALL TRAINING WILL BE DONE AT THE HOSPITAL**

**FOR MORE INFO. CALL**

**RUSTY AT 541-676-2922**

