

# Weather service names 2016 'top weather events' for region



Children ride their bicycles in the snowy parking lot of the Neighborhood Center in Heppner during a December snow storm. The snowy December was one of the top weather events for 2016. -Photo by Megan Futter -See full story at 2016 WEATHER/PAGE FOUR

## Getting to know your exchange students

**Sara Staedelin**  
Age 16, Junior at Heppner  
From: Zurich, Switzerland  
Host Parents: Raymond and Jennifer Cecil

What do you think of Heppner? "I think it is pretty cool, because I am not used to the small space. What I love about it is the community, because they all work together and support each other, and that's really cool."

How has the experience been for you? "Great. I've learned a lot since I've come here. It has been a lot of fun. I've been here three or four months, and I grew a lot in that time. I feel more confident. I felt confident all the time in my hometown. When I first came here I didn't feel confident at all. Because it's

-See EXCHANGE STUDENTS/PAGE THREE



Sara Staedelin

## PGE has big generating plans for Boardman

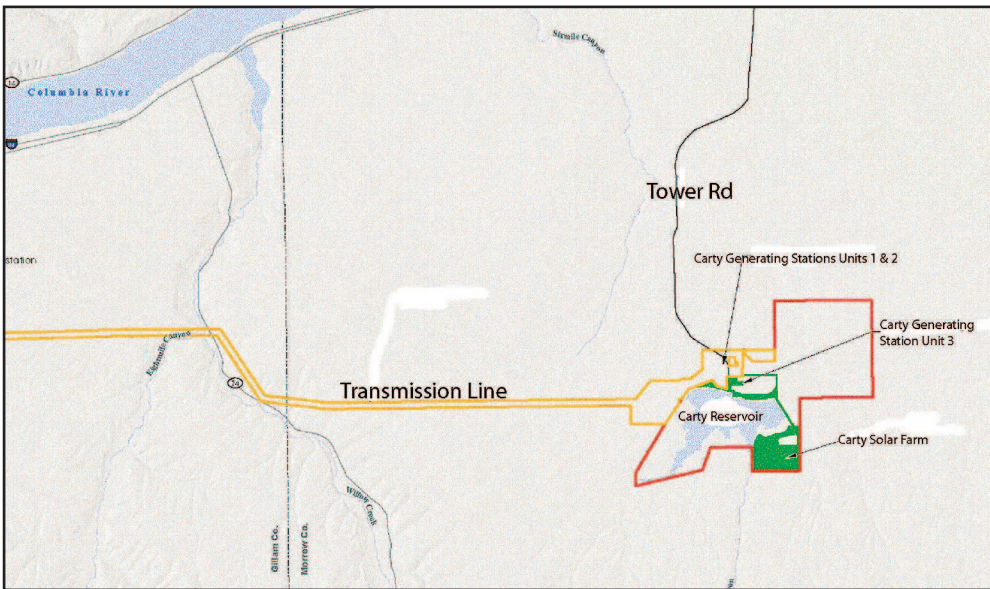
Two more gas plants and a solar facility

By David Sykes

Portland General Electric is in the process of turning the Boardman area into a big electrical generating center.

The company recently completed construction of its 450-megawatt (MW) gas-fired plant in July 2016. Now it has an application before the Oregon Department of Energy to enlarge from 450 to 530 MW an already approved, but not yet constructed, nearby second gas plant. In addition, it has an application waiting for approval to build a third gas plant of 330 MW. To top it off, it also has an application to build a new 50-MW solar generating facility.

All these plants and



Portland General Electric is asking for approval to build another gas electrical generating plant and a solar facility at Carty Reservoir along Tower Road near Boardman.

proposed facilities are located at PGE's Carty Reservoir, 13 miles west of Boardman on Tower Road. The facilities are adjacent to PGE's coal-fired generating facility, which is slated to be shut down in 2020 unless an alternate fuel, other than coal, can be found.

Recently constructed PGE gas plant number one had difficulty when, in the middle of construction,

contractor Abeinsa was in default when its parent company, Spain-based Abengoa, declared bankruptcy. PGE took over and completed construction, but the cost ballooned from the original \$514 million to around \$660 million.

Plant number one is now operating, and now PGE is asking that it be allowed to make limited modifications to a second,

already-approved, plant number two, to boost its output from 450 to 530 MW, and build a third gas plant at Carty that would produce 330 MW. For the expanded facility, the total natural gas consumption is anticipated to be approximately 230 million cubic feet of natural gas per day. All the gas would be supplied by the nearby existing Gas Transmission Northwest pipeline. The gas company has said there is sufficient capacity to supply the fuel required to operate the expanded Carty facilities.

Also as part of the same application is a request by -See CARTY PLANT/PAGE THREE

## Getting to know your exchange students

**Goncalo Silva**  
Age 17, Senior at Ione  
From: Lisbon, Portugal  
Host Parents: Deacon and Erin Heideman

What do you think of Ione? "I'm liking it very much. In the beginning, when I received notice I would come to Ione, this town of like 300 people, it was a shock. Lisbon is a large city. Then I began to see the good parts about living in a small community. It was very different from Portugal but it was a good change."

How has the experience been for you? "Amazing. I have a family that is always ready to go, always doing things and having fun. I don't have time to miss home. They take me to places all over Oregon. It's good, because I'm not here

-See EXCHANGE STUDENTS/PAGE THREE



Goncalo Silva

## 'Two Old Hags' serves up pizza in Heppner

Set to open Jan. 9



Dawn Brosnan (left) and Cathy Wilson stand by the pizza oven in Two Old Hags Pizza, formerly Howe's About Pizza, located on Court Street in Heppner. -Photo by Andrea Di Salvo

Local women Cathy Wilson and Dawn Brosnan are stepping in to keep the Heppner pizza parlor going after retirement of owner Bev Howe last month. The women are opening the Court Street business under a new name next Monday, Jan. 9.

Two Old Hags Pizza will be open Monday through Saturday, 10 a.m. to 8 p.m., with a daily lunch special from 10 a.m. to 2 p.m. They can be reached at 676-1010.

The women say the menu will remain roughly the same, with a few personalizing touches. The pizzas they offer will be similar to what the Howes had, but with new names—if you like Canadian bacon and pineapple, plan on getting

a "Hags in Hawaii" rather than a Tropical Treat.

They will also serve up hamburgers and sub sandwiches, along with sides like a green salad and a variety of wing flavors. One main difference is that they will discontinue deep-fried foods; hamburgers, for instance, will come with chips rather than French fries.

The women say they are taking over the pizzeria because they didn't want to see a Heppner business close, while Brosnan's experience with pizza and restaurants made it a good fit.

"It's big shoes to fill, but we're gonna make our own path, too," says Brosnan. "Hopefully, we will be in business another 14, 20 years."

## Teens help fellow students learn personal finance

Local Heppner High students are looking to help create a successful financial future for their peers.

Emily Cecil, Kane Sweeney and Timothy Gould have teamed up with Rita Van Schoiack, a local financial advisor, to bring personal finance education to their peers using digital media. Their goal is to give their peers basic personal finance information that youth their age most need as they take the biggest step of their life: becoming independent.

They are communicating with their generation in the way in which they are most comfortable, using digital media.

Every school day Emily Cecil, Kane Sweeney and Tim Gould go to the office of Rita Van Schoiack, financial advisor and owner



Heppner High School students (L-R) Emily Cecil, Timothy Gould and Kane Sweeney are on a mission to help bring financial literacy to their peers. The group is working with Rita Van Schoiack of Blue Mountain Investment Management to educate other students via digital media. -Contributed photo

of Blue Mountain Investment Management LLC, to work on bringing this

information to their peers. The time they are there counts as a work experi-

ence class at Heppner High. -See FINANCIAL LITERACY FOR TEENS/PAGE THREE

## Timely information saves local woman from phone scam

A Lexington woman says that reading the Gazette-Times pays off.

Billie Owen said she received a call recently from someone claiming to be her grandson, probably with the hopes of getting money from her.

However, Owen said she had read in the G-T that people should be cautious since phone scams are es-

pecially prevalent this time of year.

She said she asked what the caller's name was and he replied, "Uh, I don't

know, I'm your grandson." So she said, "No thank you," and hung up on the caller.

She then called the G-T

and said that, because of a news article, she was tipped off and saved herself from a phone scam.

ALL NEWS AND ADVERTISEMENT DEADLINE: MONDAYS AT 5:00 P.M.

ALL CHRISTMAS CARDS AND DECOR **30% OFF**

Morrow County Grain Growers Green Feed & Seed  
242 W. Linden Way, Heppner • 676-9422 • 989-8221 (MCGG main office)