



# Blue Mountain Community College

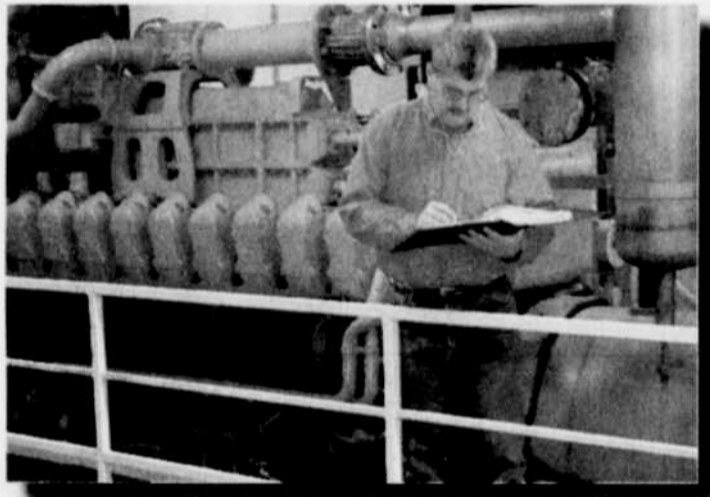
Train our students for the careers of tomorrow

## Local Training for Local Jobs



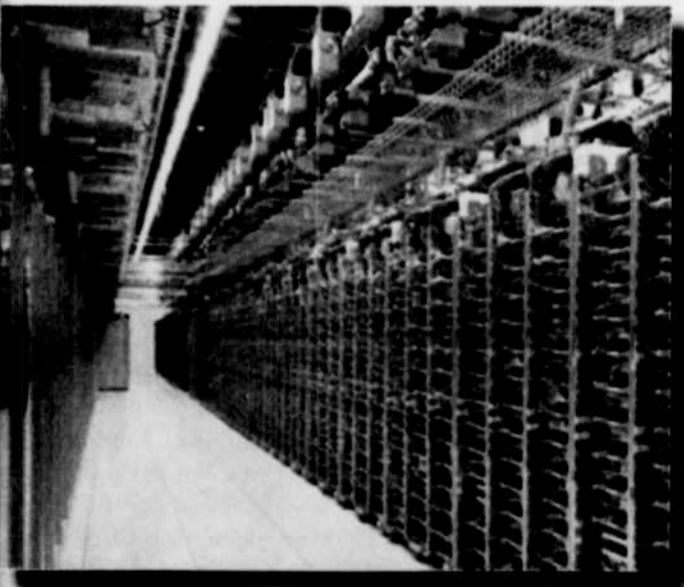
*This bond levy provides our young people with careers in*

### Precision Agriculture Irrigation



*Give BMCC the resources to train our students with skills they will need for the*

### Food Processing Industry



*Bond levy will provide*

### Server Farm Training

## Join us and

# VOTE

# YES



on the

## BMCC Bond Levy

Ballot Measure 30-36

**\* Bond is a renewal of an existing measure, NOT a new tax**

\* Only 31¢ per \$1,000 valuation to provide our young people with skills for existing jobs

\* At current valuations, levy will raise approximately \$28.1 million

\* Levy for capital improvements - buildings and major equipment

Bond will fund

## New Animal Science Center

with training in:

- \* Animal Husbandry
- \* Nutrition
- \* Health Care
- \* Reproductive Management
- \* Environmental Controls



### FRIENDS OF BLUE MOUNTAIN COMMUNITY COLLEGE URGE YOU TO

## VOTE YES FOR OUR STUDENTS

## VOTE YES FOR BMCC



*Paid for by Friends of Blue Mountain Community College*