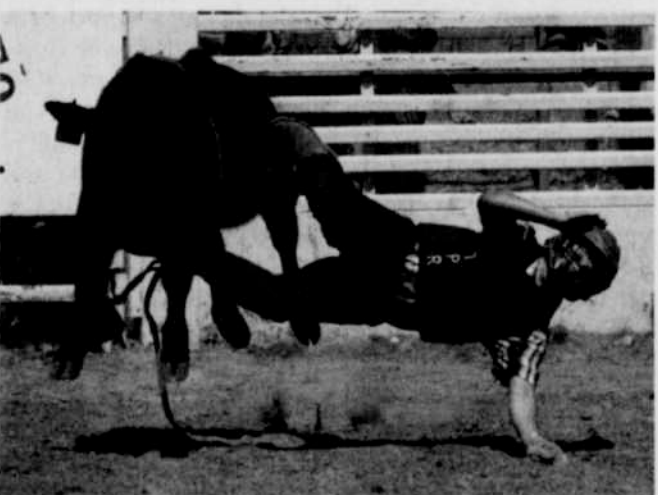


Scenes from Morrow County Fair and Oregon Trail Pro Rodeo



Photos by: Sandy Matthews, April Sykes and Megan Futter

Over the Tee Cup

Following are the results for the August 16 play day at Willow Creek Country Club.
 Low gross of the field: Nancy Propher.
 Low net of the field: Pat Edmundson.
 Least putts of the field: Corol Mitchell.
 Low gross: Flight B-Jan Paustian, Flight C-Jackie Allstott.
 Low net: Flight B-Pat Dougherty.
 Least putts: a tie between Ann Elgin and Bernice Lott.
 Long drive: Flight A-Corol Mitchell, Flight B-Pat Dougherty, Flight C-Jackie Allstott.
 K.P.: Flight B-Lynnea Sargent.
 The Willow Creek County Club Ladies Club Championship and Eddi Skow 36-Hole Tournament will be held September 6 and 7.

THREE MILE CANYON FARMS

-Continued from Page ONE

states that produce frozen potato products, fresh pack potatoes, and potato flakes. These products are sold into both the retail and food service markets. R.D. Offutt Company is a Fargo-based company established in 1964.

Pacific Power has completed a System Impact Study and Facilities Study for the project and provided an estimate for the cost of connecting to the power grid, which is included in the overall project cost. Pacific Power has indicated

that they expect to meet the project's commercial operation date of April 30, 2012. The cost of connecting is approximately \$1.1 million.

The proposed biogas plant produces energy (electricity and heat), animal bedding and carbon offsets. Engine jacket heat and heat from the engine exhaust will be utilized to heat the digesters.

The fiber resulting from the digestion process will be utilized as bedding at the dairy. No additional value was attributed to this

bedding in the financial model because, under existing conditions, the fiber is already utilized for bedding after it is composted. However the dairy does expect an improvement in the quality and consistency in the bedding material as a result of the installation of the biogas plant.

An important emerging revenue stream for biogas plants at dairies is the sale of carbon offsets. Converting manure management systems from open lagoon systems to anaerobic digestion allows

the capture and destruction of methane otherwise emitted into the atmosphere. According to the company, this benefit, separate from the carbon reduction from replacing fossil-fueled electric generation with renewable electric generation, can be sold into voluntary and compliance carbon offset markets.

Presently these carbon markets are very volatile and unpredictable. The state of California is planning on launching a compliance carbon market expected to begin in 2012.

Morrow County Public Works
 363 W. Hwy 74, P.O. Box 428, Lexington, OR 97339
 541-969-9500

There are better locations to dispose of paint than a landfill.

Recycling your old paint cans, is simple and something that everyone can do. More importantly, protecting our environment is something we should all want to do. That's why the PaintCare program was created to make it easy for everyone to recycle and properly dispose of every can of unused paint.

Dispose of FREE of charge at these locations
 North and South Transfer stations,
 69900 Frontage Ln, Boardman, OR
 57185 Hwy 74, Lexington, OR
 Every Saturday and Sunday 9:00 a.m. to 4:00 p.m.

Plastic and Aluminum Signs
Lots of Sizes!
Lots of Colors!
Free Price Quotes!

Heppner Gazette Times
541-676-9228
david@rapidserve.net

If you or someone you know has a gambling problem, help is available and that help is FREE of charge.

If YOU have a family member who suffers from gambling addiction, YOU can also receive FREE treatment even if the gambler is not receiving treatment. If you are a resident of Morrow County and you wish to take advantage of the services above or desire more information, Please call any of the following numbers to set up a LOCAL appointment or just to talk:
 Bobby Harris @ 541-676-9925 or 541-256-0175
 Community Counseling Solutions (CCS) @ 541-676-9161
 OR 1-877-695-4648 (1-888-MYLIMIT)