

The last day to register for the November 2nd election is October 12th
Registration must be post marked or in the post office by 5:00 pm that day
Registration is also available on line
541-676-5601
morrowcountyoregon.com/clerk

Don't Forget To Enter The MORROW COUNTY JACKPOT RODEO

How To Enter:
 Email: mocorodeo@hotmail.com or
 Call 541-676-9451

**Monday-Thursday, Aug. 3-6,
 From 9 a.m. to 6 p.m. OR :**

Fees are due Friday, August 6 by 1 p.m.
 Fees may be delivered to the Rodeo Office or
 mailed to MC Rodeo, P.O. Box 113, Heppner, OR 97836
 (Contestants must be one year Morrow County residents
 or Morrow County school graduates ONLY)

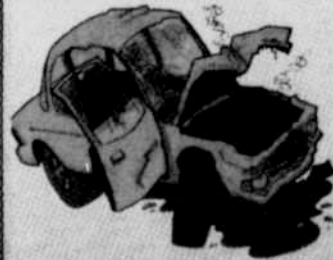
Pedal Power Tractor Pull August 4

RDO Equipment will be bringing their Pedal Power Tractor to the fair for pull offs again this year. The age groups are: four years and under, five-six years, seven-eight years and nine-10 years. Sign ups are the day of the show, Wednesday, August 4, at 5 p.m.



2009 Pedal Power participant

**ZIMMERMANS
 AUTOBODY & GLASS**



**118 Main St.
 Athena
 541-566-0120
 Dave and Cathy
 Zimmerman**

DON'T MISS THE O.T.P.R. THIS YEAR!



**Friday August 6th
 Saturday August 7th**

STARTING AT 7 P.M.

Mutton Bustin' will begin at 6:30 p.m.

Live Bands! Friday-Rodeo Rose
 Saturday- Joe Shinkle and 99 West
 Both bands will be performing at nighRose following the
 rodeo at the beer garden

Slack will begin at 7 p.m on Thursday night

Morrow County Rodeo Sunday, August 8th @ 1:00pm



VIP tickets are \$12 per day in advance and \$15 at the gate. A box for all three performances is \$360.

To purchase advance tickets call Camille Peck at 989-8351.



It's easy to become an exhibitor

Have you attended previous county fairs and in looking at the exhibits thought to yourself "I can do that"?

Whether it is baking, canning, growing fruits, vegetables or flowers, sewing, crafts, taking pictures or painting there is a category for you at the fair. It is simple to become an active participant. All one needs to do is to go to the Fair Office, pick up an exhibitor number and a premium sheet and then take the items to the various departments on Monday, August 2, between 1 p.m. and 8 p.m.

Fruits, Vegetables and Flowers are accepted Monday 5-8 p.m. and Tuesday morning from 8-10 a.m.

Ren'ee Yocom, fair manager, will be happy to answer any questions. Office hours are Monday through Friday from 8 a.m. to 12 noon and 1-5 p.m.

Get involved in the Morrow County Fair

We go to the Morrow County Fair to look at the flowers, watch the 4-H members compete, and check out the livestock. But there is no doubt that fair is always more fun if we are part of the event!

There is still time to participate. The fair opens to the public on August 4, but exhibits are accepted on Monday, August 2. Turn through your Morrow County Fair Premium Book right now and look at all the opportunities to be part of the fun.

Be an exhibitor at the 2010 Morrow County Fair. It's easier than you think!