

Meet Rostock, Germany

students and other young people), the Convent of the Holy Cross, the old town walls and St. Mary's Church are but a few of the witnesses to the past bringing Rostock's history to life.

See the sights

Marienkirche (St. Marie's Church)

Building started mid-13th century, but in 1398 the nearly finished building collapsed. After that a cross-shaped Basilica emerged, built in the style of the French cathedral style and the St. Marie's Church in Luebeck. Its tower is Baroque. The art treasures of the Marienkirche are worth seeing including the astronomical clock built in 1472, the bronze baptismal font consecrated in 1290, the Rochus altar from around 1530 and the Baroque organ.



St. Marie's Church

Petrikirche (St. Peter's Church)

With its 355-foot spire topping the city skyline, the Petrikirche marks the area where the town was founded. The church was first mentioned in 1252 and is at least 800 years old. Interestingly, it was built with some breaks. For instance, in 1311 when Rostock was at war with the Danish king, the townspeople took some of the church's stones to build a defense tower on the Baltic in Warnemuende. From the viewing guests can look out over the entire city, along the Warnow River up to Warnemuende and the Baltic.



St. Peter's Church and parts of the reconstructed City Wall Town Hall

The town hall was built between 1270 and 1290 as a two-story duplex with a vaulted cellar dating from 1230. It's the oldest brick Gothic town hall in Germany. The Town Hall has been the city administration headquarters since the 13th century. It was also used as a trading center in the Middle Ages. The New House was added on as a town festival hall in 1484. The arcade and decorative façade were extended accordingly and expanded to seven towers. In the beginning of the 18th century, the Baroque front structure and the banquet hall were added.



Town Hall

University

The university of Rostock, founded in 1419, is the oldest in Northern Europe. Founding faculties were the "Facultas artium" (today the Faculty of Philosophy), the Faculty of Law and the Faculty of Medicine. In 1432 the Faculty of Theology completed the traditional faculties. In the present there are also faculties for agricultural and

environmental sciences, engineering, mathematics and natural sciences just as economic and social sciences. In these faculties study more than 12000 young people from around the world.



University - Main Building Warnemuende

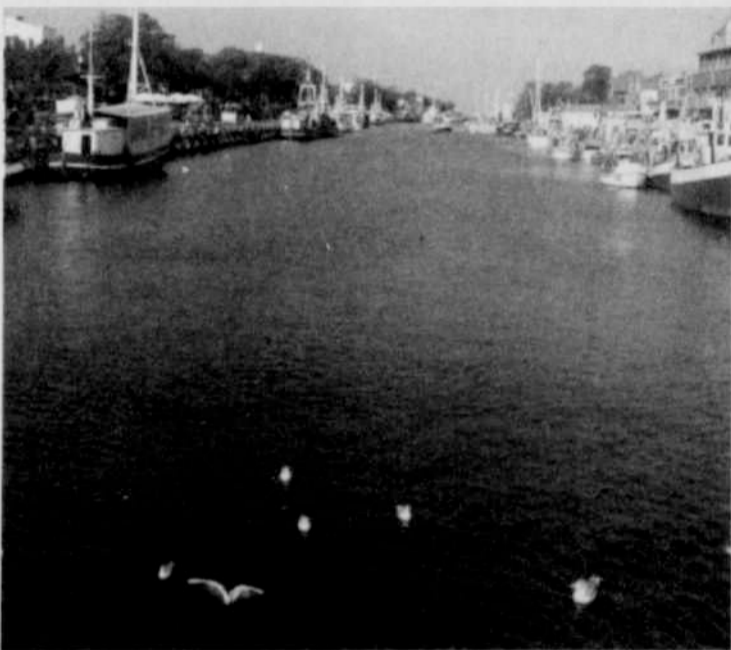
Warnemuende, which has been part of Rostock since 1323, is located directly of the delta of the river Warnow into the Baltic Sea. With Alter und Neuer Strom two river ways are the arranging veins of the seaside resort. Where the old and new channels meet, the Warnemuende Lighthouse has spread its protective beacon. Built in 1897, the nearly 100-foot-high, brick Warnemuende Lighthouse offers a superb panoramic view of Warnemuende, the Baltic Sea and the harbor entrance. At its base is a plaque honoring the former coast guard station that served as "the last house until Denmark."



Warnemuende Lighthouse

Past the lighthouse, the Westmole, a 1600-foot breakwater topped with a wide cement walkway, extends into the Baltic and provides the best vantagepoint for watching ships make their way to sea. Huge ferries bound for various Scandinavian ports dwarf yachts and fishing boats. At the pier, ocean liners like the "Crown Princess" or the "Majesty of the Seas" looms over the town, having discharged its passengers most of whom will simply board buses or railway for a day-trip to Berlin.

"Alter Strom" - the old channel used by ships for nearly 500 years but closed off in 1903 when the new channel was widened - recalls days long gone by. On the near side of the Alter Strom, fishing boats lie tied to cleats as their crews sell from tables heaped with fish. Several men stay on board and repair nets. Some fish are placed in large metal smokers, where vendors write the estimated ready time in chalk: "Butterfish 11:30." "Flounder 12." Smoke wafts over the crowds, as seagulls dive for leftovers.



Warnemuende Old Channel

This old fishing village has lost little of its charm. Crossing a footbridge over the Alter Strom, visitors are rewarded with a walk through narrow alleys lined with centuries-old gabled fishermen's houses. An occasional glimpse into a backyard reveals tiny courtyards with proudly tended flowers. It's an almost uniquely romantic place, but time hasn't stood still here. Boutiques, cafes and galleries face the channel lined with boats converted to take-out restaurants selling every variety of fish: herring, salmon, squid, mackerel, pickled fish, smoked fish, fish sandwiches, fish-kabobs, fish cakes. For barely three euros (3.75\$) for a typical serving, it's hard to go wrong. It's fun watching the action on land and water while sipping one's coffee or ice-cold Rostock beer.

The beach and forest area Rostock Heath easterly of Warnemuende loads to go swimming and walking. It's Rostock's biggest greenbelt recreation area.



Warnemuende Beach

For some visitors, the beach - as wide as a football field is long - is the prime attraction. Boardwalks cross the dunes at frequent intervals, each marked with a number and a classification. Some parts of the beach are "FKK" - literally "Freie Koerperkultur" or "free body culture" (a/k/a nude). Others are "Textil." Some mark sections that welcome pets or are wheelchair-accessible. Parts of the beach are also set aside for sports such as windsurfing, parasailing and sea-kayaking.

Famous Events

Lighthouse ablaze

The New Year will be welcomed in at the resort of Warnemuende with a firework display and the "Lighthouse ablaze". A production of light, fire and lasers will cast a spell over the 100 year old technical monument.



Lighthouse ablaze

Hanse Sail Rostock in August

Every year at the beginning of August the Hanse town of Rostock celebrates the festival of Tall Ships, the Hanse Sail Rostock. Impressive windjammers, traditional sailing ships and museum ships will provide a unique maritime flair in the old town port at Rostock and in Warnemuende, with sailing trips available for visitors, too. The biggest and most colorful sailing festival on the Baltic coast attracts more than a million visitors each year.



Hanse Sail Christmas fair



Every year the largest Christmas fair in the North of Germany. The largest Christmas fair in the north conjures up a festive blaze of lights in the historic city centre. The smells of mulled wine and Christmas gingerbread, Rostock smoked sausage and the sound of Christmas music fill the air. A must for fans of the Christmas period from end of November to Christmas. In this year, the biggest Christmas tree is 72-feet high and weighs approximately 6 tons.

OUR SINCERE THANKS TO ALL OUR FRIENDS AND SUPPORTERS IN THE 2006 GENERAL ELECTION

SPECIAL THANKS TO ALL MORROW AND UMATILLA COUNTY VOTERS



Judge-Elect Christopher R. Brauer

ATTENTION MEDICARE PART D PARTICIPANTS

Morrow County Health District is again offering free assistance with Medicare Prescription Plans.

Participants can change prescription plans between November 15 and December 31.

If you have questions about what plan is best for you, or need help changing plans, please contact us to set up an appointment. 676-2914 or 1-800-737-4113 ext. 2914.