

HES announces Presidential Award winners



Twenty Heppner Elementary sixth graders won Presidential Awards. (Front Row L-R): Silver winners- Courtney George, Karlie Crumbliss, Trent Cannon, Cody Nelson, Shane Smith, Zach Yocom, Camron Day, Cody Orr, Drew Brannon, John Nelson and Mayci Garrett; (Back Row L-R): Gold winners- Zach Hintz, Carrie Haguewood, Stephanie Schuler, Justin Bailey, Conner Pappas, Seth Palmer, Justin Pranger, Garrett Gibbs and Natalie Rauch.

Pipers awarded June Yard of the Month



Dave and Pam Piper. Photo by Kay Proctor.

By Kay Proctor

Neat and tidy describes the Yard of the Month for June 2006 in Heppner at Dave and Pam Piper's home at 61223 Highway 207.

Their enjoyment of yard work began at young ages because of family. Dave is a Heppner native who helped his mother, Betty, with her successful gardens. Pam, a native of Lexington, enjoyed the gardens of her grandfather, Truman Messenger. A close family, Dave and Pam work together in the building/contracting company they own and in their online business.

The Piper's property was originally known as the Van Blocken's although over the years some of it was divided and sold. Pam and Dave purchased their 1902-built home from George and Helen Keller in 1991 and began upgrading the house and improving the yard right away. The property extends past Shoebe Creek with some sloping and with shallow, rocky topsoil. Dave has the land neatly organized into living, working, storage and yard areas.

An old out building was given to him by previous

neighbors, so Dave rolled it over to his property on pipes and restored it. It now provides shelter for their four cats. Their two German Shepherds, Hooligan and Marley, keep a close eye on the entire property.

The Pipers removed several overgrown Locust trees sited closely to the house and took out an older chain link fence fronting the lot. They added a large wooden deck with bench seating, a 6-foot rough fir privacy fence and dug out flowerbeds along the fence and deck. The beds are all lined with salvaged red brick, a lot of which Pam rescued from the old Central Market building. An 8-foot round galvanized water trough sits at the decks' end. It served as the family pool on many hot summer days.

Dave resloped, reshaped and graveled their driveway. He built large wood planters, which Pam filled with wild flowers to define the entrance to their front yard. Two flowering plum trees line their front walk leading to flower filled containers by the entryway.

A tall, graceful willow tree in a corner began as a skinny start from a neighbor a few years ago and

is Dave's favorite part of the yard to hang out in. A healthy pine tree that grows out of a sunken wine barrel began as a seedling given to Pam by one of the young school kids who rode the school bus she drove. An especially tall arborvitae planted by previous occupants towers along a fence contributing some nice shade towards the yard.

The lawn has been improved over the years so that it provides the perfect field for the competitive croquet games that the Pipers and their extended family participate in. Pam is the designated family lawn mower and weeder.

Daughter Tiffany will be home from college for the summer soon and will be helping with various projects. One summer, she and Pam worked together and added a private sheltered nook in the corner of the yard. They paved it with flagstones and decorated with a variety of flower containers and rustics. A glider that the two rebuilt provides a place to sit and is Pam's favorite area of the yard.

Old-fashioned perennials fill the beds along with some good-sized rocks that tested the strength of Dave's back as he carried them. Some of the plants found here are irises, gypsophilia, heucheras, daylilies, hostas, purple coneflowers, hollyhocks and a large number of peonies. There are rose shrubs, a large burning bush, a lilac and an amazingly densely full pontentilla. The bleeding hearts are both Dave's and Pam's favorite plant. The columbine and Dames' Rockets are a favorite of the visiting hummingbirds.

Scattered throughout the landscaping are found treasures and a variety of family memorabilia; toy wagons from Grandpa Truman and a baby buggy frame traded to Tiffany for a puppy. Tucked in among the plants are a wood birdhouse, a pet shelter and a wishing well made by son Dave who is married now and living in western Oregon.

Pam recommends using hardy plants; she has exceptionally good luck with snapdragons and Sweet Williams. Dave recommends having a wife who likes to work in the yard.

Plans are to paint the house this summer and someday add a decorative fence to the front yard. In the meantime, the Pipers are enjoying their yard. And their family and neighbors are enjoying the Pipers.

Yard of the Month recognition is co-sponsored by the Heppner Garden Club, MCGG Green Feed, Heppner TV and the City of Heppner.

Students show appreciation for spring flowers



Students from Mary Ann Elguezabal's class presented Dave Zachary with a big card and a gift for his kindness in providing the class all spring with fresh flowers.

Boardman Power Plant out of service for repairs

Portland General Electric Company (NYSE:POR) today announced its coal-fired Boardman Power Plant is out of service for repairs and is estimated to be offline until early July. Portland General Electric (PGE) has a 65 percent ownership share in the plant.

Mechanical problems were encountered in early June when a balance weight in one of the plant's low-pressure turbines came loose. Initial inspections show this weight may have damaged some turbine blades and related components inside the low-pressure turbine unit.

PGE engineers and technical experts are working to assess and fix the damaged areas so that the plant can be returned to service as soon as possible. It is estimated at this point that the repair efforts may take between two to four weeks to complete, resulting in \$1 million to \$4 million of incremental replacement power costs.

"While Boardman is out of service, PGE is covering the gap through wholesale power markets and the company's other supply portfolio resources," said Jim Lobdell, PGE vice president of power

operations and resource strategy. "From a replacement power perspective, it helps that the weather is relatively mild this time of year and that stream flows right now are higher than we've seen in the last six years."

Portland General Electric, headquartered in Portland, Ore., is a fully integrated electric utility that serves more than 780,000 residential, commercial and industrial customers in Oregon. Visit our Web site at www.PortlandGeneral.com.

Statements in this news release that relate to future plans, objectives, expectations, performance, events and the like may constitute "forward-looking statements" within the meaning of the Private Securities Litigation Reform Act of 1995, Section 27A of the Securities Act of 1933, as amended, and Section 21E of the Securities Exchange Act of 1934, as amended. Forward-looking statements may be identified by words including, but not limited to, "anticipates," "believes," "intends," "estimates," "promises," "expects," "should," "conditioned upon" and similar expressions. Investors are cautioned that

any such forward-looking statements are subject to risks and uncertainties, including matters and events related to the extent of the damage and the timing of and effectiveness of the repairs to the Boardman turbine and the price and availability of wholesale energy.

As a result, outcomes may differ materially from those projected in the forward-looking statements. All forward-looking statements included in this news release are based on information available to the Company on the date hereof and such statements speak only as the date hereof. The Company assumes no obligation to update any such forward-looking statement. Prospective investors should also review the risks and uncertainties listed in the Company's most recent Annual Report on Form 10-K and the Company's reports on Forms 10-Q and 8-K filed with the United States Securities and Exchange Commission, including Management's Discussion and Analysis of Financial Condition and Results of Operations and the risks described therein from time to time.

Port of Morrow to meet

The Port of Morrow will hold a regular commission meeting on Wednesday, June 14 at 1:30 p.m. Included in the agenda are the Willow Creek Valley Economic Development Group and the Heppner Power Plant.

The Port of Morrow building is located at 2 Marine Drive, Boardman. The meeting location is accessible to persons with disabilities. A request for an interpreter for the hearing impaired or for other accommodations for persons with disabilities should be made at least 48 hours before the meeting to Carmen Velasco or Elaine Vandecar at (541) 481-7678.

Soccer sign-ups to be held

Soccer sign-ups will be held June 15 and 16 from 5-6:30 p.m. at the Heppner Neighborhood Center. There is a \$40 fee to play. New participants should bring their birth certificates.

For more information, contact Jessica Lehman at 989-8571.

Chamber Chatter

By Claudia Hughes, Exec. Dir.

There will be no Chamber Thursday, June 15. Some of the Chamber members will be meeting at 9 a.m. behind the City Hall to see if "they are tough enough." In other words, they will be experiencing Del Piper's "Trail's Tour" and learning more history about the Willow Creek Valley. Those of you who are unable to attend, should grab that bonus hour (and that doesn't mean going back to work). Those interested, come check to see if there is space on board.

This is a plea for all local entertainers willing to perform for various venues to contact the Heppner Chamber. One of our website pages was created to list local talent from instrumentalists to vocalists, comedians to acrobats.

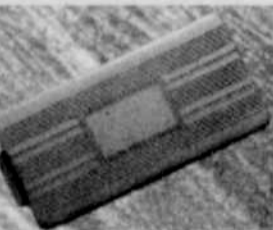
Those who wish to be included on this page, which would create opportunities to perform, should give the office a call, 676-5536. There is always a need for music and entertainment to bring joy and magic for an hour or so, a need for people to have a chance to share their talents with others. It is a gift. The "Celebrate Heppner" Talent show is coming up at the end of July. It gives the community the opportunity to experience some light moments while sharing food and award-winning pies. Professionals not required.

**We Print
Business Cards
Heppner Gazette
676-9228**

TREAT DAD!
**All-You-Can-Eat
BARBECUE BUFFET**
Friday, June 16 from 5-9 p.m.
JOHN'S PLACE
Main Street, Heppner

Gift Suggestions
for
Father's Day

Tie Tacs
Money Clips
Watches



Member
Jewelers of America, Inc.
Peterson's Jewellers
Heppner 676-9200