

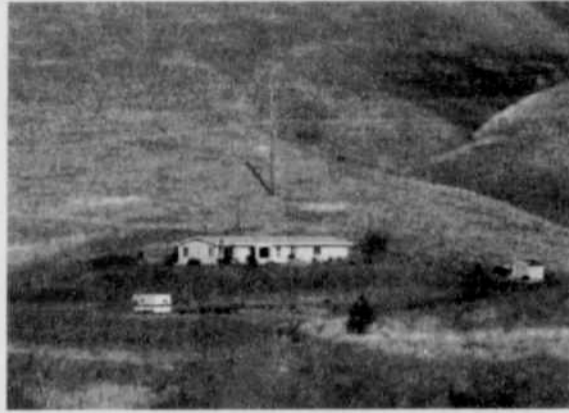
Restaurant & Lounge



Restaurant and Lounge in Heppner. All fixtures and inventory included in sale. Turn-key operation. Walk in and run your own business.

\$219,000

One Acre Secluded Lot With View



1675 SF premium 1991 Fuqua manufactured home
4 bedrooms, 2 baths
Central heat and air conditioning
3 Decks
City water, city sewer
RV Parking
Large yard and garden area

\$99,500.00

5-unit Apartment Building in Heppner



Good Income Potential. 5-unit apartment complex in good condition. New carpet and appliances. Owner will carry contract.

\$69,500

Tri-Plex



2- two bedroom 1 bath units
1- one bedroom 1 bath unit
Good investment property

\$110,000

CALL DAVID SYKES TO VIEW THESE PROPERTIES

(541) 676-9228 days

(541) 676-9939 evenings

(541) 980-6674 cell

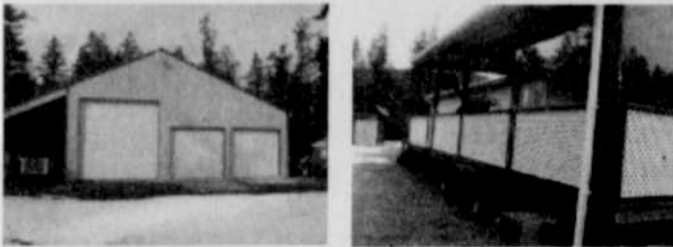
1-800-326-2152 toll free

www.heppner.net david@heppner.net



REAL ESTATE

3 bedroom on 5 acres at Blakes



Newer manufactured home on 5 m/1 secluded mountain acres. 3 bedroom 2 bath 1998 Fleetwod. National Forest Land accessible from home. Sit in the hot tub on the deck and watch the wildlife. Large nice kitchen, lots of storage, living room, sitting room, and dining room with French doors. Park your RV in the large insulated shop. You will find peace and quite in this very nice secluded mountain home.

\$197,500.

Newer double wide



\$79,900

Newer double wide mobile. 3 bedroom, 2 bath, oak kitchen cabinets, dining room, covered patio/porch on quiet dead-end street with lots of parking. Heppner.

3 bedroom with extra lot



SALE PRICE!
\$16,500

Home on double lot. Insulated shop with its own drive. Lots of storage. Near high school.

Price Reduced!
\$80,000

Building lot above lake



Ready to build on. City water and sewer.

Price Reduced!
\$16,500

Call David Sykes at 676-9228 to have your property listed here

Visit www.heppner.net/heritage and sign up my newsletter, and stay informed of new property listings in the area.

Have several buyers interested in mountain property. Contact me if you have mountain property to sell.

David Sykes

2 bedroom, 1 bath



\$45,000

2 bedroom, 1 bath, 960 sq. ft. home in Heppner. Built in 1899, has baseboard heat and a wood stove, remodeled interior with new siding, enclosed porch, fenced yard, all on a 66 x 132' lot. Excellent rental history.

5 bedroom in Heppner



5 Bedroom with new vinyl windows, new wiring, and new plumbing. Needs some TLC finish up work to make it yours. Central propane heating with a woodstove and monitor heater included in sale.

price reduced AGAIN!!

\$65,500

One Acre With Barn, shop and corrals



Year Built: 1952

966 SF Bungalow, with new foundation and roof 2 bedrooms, 1 baths Gas heat City water, Private Septic RV Parking Large yard and garden area Outside city limits

\$92,000

1321 Mountain Acres



Location: Located 26 miles south of Heppner. At the foothills of the Blue Mountains, accessed by a State Highway that is paved to Anson Wright Park and a well-maintained gravel county road through the property.

Acres: Land consists of approximately 1321 acres. That has been divided into 2 parcels and can be split.

Elevation & Terrain: Ranges from 3,200' to 4,600' +/- . Terrain is moderate slope with some steep areas at higher elevations. General terrain is canyon and draws with ridge tops. Predominant use is summer grazing.

Improvements: The perimeter is fenced

Temperature: Winter mean average temperature is 32 degrees and summer temperature is 85 degrees, with some variation for short periods of time.

Range and Water Conditions: Subject ranch has abundant native forages consisting of several types of grasses including but not limited to; blue grass, bunch grass, and wheat grass. The range has been well managed. The entire range has year round water in the form of streams and numerous developed ponds.

Livestock: Current owner/operators use this ranch as a late spring to late fall grazing unit, running approximately 200 head of yearlings for four months.

General Summary: There is a good gravel network throughout the entire ranch. This timbered ranch has recently been harvested. But the selective cutting left many trees. This ranch is also an excellent recreational site. There is an abundance of deer, elk, antelope, and birds, including wild turkey. The remote location offset by the accessibility make this a desirable property.

\$815,000



180 W. Baltimore #5
Heppner, OR 97836

541-676-5049