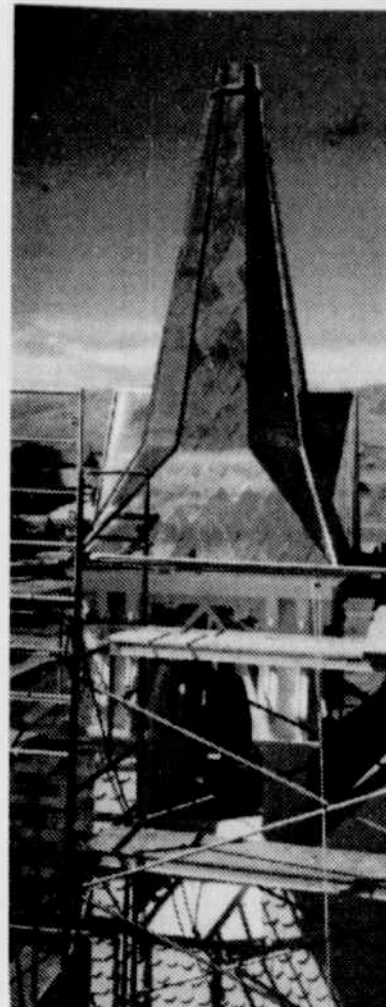


**New steeple shines atop Methodist Church**



New copper steeple at Heppner United Methodist Church

By Monika Hunter

You may have noticed a new shine in Heppner, on Church Street, to be exact. Mark "Oka" Bruno finished crafting and welding the new copper steeple on top of the Heppner United Methodist Church in July.

Three copper crosses will be going up sometime in or after September.

It was a big step of faith for the congregation to put copper tiling up on their 125-year-old steeple, but they knew it will last for a very long time. How long? Sixty to a hundred years, says Bruno, artist and historical building restorer.

"We were lucky to get Mark to do the job because he had done this for several years down in the San Francisco Bay area before moving to Ione," says United Methodist pastor Craig Strobel.

The church celebrates its 125th anniversary on Sunday, Sept. 16. Church worship service will begin at 10:30 a.m. to celebrate the church's heritage and ongoing ministry in Heppner.

The church was first built in 1886 and survived the 1903 flood when it was rotated 90 degrees by the floodwaters. It was pulled back into place by a team of horses, and several years later a basement and three rooms were added to the western wall.

The copper steeple replaces most of the original hemlock shakes that were milled in Ukiah. The diamond design of the copper shingles recalls the fish-scale design of the hemlock shakes. Weather and particulate matter in the air will cause the copper to change color in the coming years, dulling first to the color of a used penny.

"We are deeply grateful to everyone who has made this possible with their donations, and particularly to Mark Bruno for his dedication and creativity," Strobel commented. "He has been a tremendous asset to the communities of the Willow Creek Valley."



Mark Bruno with new steeple at Heppner Methodist Church

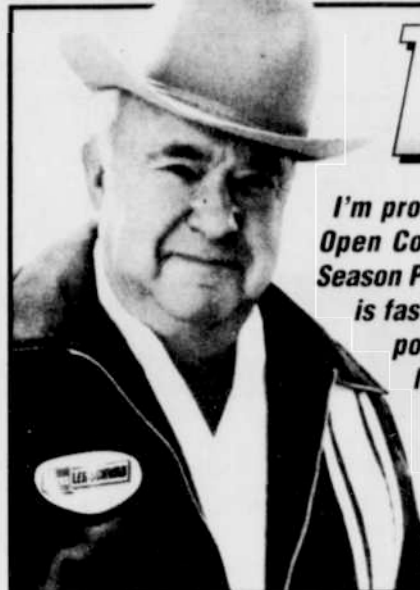
**Correction**

Sibbea Jones was the grand champion horse showman, senior (horse and pony) of the Morrow County Horse Show.

# Tires LES SCHWAB

## Hot August Deals on Tires & Wheels

### LIGHT TRUCK & SUV



I'm proud to introduce to you the Open Country A/T. This quality All Season Pick-Up and Sport Utility Tire is fast becoming one of our most popular. You'll love it's great handling and smooth ride. "If we can't guarantee it, We won't sell it!"

*Les Schwab*

## THE ALL NEW OPEN Country AT

SIZE & LOAD RANGE	SUPERMARKET PRICE	SIZE & LOAD RANGE	SUPERMARKET PRICE
P235/75R-15 B	108.15	P265/75R-15 B	105.72
P225/70R-14 B	98.31	P225/75R-16B/W B	93.11
P225/70R-15 B	103.47	LT225/75R-16B/W D	129.02
P235/70R-15 B	106.20	LT225/75R-16B/W E	132.89
P265/70R-15B/W B	115.12	P245/75R-16 B	103.79
P215/70R-16B/W B	108.79	LT245/75R-16	133.28
P225/70R-16 B	112.03	LT245/75R-16 E	140.65
P235/70R-16 B	115.42	P265/75R-16 B	116.77
P245/70R-16 B	118.06	LT265/75R-16 C	133.86
P255/70R-16 B	122.43	LT265/75R-16 D	150.49
P265/70R-16B/W B	126.11	LT215/85R-16B/W D	119.32
P275/70R-16B/W B	129.88	LT215/85R-16B/W E	124.14
P205/75R-15 B	87.00	LT235/85R-16B/W E	126.13
P215/75R-15 B	90.30	30/9.50R-15 C	113.13
P225/75R-15 B	92.69	31/10.50R-15 C	127.27
P235/75R-15 B	97.29		PLUS FET
LT235/75R-15 C	116.24		

**FREE**  
• MOUNTING  
• ROTATIONS  
• ROAD HAZARD  
• FLAT REPAIR  
• AIR CHECKS

### Wild Country ALL SEASON RADIAL APT

The latest in tire technology. Excellent wet weather handling. Superb ride, modern design and is M&S rated. Attractive outlined white letters.

SIZE & LOAD RANGE	SUPERMARKET PRICE	SIZE & LOAD RANGE	SUPERMARKET PRICE
P215/75R-15 B	88.46	LT225/75R-16 D	129.05
P235/75R-15 B	97.13	LT235/85R-16B/W E	133.65
LT235/75R-15 C	112.58	LT235/85R-16 E	140.10
P265/75R-15 B	100.05	P245/75R-16 B	103.20
30/9.50R-15 C	122.21	LT245/75R-16 C	134.76
31/10.50R-15 C	125.98	LT245/75R-16 E	144.86
32/11.50R-15 C	143.81	P265/75R-16 B	103.40
33/12.50R-15 C	156.98	LT265/75R-16 C	130.14
LT215/85R-16B/W D	118.10	LT265/75R-16 D	141.27

**FREE**  
• MOUNTING  
• ROTATIONS  
• ROAD HAZARD  
• FLAT REPAIR  
• AIR CHECKS

### THE LOW COST LIGHT TRUCK RADIAL 6181 LT215/75R-15

This Low Cost All Season Radial features outlined white letters, a smooth ride and is economically priced.

SIZE & LOAD RANGE	SUPERMARKET PRICE
LT215/75R-15 C	61.81
LT235/75R-15 C	62.76
LT225/75R-16B/W D	69.42
LT235/85R-16B/W E	71.89
30/9.50R-15 C	66.87
31/10.50R-15 C	68.93

**FREE**  
• MOUNTING  
• ROTATIONS  
• ROAD HAZARD  
• FLAT REPAIR  
• AIR CHECKS

### Wild Country ALL SEASON STEEL RADIAL RVT

The West's most popular pickup/sport utility tire. Attractive outlined white letters. Features a deep tread design for longer mileage. M & S rated with a smooth quiet ride.

SIZE & LOAD RANGE	SUPERMARKET PRICE	SIZE & LOAD RANGE	SUPERMARKET PRICE
P215/75R-15 B	81.27	33/12.50R-15 C	151.54
P215/75R-15 B	85.27	35/12.50R-15 C	172.73
P225/75R-15 B	87.94	LT215/85R-16B/W D	113.97
P235/75R-15 B	93.77	LT215/85R-16B/W E	120.56
P265/75R-15 B	96.48	P225/75R-16 B	90.28
LT215/75R-15 C	108.71	LT225/75R-16 D	120.04
LT235/75R-15 C	108.77	LT225/75R-16 E	124.54
P225/70R-15 B	88.23	LT225/75R-16 E	130.81
P235/70R-15 B	91.11	LT235/85R-16B/W E	128.93
P245/70R-15 B	91.90	LT235/85R-16 E	135.23
P255/70R-15 B	95.59	P245/75R-16 B	99.57
30/9.50R-15 C	117.76	LT245/75R-16 C	130.03
31/10.50R-15 C	121.86	LT245/75R-16 E	140.20
32/11.50R-15 C	138.34	LT255/75R-16 C	159.18
33/9.50R-15 C	144.72	P265/75R-16 B	99.79

**FREE**  
• MOUNTING  
• ROTATIONS  
• ROAD HAZARD  
• FLAT REPAIR  
• AIR CHECKS

### ALL TERRAIN RADIAL SXT

The All Terrain Radial SXT delivers a quiet, comfortable ride, superior stability and control. If you drive a Light Truck or Sport Utility Vehicle this tire is a great choice for you.

SIZE & LOAD RANGE	SUPERMARKET PRICE	SIZE & LOAD RANGE	SUPERMARKET PRICE
P215/75R-15 B	88.84	LT245/75R-16B/W E	138.09
P225/75R-15 B	94.15	LT245/75R-16 E	145.34
P235/75R-15 B	94.28	LT255/85R-16 D	156.18
P265/75R-15 B	107.10	LT285/75R-16 C	137.79
P245/75R-16 B	113.62	LT265/75R-16 D	144.13
P265/75R-16 B	114.18	LT265/75R-16 E	152.67
P235/70R-16 B	106.84	LT285/75R-16 D	155.04
P255/70R-16 B	120.41	LT255/70R-16 C	151.60
P265/70R-17 B	135.68	LT265/70R-17 C	164.91
P265/75R-15 C	115.16	30/9.50R-15 C	116.52
LT215/85R-16B/W D	123.92	31/10.50R-15 C	126.39
LT215/85R-16B/W E	129.06	33/12.50R-15 C	153.62
LT225/75R-16B/W D	121.36	35/12.50R-15 C	166.20
LT225/75R-16B/W E	126.50	33/12.50R-16.5 D	167.81
LT235/85R-16B/W E	131.94		PLUS FET

**FREE**  
• MOUNTING  
• ROTATIONS  
• ROAD HAZARD  
• FLAT REPAIR  
• AIR CHECKS

### Wild Country TRACTION STEEL RADIAL TXR

Taller sizes for lifted applications. Great traction & Great Looks. Outlined white letters.

**PINNED FOR STUDS**

SIZE & LOAD RANGE	SUPERMARKET PRICE	SIZE & LOAD RANGE	SUPERMARKET PRICE
P235/75R-15 B	90.92	LT215/85R-16B/W D	122.95
LT235/75R-15 C	119.65	LT225/75R-16 D	127.04
30/9.50R-15 C	120.51	LT235/85R-16B/W E	140.64
31/10.50R-15 C	131.70	LT235/85R-16 E	143.95
32/11.50R-15 C	143.72	LT245/75R-16 B	150.34
33/9.50R-15 C	143.55	LT255/85R-16 D	162.58
33/12.50R-15 C	156.63	LT265/75R-16 C	137.68
35/12.50R-15 C	171.17	LT265/75R-16 D	139.58
		LT285/75R-16 D	164.18
		LT315/75R-16 D	180.26
		LT235/70R-16 C	135.76
		LT255/70R-16 C	143.95
		LT265/70R-17 C	155.65
		35/12.50R-16.5 D	190.49
		LT235/85R-16 PLUS E	154.49
		LT245/75R-16 PLUS E	165.15

**FREE**  
• MOUNTING  
• ROTATIONS  
• ROAD HAZARD  
• FLAT REPAIR  
• AIR CHECKS

### THE ALL NEW MUD TERRAIN RADIAL SXT

It is incredibly rugged and great looking. This is the newest generation in the SXT lineup.

It offers:

- Great looking white letters.
- A deep traction tread design.
- Steel belted radial Construction.
- Pinned for studs for winter driving.
- Siping for greater wet weather traction.

SIZE & LOAD RANGE	SUPERMARKET PRICE	SIZE & LOAD RANGE	SUPERMARKET PRICE
P235/75R-15 B	114.52	LT235/85R-16B/W E	148.59
LT235/75R-15 C	125.75	LT255/85R-16 D	170.50
LT235/75R-16B/W E	142.34	30/9.50R-15 C	127.22
LT245/75R-16B/W E	155.39	31/10.50R-15 C	138.01
LT265/75R-16 B	142.50	32/11.50R-15 C	163.75
LT265/75R-16 D	149.02	33/9.50R-15 C	155.71
LT265/75R-16 E	157.86	33/12.50R-15 C	167.71
LT215/85R-16B/W E	145.30		PLUS FET

**FREE**  
• MOUNTING  
• ROTATIONS  
• ROAD HAZARD  
• FLAT REPAIR  
• AIR CHECKS

### LT TRUCK SHOCKS

INTRODUCING THE ALL NEW RMX MONOTUBE PERFORMANCE SHOCK

High Pressure Nitrogen Gas and Floating Piston Technology combine to create the fastest responding shock ever. Reacting faster to bumps and absorbing impact with unmatched quickness.

**RMX MONOTUBE \$59.95 EA.**

The Mountain Ryder Premium Gas Shock is a premium gas charged shock for vans, pick-ups, 4x4s, and RV's. Extra large hydraulic reservoir and super large 1 3/8" bore combine for an on and off road performance.

**MOUNTAIN RYDER GAS \$36.95 EA.**

The Mountain Ryder II Gas Sport Truck Shock is designed todays sport utilities, mini-vans, and light trucks. With custom-tuned charging and valving for more of a responsive ride, this shock reduces sway and eliminates bottoming out.

**MOUNTAIN RYDER II \$28.95 EA.**

**SHOCK INSTALLATION IS EXTRA ON ALL SHOCKS**

### \$50 OFF TRUCK COUNTRY LIFT KITS INSTALLED

LES SCHWAB

From the Crew at I. es Schwab "Welcome to the Morrow County Fair 124 North Main • Heppner & Oregon Trail Pro Rodeo" 676-9481