

Local students nominated for Honor society Scholarship

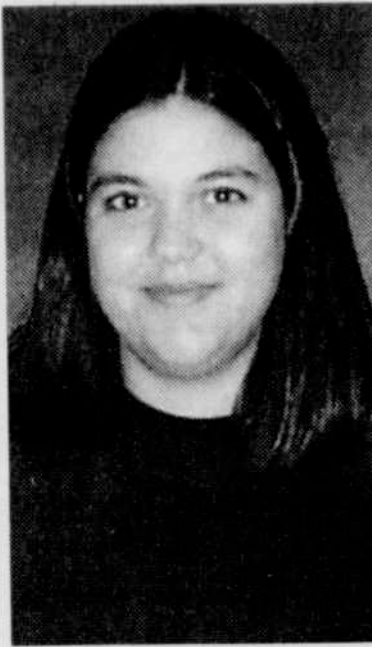


Lindsey Ward

Lindsey Ward and Danielle McDowell, Heppner High School seniors and members of the National Honor Society, have been nominated to compete in the National Honor Society scholarship sponsored by the National Association of Secondary School Principals.

These nominations place Ward and McDowell in the national competition. Two hundred national NHS winners will be chosen this spring to receive \$1,000 college scholarships.

High schools throughout the country could nominate two senior



Danielle McDowell

high members of the National Honor Society. Nominees were selected based on their leadership skills, participation in service organizations and clubs, achievements in the arts and sciences, employment experience, and academic record. They also were required to write an essay.

Ward has been student body president, junior class president, sophomore class secretary, captain and varsity letterman on the girls' golf team, Heppner Youth of the Year and a Heppner Chamber of Commerce representative. This fall she plans to attend a four-year

university to study business.

McDowell is currently student body treasurer, treasurer of the National Honor Society and a National English Merit Award winner. This fall she plans to attend a four-year university to study psychology.

NASSP is the nation's largest school leadership organization with a membership of nearly 40,000 middle level and high

school principals and assistant principals. It administers the National Honor Society, the National Junior Honor Society, the National Association of Student Councils and the National Association of the Student Activity Advisers, collectively serving an additional 50,000 advisers and more than one million students. NASSP is also the sponsor of National Leadership week.

Scholarship Trust elects officers

South Morrow County Scholarship Trust held its annual meeting on Jan. 29.

New officers for the year are: President, Bill Rietmann; Vice-President, Craig Strobel; Treasurer, Del LaRue; and Secretary, Sharon Harrison. Board members are Barbara Hayes, Bill Kuhn and Missy Cutsforth.

The South Morrow County Scholarship Trust was established several years ago to provide funds to grant scholarships to graduating seniors from Heppner and Lone high schools and to take the place of the Troedson Scholarship fund which will be discontinued in the year 2023.

Application for this year's scholarships will be available in the form of a computer disk at both high schools and at Klamath First Federal in Heppner, starting the end of February.

Greenfield plans dinner dance

The board is making plans for the annual fund raiser. This year the fund raiser will be a golf tournament at the Willow Creek Golf Course on April 21. Prizes will be awarded and lunch served.

Greenfield Grange in Boardman will hold a Sweetheart Dinner and Dance on Saturday, Feb. 10.

A roast beef and baked potato dinner will be held from 6-8 p.m., with dancing from 7-10 p.m. Cost is \$20 per couple. For dancing only, cost is \$5 per person.

A photographer will be available for a small fee.

The grange requests that interested persons RSVP by Wednesday, Feb. 7, to Edna at 481-6191, Jane at 481-5223 or Hazel at 481-4751.

MORROW COUNTY GRAIN GROWERS OREGON STATE UNIVERSITY EXTENSION

2001 GROWER MEETING



Date: Friday, February 9th
Location: Willows Grange Hall in Lone
Time: 7:30 a.m. to 12:30 p.m.
(Lunch will be provided.)

MEETING AGENDA:

- 7:00-7:30 p.m. Coffee and Doughnuts
 - 7:30-8:00 a.m. Chris Zita, Syngenta Seed Treatments: Crop protectant label updates. Adage label for 2001. Don Horneck, OSU Extension, Hermiston: Nitrogen issues: soil nutrient management under drought conditions.
 - 8:00-8:30 a.m. Steve Petrie, OSU Columbia Basin Ag. Research Center, Pendleton: Nitrogen management in DNS wheat to increase grain protein.
 - 8:30-9:00 a.m. Bryan Kliewer, Monsanto: Chemical fallow strategies with Roundup, understanding value in Roundup ready wheat.
 - 9:00-9:30 a.m. Tom McCoy, Oregon Wheat Growers League: Upcoming Farm Bill and agricultural issues.
 - 10:00-10:15 a.m. Break
 - 10:15-10:40 a.m. Dave Pranger, Morrow County Weed Control District: Noxious weed updates and viable options in noxious weed control programs.
 - 10:40-11:00 a.m. Jim Swanson, Wheatland Insurance: Program updates and comprehension.
 - 11:00-11:30 a.m. Kim Kidwell, WSU: Spring Club Wheat Program and Facultative Wheats.
 - 11:30-12:00 p.m. Kim Campbell, USDA-ARS/WSU: Club Wheat Breeding Program.
 - 12:00-12:30 p.m. Larry Lutchter, OSU Extension, Heppner: Problems, Challenges and Opportunities with Chemical Fallow.
- (Oregon Recertification and CCA credits have been applied for.)

124 N. Main Heppner 676-9481

FREE BEEF

With The Tires You Buy

February 1st through February 28th

FREE BEEF TIME AT LES SCHWAB!

"What began over 37 years ago as a way to support the farmers and ranchers of the Northwest has now become an annual tradition. All over Les Schwab Country, February means FREE BEEF with the tires you buy wherever you see the Les Schwab Sign."

HERE'S HOW IT WORKS:

\$7.50 worth of **FREE BEEF** with 2 new passenger or pickup tires or 4 retreads.
\$15.00 worth of **FREE BEEF** with 4 new passenger or pickup tires.

PASSENGER TIRES

Z800

Ultra

Our Best!

"At Les Schwab we've always been dedicated to providing the best products and services available to our customers. I believe the Z800 ULTRA is the best tire in the world today. Try a set for 30 days. If you don't agree they're the best tires you've ever owned, return them, and we'll give your money back."

Les Schwab

SIZE	SUPERMARKET PRICING	SIZE	SUPERMARKET PRICING	SIZE	SUPERMARKET PRICING
P155/80TR-13	54.06	P175/70TR-14B/W	67.96	P195/65TR-15B/W	99.69
P165/80TR-13	59.30	P185/70TR-14B/W	71.28	P195/65TR-15B/W	103.67
P175/80TR-13	62.77	P195/70TR-14B/W	74.96	P205/65TR-15B/W	107.73
P185/80TR-13	67.88	P205/70TR-14B/W	80.73	P215/65TR-15B/W	112.13
P195/75TR-14	71.06	P205/70TR-15B/W	84.61	P215/65TR-16B/W	122.77
P195/75TR-14	74.75	P205/70TR-14	84.69	P185/60TR-14B/W	86.88
P205/75TR-14	79.59	P215/70TR-14	90.00	P195/60TR-14B/W	91.49
P205/75TR-15	82.85	P205/70TR-15	88.77	P195/60TR-15B/W	96.10
P215/75TR-15	85.95	P215/70TR-15	91.45	P205/60TR-15B/W	108.11
P225/75TR-15	88.15	P225/70TR-15	93.80	P215/60TR-16B/W	119.77
P235/75TR-15	92.46	P175/65TR-14B/W	91.37	P225/60TR-16B/W	125.65
P175/70TR-13B/W	62.96	P185/65TR-14B/W	94.94	P235/60TR-16B/W	131.93
P185/70TR-13B/W	67.86	P195/65TR-14B/W	98.64		

THE TIRE FOR THE 21ST CENTURY

PASSENGER TIRES

48900

GALAXIE & GT RADIALS

40,000 MILE WARRANTY PLUS FREE BEEF

P155/80R-13

SIZE	SUPERMARKET PRICE	SIZE	SUPERMARKET PRICE
P155/80R-13	22.25	P215/75R-15	33.74
P165/80R-13	25.61	P225/75R-15	35.45
P175/80R-13	26.11	P235/75R-15	36.35
P185/80R-13	27.45	175/70R-13B/W	28.02
P185/75R-14	28.38	185/70R-13B/W	29.74
P195/75R-14	29.19	185/70R-14B/W	31.46
P205/75R-14	30.79	195/70R-14B/W	33.57
P215/75R-14	33.31	205/70R-14B/W	35.19
P205/75R-15	32.13	Tread may vary from photo	

This Is An Excellent Value On A Highway Radial. Offering A Smooth Quiet Ride And Tough Steel Belt Construction, It Comes With The Les Schwab Written Warranty At No Extra Charge

PASSENGER TIRES

SPECTRUM

4435

P155/80R-13

The Spectrum features a broad range of sizes and comes in both S and T performance ratings. Offering one of the most modern tread designs in the industry, the Spectrum provides great handling and comes with a 70,000 mile written warranty.

SIZE	SUPERMARKET PRICE	SIZE	SUPERMARKET PRICE	SIZE	SUPERMARKET PRICE
P155/80R-13B/W	44.35	P235/75R-15	79.40	P195/65TR-15B/W	89.93
P165/80R-13B/W	48.68	P175/70SR-13B/W	52.42	P205/65TR-15B/W	93.51
P175/80R-13B/W	51.53	P185/70SR-13B/W	56.64	P215/65TR-15B/W	97.40
P185/75R-14	63.85	P185/70SR-14B/W	59.56	P185/60TR-14B/W	75.06
P195/75R-14	63.89	P195/70SR-14B/W	62.73	P195/60TR-14B/W	79.13
P205/75R-14	68.13	P205/70SR-14B/W	67.70	P195/60TR-15B/W	83.23
P215/75R-15	70.66	P175/65TR-14B/W	79.02	P205/60TR-15B/W	93.84
P225/75R-15	73.29	P185/65TR-14B/W	82.17	P215/60TR-16B/W	104.18
P225/75R-15	75.18	P195/65TR-14B/W	85.48	P225/60TR-16B/W	109.37

70,000 MILE WARRANTY

PASSENGER TIRES

Wild Country

XRT

PLUS FREE BEEF

ALL SEASON STEEL RADIAL

This Low Cost All Season Radial features outlined white letters, a smooth ride and is economically priced.

SIZE & LOAD RANGE	SUPERMARKET PRICE	SIZE & LOAD RANGE	SUPERMARKET PRICE
P205/75R-14 B	56.29	33/12.50R-15 C	112.48
P205/75R-15 B	60.55	LT215/65R-16B/W D	84.00
P215/75R-15 B	61.09	LT225/75R-16B/W D	84.43
P225/75R-15 B	62.29	LT235/65R-16B/W E	88.57
P235/75R-15 B	64.09	LT245/75R-16B/W E	92.57
LT235/75R-15 C	80.03	750R-16B/W D	110.08
LT265/75R-16 C	90.95	8.00R-16.5B/W D	89.57
P265/75R-15 B	68.35	8.75R-16.5B/W D	90.66
27/8.50R-14 C	74.45	9.50R-16.5B/W D	100.85
30/9.50R-15 C	80.33	31/10.50R-16.5 D	116.56
31/10.50R-15 C	84.67		
32/11.50R-15 C	100.33		

PLUS FET