

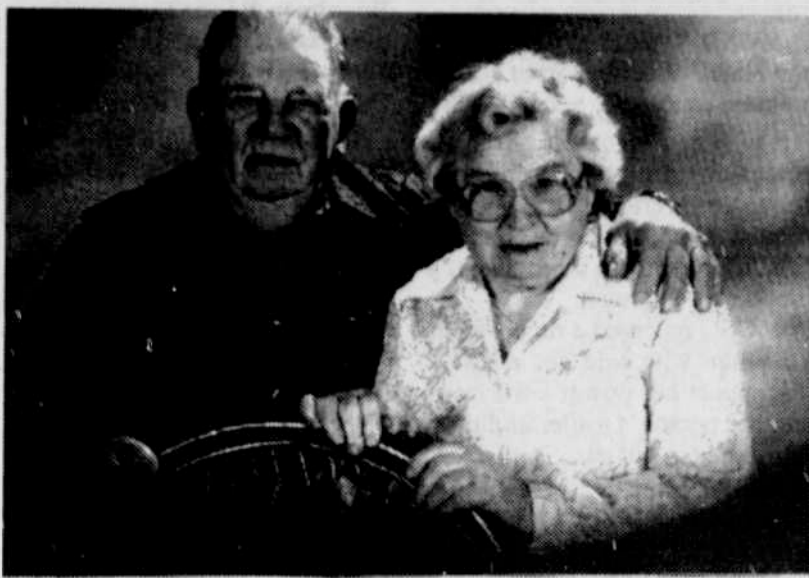
## Henry and Josie Peck celebrate 70th anniversary

Henry and Josie Peck celebrated their 70th wedding anniversary on Thanksgiving Day, Nov. 26, with their family at the OddFellow's Lodge in Heppner.

Henry and Josie's relationship began when they met at a country dance. Henry and four of friends, Orville and Aubrey Cutsforth, Elmer Peterson and Hughie Shaw, formed a dance club. The dances were held at different homes around the country. The dance club provided the food and cleanup. Their rules were simple - no alcohol, no fighting.

Henry and Josie were married Nov. 25, 1928 in Ione by brother-in-law John Garinger.

Henry and Josie had 10 children, nine of whom are still living. They have 30 grandchildren, 41 great-grandchildren and two great-great-grandchildren.



Henry Glover Peck and Josie Lovene Rowell Peck

## County students in who's who

A total of 21 students from this area are included in the 32nd Annual Edition of Who's Who Among American High School Students, 1997-98.

Local students selected include: Ione-Jessica Krebs, Niki Sullivan and Tysoh Robins; Boardman-Jason Calloway, Karla Luce, Jenny Prag, Kelly Redinger, Clint Shoemaker, Michael Dean, Ryan Neal, Janie Price, Jessica Rencken, and Lucas Skoub; Irrigon-Ryan Butler, Loren Hughes III, Jessica Moore, Marshall Sanders, Melissa Hadley, Kristen Johnson, Jacob Plisek and April Vice.

Who's Who, published by Educational Communications, Inc., Lake Forest, Illinois, is the largest recognition program and publication in the nation honoring high achieving high school students, according to a Who's Who news release.

Students are nominated by high school principals and guidance counselors, national youth groups, churches and educational organizations based upon students' academic

achievement and involvement in extracurricular activities. Traditionally, 99 percent of Who's Who students have a grade point average of 'B' or better and 97 percent are college bound.

The 32nd Annual Edition of Who's Who Among American High School Students, 1997-98, published in 18 regional volumes, features over 700,000 students or just 5 five of the nation's 14,000,000 high school students. They represent approximately 20,000 of the 24,000 public, private and parochial high schools in the country.

Who's Who students also compete for \$200,000 in scholarship awards and participate in the publication's "Annual Survey of High Achievers", an annual opinion poll of teen attitudes. The book is distributed to up to 15,000 high schools, colleges, universities and public libraries throughout the country. To learn more about Who's Who Among American High School Students, visit [www.honoring.com](http://www.honoring.com).

## Boardman awards banquet Dec. 4

The annual Boardman Community Awards Banquet will take place Friday, December 4, at the Greenfield Grange.

The annual banquet is sponsored by the Boardman Chamber of Commerce and is open to the entire community.

The banquet tickets, at \$18 each, include facilities rent, a prime rib dinner, a gratuity and decorations. Tickets are available at the Chamber of Commerce Office, 206 North Main Street, Boardman, at Umatilla Electric Coop and at Boardman Pharmacy. Greenfield Grange is a "no alcohol" facility.

The highlight of the banquet is presentation of awards to the surprised recipients. Sharon Barrick, a past educator of the year, recipient, will chair the nomination judging committee. "1998 was a wonderful year in

terms of community activities and projects that made a difference for Boardman," says Chamber of Commerce Director Carol Michael. "I feel it is going to be a challenge for the committee to identify just one winner in each category."

Boardman Community Awards banquet tickets are available at Umatilla Electric Coop; Boardman Pharmacy & Hardware; Boardman City Hall and Boardman Chamber of Commerce. Seating is limited, and guests are encouraged to tickets prior to the December 4 banquet, says Michael. Those purchasing their tickets prior to December 4 will have their names entered in a special prize drawing.

## High school basketball schedules

Heppner High School (HHS), Heppner Junior High School (HJHS), Ione High School (IHS) and Ione Middle School (IMS) have released the tentative basketball schedules for 1998-99:

**HHS basketball schedule:**  
\* = league games

**Friday, Dec. 4-Umatilla** at Heppner, JVG/JVB/VG/VB, 3 p.m.;

**Saturday, Dec. 5-Ione** at Ione, JVG/JVB/VG/VB, 1 p.m.;

**Tuesday, Dec. 8-Ione** at Heppner, VG/VB, 5 p.m.;

**Thursday, Dec. 10-Ione** at Heppner, JVG/JVB, 5 p.m.;

**Friday, Dec. 11-Condon** Tournament vs. Wallowa at Condon, VG/VB, 3 p.m.;

**Saturday, Dec. 12-Condon** Tournament at Condon, VG/VB, time TBA;

**Friday, Dec. 18-Morrow** County Tournament at Boardman, VG/VB, time TBA;

**Saturday, Dec. 19-Morrow** County Tournament at Boardman, VG/VB, time TBA;

**Saturday, Jan. 2-Umatilla** at Umatilla, JVG/JVB/VG/VB, 1 p.m.;

**Friday, Jan. 8-Pilot Rock\*** at Heppner, JVG/JVB/VG/VB, 3 p.m.;

**Saturday, Jan. 9-Wahtonka\*** at The Dalles, JVG/JVB/VG/VB, 1 p.m.;

**Friday, Jan. 15-Stanfield\*** at Heppner, JVG/JVB/VG/VB, 3 p.m.;

**Saturday, Jan. 16-Sherman** County\* at Heppner, JVG/JVB/VG/VB, 1 p.m.;

**Tuesday, Jan. 19-Echo** at Echo, VG/VB, 6 p.m.;

**Friday, Jan. 22-Culver\*** at Culver, JVG/JVB/VG/VB, 3 p.m.;

**Saturday, Jan. 23-Bye**

**Friday, Jan. 29-Weston-McEwen\*** at Heppner, JVG/JVB/VG/VB, 1 p.m.;

**Saturday, Jan. 30-Wahtonka\*** at Heppner, JVG/JVB/VG/VB, 1 p.m.;

**Friday, Feb. 5-Pilot Rock\*** at Pilot Rock, JVG/JVB/VG/VB, 3 p.m.;

**Saturday, Feb. 6-Sherman** County\* at Moro, JVB/JVG/VG/VB, 1 p.m.;

**Friday, Feb. 12-Bye**

**Saturday, Feb. 13-Culver\*** at Heppner, JVG/JVB/VG/VB, 1 p.m.;

**Friday, Feb. 19-Weston-McEwen\*** at Athena, JVG/JVB/VG/VB, 3 p.m.;

**Saturday, Feb. 20-Stanfield\*** at Stanfield, JVG/JVB/VG/VB, 1 p.m.;

**Feb. 25-26-District** Tournament at Pendleton, time TBA;

**March 2-6, State** Tournament at Pendleton, time TBA.

**HHS C-team**

**Thursday, Dec. 3-Weston-McEwen** at Heppner, G/B, 5:30 p.m.;

**Monday, Dec. 7-Umatilla** at Umatilla, B, 5:30 p.m.;

**Tuesday, Dec. 8-Riverside** D at Heppner, B, 3:30 p.m.;

**Saturday, Dec. 12-Spray** at Heppner, B, 12 noon;

**Monday, Dec. 14-Pilot Rock** at Pilot Rock, B, 6 p.m.;

**Tuesday, Dec. 15-Riverside** D at Boardman, B, 6 p.m.;

**Tuesday, Dec. 15-Pendleton** D at Heppner, G, 6 p.m.;

**Monday, Dec. 21-Riverside** C at Heppner, B, 5 p.m.;

**Tuesday, Dec. 22-Ione** at Heppner, G, 6 p.m.;

**Thursday, Jan. 7-Pilot Rock** at Heppner, G/B, 5:30 p.m.;

**Friday, Jan. 15-Weston-McEwen** at Athena, G, 4 p.m.;

**Tuesday, Jan. 19-Ione** at Heppner, G/B, 5:30 p.m.;

**Thursday, Jan. 21-Pendleton** D at Pendleton, G, 6 p.m.;

**Thursday, Jan. 21-Spray** at Spray, B, 6 p.m.;

**Saturday, Jan. 23-Ione** at Ione, G, 1 p.m.;

**Monday, Jan. 25-Condon** at Condon, G/B, 5:30 p.m.;

**Tuesday, Jan. 26-Weston-McEwen** at Athena, G/B, 5:30 p.m.;

**Monday, Feb. 1-Condon** at Heppner, G/B, 5:30 p.m.;

**Thursday, Feb. 4-Riverside** C at Boardman, B, 5 p.m.;

**Saturday, Feb. 6-Echo** at Echo, G, 1 p.m.;

**Tuesday, Feb. 9-Ione** at Ione, G/B, 5:30 p.m.;

**Thursday, Feb. 11-Spray** at Heppner, B, 6 p.m.;

**Tuesday, Feb. 16-Umatilla** at Heppner, B, 6 p.m.

**HJHS boys' basketball schedule:**

**Friday, Dec. 4-Umatilla** at Umatilla, 1 p.m.;

**Saturday, Dec. 5-Columbia** at Heppner, 10 a.m.;

**Friday, Dec. 11-Athena-** Weston at Heppner, 3 p.m.;

**Saturday, Dec. 12-Pilot Rock** at Heppner, 10 a.m.;

**Friday, Dec. 18-Stanfield** at Heppner, 3 p.m.;

**Saturday, Dec. 19-Seventh** Grade Tournament, site TBA, 9 a.m.;

**Saturday, Dec. 19-Eighth** Grade Tournament at Weston, 9 a.m.

**IHS basketball schedule:**

**Friday, Dec. 4-Pilot Rock** at Pilot Rock, JVG/JVB/VG/VB, 3 p.m.;

**Saturday, Dec. 5-Heppner** at Ione, JVG/JVB/VG/VB, 1 p.m.;

**Tuesday, Dec. 8-Heppner** at Heppner, VG/VB, 6 p.m.;

**Thursday, Dec. 10-Heppner** at Heppner, JVG/JVB, 6 p.m.;

**Dec. 11-12-Ione** Tournament at Ione, VG/VB, time TBA;

**Tuesday, Dec. 15-Stanfield** at Ione, JVG/JVB/VG/VB, 3 p.m.;

**Dec. 18-19-Morrow** County Tournament at Boardman, VG/VB, time TBA;

**Monday, Dec. 21-Umatilla** at Umatilla, JVG/JVB/VG/VB, 3 p.m.;

**Saturday, Jan. 2-Pilot Rock** at Ione, JVG/JVB/VG/VB, 1 p.m.;

**Thursday, Jan. 7-New South** Wales at Ione, JVB/VB, time TBA;

**Friday, Jan. 8-Touchet, WA.** at Touchet, WA., JVG/VG, 4 p.m.;

**Saturday, Jan. 9-Dufur** at Dufur, JVG/JVB/VG/VB, 1 p.m.;

**Friday, Jan. 15-Condon** at Condon, JVG/JVB/VG/VB, 3 p.m.;

**Saturday, Jan. 16-Arlington** at Ione, JVG/JVB/VB, 1 p.m.;

**Tuesday, Jan. 19-Heppner** "C" team at Heppner, JVG/JVB, 5:30 p.m.;

**Friday, Jan. 22-Helix** at Helix, JVG/JVB/VG/VB, 3 p.m.;

**Saturday, Jan. 23-Wheeler** at Ione, JVG/JVB/VG/VB, 1 p.m.;

**Friday, Jan. 29-Echo** at Ione, JVG/JVB/VG/VB, 3 p.m.;

**Saturday, Jan. 30-Arlington** at Arlington, JVG/JVB/VB, 1 p.m.;

**Friday, Feb. 5-Condon** at Ione, JVG/JVB/VG/VB, 3 p.m.;

**Saturday, Feb. 6-Helix** at Ione, JVG/JVB/VG/VB, 1 p.m.;

**Tuesday, Feb. 9-Heppner "C"** team at Ione, JVG/JVB, 5:30 p.m.;

**Friday, Feb. 12-Echo** at Echo, JVG/JVB/VG/VB, 3 p.m.;

**Saturday, Feb. 13-Wheeler** at Wheeler, JVG/JVB/VG/VB, 1 p.m.;

**Feb. 19-20-District** Tournament at Hermiston, time TBA;

**March 3-6-State** Tournament at Baker City, time TBA.

**IMS basketball schedule:**

**Friday, Dec. 11-Echo** at Echo, 11 a.m.;

**Friday, Dec. 18-Arlington** at Arlington, 2 p.m.;

**Saturday, Dec. 19-Helix** at Helix, 11 a.m.;

**Friday, Jan. 8-Helix** at Ione, 3 p.m.;

**Saturday, Jan. 9-Echo** at Ione, 11 a.m.;

**Friday, Jan. 15-Condon** at Condon, 12 noon;

**Saturday, Jan. 16-Fossil** at Ione, 11 a.m.;

**Friday, Jan. 22-Arlington** at Ione, 3:30 p.m.;

**Saturday, Jan. 23-Helix** Tournament at Helix, 10 a.m.;

**Friday, Jan. 29-Echo** at Ione, 11 a.m.;

**Friday, Feb. 5-Condon** at Ione, 12 noon.

## Christmas tree permits available

Christmas tree permits are now available at all offices on the Umatilla National Forest and at several local vendors.

In Heppner, permits may be purchased at Miller's Mini-Mart.

Permits are available for \$5 per tree. There is limit of one tree per household, although friends, relatives and neighbors may pick up permits for others.

One Christmas tree permit is required for each tree cut. Permits are valid on federal Forest Service lands only and do not authorize tree cutting on private, state or other federally managed lands.

Douglas fir and Englemann spruce are the most popular trees, though insect infestation and disease have left these species a little bedraggled, said a Umatilla National Forest news release. Ponderosa pine and lodgepole make unique fragrant alternatives, they suggested.

Permits and forest maps may be purchased during regular office hours Monday through Friday at the supervisor's office in Pendleton and at the four district offices in Heppner and Ukiah and Walla Walla and Pomeroy, Washington.

**Copies 10¢**  
Gazette-Times 676-9228

## Lexington News

By Delpha Jones

Robert Taylor underwent major surgery at Good Shepherd Community Hospital recently.

Callers at the Cecil Jones' home recently were daughter Charlene Whitney of Portland; Jo Irvin of Irrigon; and niece Vicki Bowen of Goldendale, WA.

## Submit Christmas articles now

Area pastors are invited to submit their Christmas messages for publication in the Dec. 23 Christmas issue of the Gazette-Times.

The deadline for submission is Friday, Dec. 18, at 5 p.m. Entries should be legible and double-spaced and include a contact phone number.

The G-T also invites notices of church Christmas programs and activities, but as separate articles.

For more information, call April at 676-9228.

## SWCD Weed

### Board to meet

A regular board meeting of the Morrow SWCD/Weed Advisory Board will be held Tuesday, December 8, at 8 a.m. at Beecher's in Ione.

Agenda items include: Conservation Reserve Program status report, manager report, Weed policy guidelines, amendment of Morrow County Weed ordinance and agency reports.

The meeting is open to the public.

## Fire cutting season ends in

### John Day district

Firewood cutting on the Umatilla National Forest ended November 30, when woodcutting areas on the North Fork John Day Ranger District closed.

All other firewood cutting areas on the Umatilla National Forest closed earlier in the season.

Permits for the 1999 Firewood Season will be available in May.

## BMCC closed December 4

This Friday, Dec. 4, is a staff in-service day at Blue Mountain Community College and day classes will not be held.

The main campus and all outlying centers will be closed so that staff may participate in planning and budgeting sessions.

FAX - Send or Receive  
Gazette-Times 676-9211

FAX PAPER  
Gazette-Times 676-9228

## Retirement Open House

*Shirley Thompson is retiring after almost 14 years with the Port of Morrow. Come join us in saying "Happy Retirement" to Shirley*

Wednesday, December 9, 1998  
4:00 - 6:00 p.m.  
Port of Morrow Main Office  
Boardman, Oregon

*"The best memories are often made of good friends and a little slice of time to be together"*



## MCGG'S BIG TIRE SALE

through Dec. 12th

<b>Hood Traction King</b>	
L.T. 245/75R16 .....	\$112.00
L.T. 235/85R16 .....	\$112.36
<b>Hood Mud King</b>	
L.T. 235/75R15 .....	\$93.75
L.T. 235/85R16 .....	\$109.99
<b>Co-Op Pacemark M/S</b>	
P175/70R13 .....	\$53.80
P185/75R14 .....	\$51.10
P215/75R15 .....	\$60.75
<b>Wintermaster Plus</b>	
P155/80R13 .....	\$44.89
P175/80R13 .....	\$52.20
P185/80R13 .....	\$55.26

Tire studding available

### Morrow County Grain Growers

1-800-452-7396    350 Main    CENEX LAND OLIVES SUNI  
Lexington, Oregon    989-8221

For farm equipment, visit our web site at [www.mcgg.net](http://www.mcgg.net)



## BUCKNUM'S TAVERN

NEW GUARANTEED HOURS!

Monday: 6 a.m. - Midnight  
Tuesday: 6 a.m. - Midnight  
Wednesday: 6 a.m. - Midnight  
Thursday: 6 a.m. - Midnight  
Friday: 6 a.m. - Midnight  
Saturday: 6 a.m. - Midnight  
SUNDAY: 8 a.m. - 10 p.m.