

## Noxious weeds, how serious a threat to our land?

Editor's note: the following article was submitted by Dave Pranger, Morrow County weed control supervisor.

It's almost impossible to overstate the destructiveness of noxious weeds. They are running rampant throughout the Northern Plains and intermountain regions of our northwestern states, rendering once productive land virtually useless.

The most threatening species of these weeds are leafy spurge, knapweeds, Canada thistle, musk thistle and bindweed. Others can be serious problems in certain areas.

Where these weeds grow in significant infestations, they prevent use of land for grazing by wild and domestic animals. They crowd out valuable native vegetation. And one such weed-knapweed-can actually be toxic to nearby grasses.

Nobody escapes the ravages of noxious weeds-nor the responsibility for supporting efforts to rescue our land in whatever way we can.

True, it is easy to dismiss noxious weeds as a problem, belonging solely to agriculture. And indeed, the damage to our farms and ranches has been staggering.

But the fact is, noxious weeds are ruining things for all of us.

They are rendering sports and recreation areas useless-and destroying the businesses that serve them. Access to water is being restricted. Parks, preserves, and even wilderness areas are losing their attractiveness for visitors and hunters.

The bottom line is a devastating loss in land values which none of us can afford.

Before man settled in this area, grasses and other native vegetation grew so thick and in such balance that plant life not native to the area could not gain a foothold.

But as settlers replaced nomadic Native Americans, fencing and overgrazing quickly thinned native grasses, allowing weeds to take hold. Movement of hay and other feeds containing weed seeds established infestations where none existed before.

Not only are noxious weeds tough and persistent, they have abundant reproductive capacity. Many are deep-rooted, so that even if their tops are killed, they can regenerate from root segments that remain viable deep in the soil. Many are prolific seed producers. Most are perennials.

What this means is that no matter how effective the control method, if it is employed for only one season, the weeds will

be back in a year or two. For really effective control, we must deal with them on a broad regional basis wherever infestations are scattered.

Although we know we can never restore our land to its native state, we can regain a measure of its potential beauty and productivity.

First, we must find, correctly identify and map or record all noxious weed infestations. Individual landowners can begin by mapping out weeds on their own property. In some states, county government, U.S. Forest Service, Bureau of Land Management and wildlife refuge land managers are already doing this for areas they manage.

Second, a control plan should be drawn up to ensure that the best method of control for each specific area is selected. This is where modern technology can play a major role. Today, an array of measures can be applied as needed, including highly selective and safe-to-use herbicides, new advances in biological control, selective grazing and burning, plus new land use management methods that help prevent weeds from becoming established.

For most of us, one of the essential reasons we live here is the land and what it yields, both economically and aesthetically. Herdsmen, sportsmen, and those who simply enjoy the life this area offers cannot afford to let it be lost to pests that can, with a little effort and time, be defeated.

To accomplish this, we must work together whenever possible. For more information about noxious weed control in Morrow County, contact Dave Pranger at 676-9061, ext. 17.

## BMCC West offers

### Quicken for farmers

Alan Nelson, coordinator of the Farm Business Management program (FBMP) for Blue Mountain Community College, is offering a FBMP tie-in course. Quicken for the Farmer starts with three classes, which introduce users to the computer keyboard. After that, participants get into Quicken to learn how to apply the program to farm accounting.

Nelson describes Quicken as inexpensive and easy to use. Users can also upgrade to Quickbooks after they've become proficient in Quicken. Another selling point is Quicken has both Apple and Window-compatible versions.

This 12 week course will begin Thursday, September 21,

and will be held on Thursdays from 1-4 p.m. at the Hermiston West Campus. Cost of the course is \$200 which includes the cost of the 1996 Farm Business Management program (\$100 per year). There is an additional \$40 lab fee.

In the FBMP, participants will have the opportunity to implement what they learned in the Quicken class. The program will increase management skills through good farm record keeping and the use of other

business tools. Each farm serves as a laboratory project for the farmer/participant.

Features of the program include: on-the-farm conferences and consultations, the ability to tailor the session to your specific situation, periodic classroom instruction and exposure to the newest financial management techniques.

For more information, contact Nelson at 276-1260 ext. 323, or call BMCC West Campus at 567-1800.

## Seed Wheat

Clean - Large Kernel

## Mac Vicar

Processed or out of bin

Ken Turner 676-9710

## Fun For Fall

Type	Day	Time	League Name	Numbers team	Start Date
Mixed	Sunday	5:30 p.m.	Dime A Dozen	4, 2 men/2 women	Sept. 10
Mixed	Monday	9:30 a.m.	Senior	Individual	Every Mon.
Men	Monday	7 p.m.	Monday Nite Trio	3	Sept. 11
Women	Tuesday	7 p.m.	SpareTimers	4	Sept. 5
Mixed	Wednesday	9:30 a.m.	All Nighters	3	Sept. 6
Men	Wednesday	7 p.m.	Blue Mountain	5	Sept. 6
Women	Thursday	9:30 a.m.	Koffee Kup Kergler	3	Sept. 7
Mixed	Thursday	7 p.m.	Thursday Night Mixers	4	Sept. 7
Mixed	Friday	7 p.m.	Friday Mixed	4	Sept. 8

## Hey Kids

Join Junior Bowling League  
Join The Fun

Tuesday, 4 p.m. age thru 13  
Sunday, 1 p.m. age thru 19

## League Registration ANYTIME

### Heppner Bowl

180 N. Chase, Heppner  
(503) 676-9935

Bowling Lanes are going to be resurfaced on September 7-8

## Bridal Tables

Marti Baker & Kevin Mossman

Wedding September 9

Jenni Weygandt & Richard McElligott

Wedding September 9

 **Murray's Drug** INC.  
217 North Main Heppner 676-9158

# \$500 REWARD

Leading to the arrest and conviction of person or persons responsible for vandalizing the ATM machine at the Lone Branch, Bank of Eastern Oregon.

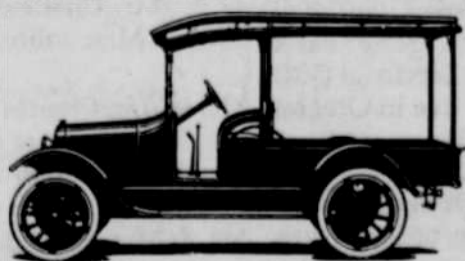
Contact Roy Drago, County Sheriff  
Morrow County 676-5317



GENUINE CHEVROLET™

Remember when your word was your Bond. - You sealed a deal with a handshake - That's still the way we do business today.

COMFORTABLE • TRUSTFULL • HONEST • CARING



The Largest Volume Chevy Truck Dealer in Eastern Oregon

**SHERRELL CHEVROLET**

Hermiston, Oregon 1-800-567-6487

New Car Sales  
567-6488

Used Car Center  
567-3919

# HUNTING

# SIGNS

NO TRESPASSING

PRIVATE PROPERTY

ABSOLUTELY NO HUNTING

NO VEHICLES BEYOND THIS POINT

more in stock  
only **15¢** ea.

WELCOME TO HUNT NO VEHICLES

The Heppner

# GAZETTE-TIMES