

Nolans Sept. Yard of Month



Lexington's yard of the month winners are front: Daniel Nolan, Nathan, Tami and mother Heather Nolan

Gary and Heather Nolan, 285 E. Front St., were chosen for the September yard of the month by the Lexington Garden Bugs.

The Nolans have a spacious well-kept lawn with a border of pretty flowers along the front and many shade trees.

Cub Scouts hold first meeting

Heppner Cub Scout Pack No. 661 will observe its first meeting of the school year at 7 p.m. Wednesday, Sept. 26 in the elementary school multipurpose room.

All boys are welcome, according to Cubmaster Jeff Wallace. Boys do not have to have previous membership in scouts. They may join one of four programs in Cub Scouts depending on grade level.

Tiger Cubs is for boys in the first grade and their adult partners. Boys who are in the second grade can join a Wolf den and work toward the

Wolf Badge.

Third graders can join a Bear den. Scouts continue to increase their skills and interests while earning the Bear badge.

Webeo Scouts are in the fourth or fifth grade. They work on badges related to hobby and career subjects and attend overnight campouts with Boy Scout troops.

In addition, all Cub Scouts participate in a pinewood derby and a community project. For further details call Ronda Wallace at 676-5213.

Ione varsity beats Echo, Heppner; loses to Condon

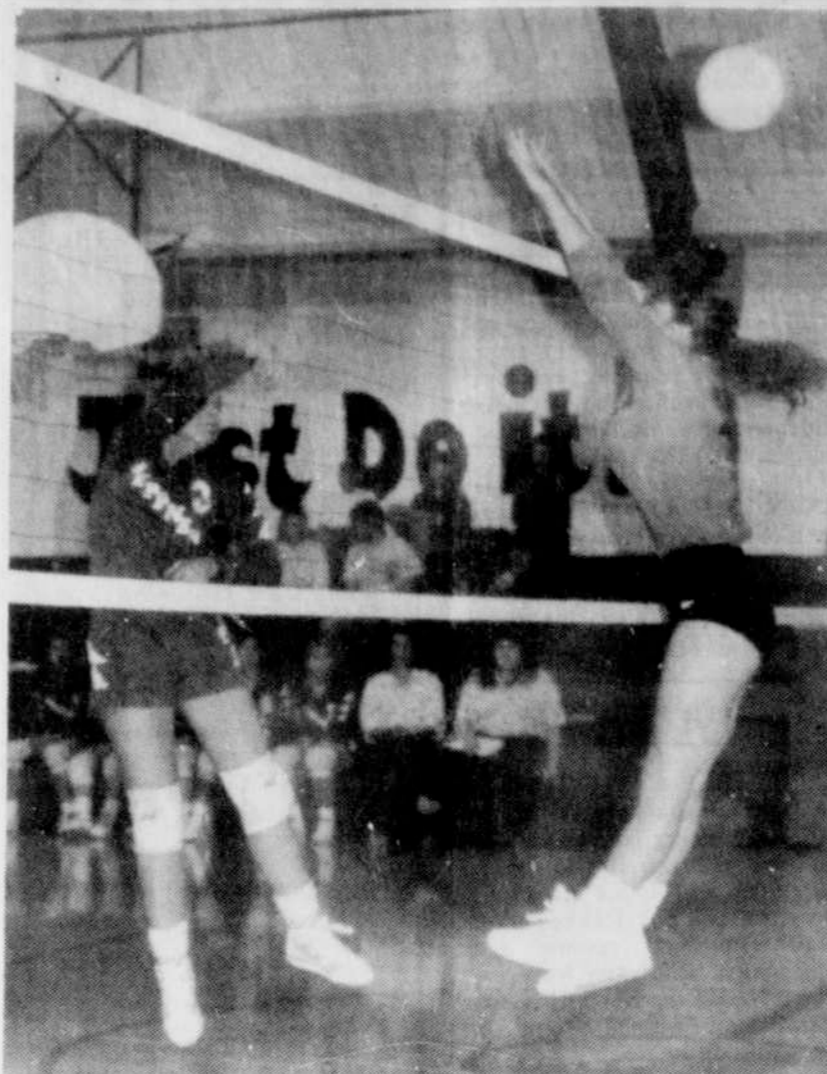


Photo by Judy Barber

Heppner's Nikki Brisbois (3) goes up against an lone player

By Anne Morter

The Ione Varsity volleyball team finished a hectic week of games with mixed results. On Tuesday, they rolled past Echo in two games and on Thursday, they won a hard fought battle against Heppner in three games. Both matches were played in Ione. Finally on Friday, they lost to a revamped Condon squad in two games on the Condon home court. The JV team defeated Echo but lost to Heppner and Condon.

Echo was an easy 15-1, 15-4 win for the Lady Cards. According to coach Jocelyn Jones, her team played smoothly while Echo had trouble. She said that she was able to substitute quite liberally and spread around the playing time. She commented that the team had outstanding serving and passing during the game.

The JV team came from behind to down the Cougars, 15-13.

The Heppner match was a close one. In the first game, Ione scrambled back from a 13-3 deficit to win 15-13. The Fillies took the second game 15-11 and Ione came on strong in the third game to win, 15-5, and sew up the match.

Coach Jones said the Lady Cards looked "awful" at first. "It was the worst we have played but we progressively got our act together," she commented. Jones added that senior Wendy Anderson and sophomore Danielle Stefani had good performances. Anderson had the top passing percentage as well as a couple of stuff-blocks. Stefani came through with good passing and vastly improved hitting. She said that the Cards' overall serving was "not outstanding" but that Nancy Morter and Brandi Ball had good serving statistics.

The JV team struggled, losing in two games, 15-3, 15-0.

The Cardinals finished the week losing to Condon in two games, 12-15, 11-15. They found the Condon team much improved since their last meeting just a week before at the Wahtonka Tournament. Ione defeated the Blue Devils there.

The Lady Cards played "flat" in the words of their coach and Condon was very ready for them. "We didn't play especially poor but we

didn't play especially good either," said coach Jones.

Highlights for the Lady Cardinals were 100 percent serving by Nancy Morter and Amy Pointer and good passing by Danielle Stefani.

The JV team lost 5-15, 4-15.

The Cardinals play at home on Friday night against Cascade Locks. Jones expects them to be a tough team and give her squad a good match. Game time is 5 p.m.

Margo Sherer receives Marylhurst certificate

A certificate from Marylhurst College, which recognizes the professional qualifications of county treasurers and county finance officers, was presented to Morrow County Treasurer Margo Sherer by state Treasurer Tony Meeker, Sept. 18 in Newport.

The special certificate was presented to Sherer and seven others as part of the annual convention of the Oregon Association of County Treasurers and Finance Officers (OACTFO), held in Newport. Mike Burton, assistant to the president at Marylhurst College, was also on hand for the presentation.

The eight recipients, all Oregon county treasurers, were the first such professionals to have completed the certification program at Marylhurst

College. They are, in addition to Sherer, Linda May, Wasco County; Mary L. Jamison, Jackson County; Helen M. Rastovich, Deschutes County; George Shelley, Washington County; Mary Kuenzli, Lincoln County; Nancy McClain, Clackamas County, who is chairman of Certification for OACTFO; and Karen Richards, Tillamook County. Sherer is current President of OACTFO.

Professional qualifications for Oregon county treasurers and finance officers were established last year by Marylhurst and OACTFO for the special program, the only one of its kind in the state. Marylhurst is currently developing an ongoing certification program which will be implemented this year.

Carlsons honor Claude Graham

Louis and Betty Carlson entertained dinner guests in honor of Claude Graham's birthday. Enjoying the evening were Cecil and Delpha Jones, Jo and Harold Pettyjohn, Dorris Graves and Happy and Claude Graham. Claude was presented with a piece of peach pie with a candle in it in celebration.

Other special guest was Lorrin Graves, mother of Betty and Jo, who will be leaving to Arizona soon for the winter.

Guests were entertained with a video tape of Morrow Co., including the Father's Day celebration in Hardman, the Hardman cemetery and Heppner. The tape was made by Larry Reaney of Portland.

WARNING

Irv Rauch

Is a candidate for Morrow County Commissioner

Paid for by Irv Rauch

HUNTER'S BREAKFAST

Sept. 29-30

Starting at 5 a.m.

Breakfast-Dinner-Supper

Hardman Community Center

FALL BULBS

Now in **Green Feed**

676-9422

DOG FOOD

\$12⁵⁰ 50 lb.

\$14⁵⁰ Hi Pro

CAT FOOD

\$8⁷⁵ 20 lb.

Stop by and see the new owners

Mike and Kay Proctor

BEST SEPTEMBER BUYS

HEAVY-DUTY GREASE GUN

LOADS THREE WAYS: CARTRIDGE, DISPENSER OR BULK

\$5⁹⁵

50' INDOOR/OUTDOOR EXTENSION CORD

EXTRA HEAVY DUTY, 3 CONSTRUCTION, 18 GAUGE CONSTRUCTION #1518

\$8⁹⁹

Heppner Auto Parts

Because there are no unimportant parts.

676-9123 148 E. Center Heppner

New at the **SHOE BOX**.....

LUGGAGE (Softside Tapestry)

5 pc. Set by Unicornsug. retail \$309⁹⁵ our price \$179⁹⁹

28" reg. price \$75⁰⁰ our price \$59⁹⁹

26" reg. price \$66⁹⁵ our price \$49⁹⁹

Overnighter reg. \$59⁹⁵ our price \$34⁹⁹

Carry-On reg. \$49⁹⁵ our price \$24⁹⁹

Clothes Bag reg. \$65⁹⁵ our price \$49⁹⁹

Duffle Bags by Totech (nylon)

Large reg. price \$34⁹⁵ our price \$22⁹⁹

Small reg. price \$30⁹⁵ our price \$19⁹⁹

Clothes bag & carry-on Combo reg. price \$99⁹⁵ our price \$64⁹⁹

CLEARANCE SPECIAL

L.A. Gear.....Billie Jean style

Womens reg. price \$75⁹⁵ now \$55⁹⁹

Youth reg. price \$63⁹⁵ \$44⁹⁹

Tires LES SCHWAB

FREE GUN GIVE-AWAY

Enter to win a 12-Gauge shotgun

Sept. 24 - Oct. 6

STOP BY AND ENTER

No purchase necessary

Must be 18 years or older

ALL POSITION RADIALS WILDCAT

ALL-POSITION STEEL RADIAL			
* Featuring a modern design and attractive Outlined White Letters, the Wildcat provides excellent year around performance.			
SIZE	LOAD RANGE	SUPERMARKET PRICE	LOAD RANGE
P195/75R-14	B	61.54	LT215/85R-16sw D
LT195/75R-14	C	80.23	LT225/75R-16sw D
P205/75R-15	B	66.44	LT235/85R-16sw D
P215/75R-15	B	69.09	LT235/85R-16sw E
LT215/75R-15	C	89.48	LT235/85R-16
P235/75R-15	B	76.72	LT245/75R-16sw D
LT235/75R-15	C	94.08	LT255/85R-16
27/8.50R-14	C	82.29	LT265/75R-16
30/9.50R-15	C	95.66	8.75R-16.5sw
31/10.50R-15	C	106.76	9.50R-16.5sw
31/11.50R-15	C	113.13	33/12.50R-16.5
33/12.50R-15	C	123.41	

PLUS FEET

OPEN COUNTRY +4

ALL-POSITION STEEL RADIAL

* A premium quality radial, this unique tire delivers excellent year around traction with its aggressive shoulder lugs and cleats. Tough steel belt construction resists against road hazards and it offers attractive outlined white letters.

SIZE	LOAD RANGE	SUPERMARKET PRICE	SIZE	LOAD RANGE	SUPERMARKET PRICE
LT215/75R-15	C	94.70	LT225/75R-16	D	129.52
LT235/75R-15	C	103.99	LT235/85R-16	D	132.70
30/9.50R-15	C	110.74	LT235/85R-16	E	139.34
31/10.50R-15	C	124.60	LT245/75R-16	E	144.80
31/11.50R-15	C	133.65			
LT215/85R-16	D	121.84			

PLUS FEET

RADIAL A/P

ALL-POSITION STEEL RADIAL

* A quality All-Position Pickup Radial in one of our most popular sizes. It has quality Raised White Letters and a 10 ply load rating.

94⁹⁹

LT235/85R-16 E (10 PLY)

PLUS FEET

HEPPNER

MasterCard VISA