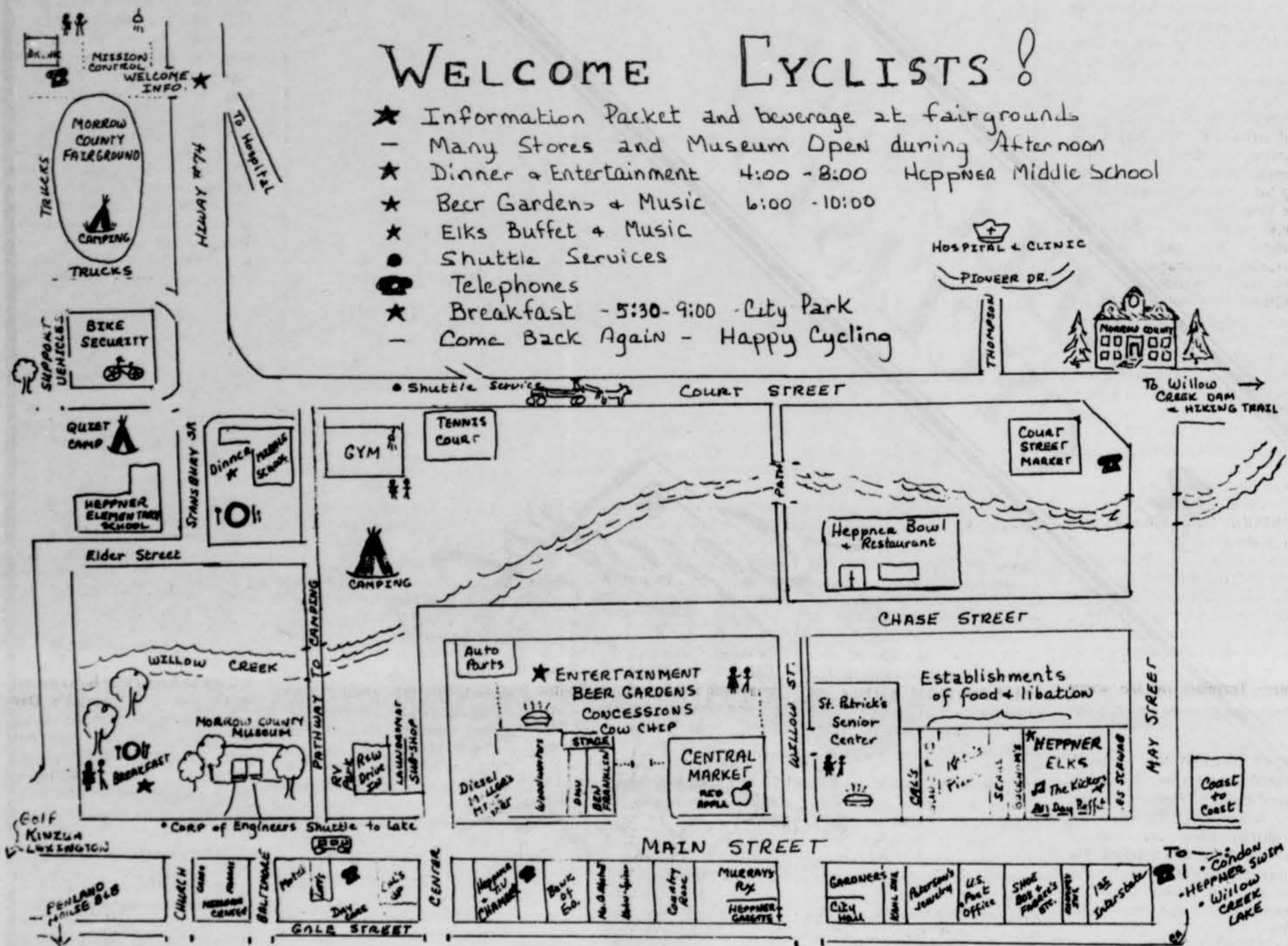


# Map of Heppner



## Museum—A Storehouse of Heppner Heritage



Lil Boyce shows off display at Morrow County Museum

The Morrow County Museum, a storehouse of local history, is located on Main Street in Heppner, near the city park.

Six exhibit rooms display over 5000 items, primarily pioneer artifacts and family memorabilia. Hundreds of photographs document the social, economic, and technological development of Morrow County.

Exhibits Ranging from 100-year-old medical instruments to native

American artifacts to contemporary work of area artists make the Morrow County Museum fascinating to casual visitors and students of local history.

The museum is open year-round, 1-5 p.m. daily except Thursdays and Fridays.

Next to the museum and library is an old one-room school house relocated here on July 4, 1976 as part of the Heppner Bi-Centennial

celebration. The school and its little outhouse were originally located at Democrat Gulch, approximately 30 miles south west of Heppner. Members of the farming community in that area sent their children to school in the building from 1880-1940.

### New signs welcome visitors

Heppner has put out a new welcome mat—three of them as a matter of fact. Three wooden signs, over two years in the planning, have been erected at the entrances to the city, one near the golf course, one near the fairgrounds and one near the Willow Creek turnoff.

The three signs, all saying welcome to Heppner, were designed and constructed by Ron Forrar. The wood was donated by Kinzua Heppner Chamber of Commerce, St. Patrick's Committee and the city planning commission donated toward the cost of the signs. Space for placement of the signs was donated by the Willow Creek Country Club, Mrs. Clarence Warren and Fred Hoskins.

One of the signs is painted with shamrocks and trees, one with the Willow Creek Dam and trees, and the other with mountains and trees.

Planning for the signs spanned two Chamber of Commerce presidents, Forrie Burkenbine and Cliff Green, said chamber manager Claudia Hughes.

**LEN'S PROCESSING**  
 Welcomes **CYCLE III**  
**Homemade Pepperoni**  
 Old World Recipe 100% Lean Beef NO Preservatives  
 Come by & see us on Main St. next to Chevron Station.  
 Len & Annie Schwarz 676-5150

Welcome Cycle Oregon III Bikers  
**EVIAN water**  
 We also have:  
 Frozen Yogurt Hard Ice Cream  
 Bagels Donuts  
 Sandwiches Pies  
 Homemade curly fries  
 We make orders to go  
 Serving breakfast daily  
**FULL breakfast menu**  
**SPECIAL BIKERS HOURS**  
 Sun. & Mon. 6 a.m. - 9 p.m.  
**Kate's Pizza & Pastry**  
 Heppner 676-5017

**WELCOME BIKERS**

When you are away from home and need to send a gift to a loved one,

**BLACK HILLS GOLD makes a lovely gift.**

**OPEN Sunday, Sept. 9**

Member Jewellers of America, Inc.  
**Peterson's Jewelers**  
 Heppner 676-9200

**COAST TO COAST** says  
**WELCOME Cyclists**  
 We Invite You To **ENJOY**  
 The Friendly Hospitality of the **GREATEST TOWN** in **OREGON**  
 Stop in and Say Hello

**Coast to Coast**  
 Heppner **We're here to help you.** 676-9961

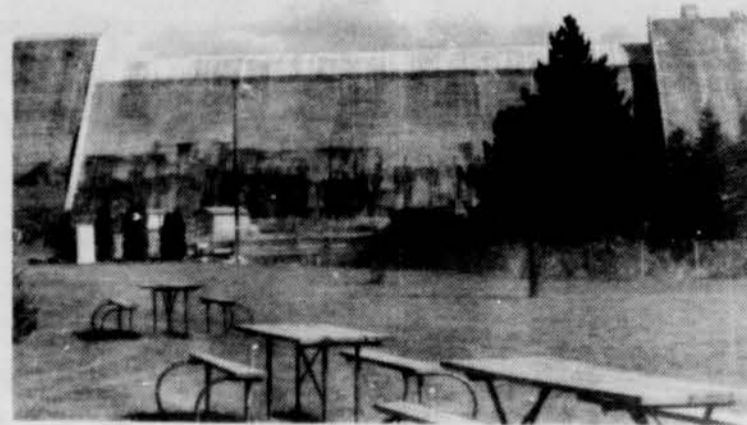
## Willow Creek Dam first roller compacted dam in U.S.

Willow Creek Dam is a flood control project designed to protect the city of Heppner. In 1903, Heppner experienced one of the most devastating floods in the history of the United States. Two hundred forty-seven people perished in the flash flood. The project was designed to prevent a recurrence of a similar disaster. Storage for future irrigation is also part of the project. A lake for water conservation and irrigation will be maintained at an elevation of around 2,000 feet. When a flood occurs, the flood waters are caught and stored, and slowly released until the lake returns to that elevation.

The dam is a concrete gravity structure, 160 feet high from the lowest point in the foundation, and 1,780 feet long at the crest. A gravity dam uses its own weight to withstand the forces of the impounded water and does not have to transfer these forces to the abutments. This

is the most common type of design for concrete dams.

Willow Creek Dam is the first major dam constructed in the United States using the roller compacted concrete (RCC) technique. Much drier than the soupy mixture that is normally seen with concrete pours, RCC concrete is made by quarrying rock in the reservoir area and processing it to materials smaller than three inches. To this is added cement, water and sand. The mixture looks and handles much like damp gravel fill or road base. It was hauled to the dam site in trucks, spread in one-foot layers, and compacted with rolling equipment. Because of the cement in the mix, the mass hardens into concrete with strengths actually exceeding that of conventional mass concrete. Another major advantage is that its costs are one-third those of a conventional mass concrete structure.



Willow Creek Dam

Although RCC has been used in portions of many dams throughout the United States and the world, Willow Creek will be the first dam

in the United States built entirely of RCC. Prior to selecting this construction method, the Corps conducted exhaustive tests to insure that the RCC produced, using the same materials from this site, would have the same strength and performance as standard mass concrete. The tests showed that Willow Creek Dam met all standard design criteria for concrete gravity dams and has safety factors that actually exceed all of the standards.

Construction began in September 1980 with the award of the first relocation contract. The main contract for the dam was awarded to EUCON Corporation in November 1981. The dam was completed in 1983. Estimated total costs of the project, including engineering and design, lands, relocations, roads and other related work were around \$37 million.