

Stay positive in comments to kids

Any fairgoer who spends much time around youth exhibits and contests has probably heard a parent or two explain "My kid really blew it today." Certainly winning and losing are important.

Hard work and perseverance are healthy, but being first at all costs is not.

It is important to encourage youth to give their best effort, but too often parents emphasize only the results. As we approach the fair season, take a moment to consider actions and words. Keep them in relation to what 4-H members are supposed to be learning from the fair experience.

Try one of these expressions to emphasize effort rather than results, suggests Carol Bennett, Morrow County 4-H agent:

* I'm proud of the way you worked today;

* Now that's what I call a fine job;
* You must have been practicing;
* That's the best you have ever done;

* I know you could do it;
* That's quite an improvement;
* You did a lot of work today;
* You certainly did well today;
* You are really learning a lot;
* You outdid yourself today;
* Good for you;
* You did it that time;
* I like that. Marvelous;
* I'm very proud of you;
* Nice going. You remembered.

Keep up the good work;
* Nothing can stop you now;
* That's great. That's good. That's better than ever;
* You are very good at that;
* I'm happy to see you working like that.

* You really worked hard today;
* Well look at you go.

* Terrific. Way to go. Fine;
* Congratulations you got it right. Youth thrive in climate of love. Give 4-H members plenty of praise, warmth and affection when you recognize their effort at fair.

Hatfield to visit Heppner

Senator Mark Hatfield will be in Heppner on Wed., Aug. 22, at St. Patrick's Senior Center. Senator Hatfield's visit will coincide with a Heppner Chamber of Commerce meeting planned at the center that day. The Willow Creek Park District will also make a presentation. The public is invited to attend.

Ione high class reunion Sept. 2

Plans are being made for a reunion of Ione High School students including all classes up to 1940. The reunion will be held on Sept. 2 at the school cafeteria with registration to begin at 10 a.m. and dinner at 1 p.m.

All students attending school during those years and any other interested parties are invited to attend.

Former students and guests are asked to reply to Dot Halvorsen by August 20 if they plan to attend.

Committee members working on the plans are Helen Crawford, Dot Halvorsen, Geneva Palmer, Lucile Reitmann, Mildred Morgan, Margaret Morgan, Margaret Akers, Ruth McCabe and Katherine Lindstrom.

4-H News

Ewes R Us By Jenny Krein, Reporter

The Ewes R Us sheep club met at the fairgrounds July 17 at 6:30 p.m. Shelly Ashbeck gave a presentation on shearing and tagging lambs. Amy Greenup gave one on making halters. Sara Greenup did a presentation on shelter and equipment needed to have a lamb and Jenny Krein gave one on disease and parasite control.

Members sheared their lambs on July 31 at the fairgrounds. Once all the lambs are shorn members were to have a showmanship workday and to bring a lunch.

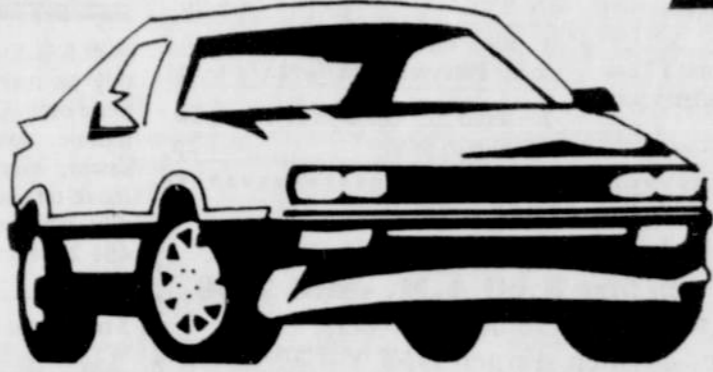
During the meeting members talked about and worked on records which are due Sept. 21. Members also were reminded to go to the fairgrounds cleanup which was Aug. 4.

Beef Ambassador make presentation

Beef Ambassador Presentation competition will be held on Thursday, Aug. 16 at 5 p.m. The new contest will incorporate general presentation guidelines with an illustrated talk on the promotional aspects of beef. This presentation is to highlight the nutritional and economic values of beef and cooking principles of beef, but is not a cooking demonstration.

According to 4-H agent Carol Bennett, Morrow County is a pilot county for the contest in Oregon. Beef Ambassador Presentation is a national 4-H Program. "We hope the Morrow County competition will encourage other counties to incorporate this contest in their fair schedule." Tami Rietmann, Oregon CattleWomen Chair for Beef Ambassador, says she hopes "it will be a state fair competition in the future."

Plan to observe the Beef Ambassador and other presentations Thursday, August 16.



RED HOT for Summer Travel



ALL SEASON RADIAL RETREADS

* High quality inspection procedures and workmanship with pride make this all season radial an excellent value for your money-plus, we warranty them like our new tires.

SIZE	PRICE	SIZE	PRICE
155R-13	17.99	P195/75R-15	30.48
165R-13	18.99	P205/75-15	30.73
P175/80R-13	22.40	P215/75R-15	35.39
P185/80R-13	24.04	P225/75R-15	36.10
P185/75R-14	25.64	P235/75R-15	37.39
P195/75R-14	27.97	P175/70R-13	18.99
P205/75R-14	30.16	P185/70R-13	23.14
P215/75R-14	31.43	P185/70R-14	26.39
P225/75R-14	32.05	P195/70R-14	28.86

LOW COST WHITEWALL STEEL RADIALS

* The Galaxie GT is built with tough double steel belts for comfort, stability and protection at an excellent price.

P155/80R-13	\$27.66
P165/80R-13	\$29.57
P175/80R-13	\$30.41
P185/80R-13	\$31.92
P185/75R-14	\$33.86
P195/75R-14	\$34.66
P205/75R-14	\$35.84
P215/75R-14	\$38.73
P205/75R-15	\$37.42
P215/75R-15	\$38.94
P225/75R-15	\$41.24
P235/75R-15	\$43.21

INTRODUCING MEGA IV



Our All New, All Season Radial. Featuring an advanced Computer designed tread and Quality Performance.

Introductory Priced Now!

P155/80R-13	45.78	P205/75R-14	60.74
P165/80R-13	48.79	P215/75R-14	64.13
P175/80R-13	50.79	P205/75R-15	62.46
P185/80R-13	52.90	P215/75R-15	65.31
P185/75R-14	56.70	P225/75R-15	68.71
P195/75R-14	57.48	P235/75R-15	73.03

Small Car All Seasons Radials

155SR-12	\$33.47
155SR-13	\$36.11
165SR-13	\$38.62
185SR-14	\$47.15
165SR-15	\$43.18
175/70HR-13	\$45.04
185/70HR-13	\$47.59
185/70HR-14	\$49.26
195/70HR-14	\$52.30
205/70HR-14	\$55.87

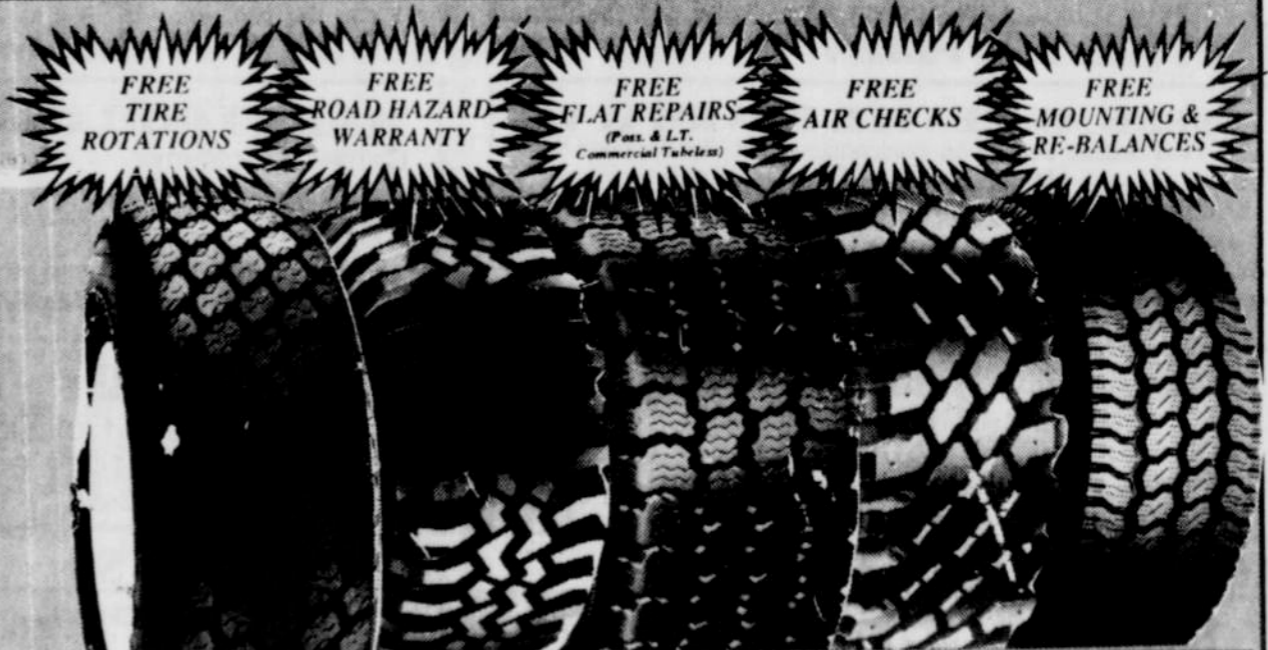


P155/80R-13 \$45.78

Alpha IV
All Season Steel Radial
Ready for the street, this all season tire provides smooth quality driving in all types of weather.

P155/80R-13	\$36.88
P165/80R-13	\$39.46
P175/80R-13	\$40.56
P185/80R-13	\$42.58
P185/75R-14	\$45.17
P195/75R-14	\$46.22
P205/75R-14	\$47.82
P215/75R-14	\$51.66
P205/75R-15	\$49.90
P215/75R-15	\$51.97
P225/75R-15	\$55.02
P235/75R-15	\$57.65

HEPPNER
676-9481



WILD COUNTRY All Position Radial OWL P195/75R-14 \$63.55	WILD COUNTRY Traction Radial OWL LT215/75R-15 \$93.54	WILD CAT All Seasons P195/75R-14 \$61.54	WILD CAT Traction Radial OWL LT215/75-15 \$91.40	TOYO Open Country All Seasons LT215/75R-15 \$94.70
P195/75R-14 63.55	LT215/75R-15 93.54	P105/75R-14 61.54	LT215/75R-15/6 91.40	LT215/75R-15/6 94.70
P205/75R-15 69.29	LT235/75R-15 101.34	P205/75R-15 66.44	LT235/75R-15/6 96.14	LT235/75R-15/6 103.99
P215/75R-15 73.19	27/8.50R-14 103.46	P215/75R-15 69.09	30/950R-15/6 97.73	30/950R-15/6 110.74
P235/75R-15 80.41	30/9.50R-15 101.55	P235/75R-15 76.72	31/1050R-15/6 109.06	31/1050R-15/6 124.60
27/8.50R-14 83.55	31/10.50R-15 110.44	27/850R-14/6 82.29	31/1150R-15/6 115.56	31/1150R-15/6 133.65
30/9.50R-15 106.76	31/11.50R-15 121.60	30/950R-15/6 95.66	33/1250R-15/6 126.08 +FET
31/11.50R-15 125.28	31/11.50R-15 121.60	31/1150R-15/6 106.76 +FET +FET
33/12.50R-15 135.89	33/12.50R-15 134.90	31/1150R-15/6 113.13		
LT215/85R-16 103.04	30/9.50R-16.5 106.27	33/1250R-15/6 123.41		
LT225/75R-16 103.62	33/12.50R-16.5 142.08 +FET		
LT235/85R-16 120.76 +FET			