

Daly honored by OSU



Charlie Daly is honored by Extension for 40 years of support. Presenting him the award is (R) Dr. John Byrne, president of Oregon State University.

Charlie Daly, rancher on Little Butter Creek, was honored as Extension Service Cooperator of the Year recently in Corvallis. He was one of four recipients of the award in Oregon in 1988.

Mr. Daly traveled with his wife, Yvonne, to Oregon State University to receive the award at the annual Extension Service Awards Banquet.

He was honored for over forty years of support for the Extension Service and 4-H programs in Morrow County, including over fifteen years as organizer and leader of one of the first 4-H horse clubs in Oregon.

He has been a member of the Morrow County Extension Service advisory board for over twenty years and is past chairman.

Charlie has also served on the Fair Board, both as a member and as a chairman, and is a strong supporter of the fair and rodeo. He has also been a staunch supporter of the Pendleton Roundup.

He is past president of Morrow County Livestock Growers and has been active in the state livestock association.



Morrow County has gross farm sales totaling over \$95 million in 1988, up over two million dollars from the year before. Crops sales for 1988 were \$60.8 million, down slightly from the year before, while livestock sales were \$34.4 million, up nearly three million dollars.

Total farm sales have been climbing for three straight years, but have not equaled the sales of the early 1980's. In 1984, total sales peaked at \$107 million, and total crops sales were \$77 million.

Wheat sales in 1988 were \$21.5 million and potato sales \$25 million. Wheat acreage was down five thousand acres from 1987 to 108,600 acres from 1987 and of 84 thousand acres from 1986. That represents a reduction of 40 percent of the acres seeded to small grains over the past two years.

Potato production was down slightly in 1988, but prices were slightly higher. This resulted in little change in farm sales.

Alfalfa hay production was down one-third to 19 thousand acres from thirty thousand in 1987, resulting in farm sales of alfalfa of \$4.8 million down from \$7.9 million in 1987.

Cattle sales were \$32.4 million, up from \$29.4 million in 1987. Pork, sheep, dairy and other livestock sales were two million dollars, for a total of \$34.4 million.

Grapes became an economic factor in Morrow County in 1988 with 810 acres harvested averaging three tons yield per acre. The grape sales total \$1.65 million, up threefold from 1987.

Data on farm sales are estimates, and are available on request at the Morrow County office of the OSU Extension Service 676-9642.

BANK OF EASTERN OREGON
Heppner Branch

OPEN HOUSE

- ★ Monday, December 19th
- ★ Coffee, Cookies & Punch Served
- ★ Door Prize - Sign Up To Win A \$50.00 Christmas Club Account

"Join Us For This Day Of Appreciation For Letting Us Serve Your Banking Needs"

BANK OF Eastern Oregon

"Your Money Helping Your Neighbors"

MEMBER F.D.I.C.

GOOD GIFT IDEAS!!
GREAT BUYS!!

50% off

All Remaining Housewares in Stock Through Dec. 23rd.



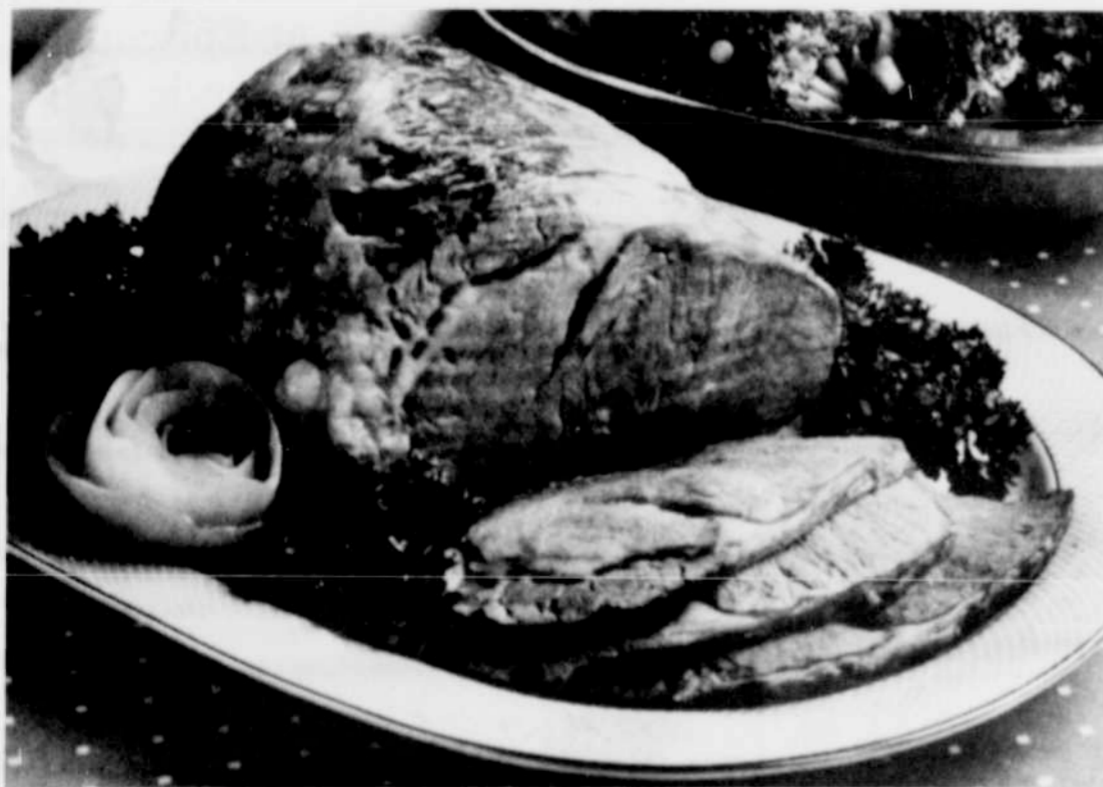
(Would Make Great Stocking Stuffers!)

Santa's Shopping List
10% off ALL Key Clothing
10% off ALL Footwear
10% off ALL tools

Morrow County Grain Growers

1-800-452-7396 350 Main
Lexington, Oregon 989-8221

How To Handle The Holiday Crowds.



Whether your holiday crowd is 6 or 16, a nutritious, succulent beef roast fits the bill. Follow the instructions below to keep your crowd coming back for more.

PREPARATION FOR BEEF ROASTS

1. Season if desired.
2. Place roast on rack in open pan.
3. Insert meat thermometer.
4. Do not add water.
5. Do not cover.

Cut	Approximate Weight	Oven Temp.	Final* Meat Thermometer Reading	Approximate** Total Cooking Time (Min. per lb.)
RIB (small end)	8 to 10#	325°F	160°F (rare) 180°F (medium)	19 to 21 23 to 25
TOP ROUND	6 to 10#	325°F	160°F (rare) 180°F (medium) 190°F (well)	17 to 19 22 to 24 26 to 28
ROUND TIP	5 to 10#	325°F	160°F (rare) 180°F (medium) 190°F (well)	18 to 22 21 to 25 25 to 28
RIB EYE (small end)	3 to 8#	300°F	160°F (rare) 180°F (medium) 190°F (well)	13 to 15 16 to 18 19 to 21
TENDERLOIN	4 to 6#	425°F	160°F (rare)	45 to 60 (Total)

*Roast to 10°F below desired degree of doneness.
**Roast on meat taken directly from refrigerator.

OREGON BEEF COUNCIL

1000 NE Multnomah, Portland, OR 97232 (503) 281-3831

For beef recipes and other holiday serving ideas, write or call the Oregon Beef Council.

Garden Bugs sponsor lighting contest

The Lexington Garden Bugs and the City of Lexington are co-sponsoring an outdoor Lighting contest. Judging will occur on Wednesday, December 21.

Help continue Lexington's

Hometown Christmas Celebration and decorate your place in the holiday spirit.

All Lexington residents may participate. Judges will be from out-of-town. Cash prizes will be \$50, first; \$25 second; and \$10 third.

W.C. Parks project coming along

The day park has been completed at the Willow Creek Dam, thanks to businesses and individuals that donated time and materials.

A new member has recently been elected to serve on the park board. Meg Murray will be working on the lease process with the corps, among other things. The processing of grants is a full-time job and the board is earnestly working on the time frame that projects will be started in

1989 and hopefully finished in 1990. According to park board member Ken Turner, the board anticipates maintaining the high level pool for recreation, stream flow and fishing.

"The corps is in the process of reviewing the final pool level. The level is based on many factors, public support is positive for high level and the park board intends to see it made permanent," says Turner.

First Christian Church holds Christmas program Dec. 25

The First Christian Church Sunday School children have been working on their Christmas program the past few weeks. The program will be Sunday, December 25 at 10:30

a.m. at the First Christian Church in Heppner. Songs, poems and the nativity scene are all part of the program. The public is invited to attend.

MERRY CHRISTMAS

SUNDAY ONLY SALE *Open Sunday 12 - 4 p.m.*

All Slippers 1/2 price
All Purses 25% off
Lots of Sweatshirts in stock

HEPPNER
143 N. MAIN
676-5241

BUCKNUM'S

Now Serving LUNCH SPECIALS

THURS. Wierd Weenies w/fries \$2.00	FRIDAY Tacos \$1.50	MONDAY Chiliburger \$3.00
TUESDAY Patty Melt w/fries \$2.50	WEDNESDAY Sloppy Joes \$2.75	

"More than just a tavern"
BUCKNUM'S TAVERN



'TIS THE SEASON TO SAY I LOVE YOU WITH JEWELRY.

The holidays are the perfect time to express your feelings with a gift of fine jewelry.

And because fine jewelry is a gift whose beauty lasts forever, they'll remember how much you care long after the holidays are over.

Fine Jewelry. When your feelings are for real.

Open Sunday 12 - 4 p.m.

Peterson's Jewellers

Heppner 674-9200

Member Jewelers of America, Inc.

JACKIE'S, I'LL SHOP FOR YOU!

"If you can't get out to do your grocery or Christmas shopping, let me do it for you!"

"I'll shop for all your needs: Weddings, showers, birthdays, anniversaries, or Christmas. Payment required upon delivery."

"If it can't be found locally, I'll try to find it somewhere else for you."

"ATTENTION MEN and those of you who can't get out to shop, let me do it for you!"
Call 422-7457 and I'll Shop For You