



2000 FREE Labels from Family Grocer

For Schools Participating in the Campbell's Labels for Education Program
2000 FREE LABELS

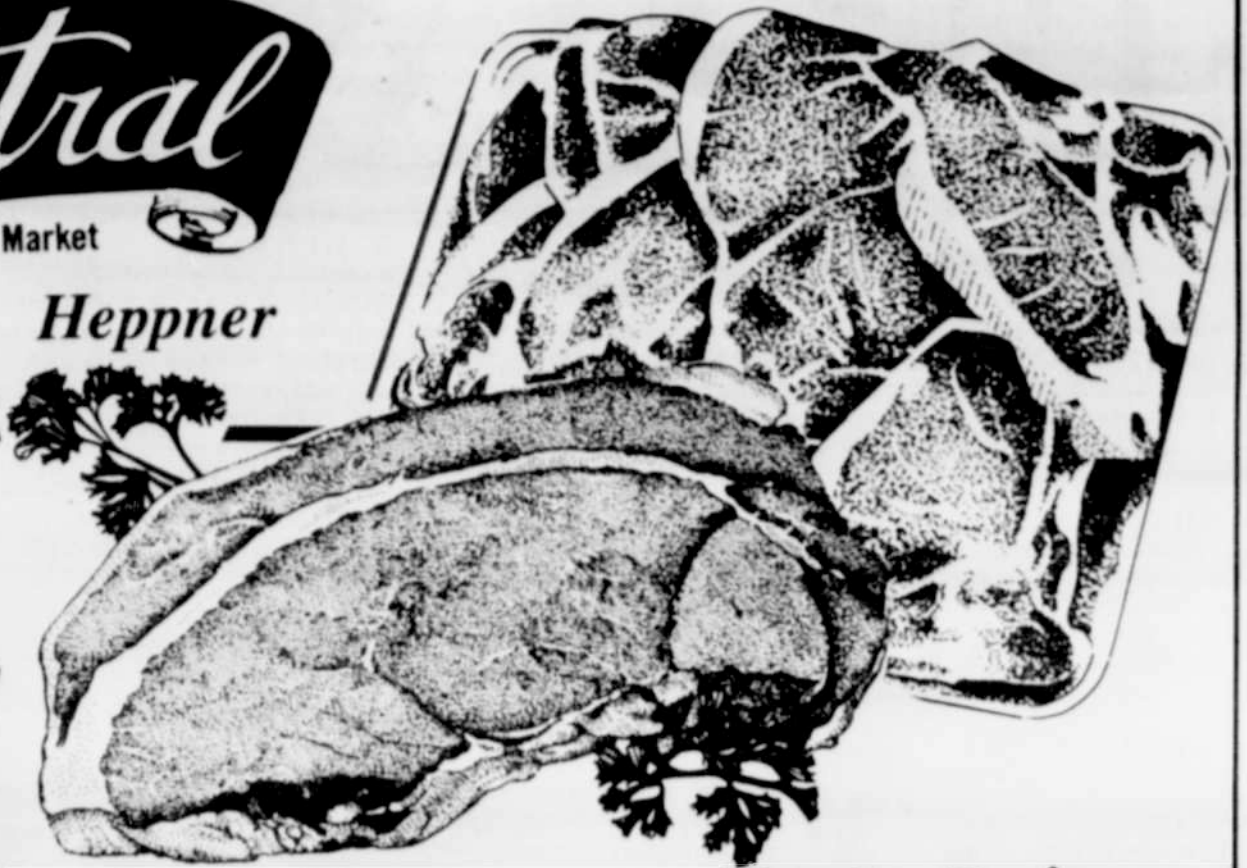
Fill out this form and take it to your participating Family Grocer "The Labels for Education Program."

School Name _____
Address _____
City _____ State _____ Zip _____
Phone _____ Date _____

Offer Expires 2/13/88. Limit 1 Offer per School.



Main St. Heppner



Beef Top Round Steak
Boneless, USDA Choice

Pork Loin Quarter
Sliced Chops & Steaks

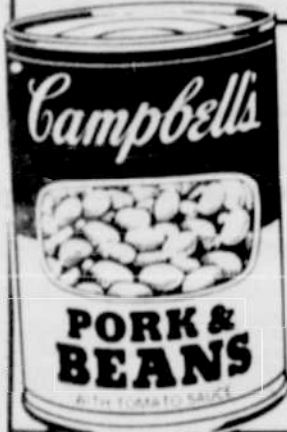


Campbell's
Tomato Juice
46 oz. ea. **.99**



Campbell's
Chunky Beef & Sirloin 1.29
19 oz. ea.
Chunky Chicken & Chicken Noodle 1.19
19 oz. ea.

Campbell's Home Cooking 10.75 oz. .49
Campbell's Noodle w/Chicken Broth 4.7 oz. .79



Pork & Beans
16 oz. Ea. **2.99**



Kraft 16 oz.
Cheese Slices 2.59
Ea.



Kraft 16 oz. Assorted
Salad Dressings 1.99



Fleishman's - 1 lb. cube
Margarine .99
Ea.



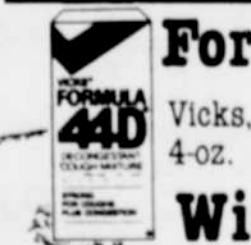
Pepsi
Half Case
Asst., 12-Oz. Cans **3.89**
Plus Deposit

Sunlight 80 oz.
Liquid Detergent 2.99
Ea.

Sunlight 65 oz.
Dishwasher Powder 2.99
Ea.

Orville Redenbacher 10.5 oz.
Microwave Popcorn 1.99
Ea.

30 count - 13 gallon
Glad Bags 2.59
Ea.



Formula 44D
Vicks, 4-oz. 2.88
Wild Bird Food 1.44
Northwood Farms, 10-Lb. Bag

Lb. **2.99**

Lamb Shoulder Blade Steaks 1.99
Lb.

Sausage 1.99
Smoked, Sugar River, Assorted Varieties Lb.

Beef Roast 1.99
Rump or Bottom Round, Boneless, USDA Choice Lb.

— **Seafood** —

Steamer Clams 1.48
Fresh Lb.

Clam Strips 2.28
Breaded (Previously Frozen) Lb.

Smoked Salmon 4.88
Pure Alaskan Fillet Lb.



Lb. **1.99**

Boneless Turkey 1.49
Norbest Frozen, 3 to 7-Lb. Average Lb.

PIONEER

Sizzlean Bacon 1.49
Assorted Varieties, 12-Oz.

Chicken Strips & Nuggets 2.19
Maple Leaf, 12-Oz. Ea.

Reser's Burritos .33
Assorted Varieties, 5-Oz. Ea.



Red Delicious Apples 4.19
Extra Fancy, Wash. Grown Lbs.

Cherry Tomatoes .68
A Salad Favorite Pint

Red or Green Cabbage .28
Firm, Great Salad Substitute Lb.

Sweet Corn 3.19
Tender Ears For Large Stuffing Size

Avocados .48
Hass, Vitamin Rich Ea.

Lemons 4.88
Choice California For

Ham or Turkey 2.99
Danola Sliced 12 oz. Pkg. Ea.



Banquet Chicken 2.88
32 oz. Assorted Ea.

| | | | | | | |
|----|----|----|----|----|----|----|
| SU | M | TU | W | TH | F | SA |
| | | | 13 | 14 | 15 | 16 |
| 17 | 18 | 19 | | | | |

Prices Effective January

We Reserve the Right to Limit Quantities

COPYRIGHT 1988 ASSOCIATED GROCERS, INC. SEATTLE



Monday - Saturday 8 a.m. to 7 p.m.
Sunday 10 a.m. to 5 p.m.

Large Selection
Low Prices
Friendly Service