

# Girl Cardinals fly to easy win

The return from Christmas vacation saw the lone girl Cardinals fly to an easy win over the Spray Eagles, 37-21.

Ione outscored Spray in three quarters shutting them out in two. Coach Jocelyn Jones says her girls 29 percent field goal shooting wasn't as good as expected but, they made up for it in defensive play.

Hams had 12 boards and Angie Rudisill 8 boards combined for 20 of Ione's 34 rebounds.

Ione - D. Hams 8-0-16, C. Rudisill 2-6-10, P. McElligott 2-1-3-5, K. Davison 1-0-1-2, A. Rudisill 1-0-0-2, M. Papineau 0-1-2-1, J. Nelson 1-0-0-2, K. Anderson, K. Doherty. Total 15-8-18-37.

Spray 0-9-12-0-21

Ione 6-20-7-4-37

Fouled out - D. Rardin, L. Rardin.

Total fouls - Spray 19, Ione 12.

## Ione girls 4-4 in non-league play

The Cardinal girls made it 4-4 in non-league play with their win over the Long Creek Mountainers.

Ione's all freshmen bench started the game and played much of the first and fourth quarters. Coach Jocelyn Jones was glad to see her team's field goal percentage improve from Friday's game.

The Cardinals will face Arlington Friday night there at 6 p.m. in the first Big Sky Conference opener for both.

Ione - D. Hams 6-0-0-12, P. McElligott 3-2-6-8, C. Rudisill 3-0-1-6, S. Wright 1-2-3-4, J. Nelson 1-0-0-2, M. Papineau 1-0-0-2, A. Rudisill, K. Davison, K. Anderson, K. Doherty. Totals 15-4-11-34.

Long Creek 13-2-2-10-27

Ione 10-9-7-8-34

Fouled out - none. Total fouls - Long Creek 15, Ione 29.

## Special interest classes offered

Special interest classes in astronomy with a focus on Halley's comet, cross country skiing, private pilot ground school, woodburning, and beginning guitar are among the classes offered locally by Blue Mountain Community College this winter.

Many classes are already starting, says BMCC coordinator Marie Lane, but it's not too late to register for most classes. For more information, call 676-5039.

## Health Dept.

Friday, Jan. 10 - immunizations and blood pressure clinic, Health Dept. office, Lexington, 9 a.m. - noon, 1-4 p.m.

Tuesday, Jan. 14 - blood pressure clinic and immunizations, 1-4 p.m., Irrigon county offices.

Wednesday, Jan. 15 - Blood pressure clinic, Ione Bank of Eastern Oregon kitchen, 3-4 p.m.

Friday, Jan. 17 - immunizations and blood pressure clinic, Health Dept. Office, Lexington, 9 a.m. - noon, 1-4 p.m.

Tuesday, Jan. 21 - immunizations and blood pressure clinic, 1:30 - 4 p.m., Boardman City Hall.

Friday, Jan. 24 - immunizations and blood pressure clinic, 9 a.m. - noon and 1-4 p.m., Health Dept. Office, Lexington.

Tuesday, Jan. 28 - immunizations and blood pressure clinic, Irrigon County Offices, 1-4 p.m.

Friday, Dec. 31 - immunizations and blood pressure clinic, 9 a.m. - noon and 1-4 p.m., Health Dept. Office, Lexington.

## Adopt-A-Pet

Pioneer Humane Society, 676-5169, has the following animals available for adoption:

1 1/2 year old lovable black female poodle-type dog.

Female Border Collie mix, excellent pet.

Two German Shorthair: 10-year-old female, 4-year-old male, both excellent hunters and family pets.

Two male terrier cross black pups.



Ants can be frozen for long periods without harm. Many spend the winter inside logs and stumps, coated with ice crystals.

## Tarps

Cover Trucks,



Boats, Wood piles  
Contact  
M.C.G.G.

For Your Tarp Needs  
989-8221



No. 10 Patty McElligott dribbles down court



No. 14 Angie Rudisill jumps for two

## ★ TIRES ★ LUBE & OIL ★ MECHANICAL WORK

Stop by and see,  
or call Vic Klinger



**Chevron Vic's**  
**Lexington Chevron**  
989-8575 Lexington

## NEW TRADE INS ALL VERY NICE!!

Don't Wait!  
They're Going Fast

1978 Impala

Showing now,  
Less than 31,000 miles.

LOOKS  
GOOD!

1981 Bronco XLT

Local owner, Lots of miles  
but very nice rig.

WOW!

1982 1/2 Ton Chev.

2x, 40,000 miles.

TOP  
SHAPE!

Hon  
McDonald 676-9108

**CHEVROLET**

117 S Main Inc.

## ORDER NOW "100 Years of Valby Lutheran Church"

We need orders by January 20.  
The book will be ready by April 13.  
for \$28 a piece

Molly Rill  
676-5455 (evenings)

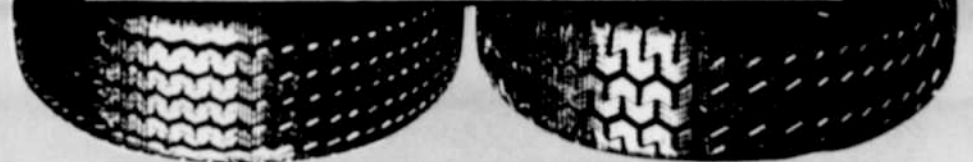
Contact:

Don Peterson  
422-7136

**WE ARE BACK**  
in the  
Rinse & Vac Business  
1 New Machine  
1 Reconditioned  
Machine  
We can help you  
**Coast to Coast**



**MICHELIN**  
BECAUSE SO MUCH IS RIDING ON YOUR TIRES.



**MICHELIN X**

Specialty engineered for American cars and highways, this quiet-running radial tire is designed to provide a smooth ride, long tread mileage, responsive handling, excellent traction and proven fuel economy over bias-ply tires.

205/75R-14 \$82<sup>00</sup>

215/75R-14 \$85<sup>47</sup>

225/75R-14 \$88<sup>30</sup>

225/75R-15 \$90<sup>38</sup>

**MICHELIN XCA**  
EXCELLENT ROAD GRIP,  
WIDE TREAD, LONG TREAD  
MILEAGE, MEASURABLE FUEL  
ECONOMY



700R15 6 ply \$94<sup>25</sup>

700R15 8 ply \$103<sup>55</sup>

7.50R16 8 ply \$122<sup>72</sup>

Special Factory Purchase

215/85R16 6 ply \$85<sup>00</sup>

**MICHELIN XAG**  
FREE  
MOUNTING

185/70R-14 \$76<sup>34</sup>

195/70R-14 \$84<sup>42</sup>

195/75R-14 \$84<sup>42</sup>

215/75R-14 \$95<sup>99</sup>

225/75R-15 \$99<sup>18</sup>

165/70R-13 MxL \$48<sup>92</sup>

165/SR-13 x2x \$54<sup>44</sup>

205/70R-14 x24 \$86<sup>19</sup>

215/75R-15 xH \$82<sup>27</sup>

235/75R-15 xH \$89<sup>34</sup>

## SPIN BALANCE AVAILABLE

10.00 R20 14 ply \$289<sup>48</sup>

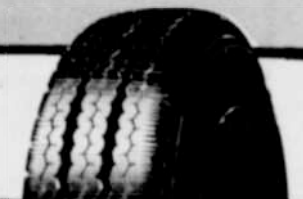
11 R 22.5 14 ply \$324<sup>91</sup> 24.76

10.00 R 22 12 ply \$310<sup>77</sup> 29.11

10.00 R 22 14 ply \$324<sup>30</sup> 30.52

11 R 24.5 14 ply \$348<sup>35</sup> 30.88

F.E.T.  
24.79



**MICHELIN XZA**

An all-wheel position tire designed to meet today's trucking needs for improved handling, traction, long mileage, reduced tire noise and measurable fuel economy over bias-ply tires.



**MICHELIN XZY**

An all-wheel position tire designed for use on highways, as well as in off-road job sites. It provides traction on gravel and loose soil surfaces and it can withstand hauls at highway speeds for moderate distances.

10.00 R 20 14 ply \$312<sup>45</sup> 27.44

11 R 24.5 14 ply \$373<sup>02</sup> 33.78

11 R 24.5 16 ply \$383<sup>01</sup> 34.95

F.E.T.  
27.44

While Supply Lasts:

FREE MICHELIN CAP  
with purchase of 2 or more  
Michelin Tires.



**MORROW COUNTY  
GRAIN GROWERS**

Phone - 989-8221 1-800-452-7396

★ FERTILIZER ★ AUTOMOTIVE ★ CHEMICAL ★ MACHINERY