

## DIVISION 2 — CAVIES (GUINEA PIGS)

CLASS A — ABYSSINIAN  
 CLASS B — AMERICAN  
 CLASS C — PERUVIAN  
 CLASS D — CRESTED  
 CLASS E — OTHER  
 LOT

1. Junior boar - under six months
2. Senior Boar - over six months
3. Junior sow - under six months
4. Senior sow - over six months

## DIVISION 3 — RABBITS

CLASS A — HEAVY WEIGHT - California, New Zealand, etc.  
 LOT

1. Senior Buck - over eight months
2. Senior Doe - over eight months
3. Int. Buck - six to eight months
4. Int. Doe - six to eight months
5. Jr. Buck - under six months
6. Jr. Doe - under six months
7. Doe and litter of same breed, over two weeks (\$5, \$4, \$3)

CLASS B — LIGHT WEIGHT - Dutch, Polish, Dwarf Netherland  
 LOT

1. Jr. Buck - under six months
2. Jr. Doe - under six months
3. Sr. Buck - over six months
4. Sr. Doe - over six months
5. Doe and litter of same breed over two weeks (\$5, \$4, \$2)

CLASS C — FUR ANIMALS - Angora, Satin, etc.  
 LOT

1. Jr. Buck - under six months
2. Jr. Doe - under six months
3. Sr. Buck - over six months
4. Sr. Doe - over six months
5. Doe and litter of same breed over two weeks (\$5, \$4, \$3)
6. Pen of three market rabbits (\$5, \$4, \$3)
  - a. Fryer - weights 10½ lbs. to 15 lbs., under 69 days
  - b. Roaster - weights 13½ lbs. to 22½ lbs., under 90 days

# DEPT. IV. SADDLE HORSE SHOW

MORROW COUNTY OPEN HORSE SHOW  
 Sponsored by the WRANGLERS RIDING CLUB  
 SUNDAY, AUGUST 11, 1985 8:30 A.M.

Judge: Duane Fulps, Mosier, Oregon  
 Secretary: Janelle Bailey

Secretary will be at the Dorm Building from 10 a.m. - 5 p.m. August 3, 1985 for your convenience.

Morrow Co. Class Entry Fee: None	Open Class Entry Fee: \$3
Morrow Co. Working Cow Horse Class: \$5	Late Entry Fee: \$3 flat fee
Morrow Co. Entries close Sat., Aug. 3	Open Class Entries close 10:30 a.m. Sat., Aug. 11, 1985

Photographer Available

LOT A: Halter — Morrow County Horses Only

1. One and two year old geldings
2. Three and four year old geldings
3. Five year and older geldings

**Champion and Reserve Champion Geldings** (from classes 1, 2, and 3)

4. Ponies up to 50"
5. Ponies up to 56"
6. Five year and older mares
7. Three and four year old mares
8. One and two year old fillies
9. Broodmares (must have had foal within last two years. No cross entry with classes 6 and 7.)

10. 1985 Fillies

**Champion and Reserve Champion Mares** (from classes 6-10)

11. Mare and nursing foal
12. Produce of Dam (Two or more. Do not have to be owned by one exhibitor. Mare does not have to be shown. State name of Dam on entry form.)
13. Get of Sire (Two or more. Sire need not be exhibited. All horses do not have to be owned by same exhibitor.)
14. 1985 Colts
15. One year and older stallions (To be lined up according to age.)

**Champion and Reserve Champion Stallion**

LOT B: PERFORMANCE

MC denotes classes open to Morrow County Horses Only  
 OPEN denotes classes open to Morrow Co. Horses and Horses from other counties  
 (X) denotes Senior Performance Horse Point Classes for Morrow Co. Horses  
 (+) denotes Junior Performance Horse Point Classes for Morrow Co. Horses  
 — To be eligible for Sr. Performance Horse, contestant must show in at least three of the four designated Sr. Performance Horse classes.

## Ekstrom Farm Chemicals

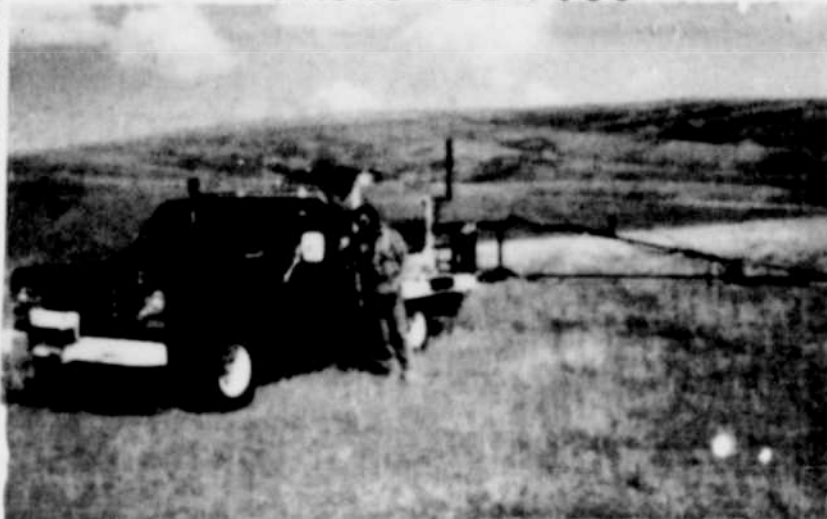
Anhy. Ammonia    Aqua Ammonia  
 Nitra-sul

Sulfur & all Trace Elements

Soil Testing



Phone 422-7505



FOR ALL YOUR FERTILIZER AND SPRAYING NEEDS

★ ★ ★ ★ Windows ★ ★ ★ ★

**Glass, Insulation Lumber, Paneling,**

**POLARIS**  
*Accept no substitutes.*

Authorized Arctic Cat  
 Snowmobile Dealers

**LEXINGTON LUMBER**  
 Lexington, Ore. 989-8586  
 GENE, DONA & DUANE

## Lexington Machine Works

**Complete Machine Shop Service!**

*Can Help Solve Maintenance Problems!*

*Experienced in Farm Maintenance*

*Precision Work      Call & Ask!      Fast Service*

- DRIVELINES    • HAY CONDITIONER ROLL REBUILT    • FLYWHEELS FACED
- DISC & DRILL AXLES    • BEARING JOURNALS SPRAYED & TURNED
- SPINDLES    • DISCONTINUED MACHINERY PARTS    • SHAFTS & AXLES
- WEEDER WHEELS & AXLES    • KEYWAYS CUT OR BROACHED
- HEADER AUGERS STRAIGHTENED, CENTERS REPLACED

405 W. Main Street    Lexington, OR 97839    Phone: 989-8505  
 (Across from Morrow County Grain Growers)    After Hours: 989-8132