



# Celebrate Memorial Day With Savings

PRICES EFFECTIVE MAY 23 THRU MAY 26, 1985

## FRESH PRODUCE

### WATERMELON

RED, RIPE



WHOLE LB. **29¢**

### SWEET CORN

CALIFORNIA

NEW CROP



**4 \$1**  
FOR

### POTATOES

WHITE SHAFTER



THE SALAD POTATO **5 \$1**  
LBS.

**RADISHES** OR GREEN ONIONS. . . . . **4 \$1**

**APPLES** DELICIOUS C.A. EX-FANCY, GOLDEN CELLO 3-LB Bag . . . . . **79¢**

**GRAPEFRUIT** JUMBO SIZE PINK . . . . . **39¢**

## QUALITY FRESH MEAT

### FRESH WHOLE FRYERS

WASHINGTON GROWN



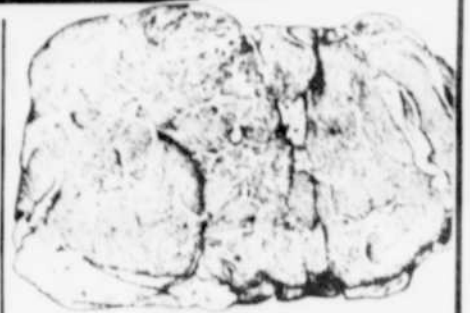
LB. **69¢**

### WHOLE SMOKED HAM

MAPLE RIVER 5-7 LB. AVG. W/A



LB. **\$1.29**



### BEEF

### CHUCK STEAK

USDA CHOICE BONELESS

LB. **\$1.59**

### 100% BEEF LEAN GROUND BEEF

LB. **\$1.39**

FRESH WASHINGTON FRYER HINDQUARTER . . . . . **69¢**  
LENNON LINK REG. OR ITALIAN **\$1.59**  
PORK SAUSAGE . . . . . **1.59**  
WILSON 93% LEAN **\$2.89**  
HALF HAM REG. OR HONEY . . . . . **2.89**  
LENNON ALDER SMOKED **\$2.89**  
MINI HAM BONELESS. . . . . **1.99**  
JIMMY DEAN 3 VAR. 12 OZ. **\$1.99**  
PORK SAUSAGE 12 OZ. ROLL . . . . . **1.99**

HILLSHIRE 4 VAR. ROPE SAUSAGE . . . . . **\$2.59**  
FARMLAND REG. OR THICK SLICED BACON . . . . . **\$1.79**  
HYGRADE MEAT OR BEEF BALL PARK FRANKS . . . . . **\$1.79**  
HILLS PICNIC HAMS . . . . . **.79¢**  
JOHN MORRELL SLICED LUNCHEAT . . . . . 1LB. PKG. **\$1.39**

### POTATO CHIPS

LAYS 7-7.5-OZ. ASSTD.



**89¢**

### PORK & BEANS

VAN CAMPS 31-OZ.



**67¢**

### DILL PICKLES

FARMAN'S 46-OZ. GENUINE, KOSHER OR GARLIC



**\$1.39**

### BRIQUETS

KINGSFORD, 10 LB.



**\$2.89**

WESTERN FAMILY RIPE OLIVES 6-OZ. LARGE PITTED . . . . . **89¢**

WIZARD CHARCOAL LIGHTER FLUID 32 OZ. . . . . **\$1.59**

## GROCERY VALUES

**Tony's** PIZZA 12-OZ CANS, 6-PACK & PEPSI EA. **\$1.89**  
KRAFT ASSTD. REGULAR STYLE BBQ SAUCE 18-OZ. . . . . **99¢**  
NALLEY ASSTD. 15-OZ. CHILI W/BEANS . . . . . **79¢**  
MAXWELL HOUSE COFFEE 3 LB. . . . . **\$6.99**  
MAXWELL HOUSE, 8-OZ. INSTANT COFFEE . . . . . **\$4.19**  
C&H CANE SUGAR 10 LB. . . . . **\$2.98**  
WESTERN FAMILY 12-OZ. SEA SHELLS OR SALAD MACARONI. . . . . **59¢**  
DIXIE GOLDEN GARDEN PLATES 48/9 INCH 24/10.5 INCH . . . . . **\$1.89**  
DIXIE GOLDEN GARDEN COLD CUPS 100/7-OZ. . . . . **\$1.79**  
KRAFT, JET PUFF MARSHMALLOWS 10-OZ. **49¢**

## BEVERAGE BUYS

BUDWEISER 12 PK./12-OZ. CANS REG. OR LIGHT BEER **\$5.49**  
OREGON LOTTERY TICKETS  
COKE PRODUCTS 6 PK./12-OZ. CANS . . . . . **\$1.89**

## BAKERY SPECIALS

### FRENCH BREAD

WESTERN FAMILY SLICED, 16-OZ. **89¢**

WESTERN FAMILY HOT DOG OR HAMBURGER BBQ BUNS 8 CT. **49¢**

## DAIRY - DELI

### ICE CREAM

SPARKLE ASSTD. HALF GALLON **99¢**

### MARGARINE

TABLE MAID LB. **49¢**

DARIGOLD 1 LB. BUTTER GRADE AA . . . . . **\$1.95**

DARIGOLD, PINT WHIPPING CREAM . . . . . **89¢**

## FROZEN FOODS

### LEMONADE

WESTERN FAMILY 12-OZ. REG., PINK OR LIMEADE **2/88¢**



WESTERN FAMILY 16-OZ. WHIPPED TOPPING . . . . . **99¢**

WESTERN FAMILY 20-OZ. SHOESTRING POTATOES. . . . . **69¢**

GORTON'S CRUNCHY 12-OZ. FISHSTICKS. . . . . **\$1.99**

## VARIETY SPECIALS

### G.E. LIGHT BULBS

SOFT WHITE 60-75-100 W 4 PK. **\$1.98**

### ICE CUBE TRAY

RUBBERMAID 2 PK. **98¢**

### PLAY BALL

9 IN. ASSTD. COLORS **88¢**

MURINE CLEAR EYE 5-OZ. . . . . **\$1.98**

ADHESIVE STRIPS CURAD FLEX 30 CT. . . . . **\$1.88**

## VALUABLE COUPON

### BANQUET FRIED CHICKEN

60-OZ. LIMIT 1 **\$4.88**

GOOD ONLY AT FAMILY GROCER CASH VALUE 1/20¢ GOOD MAY 22 THRU MAY 28

## VALUABLE COUPON

### WESTERN FAMILY CANNED MILK

12-OZ. LIMIT 2 **43¢**

GOOD ONLY AT FAMILY GROCER CASH VALUE 1/20¢ GOOD MAY 22 THRU MAY 28

## VALUABLE COUPON

### 4 LB. VALENCIA ORANGES

LIMIT 2 **\$1.29** EA.

GOOD ONLY AT FAMILY GROCER CASH VALUE 1/20¢ GOOD MAY 22 THRU MAY 28



We Reserve the Right to Limit Quantities