

# THE Great Coop Tire Sale!

SALE ENDS APRIL 2nd

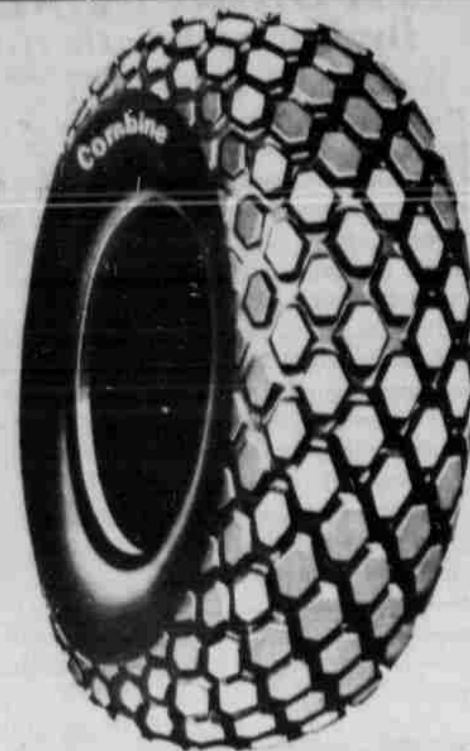
## FIRESTONE COMBINE

23.1 X 26 - 10 ply **\$499.99**

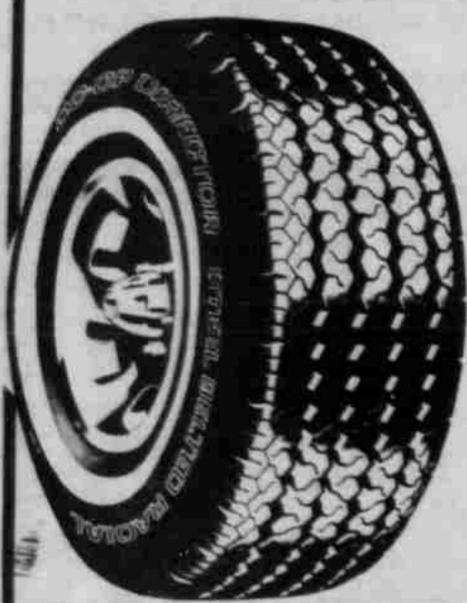
28L-26 - 10 ply **\$599.95**

24.5 - 32 - 12 ply **\$795.95**

plus F.E.T. plus mounting



### CO-OP Director Steel Belted Radial



|             | Reg.     | SALE       |
|-------------|----------|------------|
| P155/80R-13 | \$ 56.17 | \$ 45.74 + |
| P175/80R-13 | 58.57    | 47.67 +    |
| P185/80R-13 | 62.80    | 51.11 +    |
| P185/75R-14 | 66.21    | 53.16 +    |
| P195/75R-14 | 69.07    | 55.46 +    |
| P205/75R-14 | 69.26    | 55.62 +    |
| P215/75R-14 | 71.73    | 57.60 +    |
| P225/75R-14 | 76.62    | 61.52 +    |
| P205/75R-15 | 75.18    | 60.36 +    |
| P215/75R-15 | 79.22    | 63.61 +    |
| P225/75R-15 | 82.42    | 66.63 +    |
| P235/75R-15 | 84.51    | 68.32 +    |

+ Plus F. E. T.  
+ Computer balance available

### CO-OP Agri-Power



|                | Reg.     | SALE   |
|----------------|----------|--------|
| 11.2-24-4ply   | 140.85   | 109.51 |
| 16.9-24-6ply   | 274.04   | 227.60 |
| 11.2-28-4ply   | 152.63   | 126.76 |
| 14.9-28-6ply   | 253.47   | 210.50 |
| 16.9-30-6ply   | 313.81   | 260.61 |
| 16.9-34-6ply   | 348.14   | 289.13 |
| 12.4-38-6ply   | 240.65   | 199.85 |
| 14.9-38-6ply   | 304.24   | 254.34 |
| 18.4-38-8ply   | 479.97   | 403.88 |
| 20.8-38-8ply   | 670.33   | 564.08 |
| 24.5-32-10-ply | 12221.18 | 994.03 |

plus F.E.T. & mounting

### CO-OP Multi-Carrier

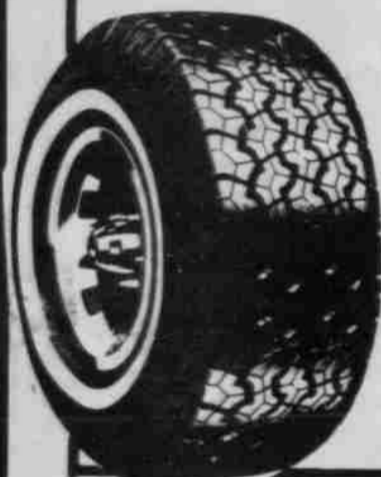


|                          | Reg.     | SALE       |
|--------------------------|----------|------------|
| 700-14 6-ply tubeless    | \$ 55.72 | \$ 46.57 + |
| 700-15 6-ply tube type   | 65.02    | 52.93 +    |
| 700-15 8-ply tube type   | 70.47    | 57.36 +    |
| 750-16 6-ply tube type   | 68.67    | 57.02 +    |
| 750-16 8-ply tube type   | 80.28    | 66.67 +    |
| 825-20 10-ply            | 175.80   | 143.09 +   |
| 900-20 10-ply            | 196.25   | 161.89 +   |
| 1000-20 12-ply           | 245.73   | 210.83 +   |
| 8.75-16.5 8-ply tubeless | 98.53    | 79.12 +    |
| 9.50-16.5 8-ply tubeless | 108.60   | 86.61 +    |

+ Plus F. E. T.  
+ Plus Mounting charge

### Golden Mark

2 full width stacked steel belts, polyester radial body plies, modern 70 series, P-Metric sizes, LRR (low rolling resistance) tread compound for improved mileage. An all weather tire.



|             | Reg.       | SALE       |
|-------------|------------|------------|
| P195/70R-13 | \$ 73.80 + | \$ 60.07 + |
| P205/70R-13 | 76.96 +    | 62.64 +    |
| P195/70R-14 | 79.48 +    | 64.70 +    |
| P205/70R-14 | 83.25 +    | 67.77 +    |
| P215/70R-14 | 86.39 +    | 70.32 +    |
| P225/70R-14 | 91.06 +    | 74.12 +    |
| P215/70R-15 | 85.04 +    | 69.22 +    |
| P225/70R-15 | 92.48 +    | 75.27 +    |
| P235/70R-15 | 98.09 +    | 79.31 +    |
| P245/70R-15 | 106.35 +   | 85.40 +    |

+ Plus F. E. T.  
+ Computer balance available

### CO-OP Agri-Service



|                  | Reg.   | SALE   |
|------------------|--------|--------|
| <b>TUBE TYPE</b> |        |        |
| 760-15-6ply      | 51.67  | 42.06  |
| 12.5L-15-8ply    | 83.10  | 68.10  |
| 12.5L-16-8ply    | 95.39  | 77.64  |
| <b>TUBELESS</b>  |        |        |
| 8.5L-14-6ply     | 65.33  | 53.18  |
| 11L-14-8ply      | 88.15  | 71.75  |
| 11L-15-6ply      | 90.72  | 73.84  |
| 11L-15-8ply      | 96.01  | 78.15  |
| 12.5L-15-8ply    | 106.35 | 86.55  |
| 12.56-16-12ply   | 133.19 | 108.41 |

plus F.E.T. & mounting

### CO-OP Redi-Grip Heavy Service



|  | Reg.     | SALE       |
|--|----------|------------|
| 700 - 15 6-ply                           | \$ 79.37 | \$ 61.11 + |
| 700 - 15 8-ply                           | 85.35    | 65.72 +    |
| 750 - 16 6-ply                           | 80.65    | 63.87 +    |
| 750 - 16 8-ply                           | 92.67    | 73.39 +    |
| 8.25 - 20 10-ply                         | 202.62   | 160.46 +   |
| 900 - 20 10-ply                          | 231.93   | 183.68 +   |
| 1000 - 20 10-ply                         | 278.05   | 220.19 +   |
| 8.75 - 16.5 8-ply tubeless               | 96.22    | 79.37 +    |
| 9.50 - 16.5 8-ply tubeless               | 105.98   | 87.42 +    |
| N78 - 15 8-ply tubeless nylon, whitewall | 138.24   | 114.03 +   |

+ Plus F. E. T.  
+ Plus mounting  
+ Computer balance available

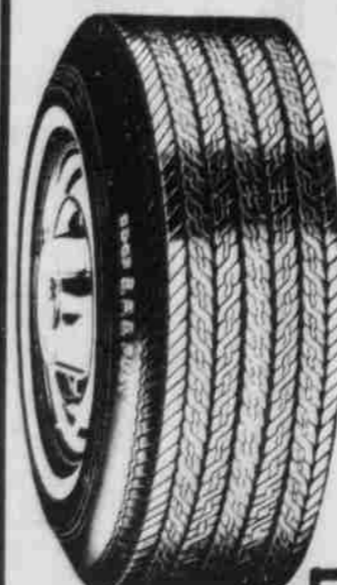
### CO-OP BIG "T" Tractor - Truck Battery



24 month warranty  
all prices exchange

|               |                                    |
|---------------|------------------------------------|
| TG-24 12-volt | <b>\$35.95</b><br>reg retail 48.49 |
| TG-1 6-volt   | <b>\$29.95</b><br>reg retail 35.77 |

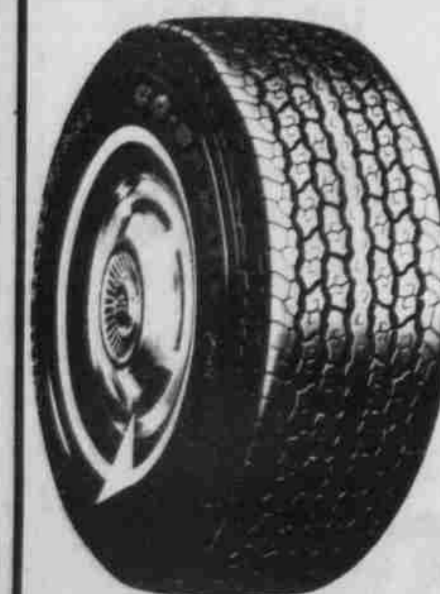
### CO-OP S.P.D. Poly



Plus F. E. T.  
Computer balance available

|               | Reg.     | SALE       |
|---------------|----------|------------|
| P165/80D-13-A | \$ 42.69 | \$ 34.74 + |
| P175/80D-13-B | 46.39    | 36.74 +    |
| P185/80D-13-C | 48.36    | 38.30 +    |
| P185/75D-14-C | 49.72    | 39.38 +    |
| P195/75D-14-E | 50.73    | 40.18 +    |
| P205/75D-14-F | 54.62    | 43.25 +    |
| P215/75D-14-G | 57.26    | 45.34 +    |
| P225/75D-14-H | 59.90    | 47.44 +    |
| P205/75D-15-F | 54.88    | 43.46 +    |
| P215/75D-15-G | 57.29    | 45.37 +    |
| P225/75D-15-H | 60.51    | 47.92 +    |
| P235-75D-15-L | 66.19    | 52.78 +    |

### CO-OP Mark 74 Steel Belted Radial



|             | Reg.       | SALE       |
|-------------|------------|------------|
| P155/80R-13 | \$ 69.25 + | \$ 55.99 + |
| P185/80R-13 | 76.43 +    | 61.79 +    |
| P195/75R-14 | 82.91 +    | 67.03 +    |
| P205/75R-14 | 87.19 +    | 70.49 +    |
| P215/75R-14 | 91.27 +    | 73.79 +    |
| P225-75R-14 | 95.54 +    | 77.24 +    |
| P205/75R-15 | 87.38 +    | 70.64 +    |
| P215/75R-15 | 92.61 +    | 74.87 +    |
| P225/75R-15 | 99.94 +    | 80.25 +    |
| P235/75R-15 | 106.65 +   | 85.05 +    |

+ Plus F. E. T.  
+ Computer balance available

### Country Squire A/P Radial



2 steel belts, polyester radial body plies. An aggressive all wheel/all weather tread design. Raised outlined white letters on some sizes.

|  | Reg.     | SALE        |
|--|----------|-------------|
| HR 78 15 6-ply (raised white letter)                 | \$128.39 | \$ 103.10 + |
| LR 78 15 6-ply (raised white letter)                 | 133.63   | 107.30 +    |
| 30 - 9.50 R 15 6-ply tubeless (raised white letter)  | 140.36   | 112.71 +    |
| 31 - 10.50 R 15 6-ply tubeless (raised white letter) | 149.86   | 120.34 +    |
| 8.75 R 16.5 8-ply tubeless (raised black letter)     | 146.65   | 116.14 +    |
| 9.50 R 16.5 8-ply tubeless (raised black letter)     | 159.82   | 126.57 +    |
| 7.50 R 16 8-ply tube type (raised black letter)      | 149.94   | 118.75 +    |

+ Plus F. E. T.  
+ Mounting  
+ Computer balance available

Warranty on car & truck tires —workmanship & road hazard

Warranty on Farm Tires— workmanship plus 5 year field hazard warranty

**CENEX** Morrow County Grain Growers INC. Lexington 989-8221 1-800-452-7396