



Celebrate Co-op Month

Sale Prices Good October 1-16, 1982

PIPE WRAP KIT

1²⁹



The perfect insulation for either hot or cold pipes. Drip dripping and sweating of pipes. (488341)

4⁴⁹

1⁹⁹



16 oz. spray bottle
Armor All
Protectant
Renews and protects rubber, vinyl, leather, wood and more. (224329)

12 oz. can
WD-40
Lubricates, protects, loosens stubborn parts. (206306)



16⁸⁸

NEW! 1/4" and 3/8" Drive Tool Set
26 PC. SOCKET SET
Durable heat-treated socket set. Full lifetime warranty by Thorsen Tool Co. Includes ratchet, adapter, spark plug wrench and storage case. (439005)



12⁹⁹

FIRE EXTINGUISHER

Effective on gasoline, oil, grease and other flammable liquid fires. UL Rated 10-B-C. Range 13 feet. 1A-10-B-C For all areas of home, boat, car.

\$1 Refund Offer

Get details at participating co-op.

WHITE OR CLEAR SILICONE CAULK
(583488, 583496)

YOUR CHOICE 4⁹⁹

Refund -1⁰⁰

YOU PAY 3⁹⁹



FORGET-IT "OUR BEST"

Up to 620 amps of cold cranking power for winter starting dependability. Never needs water... virtually ends terminal corrosion. Top or side terminals. Just buy it, install it... Forget-it!

DIRECTOR - MF

A powerful battery for large engines, cars loaded with power accessories and high compression import engines. Cold cranking power up to 485 amps at 0° F for sure starts every time in any weather.

DELUXE - MF

A great battery for moderate climates. Meets power requirements for most popular cars with engines up to 355 cu. in. and moderate accessory loads.

\$5.00 Trade in for old battery

INSTANT SILICONE GASKET

1⁷⁹

Waterproof! For water pump and thermostat gasketing. (205487)

RTV BLUE GASKET

Formulated for large flexible flange assemblies like oil pans, valve covers etc. (205073)

2¹⁹



YOUR CHOICE

2¹⁹

RUFFIES

13 gal. Tall Kitchen Bags. (323678)
33 gal. Trash and Lawn Bags. (323758)
5 bu. Superweight Leaf and Lawn Bags. (32374X)



12⁷⁵

24⁹⁵



"BEAR PAW" LOCKBACK KNIFE

3 1/2" rust resistant blade. WondWood handle with solid brass bolsters and linings. Includes leather sheath. (419100)

"SHARP FINGER" KNIFE

3 1/2" hand-honed high carbon steel skinning blade. Solid brass bound with solid nickel silver bolsters. With sternflex sheath. (418810)

GASLINE ANTI-FREEZE

Protects against frozen gasoline.
12 OZ. BOTTLES

3 FOR 1⁰⁰



39⁹⁹

CIRCULAR SAW

Rugged, dependable, and accurate. Cuts 2-3/8" at 90°, 1-7/8" at 45°. Model 574. (401306)

SPRINGFIELD 12" OUTDOOR THERMOMETER

Big 12 inch dial and bold numerals make this thermometer easy to read. Rugged, weatherproof styrene case for years of service. (340080)

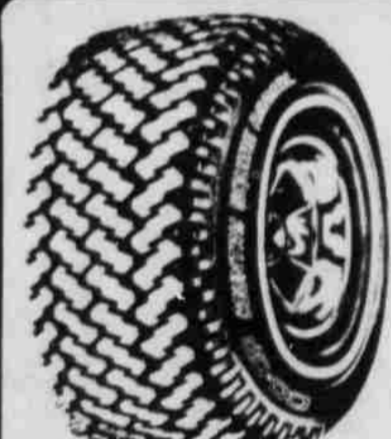
8⁹⁹



6 FT. HEATER HOSE

Quality replacement hose, exceeds requirements, 5/8" or 3/4" (213145, 213153)

1⁷⁹



42¹⁹

Plus \$1.74 F.E.T., Trade & Mounting P155-B0R-13

COUNTRY SQUIRE RADIALS

this quality tire features two fiberglass belts plus two polyester cord radial plies for miles and miles of smooth driving. Saw tooth tread design for great traction.

HOMELITE XL-10 CHAIN SAW

Homelite's lightest chain saw. Less than 8 1/2 lbs. with 10" cutting bar. Automatic chain oiling and Softener muffler. (527881)

99⁹⁵



3⁵⁵

CENEX ANTI-FREEZE

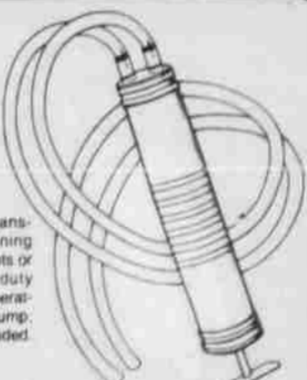
Specially formulated for modern engine blocks. Provides corrosion protection to all cooling system metals.



7⁹⁹

PORT-A-PUMP

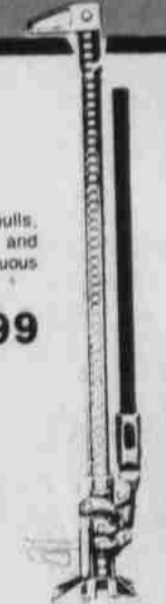
Handy tool for transferring or draining water, light lubricants or solvents. Heavy duty steel with hand-operated, self-priming pump. 8 ft. vinyl hose included. (267442)



3 1/2 TON "HI-LIFT" FARM JACK

3 1/2 Ton farm jack that lifts, pulls, pushes and clamps. Versatile and rugged. 48" high with 36" continuous lift. (21202X)

30⁹⁹



13⁹⁸

3 1/2 LB. SINGLE BIT AXE

High carbon steel. Polished bits. Includes 36" fire-hardened hickory handle. (411862)

4 LB. WEDGE

Square design. Hardened steel for durability. (411731)

4⁹⁹



JERSEY GLOVES

9 oz. comfortable jersey fabric. Cute construction. Save on the 3-Pak! (540154)

3³⁰

14⁹⁸

AXE EYE SPLITTING MAUL

Six lb. hardened steel head for easy splitting. Handle extra. (411790)
8 lb. maul \$16.98 (411774)



CENEX Morrow County Grain Growers INC.

Lexington
989-8221



ASK ABOUT RETAIL CREDIT WHERE YOU SEE THESE SIGNS.

1¹⁹

11 Oz.



STARTING FLUID
Sure-start performance when you need it. (206172)