

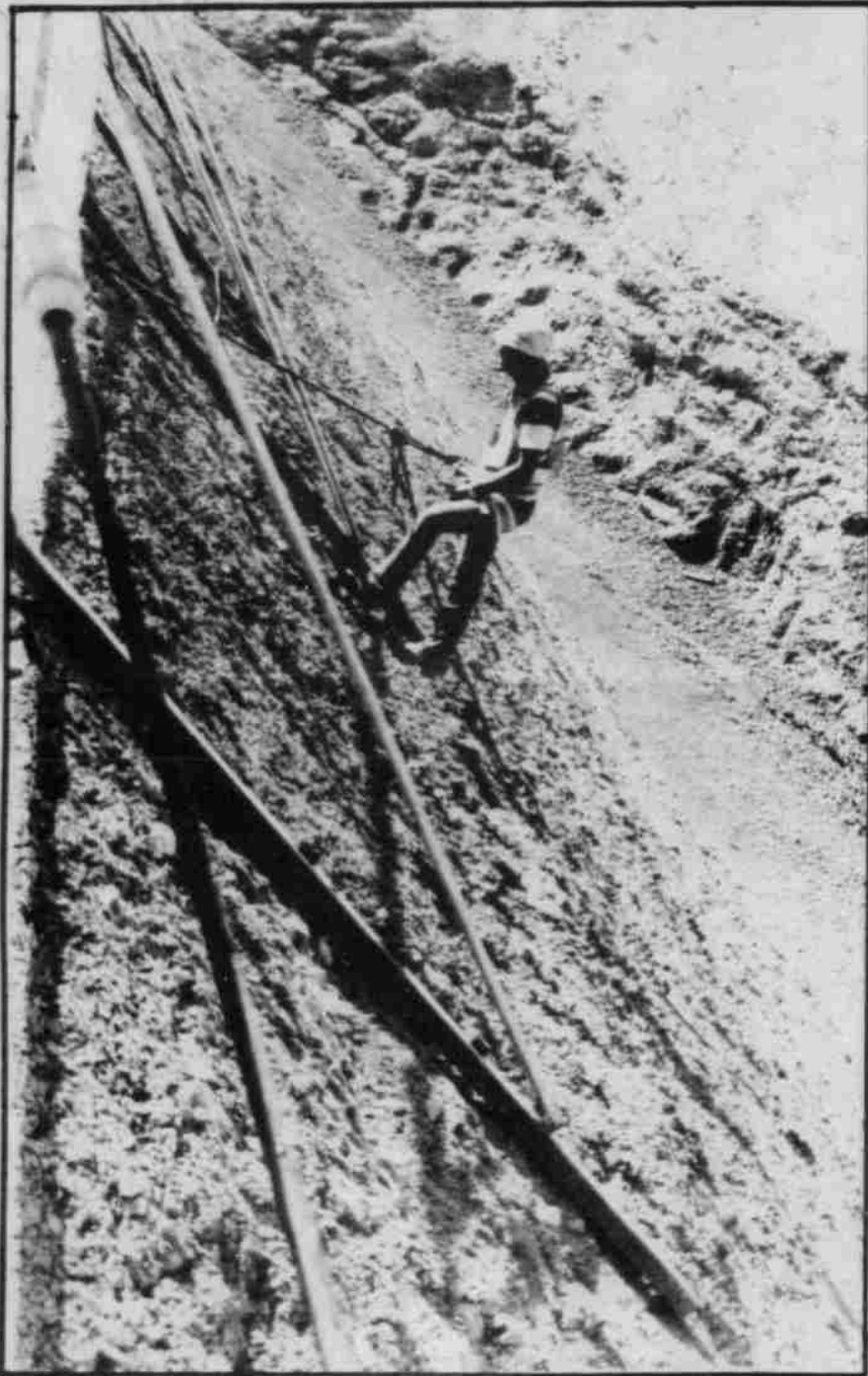
Willow Creek Dam gets bigger everyday



Water truck on top of dam sprays deposited concrete continuously to insure proper bonding of material



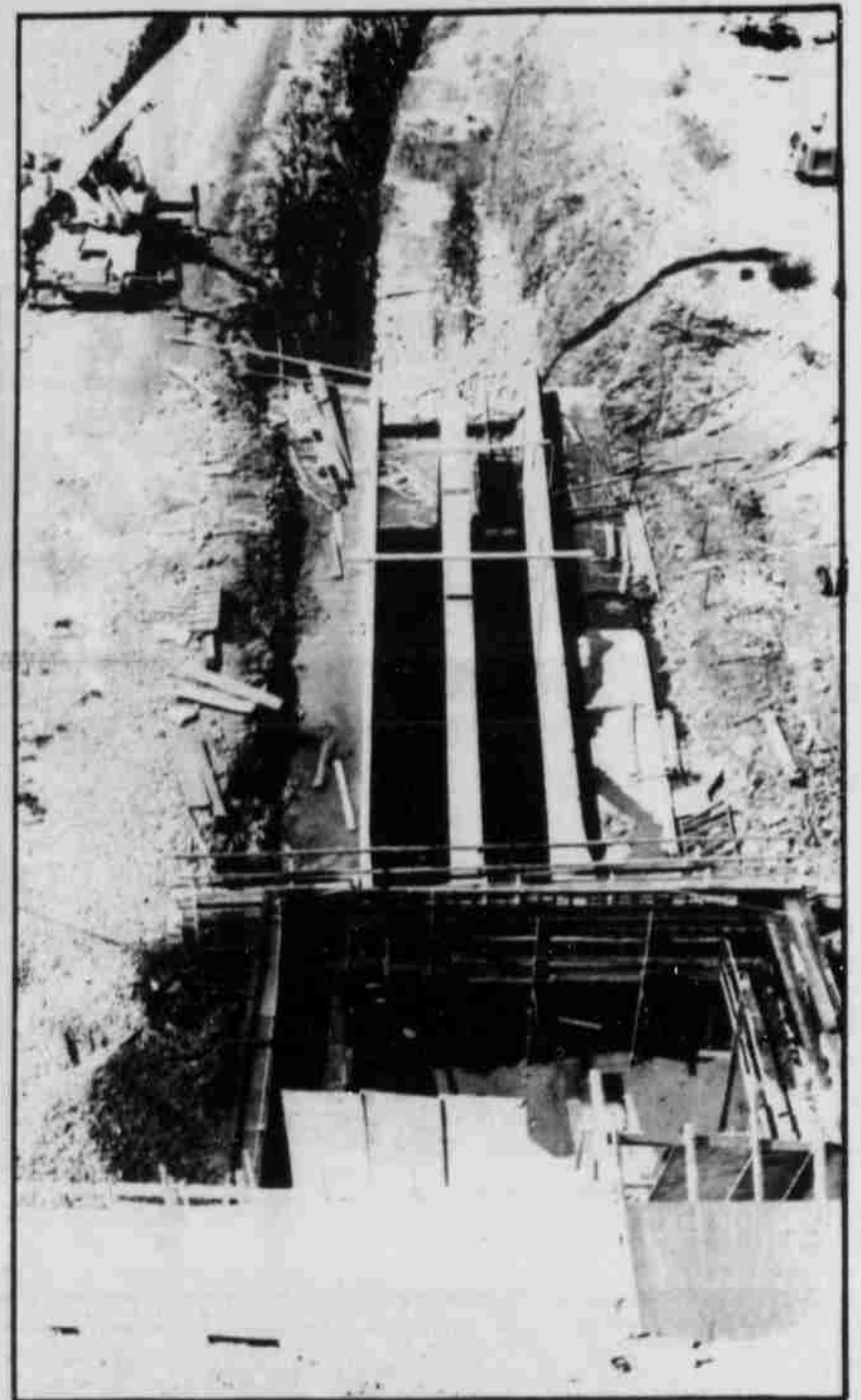
Visitors stand on top of dam structure, which is now over 100 feet high. Final structure will be 169 feet high.



Workman goes over side of dam to adjust side railings



Water will one day cover this side of dam. Face of dam is smooth concrete.



Willow Creek will flow through this channel when dam is completed. View is looking down from top of dam.



Large earth movers such as this make continuous circle bringing crushed rock to top of dam for deposit.



Side of dam facing town Dam is sloped and has a rough texture.