

## Sec. of Agriculture seeks comments

Secretary of Agriculture John R. Block recently asked the public to comment on provisions of the 1983 wheat program, details of which must be announced by August 15, stated a news release from the Morrow County Agriculture Stabilization and Conservation Service (ASCS) office.

Block also said he wanted comments on what method the US Department of Agriculture should use to determine crop acreage bases, not only for wheat but also for feed grains, cotton and rice.

"Whatever methodology we settle on for the wheat program likely will be used for other program crops," Block said. For this reason, it is important that we hear from all segments of US agriculture on this subject," he added. The deadline for comment is June 24, the news release stated.

A crop acreage base is the number of acres of a crop from which a farmer must reduce plantings if an acreage reduction program is in effect. For example, a farmer with a 100 acre wheat base could plant no more than 85 acres of wheat if a 15 percent acreage reduction were in effect, according to the news release.

Farmers who grow several program crops such as corn, wheat and barley, would have an acreage base established for each crop, the news release continued.

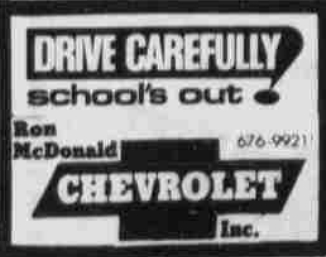
Block said he plans to announce the 1983 program well in advance of the August 15 statutory deadline. He said he will study the public's recommendations and the most current data on US and world crop conditions, production and consumption before he makes final decisions, according to ASCS.

Specifically, comments requested on loan and purchase prices; the target price and national program; whether USDA should establish an acreage reduction or a set-aside program, and if so the percentage of acreage adjustment; whether USDA should establish a voluntary acreage reduction, and if so the level of such a reduction; provisions governing allowance of haying, grazing, and conservation usage of set-aside acreage; a land diversion program and payment for land diversion, offsetting compliance requirements for an acreage reduction program; and methods for determination of 1983 crop acreage bases, the news release said.

## Kinzua reunion planned June 19

All former residents of the late town of Kinzua are invited to attend an annual reunion on Saturday, June 19, at the Isabelle Edwards Hall at Fossil. Registration will begin at 11 a.m. with a potluck dinner following.

Everyone attending is asked to bring a white elephant for an auction, to be held after the dinner, said a reunion spokesperson.



**BUY  
SELL  
TRADE  
G-T  
Classifieds  
676-9228**

## lone woman graduates with education degree

Carol Jean McElligott of lone received a bachelor of arts in elementary education from the University of Portland during the 80th commencement of ceremonies May 9 at Portland Civic Auditorium. Acting President Arthur A. Schulte, Jr. conferred degrees on 417 bachelor's

and 84 master's candidates, according to a news release from the university.

McElligott is the daughter of Donald and Eunice McElligott of lone. She is a 1978 lone High School graduate, where she was a member of the national honor society, active in sports and rally.

## Garden Club to meet

By JUSTINE WEATHERFORD

Members of the Heppner Garden Club will meet at the home of Mrs. Riley Munkers at 6:30 p.m. Monday, June 14, for a potluck dinner.

After dinner the monthly meeting will feature a pro-

gram on arranging flowers with guest Vi Wilgers. Club members are to bring garden flowers and their favorite arrangement containers.

Some of the arrangements made at the meeting will be taken to local banks, the hospital, the library and other public exhibit places.

## School is out!



Heppner Elementary students hurried out the door last Wednesday as summer vacation began

**Good Luck To  
All Junior Rodeo  
Participants!**

**Gardner's  
MEN'S WEAR**



Morrow County 1982  
Junior Rodeo Queen

**KATHY HANSEN** WSJRA APPROVED

# Don't Miss The 12th Annual Junior RODDEO 3 BIG DAYS JUNE 11-12-13

**Performances**  
7 P.M., Friday, June 11  
1 P.M., Saturday, June 12  
1 P.M., Sunday, June 13

**DIVISIONS**  
JUNIORS 9-14  
SENIORS 15-18

**GATE ADMISSION**  
**ADULTS—2.50    UNDER 6—FREE**  
**STUDENTS-6-18 & SR. CITIZENS—1.00**

**EVENTS**

**Open Team Roping After Saturday Show**  
Enter 3 times \$15 per man \$10 in pot  
See Sherree Mahoney

**Open Barrel Race After Saturday Show**  
\$5 - \$4 in pot see Gail Papineau

**Stick horse race Saturday, June 12th**  
2 age groups 3 & 4, 5 & 6  
Trophies & Ribbons

**Church Service Sunday Morning**  
10 a.m. Fair Pavilion  
Movie: More than a champion

**DANCE**  
**JADE**  
Saturday, June 12  
9 P.M.  
Fair Pavilion

**SINGLES—3.00**  
**COUPLES—5.00**

**Morrow County Grain Growers Inc.**    This Ad Sponsored By    **KINZUA CORPORATION**

Lexington 989-8221    And    **K**