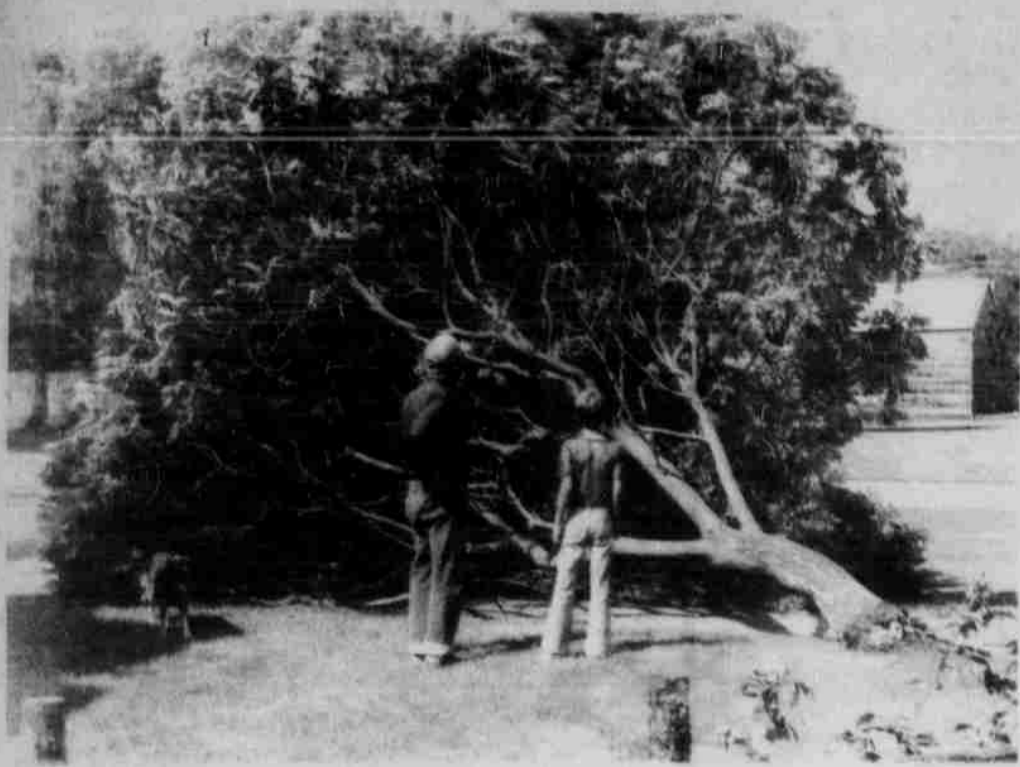


Gale Street well named?



Jim Launer (L) and J.J. Shaw eye a tree that blew over Tuesday afternoon during a wind storm. The tree formerly stood in the Launer's yard at 465 Gale Street in Heppner. A large branch was also blown down from a

tree at the Dean Robinson residence, next door to the Launer's. No damage was apparent at either residence.

Farmers fight crime

Out in the country, you don't have to worry so much about crime, right?

Wrong. Last year, more than \$324,000 in machinery alone was taken from Oregon farmers, according to the state Law Enforcement Data System.

In addition, gasoline and tools are stolen every day. And thousands of dollars in damage is done by vandals who drive across newly planted fields, or shoot at machinery.

A farm's isolation is part of what makes it attractive to thieves and vandals, says Oregon State Police Cpl. Roger Morris of Pendleton.

A large number of thefts can be traced to teenagers who siphon gasoline from isolated outbuilding areas, he says. They may see tools laying around loose and take them, too, almost as an afterthought.

For that reason, simply keeping tools in a locked box or building will discourage many thefts, says Morris.

The more "professional" thieves -- those looking for something to sell, who are willing to break into a locked building -- can be discouraged by engraving or stamping property with the owner's driver's license number. The identification makes it harder for thieves to sell the stolen property and makes it easier for police to find the owner.

Finally, says Morris, it helps to be neighborly. "Professional" thieves will prowl an area two or three days before a "job". An alert neighbor can keep an eye out for suspicious characters, noting the description of the vehicle or, better yet, getting the license plate number.

The Oregon Wheat Growers

League offers a reward of up to \$1,000 for information and evidence resulting in the arrest and conviction of anyone stealing or vandalizing property of a League member.

Reward posters for display around the farm may be obtained from the League, P.O. Box 400, Pendleton, 97801.

The Oregon Farm Bureau sponsors a program to help farmers mark their property with their Oregon driver's license number. County farm bureau offices have kits with a weatherproof warning placard, stickers and inventory sheet. They also have tools available, with instructions, for stamping the numbers into machinery.

The incidence of prosecution in farm theft and vandalism cases is rather low, says Oregon State Police Superintendent John C. Williams. When it comes to final documentation, he says farmers are sometimes concerned about retribution from the accused vandal or thief.

But if anything is to be done about the problem, farmers have to report crimes to the county sheriff or state police.

"If a number of reports are turned in, there may be more pressure to get something done," says Larry Starr of Summerville, chairman of the Wheat League's theft and vandalism committee.

"If you don't report it, we don't know about it," he says. Adds Supt. Williams, "This is the only way that we can accumulate statistical data and place more patrols in certain areas."

The Oregon Wheat Growers League is a non-profit organization representing Oregon's 9,000 wheat farmers.

Forest Report

The Umatilla National Forest office has issued the following weekly recreation report for the Dale, Heppner, Ukiah and Walla Walla districts:

The fire danger on all districts of the forest is low.

The Supervisor's Office, Pendleton, and Dale, Heppner, and Walla Walla Ranger Districts are open from 7:30 a.m. to 4:30 p.m., Monday through Friday. Pomeroy Ranger District is open daily from 7:30 a.m. to 4:30 p.m. Ukiah Ranger District is open 7 a.m. to 4:30 p.m., Monday through Friday.

DALE RANGER DISTRICT

422-3311

Snow elevation: 6,500 feet.

Lakes: Olive Lake, Jumpoff Joe, and Lost Lake are free of ice.

Trails: Granite Creek, North Fork John Day, Silver Butte, Lake Creek Trails are open and maintained; however, due to large amounts of dead lodgepole falling across trails daily, people should be prepared to cut their way in and out.

Roads: All roads are open. Road 10 between Olive Lake and Fremont Powerhouse is muddy and rough, travel by high ground clearance vehicles only.

Campgrounds: North Fork John Day, Olive Lake, and Tollbridge Campgrounds are open on a self-service basis. There is no drinking water, however, Tollbridge Campground will have drinking

water after June 23.

Fishing: Fishing is fair to poor due to high and muddy rivers and streams.

Log trucks are hauling on Road 10 and forest visitors should be careful and drive defensively.

The Fremont Powerhouse will be open for tours beginning July 1.

HEPPNER RANGER DISTRICT

676-9087

Lakes: Bull Prairie and Penland Lakes are free of ice.

Trails: Copple Butte No. 3052 is open and Bull Prairie Lake No. 3056 is open and maintained.

Roads: All roads are open. County road into Penland Lake is in poor condition. Wet, muddy conditions prevail off main roads.

Campgrounds: Bull Prairie and Fairview Campgrounds are open. The water is turned on at Bull Prairie but the supply is limited. Please be conservative in your use of water.

Fishing: Fishing is fair to poor at both Bull Prairie and Penland Lakes.

Mushrooms of several varieties can be found at the higher elevations. Wildflowers are in abundance.

Firewood permits are available at the district office in Heppner and the supervisor's office in Pendleton.

UKIAH RANGER DISTRICT

427-3231

Trails: All trails are now maintained and open. Motor-

cycles should avoid using the Big Creek and Winom Creek Trails until they dry out. Both trails have been extremely muddy.

Roads: All roads are open and many have been graded. Some roads have wet spots, but most are drying out well.

Campgrounds: All campgrounds are open on a self-service basis. Please help to keep the restrooms clean and remember to pack your garbage out.

Cauliflower mushrooms are still in season.

WALLA WALLA RANGER DISTRICT

325-5500

Jubilee Lake and Woodward Campgrounds are open. Garbage collection and fee collections will commence June 26 at both campgrounds.

A corridor of National Forest land in the South Fork of the Walla Walla River area is closed to all vehicles over 40-inches wide. The area included in the closure is a corridor of land on both sides of the river. Recreation use above the National Forest boundary will be limited to hikers, horseback riders, and motorcycles.

Woodcutting permits for the 1981 season may be obtained at the district office located at 1415 West Rose, Walla Walla, Wash. Self-issuing permits are available 24-hours daily outside the Walla Walla office and at the headquarters office in Pendleton.



Helpful Hints On Using Protective Chemicals Safely

SAFE STORING-- DO'S & DON'T'S

Here are some common sense do's and don'ts about the proper way to store the protective chemicals you use.

• DO keep chemicals in their original containers. Never remove the labels. All containers should be securely capped.

- DON'T ever store garden chemicals in soft drink bottles or any other containers that could lead anyone to mistake the contents for food or drink.
- DO store chemicals on strong, stable shelves, out of reach of children.
- DON'T store chemicals near food.
- DO remember chemicals are best stored in a locked, well-ventilated space, out of the sun and clear of pilot lights and other open flames, since fumes could catch fire. A garden shed, tool room or garage is better than a basement in the house.

Marriage licenses

A marriage license was issued at the Morrow County Clerk's Office in Heppner to Ray Joe Miller, 18, Heppner and Debbie Larita Marquardt, 18, Lexington.

Correction

Janice Healy is Miss Rodeo Oregon, not Miss Rodeo America as earlier stated in the June 18 Around About column of the G-T. Healy will compete for the America title later in the year.

COOL WEAR ON HOT DAYS

Summer's Catch!

Also good for
summer and vacation,
NIKE track shoes & SALT WATER Sandals for the kids!!

SHOE BOX

LES SCHWAB'S

MOVING SALE

UNBELIEVABLE SAVINGS

10% — 50%

TIRES, WHEELS, BATTERIES, SHOCKS & ACCESSORIES

"WE WOULD RATHER SELL IT THAN MOVE IT"

HURRY!!, THIS SALE WILL LAST ONLY UNTIL WE ARE MOVED INTO OUR NEW LOCATION!

THE SUDDEN SERVICE BOYS

Tires

LES SCHWAB

HEPPNER 676-9463 or 676-9481

ON SALE ON SALE ON SALE ON SALE ON SALE ON SALE ON SALE ON SALE ON SALE

HAVE A BLAST

AT OUR JULY 4th SALE

PEPSI 1⁵⁹

6-pak cans plus deposit

LUCKY Cold Packs 2⁹⁹

12 12 oz. Cans plus deposit

PEACHES 49^c lb.

HAMBURGER 1²⁹ lb.

Prices Effective July 2-10

S&J Market