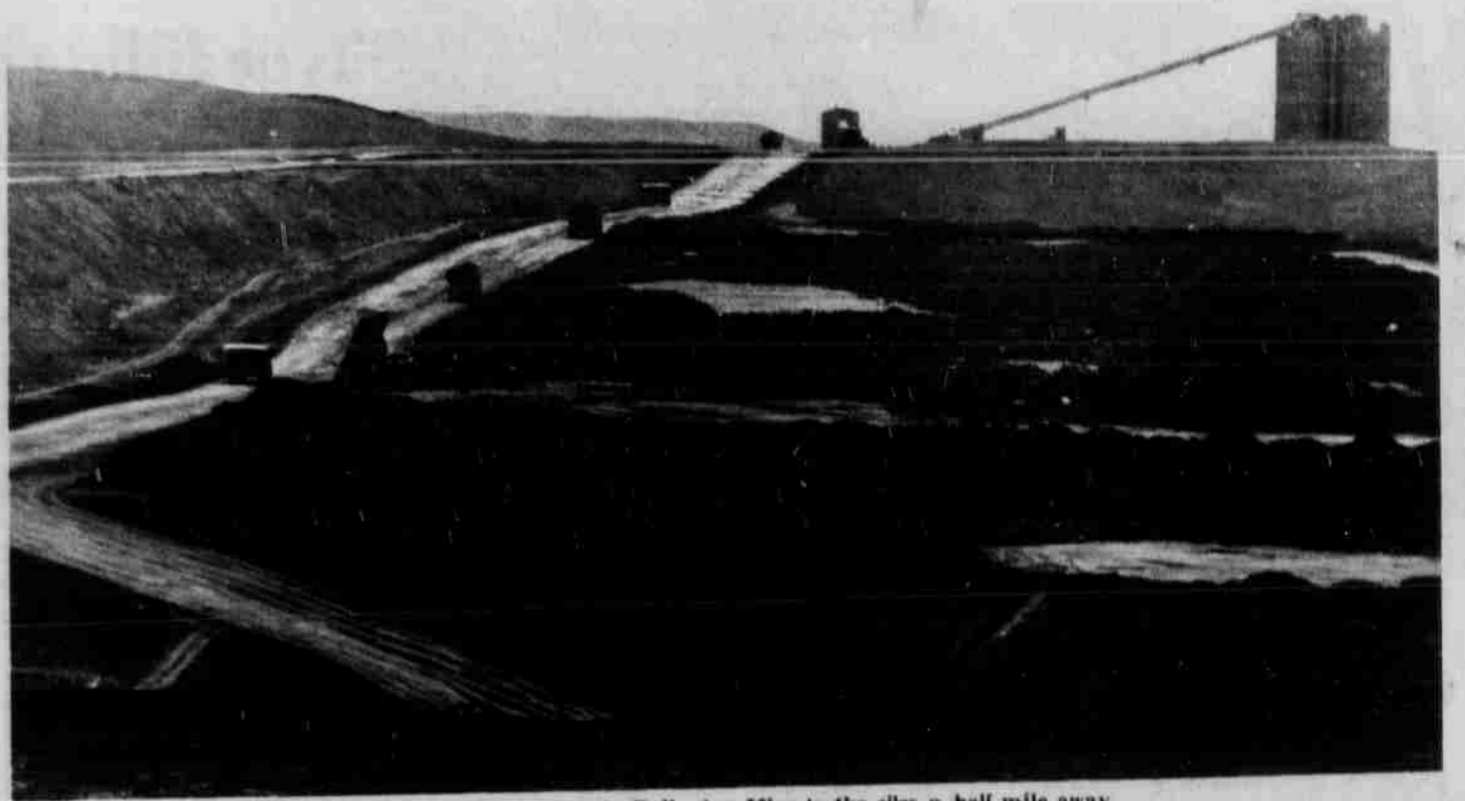
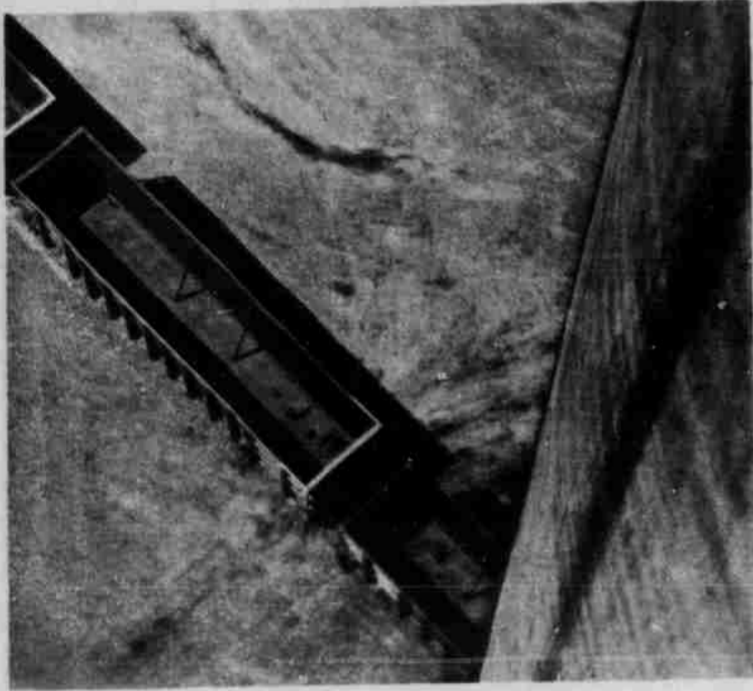




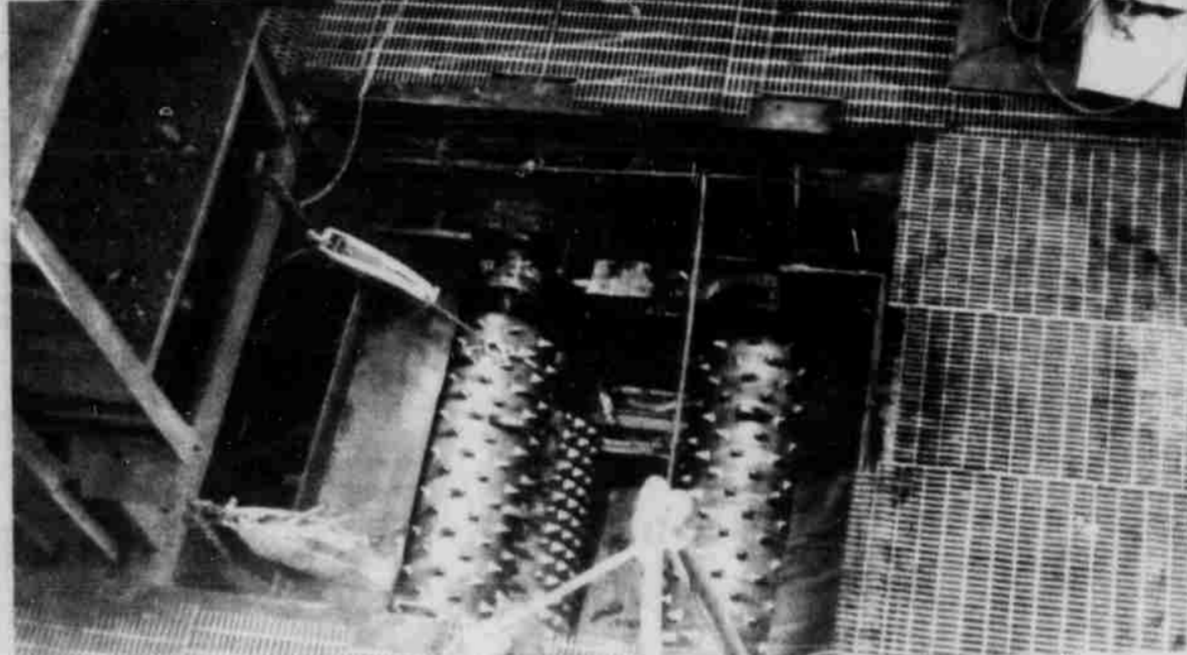
An empty train pulls under a silo at the Eagle Butte Mine.



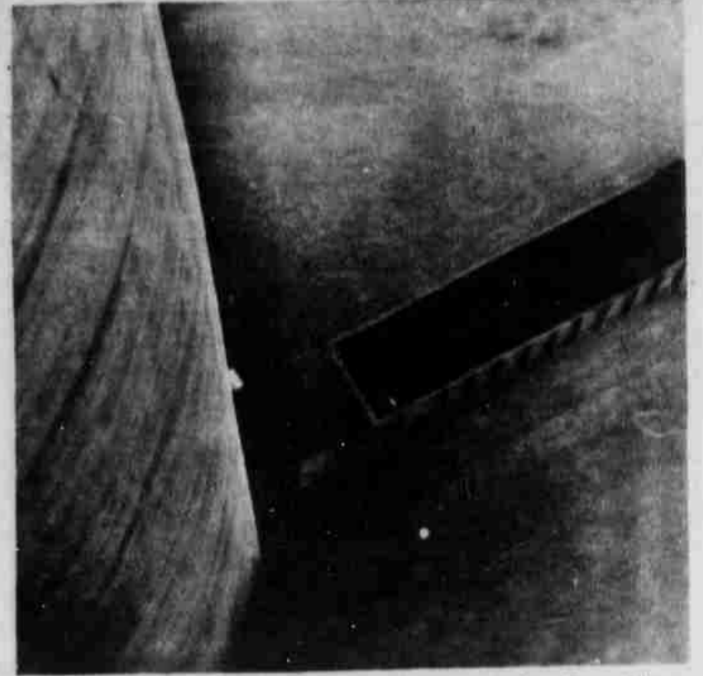
Trucks carry coal from the Belle Ayr Mine to the silos a half mile away.



Empty train cars go into the silo...



This crusher, 80 feet underground from where the massive dump trucks drop the coal, usually chops the coal into smaller pieces but its cover is off and it is shut down because of a mechanical problem.



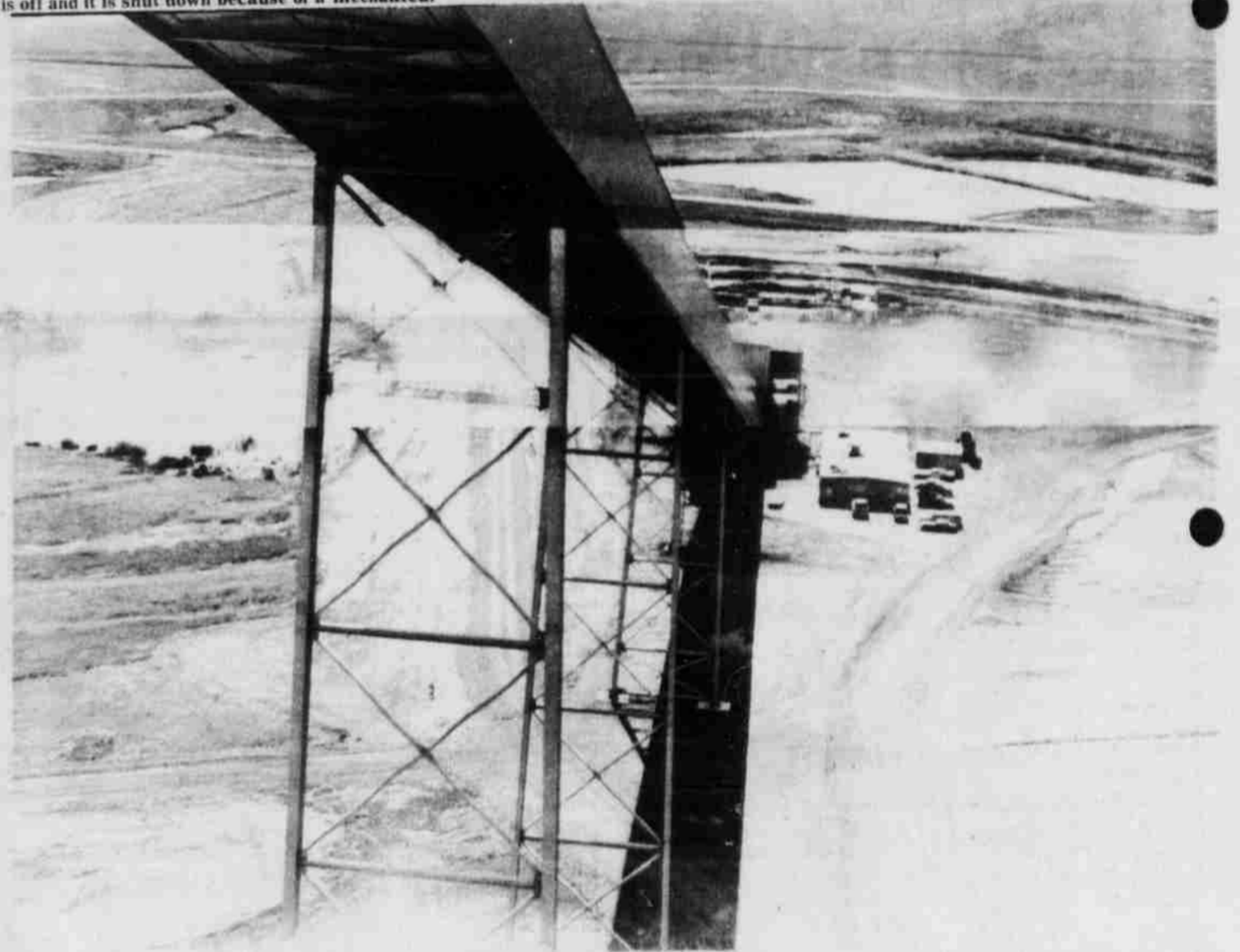
...while cars full of the black gold flow out the other side.



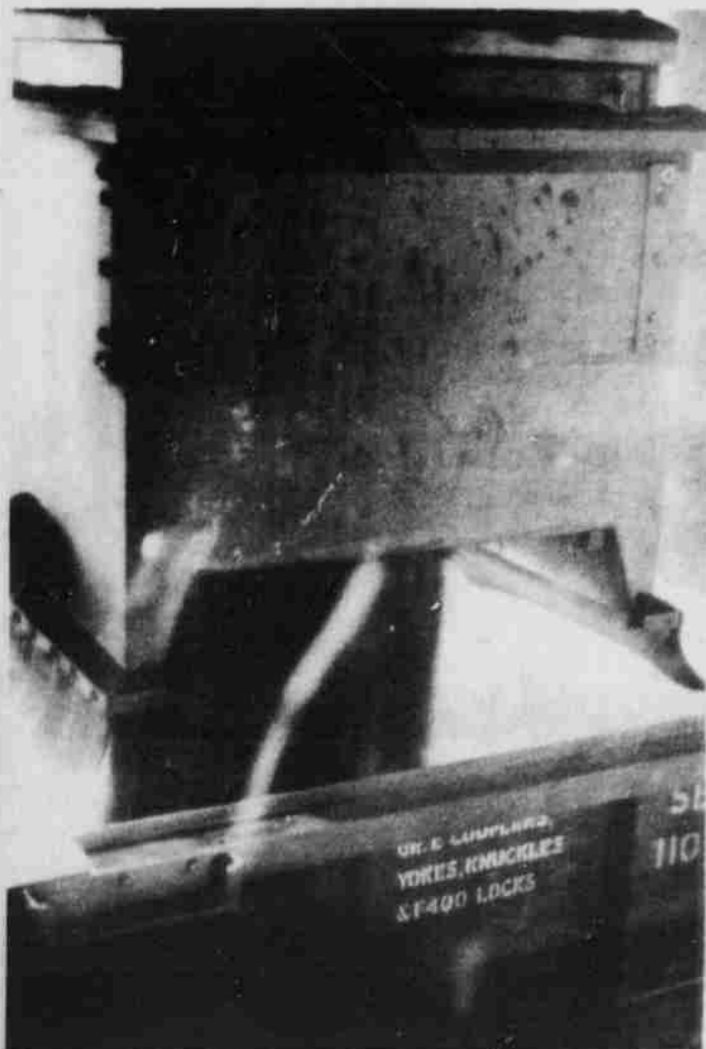
Back at the Holiday Inn where we stayed, coal statues were for sale at the gift shop.

WYOMING C O A L

Photos by
Steve Powell



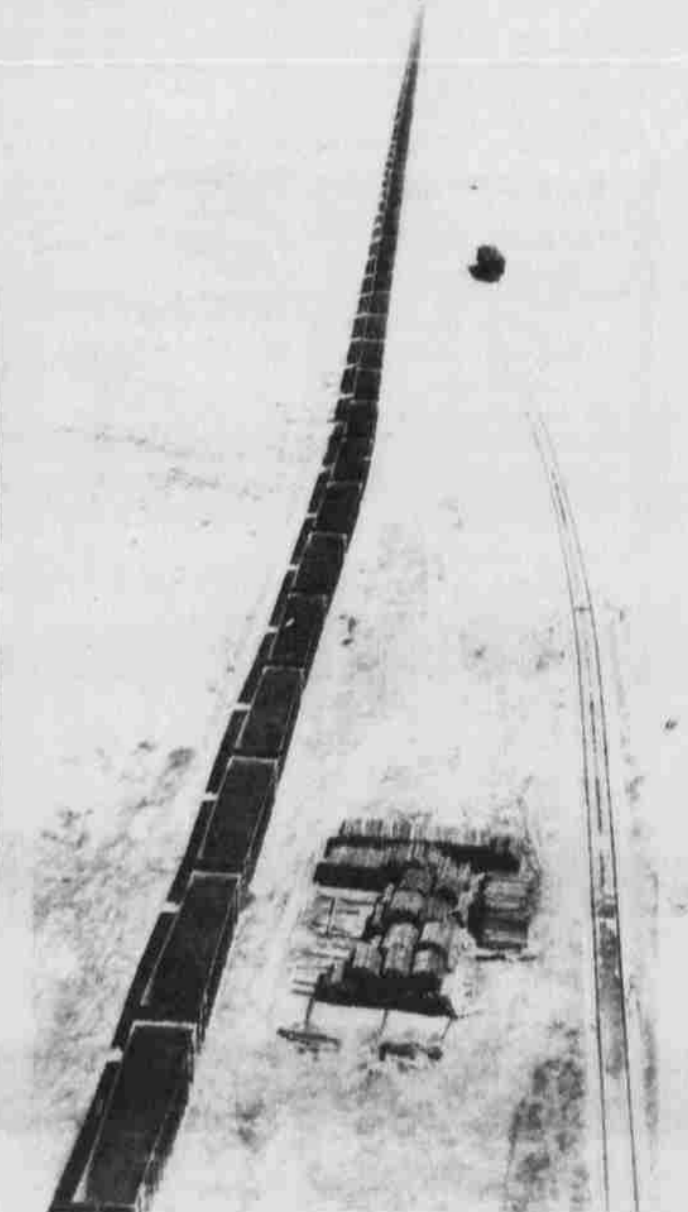
From atop the 200-foot tall silos, the photo looks down the long chute that surrounds the conveyor belt.



Inside a silo the coal drops out of a chute into an empty car.



No-This is not a Mt. St. Helens shot but an explosion to loosen up the coal at the Eagle Butte Mine. Animals do not seem to be scared of the mine activity at all as this bunny (at right) was within 100 yards of the mine and almost got hit by a grader moments after this shot.



A loaded train heads off for Mountain View.