

# Living Christmas trees do double duty—as decorations and plants

Living Christmas trees do double duty, first as a decoration and then as a landscape plant. They are purchased just

before the December holidays, brought into the house as a Christmas tree, then planted permanently outside.

"Living Christmas trees must be handled properly in order to survive the move indoors and then out again."

say Ray McNeilan, Oregon State University Extension home gardening agent. Some of the more popular

living Christmas trees are Scotch pine, Douglas-fir, shore pine, blue spruce, noble fir, Austrian pine, redwood

and giant sequoia. McNeilan advises checking at local nurseries to find out which varieties are adapted to the

different growing conditions found in Oregon. "Also, some of these trees will eventually grow quite tall,

so be sure you have space in your home landscape to accommodate them," McNeilan says.

Living Christmas trees can be purchased in two forms: containerized or balled-in-burlap. Trees grown in containers are more likely to survive the indoor-outdoor transitions and are simply easier to deal with, according to McNeilan.

Moreover, trees that were grown in their containers and have well-developed root systems are harder than those that have just been dug and transplanted to large pots. When buying a containerized tree this Christmas, find out how it was grown before making the purchase.

However, a nursery-grown balled-in-burlap tree that has been properly root-pruned can make an excellent living Christmas tree, even if it requires a bit more work.

When the tree is brought home, a two or three stage relocation procedure should be used so the tree can adjust to warmer inside temperatures. Place it in an unheated garage for four days, then in an unheated room in the house, if possible.

A containerized tree can be left in its container indoors. The balled-in-burlap tree must be placed in some sort of tree stand or pot that will support it and allow it to be watered. Leave the burlap wrapped around the roots and tree trunk while it is in the house.

Place the tree in the coolest location in the room where it will be a decoration. Keep it away from hot air ducts and large windows where the sun could cause severe scald. The tree should be kept at normal indoor temperatures no more than four to five days.

The tree may respond to the higher indoor temperature by starting to grow. Test the container soil surface daily and add water when it feels dry. Water a balled-in-burlap tree only enough to keep the rootball from drying.

"However, most people fail to water the tree enough and as a result it dries out and the roots are damaged," says McNeilan.

Decorations are fine as long as they do not break twigs and branches. Keep hot bulbs away from the foliage and do not use flocking artificial snow.

When it's time to move the tree outdoors after the holidays, reverse the procedure. Move it to successively cooler locations before placing it completely outdoors.

Planting instruction for containerized trees: dig a hole at least twice the size of the tree's estimated root area. Mix the soil from the hole with an equal amount of organic matter such as peat moss, compost, rotted manure, sawdust or leafmold.

The organic matter is especially important in clay soils that do not drain well, McNeilan notes.

Remove the tree from the container and spread the roots out as much as possible. Then place the tree in the planting hole so the soil surface meets the tree trunk at the same place it did when the tree was in the container.

Fill the hole around the plant with the mixture of soil and organic matter and water it in. Do not fertilize the plant until late spring. An organic surface mulch will protect the tree from cold temperature.

Planting instructions for balled-in-burlap trees: dig a hole twice the size of the rootball and mix the soil from the hole with an equal amount of organic matter. Cut the twine from around the tree trunk and unwrap the burlap from the upper half of the rootball.

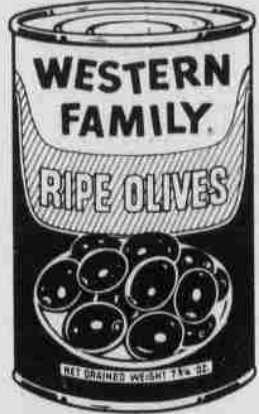
Place the tree in the hole so the trunkline created by the soil in the rootball is at the soil surface. Fill the hole around the tree with the mixture of soil and organic matter and water it in. Do not fertilize the tree until late spring.

Again, an organic surface mulch will protect the tree from cold temperatures.

## MEADS THRIFTWAY in Umatilla & Hermiston

### Christmas to Everyone

WESTERN FAMILY  
PITTED RIPE OLIVES



SELECT OLIVES,  
6-OZ. SIZE

55¢

WESTERN FAMILY  
ORANGE JUICE



PURE ORANGE  
JUICE, 12-OZ. SIZE

69¢

DEL MONTE  
VEGETABLES



CUT OR FRENCH GREEN BEANS, PEAS,  
CREAM STYLE OR WHOLE KERNEL CORN

TO  
17-OZ.

3\$1  
FOR

7UP, PEPSI,  
CANADA DRY OR SQUIRT

YOUR  
CHOICE

4 \$1  
FOR

PLUS  
DEPOSIT



WESTERN FAMILY  
CRANBERRY  
SAUCE  
JELLIED OR WHOLE

16-OZ.  
SIZE  
MIX OR  
MATCH

3\$1  
FOR

#### THRIFTWAY CHRISTMAS VALUES

- MANDARIN ORANGES Western Family, 11-oz. .... 49¢
- WESTERN FAMILY FRUIT COCKTAIL 17-oz. Size ..... 49¢
- IMPERIAL MARGARINE, QUARTERS lb. Pkg. .... 69¢
- KRAFT MIRACLE WHIP SALAD DRESSING 48-oz. Size ..... \$1.79
- MJB COFFEE Regular or Automatic Drip, lb. Size \$3.15 Regular, Automatic Drip or Electric Perk, 3-lb. Size ..... \$8.49
- DUNCAN HINES LAYER CAKE MIXES Assorted Flavors, 18.5-oz. Size ..... 79¢
- CASCADE POWDERED DISHWASHER DETERGENT 65-oz. .... \$2.19
- ZEE NICE 'N SOFT BATHROOM TISSUE White, 4-Roll Pkg. .... 89¢

BAKERY TREATS  
BROWN & SERVE  
ROLLS  
SHUR-FRESH WHITE, WHEAT  
OR BUTTERFLAKE



PKG. OF 12  
YOUR CHOICE

2.99¢  
FOR

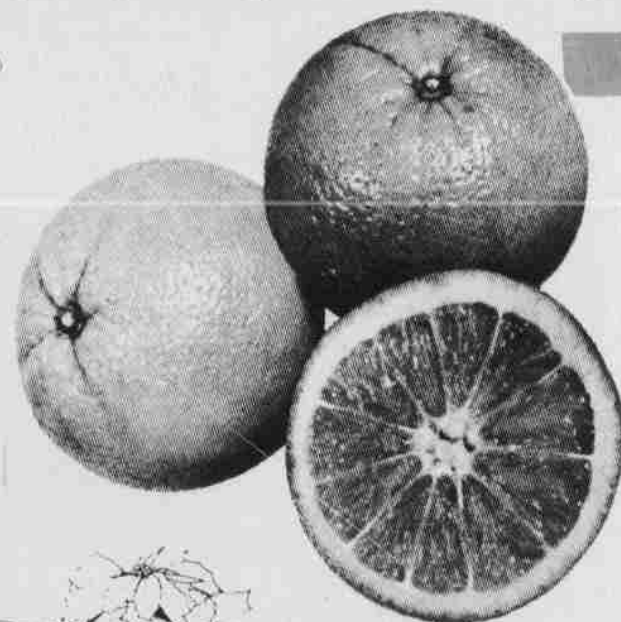
- SHUR-FRESH RYE BREADS Assorted Varieties, 15-oz. .... 59¢
- SHUR-FRESH 2-INCH DONUTS Plain, Powdered or Crunch, Pkg. of 12 ..... \$1.29

#### THRIFTWAY FRESH PRODUCE

NAVEL ORANGES

CHOICE QUALITY  
A HOLIDAY  
TRADITION  
ORANGES MAKE A  
GREAT STOCKING STUFFER

5 \$1  
LBS.



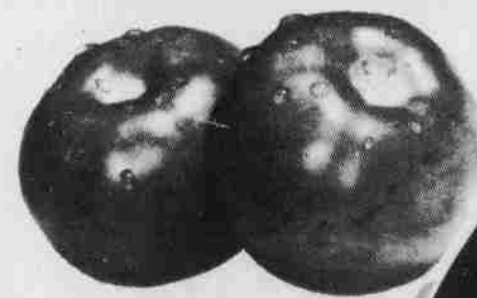
FLORIDA GROWN

FRESH TOMATOES  
PREMIER SALAD  
INGREDIENT, PACKED  
WITH VITAMIC C 49¢  
LB.

U.S. NO. 1  
FANCY YAMS  
A HOLIDAY  
FAVORITE 29¢  
LB.

LARGE  
AVOCADOS  
FROM CALIF. 49¢  
EA.

ALGERIAN  
TANGERINES  
SWEET  
& JUICY 29¢  
LB.



HOLIDAY  
POINSETTIAS  
6-INCH POT

\$3.98  
EA.

#### FROZEN FOODS

WESTERN FAMILY  
VEGETABLES

BROCCOLI CUTS &  
CAULIFLOWER,  
BROCCOLI CUTS OR  
CALIFORNIA BLEND  
20-OZ. SIZE

89¢

PETITE PEAS Western Family, 20-oz. .... 65¢  
COOL WHIP Birds-eye, 8-oz. Size ..... 85¢

PUMPKIN CUSTARD PIE

MRS. SMITH'S  
10-INCH  
46-OZ. \$17.9

