

## Moro farmer elected wheat president

The Oregon Wheat Growers League has elected Don Thompson, Moro, as president of the statewide wheat growers' organization. The action came at the conclusion of the growers' 52nd annual convention in Portland.

Thompson's farm is part of a family farming operation. He farms with his brothers, Keith and Ted. Thompson's son, Ron, farms with him also.

The Thompson's Sherman County farm land receives about 11 inches of rainfall each year. Don farms with stubble mulch practices to keep wind and water from eroding the soil. He stated that "we must keep the soil with us for future generations."

Thompson is a past state committee member of the Agriculture Stabilization and Conservation Service (ASCS);



Don Thompson

Sherman County planning commission; past school board member and member of the budget committee; and is active in the Presbyterian Church in Moro.

## NFO to give grain seminar at Ione

The Northwest Grain Coordinator for the National Farmers Organization will give a grain seminar Dec. 20 at Beecher's Cafe in Ione.

Ray Jorgensen will instruct the seminar from 10 a.m. to 3 p.m.

According to Don Peterson, grain chairman and past-president of the state NFO, everyone is welcome to attend the seminar. The cost is \$5, which includes lunch. He said advanced tickets may be obtained at Beecher's Cafe.

Jorgensen will have four topics of discussion at the seminar. The first will be energy systems and the use of renewable energy. The second will be grain trade and marketing. He will then give

an update on the amount of grain there is and at what prices grain is being sold at. The final topic is on how farm power systems influence the price levels of grain.

"I encourage everyone to come because we do not have the opportunity for something like this very often," Peterson said. "It is a democratic procedure to join the NFO and do something about our own destiny. We have to start to think in terms of what we might do about low prices."

Peterson added that Jorgensen will just be back from the National Farmer's Organization convention in Kansas City Dec. 10 to 13 when he will lead the seminar so he should be able to answer questions about the national convention.



Morrow County CowBelles, the women's affiliate of the Livestock Growers organization, staged a mock style show at the annual banquet at the Morrow County Fair pavilion last Friday. About 175 persons were in attendance. Dinner was served by the Lexington Grange.

Morrow County Farmers interested in "Dry Peas"

Pendleton Grain Growers will host a luncheon

at

Beecher's Cafe

Friday, December 14th

12:00 Noon

Interested persons contact

Gayle McCarty at McKennon Station

276-7611

Join the crowd and **SAVE** during the **Les Schwab** early season snow tire Sale!

THE SUDDEN SERVICE BOYS **Tires LES SCHWAB**



Here's our special winter tire!  
**Snow-Flex Retread**  
The colder it gets, the better it grips!



600x12	\$19.65	A78-13	20.45
560x13		B78-13	21.80
615x13		C78-13	23.30
600x13		B78-14	21.75
C78-14	23.25	G78-14	28.40
D78-14	24.00	H78-14	29.95
E78-14	24.80	A78-15	20.45
F78-14	26.30	B78-15	21.80
		F78-15	26.25
		G78-15	28.60
		H78-15	31.20
		J78-15	32.95
		L78-15	34.70

Tax 33c to 64c. Price exchange with Recappable Trade In Add \$2.00.

**Snow Power STEEL RADIAL**  
The traction & ride you like!

P165R13	45.50	F.E.T. 1.87
P175R13	47.00	P225R14 61.15
P185R14	53.05	P205R15 56.05
P195R14	54.55	P215R15 58.15
P205R14	56.05	P225R15 61.15
P215R14	58.15	P235R15 64.45

Plus Exchange—Mounted Free

**HIGH TRACTION TREAD WINTER RADIAL**  
SPECIAL RUBBER COMPOUND DESIGNED FOR TRACTION WITHOUT STUDS  
SALE PRICED

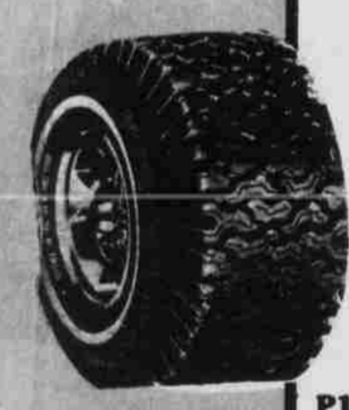
P185R13	45.40	Plus 2.13 Tax
P195R14	51.30	2.39
P205R14	53.30	2.71
P215R14	55.80	2.87
P225R14	58.70	2.97
P205R15	54.60	2.70
P215R15	57.20	2.79
P225R15	60.20	3.08
P235R15	64.40	3.33

MUD AND SNOW **TRACTION**

**ROAD HAZARD WARRANTED**

700x 15-6 PLY...	\$5.178	Plus 2.23 F.E.T.
750x 16-8 PLY...	\$6.853	Plus 4.09 F.E.T.

Here is a tire with tread design to give you extra traction when needed!  
• WITH LIKE CAPPABLE EXCHANGE



**Batteries**

Group 24 3600	Group 24 6000
3-Year Warranty	5-Year Warranty
43.22	58.71

LES SCHWAB Tires Installed Free

ENRICH YOUR HOLIDAY  
**COME TO CHURCH THIS CHRISTMAS**

**CHURCH DIRECTORY**

**First Christian Church**  
Edwin W. Sikes, minister  
275 Corner of Gale and Center Street 676-9209  
Sunday School: 9:45 Worship Services: 11:00

**St. Patrick's Catholic Church**  
Father John O'Brien Gale Street 676-9462  
Midnight Mass on Christmas eve  
Christmas morning at 11:00 a.m.  
8:45 a.m. at Ione

**Ione United Church of Christ**  
The Reverend Cathy Barker  
Ione United Church of Christ, church school service, Dec. 16 at 5 p.m. with a potluck and caroling. "The hanging of the Greens," on Christmas Eve at 10:30 p.m. with a candlelight and communion service. "The Light of the World."

**Seventh Day Adventist** 676-5225  
Pastor Danny Adels 506 N. Minor  
Saturday 11:00 Services "Christ the Hope of the World"  
Service on Dec. 22nd Sabbath School 9:30 Saturday

**Christian Life Center**  
Corner of Willow & Gale 676-5581  
Pastor Doug Thomas  
Christmas Program, Dec. 16th at 11:00 a.m. Service

**Lexington Church of Christ** 989-8566  
Corner of Arcade & B Pastor Robert Nash  
Church Services at 11:00 a.m.  
Sunday School at 9:45 a.m.

**Hope Lutheran Church**  
John Moss, Pastor Parish Office—676-9940  
Covins & Alfalfa, Heppner  
Hope Lutheran Church, Sunday school program Dec. 23 at 11 a.m. with a coffee hour following Christmas Eve service, candlelight and communion service at 6 p.m.

**Valby Lutheran Church**  
Ione—Goosberry  
Valby Lutheran Church, Sunday school program, Dec. 16 at 9 a.m. with a reception following. Christmas Eve Service, Candlelight and Communion service at 8 p.m.

**All Saints Episcopal**  
All Saints Episcopal Church, Services Dec. 16, 10:30 a.m. with Father Robert Anderson.  
Dec. 30 services at 10:30 a.m. with Bishop Spofford. Christmas Eve services at 8 p.m. with Holy Communion.

**United Methodist Church**  
The Reverend Mike Sheridan  
Regular Service Sunday at 10:00 a.m.  
Candlelight Service Dec. 24th at 11:00 p.m.

**Tires LES SCHWAB**

Hermiston 567-8528 Pendleton 276-1571

Heppner 676-9463 676-9481

LES SCHWAB'S EZ CREDIT PLAN USE IT TODAY!

master charge VISA