

Ione Gardeners plan public flower show at Ione High School

In commemoration of the Ione Garden Club's 30 years of functioning as an inspirational

and helpful organization in its community, its members and the members of the

Heppner Garden Club have planned a public flower show and silver tea at Ione High

School on Sunday, September 23. Show committees have been

named by the two club presidents, Delta Huber, Ione, and Eva Griffith, Heppner,

and they have been meeting and working on detailed plans for the event with guidance

from the Oregon State Federation of Garden Clubs. It is hoped that this show will draw

many entries in its various divisions so that it will qualify for a national federation award.

Helen Martin, Ione, and Jane Rawlins, Heppner, are co-chairmen for the event. The Schedule Committee members include chairman, Delta Huber, Pat Pettyjohn, Helen Martin, Loree Hubbard from Ione and Jane Rawlins, Alberta Johannes, Irene Swanson, Justine Weatherford from Heppner.

Publicity persons are Justine Weatherford, Jean Nelson and Joyce and Charles Buchanan. The Staging Committee Chairman Pat Pettyjohn will be assisted by Nancy Miller, Loree Hubbard, Joyce Buchanan, Barbara James and Jane and Bill Rawlins.

Helen Martin and Loree Hubbard will make arrangements for judges. Delta Huber and Eva Griffith will handle awards. The Junior Division of the show will be chaired by Delta Huber and her committee members are Pat Pettyjohn, Jean Nelson, Alberta Johannes and Eva Griffith.

The entries and classification committee includes: Chairman Jean Nelson and Delpha Jones, Babe Haris, Alberta Johannes, Adele La-Trace and Bill Rawlins. Placement will be directed by Loraine Ladd assisted by Norma Rea, Ruth McCabe and Ellen Campbell. Clerks for the show are Barbara James, Loraine Ladd, Pat Pettyjohn and Jane Rawlins.

Recommended Division (Exhibits) will be under the direction of Jean Nelson. Loraine Ladd and Barbara James will work with commercial exhibits; Theta Lowe will supervise educational exhibits and exhibits by other community organizations. A special exhibit of Ione Garden Club History will be prepared by Delta Huber, Helen Martin and Pat Pettyjohn. Jean Nelson will arrange photos of former members of the Ione Club. Helen Martin will present a series of colored slides about the club.

The show's Hospitality Committee will include the Silver Tea committee of Theta Lowe, Norma Rea and Leila Palmer, and the Guest Book and Greeting Committee of Edith Nicholson, Eleanor Gonty, Irene Padberg, Jean Nelson and Bill Rawlins.

The Clean-Up committee will include everyone from the two clubs working under the direction of the members of the Staging Committee.

September 7th, 8th And 9th

WE PRODUCE!

GOLD-N-SOFT MARGARINE



POUND TUB
EASY TO SPREAD

57¢

WESTERN FAMILY VEGETABLES

CUT CORN, PEAS, PEAS & CARROTS
OR MIXED VEGETABLES



10-OZ. **4\$1** FOR

CHICKEN OF THE SEA CHUNK LIGHT TUNA

OIL OR WATER PACK



6 1/2-OZ. SIZE

69¢

BRAWNY TOWELS

2-PLY, DESIGNER,
ASSORTED COLORS



100 SQ. FT. SINGLE ROLL

55¢

TASTEWELL

PEANUT BUTTER

CREAMY OR CRUNCHY

\$15.9

36-OZ. SIZE

THRIFTWAY EXTRA VALUES

- U & I GRANULATED SUGAR** 10-lb. Bag **\$2.29**
- KRUSTEAZ PANCAKE MIX** Buttermilk or Whole Wheat & Honey, 56-oz. **\$1.19**
- IMITATION MAPLE SYRUP** Western Family, 47-oz. **\$1.29**
- MJB GROUND COFFEE** Regular, Automatic Drip or Electric Perk, 3-lb. Size ... **\$8.89**
- GOLD MEDAL FLOUR** 10-lb. Bag **\$1.79**
- WESSON OIL** 48-oz. Size **\$2.19**
- WESTERN FAMILY PRESERVES** Strawberry, 18-oz. Size **89¢**
- WESTERN FAMILY PUDDING** Assorted Flavors, 4/5-oz. **89¢**
- POST SUPER SUGAR CRISP CEREAL** 18-oz. Pkg. **\$1.19**
- PAMPERS TODDLER DIAPERS** Pkg. of 12 **\$1.79**

BAKERY TREATS

SHUR-FRESH GIANT PULLMAN BREAD

WHITE OR WHEAT, 30-OZ. LOAF
YOUR CHOICE

69¢

SHUR-FRESH FRENCH BREAD

REGULAR OR DUTCH CRUNCH, 15-OZ.

2 FOR 99¢

SHUR-FRESH 2-INCH DONUTS

PLAIN, POWDERED OR CRUNCH

\$1.29
PKG. OF 12

FROZEN FOODS



BANQUET COOKIN' BAG

ASSORTED VARIETIES
5-OZ. SIZE

35¢

BIRDSEYE AWAKE

12-oz. Size

49¢

EGGO FROZEN WAFFLES

17-oz. Size

99¢

WESTERN FAMILY

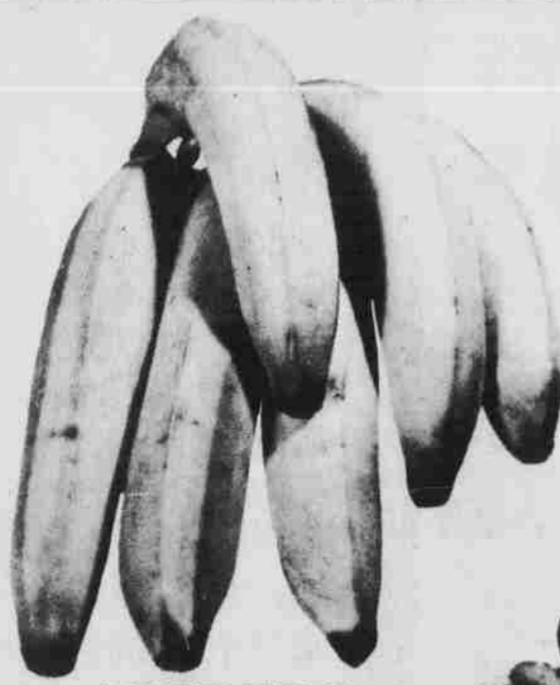
TATERS

32-OZ. SIZE

69¢

HIRE US - WE PRODUCE

U.S. NO. 1 BANANAS



JUST THE THING FOR SCHOOL LUNCHES

29 LB.

ICEBERG LETTUCE

LARGE CRISP HEADS

3\$1 FOR



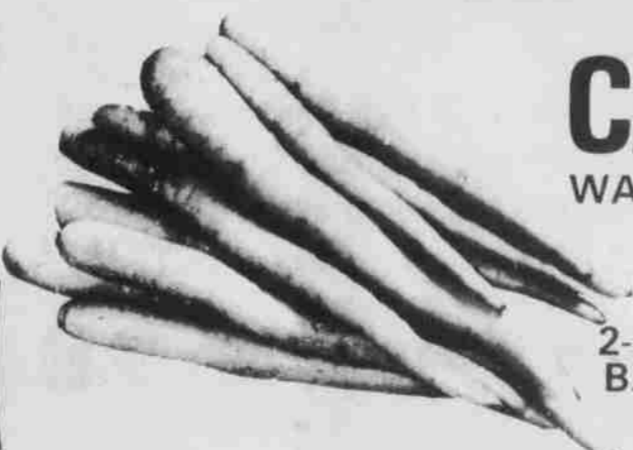
FANCY ELBERTA PEACHES

WASHINGTON GROWN

33¢ BOX \$6.98
LB.

CARROTS

WASHINGTON GROWN



39¢
2-LB. BAG

- LARGE HASS AVOCADOS** From California ea. **59¢**
- LARGE FANCY CELERY** Stalk ea. **39¢**
- FRUIT LEATHERS** Assorted flavors ea. **3 for 89¢**

Bellamy named to committee

State Rep. Billy Bellamy, R-Culver, has been appointed to the House of Representatives Interim Committee on Education and will be vice-chairman of the Committee on Environment and Energy.

"Billy served on both of these committees during the regular session of the Legislature and did an outstanding job," said Rep. Gary Wilhelms, the Republican leader in the House who made the appointments. "His knowledge and expertise will be important in directing the activities of these two committees."

Bellamy is one of only three freshmen legislators who will serve in a leadership capacity on the Legislature's interim committees.

"I think the fact that Billy is one of a very few freshmen chosen to be a vice-chairman shows a great deal of the respect he earned during his first session in the House," Wilhelms said.

The interim committees will study possible legislation to be introduced in the 1981 session of the Oregon Legislature.

