

Forest Service releases timber resource plan for decade of forests

A Timber Resource Plan Draft Environmental Statement (DES) proposing a timber management program for the Umatilla National Forest for the next ten years was made public and transmitted to the Environmental Protection Agency, August 31, 1979, according to H.B. Rudolph, Forest Supervisor.

The existing Timber Resource Management Plan went into effect in 1962, and has been amended by the Regional Forester.

The Timber Resource Plan DES describes four management alternatives and presents an environmental assessment and comparison of the effects of implementation for each alternative.

The Forest Service preferred alternative provides for a programmed harvest level of 181.5 million board feet (149.1 million board feet of ponderosa pine and associated species and 32.4 million board feet of lodgepole pine). Implementation of the plan which will not occur before October 1, 1980, will mean that the Umatilla's programmed annual harvest level may be increased by 33 million board feet. This increase will be phased in over the next ten years, as funding and personnel become available.

The Forest Service is asking the public to review and comment on the Timber Resource Plan DES. Public comments should be sent to the Forest Supervisor, Umatilla National Forest, 2517 SW Hailey Avenue, Pendleton, OR 97801. They must be received not later than October 30, 1979.

"We will hold a series of open houses next month, to provide an opportunity for the public to discuss aspects of the Timber Resource Plan DES with Forest Service resource staff on a person-to-person basis," Rudolph said. "Dates and locations of the open houses will be announced later. The public's comments and suggestions about the

Timber Resource Plan DES are very important part of the planning process," Rudolph

said. The DES may be reviewed during working hours at

Forest Service Ranger Stations at Dale, Heppner, Pomeroy, Ukiah, and Walla Walla;

and at the Supervisor's Office in Pendleton. A limited number of copies are available on

a short-term loan basis from those offices. Reference copies have been

placed in main public libraries in Clarkston, Pomeroy and Walla Walla, Washington;

Canyon City, Enterprise, La Grande, Milton-Freewater, Pendleton, and Union

Boardman Harvest Festival

THRIFTWAY

HIRE US —

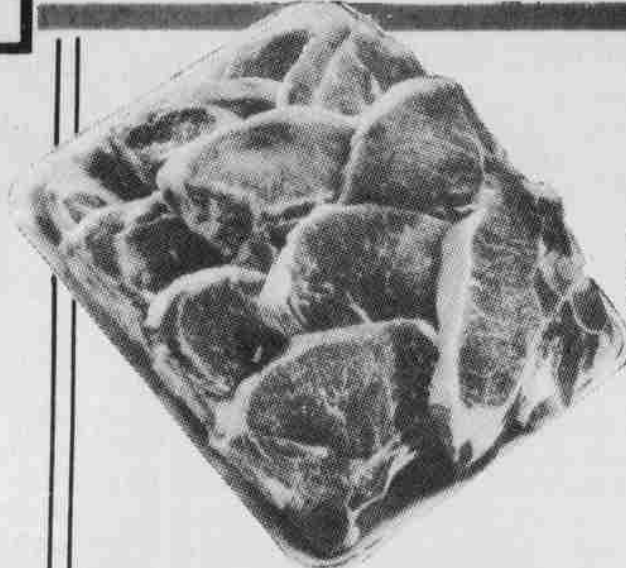
OUR PRODUCE IS AGREEABLE



TURKEY HINDQUARTERS

USDA INSPECTED, FROZEN, 4 TO 5-LB. AVERAGE

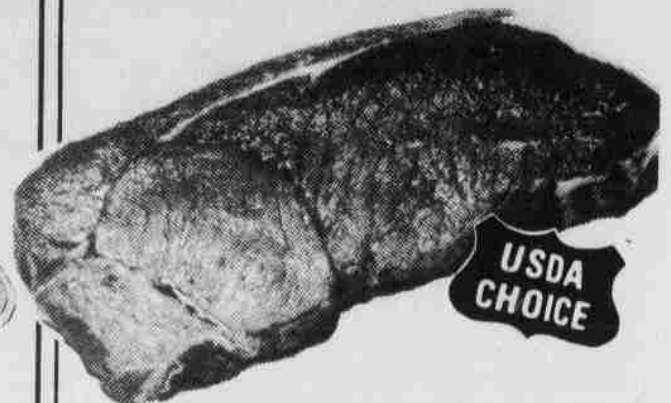
49¢
LB.



QUARTER PORK LOIN

SLICED CHOPS & STEAKS, MIXED, CUT FROM 17 TO 20-LB. ARMOUR'S VERIBEST LOINS

\$ 1²⁹
LB.



BEEF TOP OR BOTTOM ROUND STEAK

BONELESS, USDA CHOICE BEEF

\$ 2¹⁹
LB.

When you shop Thriftway for produce, it's almost like having a garden in your own backyard. And once you taste our fine fruits and vegetables, you'll know why. They all have that just-picked flavor that comes from being really fresh!
Hire us to produce... we're a member of Associated Grocers!

PATTI JEAN GAME HENS USDA Inspected, Frozen lb. **89¢**
USDA CHOICE BEEF BOTTOM ROUND ROAST LB. **\$ 1.98**
FRESH LEAN GROUND BEEF 100% Beef lb. **\$ 1.69**

CURE 81 BONELESS HAM HALVES 3 to 4-lb. Average lb. **\$ 2.49**
WESTERN FAMILY JUMBO BOLOGNA By the Piece, Slice Your Own & Save lb. **\$ 1.29**
DIANE'S FLOUR TORTILLAS 20-oz., 10-Pack ea. **89¢**

RICH'S TURKEY HAM OR TURKEY PASTRAMI By the Piece, 1 1/2 to 2-lb. Average lb. **\$ 1.98**

PRICES EFFECTIVE 7 FULL DAYS SEPTEMBER 5 THRU SEPTEMBER 11, 1979

WE RESERVE THE RIGHT TO LIMIT QUANTITIES



FRYER 'N HALF

WASH. GROWN, DAYS FRESHER **79¢** LB.

DELI SPECIALS

ALL MEAT OR BEEF BAR-S FRANKS lb. **\$ 1.39**
ARMOUR STAR SLICED LUNCH MEATS Bologna or Salami, 12-oz. Pkg. ea. **\$ 1.19**
GOOD ANYTIME, 12-OZ. PKG. ARMOUR'S SMOKIES ea. **\$ 1.49**
ARMOUR STAR SLICED BACON No. 1 Quality, Full Pound ea. **\$ 1.29**

TURKEY WIENERS

JENNIE-O, 12-OZ. PACKAGE **59¢** EA.

ADDITIONAL SAVINGS

TUNA TWIST Cheddar Cheese, Italian or Onion, 1.9 to 2-oz. 59¢
BETTY CROCKER MASHED POTATO BUDS 16.5-oz. 99¢
HUNGRY JACK BISCUITS Butter, Buttermilk or Flaky, 10-oz. 2 for 89¢
MAXWELL HOUSE INSTANT COFFEE 10-oz. Size \$ 4.49
PILLSBURY PLUS CAKE MIXES Assorted Flavors, 18 1/2 to 20 1/2-oz. 83¢
WESTERN SHORES PLASTIC WRAP 200-Ft. Roll 79¢
9 LIVES DRY CAT FOOD Liver & Chicken or Tuna & Egg, 4-lbs. \$ 1.69

EXTRA CLEANING VALUES

BOUNCE FABRIC SOFTENER SHEETS PKG. OF 60 **\$ 2.69**
IVORY LIQUID DISHWASHING DETERGENT 32-OZ. **\$ 1.39**
WISK HEAVY DUTY LIQUID DETERGENT 64-oz. Size \$ 2.59
CONCENTRATED ALL LAUNDRY DETERGENT 20-lb. Size \$ 7.99
DIAL BAR SOAP, FAMILY SIZE 7-oz. Size 59¢

DAIRY-DELI SPECIALS



DARIGOLD ICE CREAM ASSORTED FLAVORS, HALF GALLON **\$ 1.29**



WESTERN FAMILY SLICED CHEESE AMERICAN, INDIVIDUAL WRAPPED, 12-OZ. PKG. **\$ 1.19**

DARIGOLD BUTTER Quarters, 1-lb. Pkg. \$ 1.57

IMO SOUR DRESSING 16-oz. 49¢

THRIFTWAY BACK-TO-SCHOOL SAVINGS

ELMER'S GLUE **49¢**
CRAYOLA CRAYONS **58¢**
PEE CHEE PORTFOLIO A SCHOOL MUST **11¢**

Have a Great Day with THRIFTWAY

MEADS THRIFTWAY

NEW STORE HOURS:
Open Every Day 8 a.m. to 10 p.m.
305 S.W. 11th. Ave. (Buttercreek Hwy.), Hermiston
In The All New Sagebrush Plaza



Service district seeks students

Each fall the Umatilla Education Service District provides speech and language screening to all public school students, grades 1 (where there is a kindergarten program), 4, 7, and new students to the school district; parents—teachers—principal referrals; and students known to the U.E.S.D. to have had speech and or language problems in past years.

These students will be screened on Wednesday, Sept. 12: Heppner Elementary and Jr. High, 8:45 a.m.; Lone Elementary and Jr. High, 1 p.m.; A.C. Houghton Elementary, 8:30 a.m.; and Riverside Jr. High, 1 p.m.
Entering students (kindergarten or first grade students not seen at the pre-school clinics held in May 1979) and high school students will be screened at a later date.

Record your tax rebates

Taxpayers may want to record the amount of the income tax rebate checks they receive from the Oregon Department of Revenue. The information may be needed next spring for filing federal tax returns.

The rebates are not taxable by Oregon. However, they may be taxable income for some federal taxpayers. Those persons who itemized deductions on their 1978 federal returns and deducted the state tax paid must add the amount of the rebate back into their 1979 income.

The rebates, which amount to 9 per cent of an individual's 1979 state income tax, are part of the 1979 Oregon Legislature's tax relief plan.