

## Three vying for single BMCC board post

Three candidates will be running for the lone position up for election on the Blue Mountain Community College Board of Education, April 3.

The two Pendleton area candidates are challenging incumbent John Hansell of Hermiston. Challenging Hansell are Barbara Ann Wright and Roland Stewart, both of Pendleton.

Also on the April 3 ballot will be the college's operating budget for the 1979-80 school year. The budget to be voted on is just over \$3.9 million, an increase of 10 per cent over the current year's budget.

BMCC has no tax base, therefore the full amount must be approved by the voters in order for the college to operate.

Hansell, elected to the board in 1975, has served one four-year term. He is a partner in Hansell Brothers farming and livestock business. He has been a county resident for 32 years and is a graduate of Oregon State University.

A candidate for the board in 1977, Wright majored in communications at Linfield College for three years and also

attended Blue Mountain Community College. Currently, she delivers flowers for a local Pendleton florist.

Although a newcomer to Pendleton, Stewart feels that being new on the scene, he can offer a fresh approach on the BMCC board. Stewart is employed by the State of

Oregon Employment Division where he is the area labor economist for the five county region of Northeast Oregon. He has a degree from Willamette University, in Salem, in economics and mathematics.

"No new programs are proposed in the college budget," according to BMCC

President Ron Daniels. He indicated that the increase is necessary simply to meet inflationary price increases in salaries and operating costs.

The budget requires a levy estimated at \$1.55 per \$1,000 true cash value, an increase of 11 cents per \$1,000 over last year.

Students will be paying a larger share of the cost of their education starting next year. Tuition will go up \$12 per term, bringing the total cost for tuition and fees to \$137 per quarter. Tuition hikes are higher for out-of-district and out-of-state students, amounting to \$20 and \$224

### On-campus registration is Monday

The library at Blue Mountain Community College will be closed Friday, March 23, for spring vacation. Regular hours of the library will resume Monday, March 26.

Registration on campus for spring term classes will be March 26, with evening classes starting that day. Day classes will begin on Tuesday. The McCrae Activity Center

swimming pool and recreation facilities will reopen on campus at 6 a.m. Wednesday, March 28.

During spring vacation, the college library will be closed Saturday and Sunday, March 17 and 18. During the week of March 19-22, the library hours will be from 8 a.m. to noon and from 1 to 5 p.m.

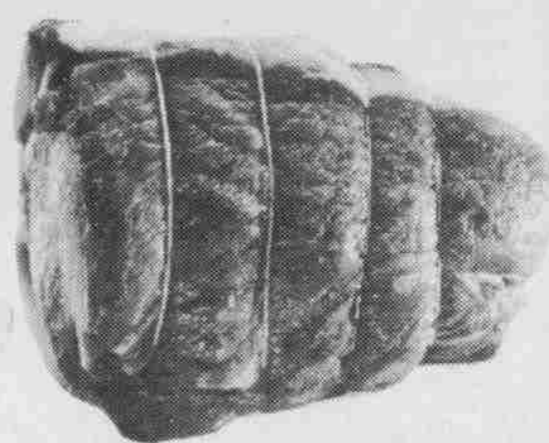
# THRIFTWAY PLAN YOUR MENU

## GREAT MEALS START WITH CHOICE MEATS!



**ROASTING CHICKEN**  
GOLD LEAF BRAND,  
5-8 LB. AVERAGE

**69¢**  
LB.



**BEEF SIRLOIN TIP ROAST**  
BONELESS,  
USDA CHOICE BEEF

**\$19.9**  
LB.



**SMOKED BONELESS HAM**  
HYGRADE,  
WATER ADDED,  
IF SLICED...lb. \$1.99

**\$17.9**  
LB.



- ARMOUR STAR SLICED BACON 1-lb. Pkg. ea. \$1.69
- DINNER FRANKS Armour Star, 2-lb. Pkg. ea. \$3.29
- KULBASSY or POLISH LINKS Armour Star... lb. \$1.99
- SMOKED HAM SLICES Western Family, Water Added... lb. \$2.09
- BEEF SPENCER STEAKS USDA Choice Beef... lb. \$3.79
- BAR-S EXTRA LEAN FRANKS 1 1/2-lb. Pkg. ea. \$2.89
- SWIFT'S SAUSAGE Brown & Serve, All Varieties, 8-oz. Pkg. ea. \$1.39
- TURKEY ROAST Swift's, All White, Light & Dark Meat, 2-lbs. \$3.39

**SEAFOOD**

<p><b>FRESH GROUND BEEF</b></p> <p>100% BEEF, SO VERSATILE</p> <p><b>\$12.9</b> LB.</p>	<p><b>FISH STICKS</b></p> <p>LIGHTLY BREADED</p> <p><b>\$1.09</b> LB.</p> <p>BIT-O-SHRIMP Quick to Fix... lb. \$1.89 RED SNAPPER FILLETS... lb. \$1.69</p>	<p><b>BEEF SIRLOIN TIP STEAK</b></p> <p>BONELESS, USDA CHOICE BEEF</p> <p><b>\$22.9</b> LB.</p>
---	--	---

**ADDITIONAL SAVINGS**

<p><b>GROUND BLACK PEPPER</b> SCHILLING, 4-OZ. SIZE <b>89¢</b></p> <p><b>HUNT'S TOMATOES</b> Whole Peeled or Stewed, 14.5-oz. 45¢</p> <p><b>HUNT'S TOMATO KETCHUP</b> 32-oz. 89¢</p> <p><b>HORMEL TENDER CHUNK</b> Chicken, Turkey or Ham, 8.75-oz. 99¢</p> <p><b>BLUE BONNET MARGARINE</b> Quarters, Lb. Pkg. 59¢</p> <p><b>PURITAN SALAD OIL</b> 32-oz. 1.59</p> <p><b>ALBA 66 HOT COCOA MIX</b> 8.75-oz. 1.29</p> <p><b>VET'S DOG FOOD</b> Assorted Varieties, 15 1/2-oz. 19¢</p>	<p><b>PLANTER'S WALNUT PIECES</b> 4-OZ. PACKAGE... <b>69¢</b></p>
--	---

**DAIRY-DELI SPECIALS**

**AA LARGE EGGS** WESTERN FAMILY BREAKFAST FAVORITE DOZEN **72¢**

**DARIGOLD MEDIUM CHEDDAR CHEESE** 2-lb. Loaf... \$3.69

**MINUTE MAID CHILLED ORANGE JUICE** 32-oz. Size... 69¢

**FRESH & FRUITY YOGURT** Assorted Flavors, 6-oz. Size... 3 for \$1

**COFFEE VALUES**

<p><b>HILLS BROTHERS COFFEE</b> Regular, Automatic Drip, Electric Perk, 3-lb. \$6.59</p> <p><b>HIGH YIELD COFFEE</b> Regular or Automatic Drip, 26-oz. \$3.99</p> <p><b>FOLGER'S FLAKED COFFEE</b> 39-oz. \$5.99</p> <p><b>SUNRISE INSTANT COFFEE</b> 8-oz. \$2.99</p>	<p><i>Have a Great Day with THRIFTWAY</i></p>
--	---

**THRIFTWAY DISCOUNT NON-FOODS**

<p><b>WONDRA SKIN CONDITIONING LOTION</b></p> <p>REGULAR OR UNSCENTED, 6-OZ. SIZE <b>99¢</b></p>	<p><b>"C" or "D" SIZE EVEREADY BATTERIES</b></p> <p>GENERAL PURPOSE 2-PACK <b>57¢</b></p>
--	---

**MEAD'S THRIFTWAY**

**NEW STORE HOURS:**  
Open Every Day 8 a.m. to 10 p.m.  
305 S.W. 11th Ave. (Buttercreek Hwy.), Hermiston  
In The All New Sagebrush Plaza

### Public Notice

In the Circuit Court of the State of Oregon for the County of Morrow Probate Department Notice to Interested Persons No. 1815 Estate of: Dean D. Teel Deceased

Probate proceedings in the estate of Dean D. Teel, deceased, are now pending in the above entitled court, wherein Helene A. Teel, the undersigned, has been appointed and has qualified as the personal representative of said estate. All persons having claims against said estate hereby are required to present them, in due form and properly verified, within four months after the date of the first publication of this notice, as stated below, to the undersigned at the following address now designated as the place for the presentation of claims, to-wit: Law Offices of Winter & Sweeney, 471 N. Main, P.O. Box 582, Heppner, Oregon 97836, or Helene A. Teel, P.O. Box 162, 200 Chase St., Heppner, Oregon 97836.

Helene A. Teel Personal Representative of the estate of the above named decedent.

Published March 15, 22, 29, 1979.

### Cemetery Notice

It has become necessary for the Board of Directors of Heppner Cemetery Maintenance District to increase the grave opening-closing to \$65.00 on weekdays and \$90.00 on Saturday, Sunday and Holidays. Effective April 1st. Elaine S. George Secretary-Treasurer.

Published March 8, 15, 22, 1979

### NOTICE OF WATER RIGHT TRANSFER APPLICATIONS

NOS. 3911, 4127 & 4128

Notice is given hereby that applications have been filed in the office of the Water Resources Director by David Cheney for approval of an additional point of diversion from Willow Creek, pursuant to the provisions of ORS 540.510 to 540.530.

The certificate recorded at page 137, Volume 1, State Record of Water Right Certificates, in the name of Sarah Ewing, describes a right for the use of water from Willow Cr. for domestic (stock use) and for the use of not to exceed 0.53 cubic foot per second of water from Willow Cr. for irrigation of 31.5 ac in SE 1/4 SW 1/4 of Sec 8, T 2N, T 2E, WM, with a date of priority of 1897. Water for this right is diverted, through the Ewing Ditch, from a point located 1160 ft S & 1000 ft W from the NE Corner of Sec 20, being

Cont. on page 9