

Split season is in effect for 1979 Oregon elk hunt

Elk hunting seasons, bear seasons, and opening dates for other major hunting seasons have been set by the Fish and Wildlife Commission.

Split seasons for both Roosevelt and Rocky Mountain elk have been set in an attempt to spread hunting pressure out and improve the hunting experience. The first Rocky Mountain elk season will be a short five days, followed after a two-day break by a nine-day second season. In western Oregon a four-day first season for Roosevelt elk will be followed after a three-day break by a seven-day second hunt.

Dates for hunting Rocky Mountain elk will be October 27 through October 31 for the first period and November 3 through November 11 for the

second hunt. The first Roosevelt elk hunt will begin November 10 and extend through November 13 and the second period will run from November 17 through November 23.

The hunter will select which season he wishes to partici-

pate in at the time he purchases his tag. There will be separate tags for Roosevelt and Rocky Mountain elk with two boxes on each for designating first or second hunt period. The hunter will select one of these four seasons and will hunt only in that season.

He could also opt for a bowhunting elk tag or might draw a tag for a controlled elk season, either of which would make him ineligible for any of the four general rifle seasons. Antler regulations, bag limits, open areas, and other elk hunting regulations will be

set in May along with other big game hunting regulations. This much of the elk hunting regulations were set early to permit ordering tags in a new format and working out details of a new system.

The opening date for general deer season this year will

be September 29. Antelope season will open on August 18 and pheasant season will begin statewide on October 13. At the request of a number of bowhunters who testified in the public hearing, opening date for deer and elk bow-

hunting seasons will be postponed until March after the state meeting of the Oregon Bowhunters.

Closing dates for these seasons and other regulations will be set later in the year when more biological data on winter survival, fawn production, nesting success, etc.,

are available. A shortened season for taking black bear was adopted to run from September through November 30. Sale of bear tags will be cut off after August 31. The 1979 season is month shorter on each end than it was in 1978.

Walton League has summer jobs for youths

Summer jobs in natural resources fields will again be available to Oregon high school seniors graduating in 1979 through a program sponsored by the Izaak Walton League. The program, now in its 16th year, is presented in cooperation with the U.S. Department of Interior, U.S. Forest Service, and the National Marine Fisheries Service.

Applicants from all over the nation will be considered within their own states for a variety of jobs on federal lands. Last year's high school graduates worked as fire guards, forestry aides, visitor center guides, wildlife observers and in other conservation-related positions. The same type of jobs will be available this year.

At least three applicants from Oregon will be nominated, according to Robert Mace, selections committee chairman. To be eligible, applicants must be high school seniors who expect to graduate in 1979, at least 18 years old by June 15, in good health and physically capable of performing field work.

Applicants should have leadership and scholastic ability and be planning a career in the natural resource fields. Young men and women are equally eligible.

Interested high school seniors should send applications to R.U. Mace, Selections Committee Chairman, P.O. Box 3503, Portland, Oregon 97208. To insure being considered by the selections committee, candidates must submit applications no later than February 23.

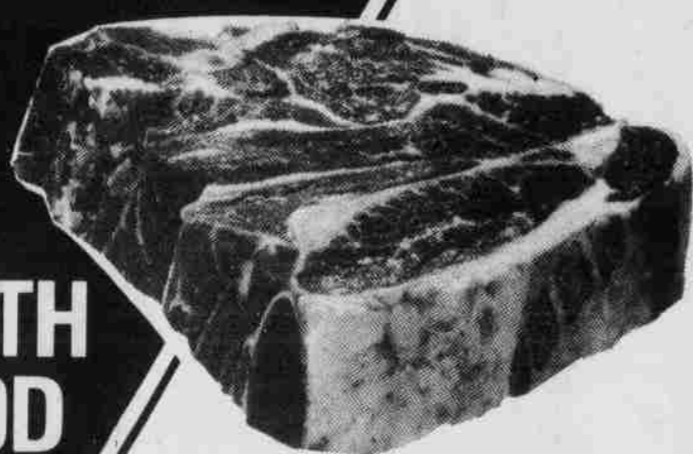
Each application should consist of the following four items: 1) a completed U.S. Government Form 171; 2) transcript of high school records; 3) written recommendation from an adult other than parent; 4) a letter from the applicant indicating college career plans, high school activities, previous conservation-oriented work performed, and the reasons for seeking employment through the program.

A copy of Form 171 may be obtained from a local Federal Job Information Center listed in the telephone directory, or call the toll-free number 800-555-1212 for the location of the nearest center.

Mr. Businessman
Your firm can save many dollars a year by having its printing done at
Gazette-Times PRINTING
Call Today
676-9228

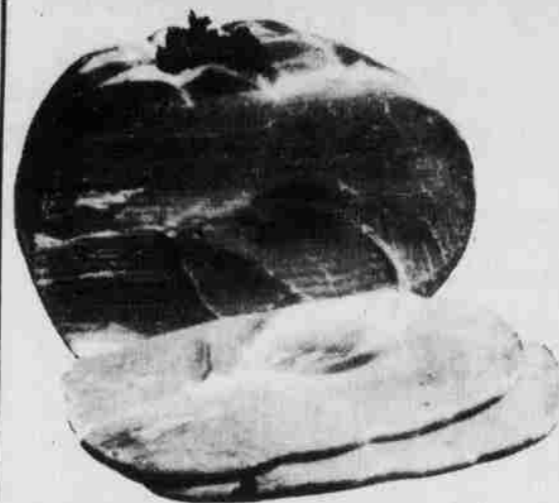
THRIFTWAY OUR SUPER 7-DAY AD

FILL YOUR FREEZER WITH FROZEN FOOD SAVINGS



BEEF BLADE CHUCK ROAST
USDA CHOICE BEEF

\$1.19
LB.



BONELESS HAMS
MORRELL, 5-7 LB. AVG., WATER ADDED

\$1.75
LB.



BONELESS TURKEY
ARMOUR, 3-7 LB. AVERAGE

\$13.9
LB.

- LEAN CUBES
- BEEF STEW MEAT USDA Choice lb. **\$1.89**
- ARMOUR SPEEDI CUT
- HALF HAMS lb. **\$1.98**
- FRESH GRADE A
- FRYER BREAST lb. **\$1.69**
- ARMOUR SLICED BACON Pan Size, 12-oz. Pkg. ea. **\$1.39**
- ARMOUR DINNER FRANKS 2-lb. Pkg. ea. **\$3.39**
- ROUND BONE
- BEEF CHUCK ROAST USDA Choice lb. **\$1.49**

PRICES EFFECTIVE 7 FULL DAYS JANUARY 31 THRU FEBRUARY 6, 1979
WE RESERVE THE RIGHT TO LIMIT QUANTITIES



<p>FRESH LEAN GROUND BEEF</p> <p>\$14.9</p> <p>100% BEEF</p> <p>LB.</p>	<p>SEAFOOD</p> <p>LOBSTER TAILS</p> <p>6-8 OZ. SIZE, FOR THAT SPECIAL DINNER LB. \$7.98</p> <p>RED SALMON FILLETS Has Been Frozen lb. \$3.99</p> <p>PACIFIC PERCH FILLETS Has Been Frozen lb. \$1.59</p>	<p>BEEF CROSS RIB ROAST</p> <p>\$18.9</p> <p>BONELESS USDA CHOICE BEEF</p> <p>LB.</p>
---------------------------------------------------------------------------------------	---------------------------------------------------------------------------------------------------------------------------------------------------------------------------------------------------------------------------------------------------------	-----------------------------------------------------------------------------------------------------

- ADDITIONAL SAVINGS**
- BLUE BONNET MARGARINE Quarters, 1-lb. **59¢**
 - LIPTON LITE LUNCH Assorted Flavors, Pkg. of 12 **63¢**
 - GOLD MEDAL FLOUR 25-lb. Bag **\$3.69**
 - MAXWELL HOUSE COFFEE Regular or ADC, 3-lb. Size **\$6.99**
 - MAXWELL HOUSE COFFEE Instant, 10-oz. Size **\$4.19**
 - JOHNSON TODDLER DIAPERS Disposable, Pkg. of 12 **\$1.89**
 - 9-LIVES CAT FOOD Canned, Assorted Flavors, 6-6.5 oz. **4 for \$1**

- EXTRA CLEANING VALUES**
- COLD POWER DETERGENT** Powder, 5-lbs. 4-oz. **\$2.25**
 - NORTHERN 2-PLY 100-SQ. FT. **69¢**
 - BRAWNY PAPER TOWELS Roll **69¢**
 - WISK LAUNDRY DETERGENT Heavy Duty Liquid, 128-oz. Size **\$5.19**
 - FINAL TOUCH FABRIC SOFTENER 33-oz. Size **89¢**
 - CARESS BATH SOAP 4.75-oz. Size **43¢**

Have a Great Day with THRIFTWAY



Hermiston
305 S.W. 11th. Ave.

MEAD'S THRIFTWAY

UMATILLA
711 "H" Street



DAIRY-DELI SPECIALS

DARIGOLD YOGURT
ASSORTED FLAVORS
LOW FAT YOGURT IS JUST THE FOOD FOR YOUR NEW YEAR'S DIET. 8-OZ. SIZE, YOUR CHOICE

5 \$1 FOR 1

DARIGOLD GOURMET ICE CREAM Assorted Flavors, 1/2 Gal. **\$2.09**

DARIGOLD BUTTERMILK Half Gallon **79¢**

WESTERN FAMILY CREAM CHEESE 8-oz. Pkg. **63¢**

THRIFTWAY DISCOUNT NON-FOODS

CREST TOOTHPASTE
REGULAR OR MINT
NEW BETTER TASTING, YOUR CHOICE, 5-OZ. TUBE **89¢**

NO NONSENSE KNEE HIGHS Assorted Colors, Pkg. of 2 Pair **99¢**