

FHA loans are available to rural communities

Ken W. Durrell, supervisor of the Farmers Home Administration office at Pendleton has announced that funds are available to rural communities to finance such essential community facilities as fire and rescue equipment, fire halls, community buildings, medical clinics, streets, recreation facilities and other facilities that improve the quality of rural community living. The loans are available for periods of up to 40 years at an interest rate to the community of five per cent.

"These loans," Durrell said, "are made available under

the provisions of the Rural Development Act of 1972 which provides some \$250 million funding annually. Approximately \$2 1/2 million of that amount is available to Oregon rural communities. Rural communities are those communities having populations not over 10,000 persons."

Communities interested in finding out more about Community Facility loans may contact Durrell at Pendleton for additional information or application forms. The address of Farmers Home Administration in Pendleton is 1229 S.E. Third. The telephone no. is 276-3811 ext. 438.

BMCC to host free Christmas dinner program

No special plans for the Christmas holidays? How about a special dinner with all the trimmings, holiday entertainment and even a visit from Santa?

That will be the scene at the Christmas eve dinner to be held in the college union in Pioneer Hall. Sponsor of the evening is the student body of Blue Mountain Community College.

The dinner is put on for the elderly, the poor and those

who would just enjoy a Christmas celebration with others. There is no cost for the dinner.

Menu for the evening includes turkey, dressing, mashed potatoes, gravy, green beans, salads, rolls, cranberry sauce and pies. The meal will be served from 5:30 to 7 p.m.

Transportation to the college will be provided. Call the college at 276-1260, ext. 226 if

you need a ride.

A short movie, Christmas Cartoon Festival, will be shown in the Pioneer Hall

Theatre that evening. There will also be group singing. Santa will have presents for all.

"You do not need a specific invitation to come and bring family and friends to the dinner," according to Gene Ann McLean, BMCC student activities director.

BLM studies area sites for wilderness

The Bureau of Land Management has found one central Oregon area worthy of further study for wilderness designation and another apparently unworthy, according to a draft inventory of BLM-managed land along the proposed route of a natural gas pipeline through central Oregon.

BLM's Oregon State Director Muri W. Storms has asked for review of the inventory in a public comment period ending Jan. 21, after which he will announce his decision regarding further study.

Storms has scheduled informational meetings in Portland Dec. 19 at 1 p.m. and 7 p.m. at BLM's Oregon State Office, 729 NE Oregon St., Room 15; and in BLM's Prineville District Office, 185 E 4th St., Dec. 20 at 1 p.m. and 7 p.m.

Inventory Unit OR-5-1, recommended for wilderness study in the preliminary finding, is located along the John Day river, 17 miles west of Condon in Sherman and Gilliam counties. It contains 9,740 acres of public land, mostly steep canyons and draws draining into the John Day river. Ridgetops are about 1,700 feet above the river.

Bonuses now available in Oregon Guard

Many Oregon Army National Guard units will be able to offer enlistment and retention bonuses and educational benefits to its members and enlistees effective this week, according to Department of the Army spokesmen.

"Guard strength is bound to increase in Oregon," states Major Jim Newton, Oregon Recruiting and Retention Officer, "as a result of these incentives."

According to Newton, qualified non-prior service high school graduates will have the choice of two options. The first is accepting a \$1,500 bonus for a six-year enlistment. Half of the money would be paid after completion of basic training, and the remainder would be paid at certain intervals during the next four years. The second option would be that of receiving up to \$2,000 in educational benefits, to be given in a four-year increment of \$500 dollars each for attendance at an accredited institution or a recognized trade, technical or vocational school.

Present members of the Guard in designated units will be eligible for reenlistment bonuses. A bonus of \$1,800 has been authorized for a six-year reenlistment, and \$900 for a three-year extension. Those eligible for the bonuses must have completed less than nine years of service.

Further information can be obtained at local National Guard armories.

THRIFTWAY TOP QUALITY



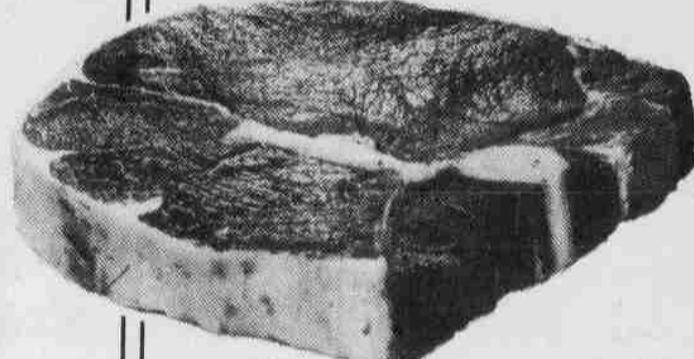
"LET OUR FAMILY SERVE YOUR FAMILY"



PORK LOIN QTR. SLICED

\$12.9
LB.

MIXED CHOPS & STEAKS



BEEF FULL CUT ROUND STEAKS

\$15.8
LB.

USDA CHOICE BEEF



VERSATILE FRESH LEAN GROUND BEEF

\$12.8
LB.

100% BEEF, PREPARED HUNDREDS OF WAYS

BEEF TOP ROUND STEAK USDA Choice Beef lb. \$2.18
BEEF CUBE STEAK USDA Choice Beef lb. \$2.09
BEEF RUMP ROAST Boneless, USDA Choice Beef lb. \$1.89
COUNTRY STYLE PORK SPARERIBS lb. \$1.49

BAR-S WIENERS Regular or Beef, 1-lb. Pkg. ea. \$1.39
LUNCH MEATS Armour's, Bologna or Salami, 12-oz. Pkg. ea. \$1.09
ARMOUR'S SLICED BACON 12-oz. Pkg. ea. \$1.19
FIREBRAND BEEF STRIPS Swift's, 12-oz. Pkg. ea. \$1.49

PRICES EFFECTIVE
DECEMBER 13
THRU DECEMBER 19
We Reserve the Right to Limit Quantities



ARMOUR'S DINNER FRANKS
\$29.9
EA.

BEEF OR ALL MEAT, 2-LB. PKG.

SEAFOOD

TURBOT FILLETS
\$14.9
LB.

HIGH IN PROTEIN, LOW IN CALORIES

BIT-O-SHRIMP Heat & Serve lb. \$1.69
HALIBUT CHEEKS lb. \$3.89

FARMLAND CANNED HAMS
\$9.49
EA.

5-LB. CAN, HOLIDAY FAVORITE

ADDITIONAL SAVINGS

SCONZA FILLED ASSORTMENT or HARD CANDY 2 1/2-lb. Size \$2.49
PRINGLES POTATO CHIPS Country Style, Regular or Extra Rippled, 8-oz. Size 89¢
DEL MONTE TOMATO CATSUP 32-oz. Size 89¢
PREPARED FOODS Chef Boy-Ar-Dae Spaghetti & Meatballs, Beef Ravioli or Mini Beef Ravioli, 40-oz. Size \$1.49
LIPTON CUP-A-SOUP Assorted Flavors, Pkg. of 4 59¢
DEL MONTE PINEAPPLE-GRAPEFRUIT DRINK 46-oz. Size 69¢
BALLARD BISCUITS Buttermilk or Sweet Milk or Pillsbury Extra Light, 7.5-oz. Size 19¢
SUNSHINE CHEEZ-ITS 16-oz. Pkg. 85¢
LITTLE FRISKIES DRY CAT FOOD Gourmet, Liver or Ocean Fish, 9-lb. Size \$3.09

DAWN DISHWASHING DETERGENT Liquid, 22-oz. Size **99¢**
TIDE LAUNDRY DETERGENT Powder, 94-oz. Size **\$2.39**
PUREX LIQUID BLEACH 128-oz. 69¢

Have a Great Day with **THRIFTWAY**



Hermiston
305 SW 11th Ave.

MEAD'S THRIFTWAY



DAIRY-DELI SPECIALS

AA LARGE EGGS

WESTERN FAMILY BUY EXTRA FOR YOUR HOLIDAY BAKING, DOZ.

68¢



DARIGOLD EGG NOG A Holiday Favorite, Quart. 65¢
KRAFT CHEESE SLICES Individually Wrapped Swiss, American or Pimento, 12-oz. \$1.39

THRIFTWAY DISCOUNT NON-FOODS

CHRISTMAS WRAP 30" LOG ROLL

TRADITIONAL, JUVENILE, OLD FASHIONED, CHARACTERS, EMBOSSED OR OLD FASHIONED FOIL

95¢

CHRISTMAS TAGS, CARDS & SEALS

JUST THE THING TO PUT THE FINAL TOUCH TO THAT SPECIAL PACKAGE

38¢

RELY TAMPONS Regular or Super, 30-Ct. **\$17.9**

