

## Wheat growers seek representative recipe

A search has started in Oregon for "a product that will be a symbol of Oregon wheat production", according to Frank Tubbs, Adams wheat farmer and chairman of the Oregon Wheat Commission.

Oregon wheat growers predominately produce a class of soft white wheat that is used for making fine pastry products such as cakes, cookies and pastry flour. About 80 percent of Oregon's wheat is exported to Asian countries where it makes various specialty products such as noodles, sponge cakes and unleavened bread products.

"In the United States," said Tubbs, "we use our Oregon wheat generally for pastry products. It is only fitting that we call our contest an 'Oregon S'Wheat Roll' contest."

Original recipes are sought, according to Mrs. Helene Holcomb, staff member of the Oregon Wheat Commission. She said that any recipe can be submitted for the contest as long as it uses wheat flour and is original.

"The recipe must be individually created," she said, "and cannot be the property of another person or firm."

Judging of the contest will be by professional home economists selected by Ivan Packard, administrator of the Oregon Wheat Commission. Recipes will be judged on creativity, good product use, practicality, texture, flavor, attractiveness, completeness and clarity.

Six finalists will be chosen and participate in a bake-off to be held in Portland. Expenses of the finalists will be paid for the bake-off. The date of the bake-off has not been announced.

Prizes for the "S'Wheat Roll" winner will be \$100 and a silver tray for the first place winner, second prize will be \$75, with third prize being \$50. Fourth, fifth and sixth prizes will be \$25.

Contest deadline is Jan. 31, 1979. Entries are to be mailed to the "S'Wheat Roll Contest", Oregon Wheat Commission, P.O. Box 400, Pendleton, Oregon 97801. Full information and contest rules are also available at the same address.

## Major Myers attending AF school

Marine Major Lonnie M. Myers, whose wife, Jacquelyn, is the daughter of Pat Brindle of Heppner, is attending the Armed Forces Staff College (AFSC).

The AFSC, located in Norfolk, Va., is operated under the direction of the Joint Chiefs of Staff. The student body is composed of selected mid-career level officers from all five U.S. military services and allied nations plus high level government executives.

A 1965 graduate of Eastern Oregon College, LaGrande, Ore., with a Bachelor of Science degree, he joined the Marine Corps in October 1965.

## Timber tax checks sent to counties

First quarter severance tax money for Eastern Oregon timber was mailed this week, with a total of \$729,620 going to counties east of the Cascades.

The first timber severance check for fiscal 1978-79 for Morrow County totaled \$26,678, according to a release from the Oregon Department of Revenue. The next disbursement will come in February. Klamath County received the largest share of first-quarter tax money, with a total of \$243,102. Wheeler County received \$30,208, and Umatilla County received \$38,902.

## Ullman touts Oregon exports

Congressman Al Ullman (D-Ore.), chairman of the Ways and Means Committee, has left Washington for economic meetings with European leaders November 27-December 1.

Ullman will discuss international monetary developments with French Prime Minister Barre and German

Chancellor Schmidt, as well as other government officials in those countries.

Ullman also will attend the Multinational Trade Negotiations (MTN) in Geneva and discuss trade developments with officials of the European Economic Community in Brussels.

The work of the Ways and

Means Committee has a major bearing on trade and international economics because of the Committee's jurisdiction over tax and tariff legislation.

"The outcome of the MTN negotiations will have a significant impact on a number of Oregon industries with a vital interest in changes in trade

policy," Ullman said, noting especially the growing importance of exports to Oregon farmers and ranchers.

While in Europe, Ullman will address the annual seminar of the American Tax Institute in Paris; the Swiss-American Chamber of Commerce in Geneva and the American Club in Brussels.

## Alena Anderson recovering from auto wreck injuries

Mrs. Erwin Anderson is feeling better but reports that she is tired of her shoulder brace and arm sling. Alena was in the Good Shepherd Hospital about a week following an automobile accident near Buttercreek Junction in which both she and her husband were injured. He has recovered from his less severe

injuries. Alena has been cared for by her daughters since she returned to her Heppner home. Daughter Dee Martin from Portland came first. Then Carol Porter came from Minneapolis to stay with her mother for two weeks. She left last Saturday just before the snow began.

# THRIFTWAY LOW COMPETITIVE

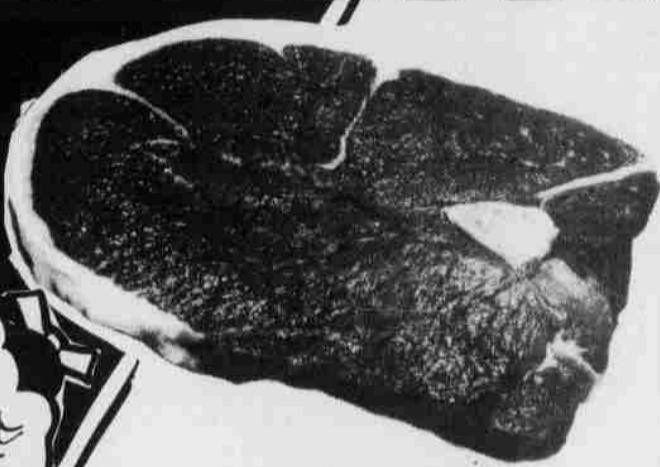


"LET OUR FAMILY SERVE YOUR FAMILY"

Check Our **PLANT SECTION!** for great savings on all House Plants!

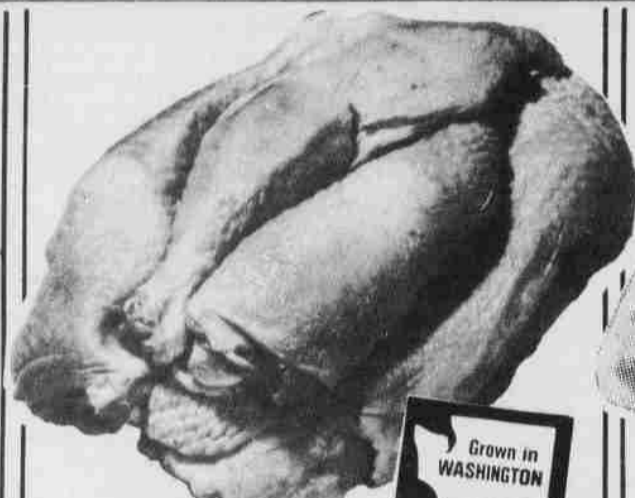
Hermiston Store Only!

PRICES EFFECTIVE NOVEMBER 29 THRU DECEMBER 5 We Reserve the Right to Limit Quantities



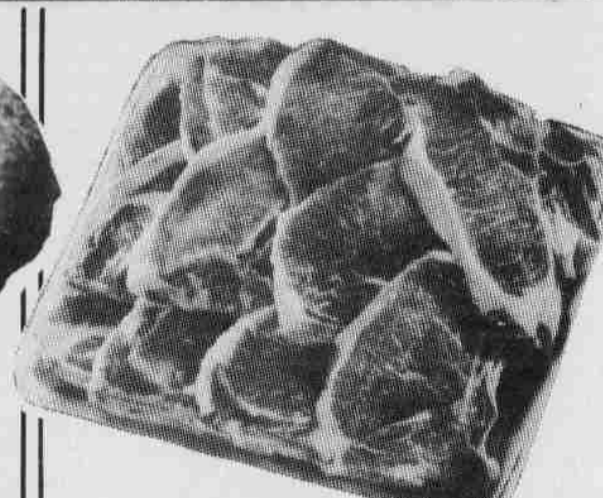
**BEEF ROUND STEAK**  
FULL CUT, USDA CHOICE

**\$13.9** LB.



**CUT-UP FRYERS**  
WASHINGTON GROWN, DAYS FRESHER

**79¢** LB.



**PORK LOIN QUARTER**

SLICED, MIXED CHOPS & STEAKS, CUT FROM 17-20 LB. LOINS

**\$12.9** LB.

- |   |  |
|---|--|
| <b>BEEF STEW MEAT</b> Lean Cubes, USDA Choice ..... lb. <b>\$1.59</b>               | <b>FRESH PORK RIB CHOPS</b> ..... lb. <b>\$1.59</b>          |
| <b>BEEF ROUND STEAK</b> Boneless, Full Cut, USDA Choice ..... lb. <b>\$1.59</b>     | <b>FRESH PORK LOIN CHOPS</b> ..... lb. <b>\$1.79</b>         |
| <b>BALL PARK FRANKS</b> Hygrade, Regular or Beef, 1-lb. Pkg. .... ea. <b>\$1.59</b> | <b>SPARERIBS</b> Pork, Country Style ..... lb. <b>\$1.39</b> |
| <b>GERMAN WIENERS</b> Morrell, Regular or Beef, 1-lb. Pkg. .... ea. <b>\$1.79</b>   | <b>HYGRADE KNOCKWURST</b> 1-lb. Pkg. .... ea. <b>\$1.69</b>  |

### SEAFOOD

**BEEF RUMP ROAST**  
BONELESS, USDA CHOICE **\$16.9**

**BIT-O-SHRIMP**  
HEAT AND EAT **\$16.9** LB.  
SCALLOPS ..... lb. \$4.49  
TURBOT FILLET ..... lb. \$1.49

**LENNON'S SLAB BACON**  
BY THE PIECE **\$10.9** LB.

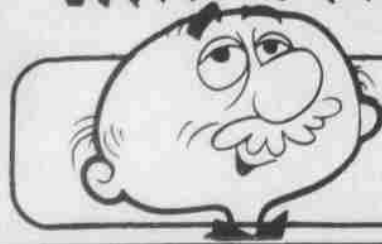
### ADDITIONAL SAVINGS

- |  |
|--|
| <b>WESTERN FAMILY MAYONNAISE</b> 32-oz. Jar ..... <b>\$1.19</b>                      |
| <b>NATURE VALLEY GRANOLA BARS</b> Assorted Varieties, 10-oz. Size ..... <b>99¢</b>   |
| <b>TASTEWELL SLICED YELLOW CLING PEACHES</b> 29-oz. Size ..... <b>59¢</b>            |
| <b>WESSON OIL</b> 38-oz. Size ..... <b>\$1.79</b>                                    |
| <b>GOLD-N-SOFT TUB MARGARINE</b> 1-lb. Tub ..... <b>67¢</b>                          |
| <b>MJB STUFFING MIX</b> Chicken or Herb-Butter Flavored, 5-oz. Size ..... <b>67¢</b> |
| <b>PURINA DRY MEOW MIX CAT FOOD</b> 3.5-lb. Size ..... <b>\$1.69</b>                 |

### EXTRA CLEANING VALUES

- |   |
|---|
| <b>TERI PAPER TOWELS</b> 59¢<br>DECORATED, 3-PLY, SINGLE ROLL, 60 SQUARE FT. .... |
| <b>JOY LIQUID</b> 22-OZ.  |
| <b>DISHWASHING DETERGENT</b> 89¢<br>DOWNY   |
| <b>FABRIC SOFTENER</b> 33-oz. .... <b>\$1.09</b>                                  |

Have a Great Day with **THRIFTWAY**



HERMISTON 305 SW 11th Ave.

**MEAD'S THRIFTWAY**

UMATILLA 711 "H" ST.



### DAIRY-DELI SPECIALS



**DARIGOLD ICE CREAM**  
ASSORTED FLAVORS, HALF GALLON **\$12.5**



- |   |
|---|
| <b>DARIGOLD EGG NOG</b> Half Gallon ..... <b>\$1.29</b>                                 |
| <b>FRESH 'N FRUITY YOGURT</b> Assorted Flavors, 6-oz. Size ..... <b>3 for 99¢</b>       |
| <b>SLICED AMERICAN CHEESE</b> Western Family, Individual, 12-oz. Pkg. ... <b>\$1.19</b> |

### THRIFTWAY DISCOUNT NON-FOODS



**CHRISTMAS WRAP**  
30-INCH LOG ROLL  
YOUR CHOICE

TRADITIONAL, JUVENILE, OLD FASHIONED, CHARACTERS, FOIL, EMBOSSED OR OLD FASHIONED

**95¢**



**BAG OF BOWS**  
ASSORTED COLORS, BAG OF 25

**38¢**