

BLEACHER SEATS



With Robb Rush

Fans—A; Halftime show—A.

What can you say about a game that ended 33-15, and together with a 30-0 drubbing of Condon by Wahtonka, gave the Heppner Mustangs the Columbia Basin Conference Championship?

Again, the final score does not tell the whole story. The Wasco County Redsidies were not out of the game by halftime, a situation that the fans and perhaps some of the players had expected. The Redsidies showed up with a group of spirited and determined players, who gave the Mustangs all they wanted in the first half.

But at the start of the second half, the Mustangs showed the stuff that champions are made of. The Zoo quickly shut off the Wasco offense and then on the Mustangs' first possession of the second half, the offense took the ball straight down the field for a touchdown. It sort of looked like the Mustangs were telling the boys from Maupin that they could score anytime they wanted.

Overall, the Mustangs did not play one of their better games. But how can you argue with the results? Besides, homecoming is more than a football game, and to play the game and be able to enjoy the post-game activities as winners and champions is most important.

The younger members of the Mustang team showed up very well during the course of the game. John Murray carried the ball exceptionally well, driving hard and following his blockers. John's last cut on his touchdown run just about screwed his would-be tackler into the ground. Doug Holland also ran hard when he carried the ball, and the kicking game remains steady.

A special bit of appreciation goes out to the second unit on offense. They stuck it out in the face of several normally drive-killing penalties to score the final touchdown. That's what I call really hanging in there and coming through.

The Bull made it on defense and right away started knocking people down (the only problem was he was still going strong after the whistle), but the penalty was one of enthusiasm.

John Strahm looks like a full-fledged member of the Zoo to me. It looked like he just knocked people down until he found the one with the ball. He plays the game as it should be, as a contact sport. For that matter, the whole team does. The Mustangs have the stuff that champions are made of.

Congratulations go out to Mr. Jim Ackley and Miss Michelle Portman for an outstanding half-time program. The new band uniforms are very sharp and should add a lot to the Mustang spirit as we move into state championship play. (Even though the Redsidies wanted a delay of game penalty because of halftime activities—they still had visions of grandeur.)

The Ione Cardinals have reached the final stage. The run and gun Cards ripped Cascade Locks and are undefeated this year, setting the stage for the big finale in Arlington Friday afternoon at 1:30 p.m. The game will be for the Big Sky crown and a spot in the state playoffs.

Some people seem to think the odds lay with the Honkers, but I don't think so. The Ione team is a very diversified unit. The Cardinals can score from anyplace on the field in a multitude of ways, and more important, each aspect of the offense is tried and tested and passed—Grade A.

The defense consists of a group of players who like to hit. They don't back off from anyone, and they also can score when they get their hands on the ball.

Perhaps the most important part of the Cardinal team is attitude. These kids are competitors—they know what it takes to win and they like it. Here's good luck to the Ione Cardinals and I hope they play "their" ball game.

WEDDING & SOCIAL STATIONERY
676-9228

Mustangs clinch CBC championship



Mustang quarterback John Bier finds running room during Friday's Homecoming victory over Wasco County. Bier averaged 5.5 yards per carry during the contest, and scored one of five Heppner touchdowns.

Homecoming '78 was an unqualified success for the Heppner Mustangs.

The Mustangs' 33-15 win over Wasco County, coupled with Wahtonka's Friday night ambush of Condon, gave Heppner the Columbia Basin Conference title.

The win over Wasco also gave Mustang head coach John Sporseen his first homecoming victory in his coaching career at Heppner.

Senior fullback Bryan Marlin put the first Mustang touchdown on the board in the first quarter, on a run from one yard out. Tailback Dennis Peck, who averaged 8.4 yards per carry in the Wasco contest, made it 13-0 for the Mustangs, on a 20 yard TD sprint.

Wasco County came back with seven points, on a 14 yard pass play from Duane Smutherman to Galan Reese followed by a conversion kick.

Sophomore quarterback John Bier scored the next Heppner touchdown, on a keeper from the two yard line. Fullback John Murray showed that Heppner's freshman class was not to be outdone in the scoring department, sprinting 28 yards for the fourth Mustang touchdown. Murray picked up 90 yards in nine carries to become the game's second leading ground gainer.

Fellow freshman Doug Holland capped off the Heppner scoring for the evening, crossing the goal line from three

yards out.

A Smutherman to Jeff Parman pass put the Redsidies on the scoreboard for the final time, but well out of reach of the Mustangs.

Mustang defenders limited Wasco County to 160 yards, compared with 245 yards in total offense for Heppner. Heppner maintained better momentum than the Redsidies, picking up 16 first downs, compared with 9 for Wasco.

The Mustang passing game was not really a factor in the Wasco victory, with Lionel Wood picking up the only completion—good for a respectable 30 yards. The Redsidies, on the other hand, gained 94 yards via air mail—accounting for more than half their total offensive yardage.

Mustang special teams
Cont. on page 10

Movin' on

More Sports

Page 7....

Candidate for Governor

REPUBLICAN

Vic Atiyeh



It's time for Atiyeh

Paid For By Morrow County Republican Central Comm., Steve Peck Chairman, Box 380 Lexington

Vic Atiyeh has supported the agricultural community of Oregon, whether it's special water bonds, farm use tax break or drought relief.

People come first for Vic Atiyeh. Almost fifteen years ago he lead the fight against mandatory retirement for senior citizens.

Vic Atiyeh has always voted against legislative pay increases. He has fought against wild increases in the state budget which has doubled in the past four years.

"Decisions must be made between the essential and the desirable services of government. A governor must lead the public discussion of priorities and must see that the essential services are delivered.

It's time for Atiyeh.

Vote Bill Bellamy

Bill Bellamy has plans to keep District 55 informed both during and after the next legislative session. But, you have to elect him as your State Representative first.

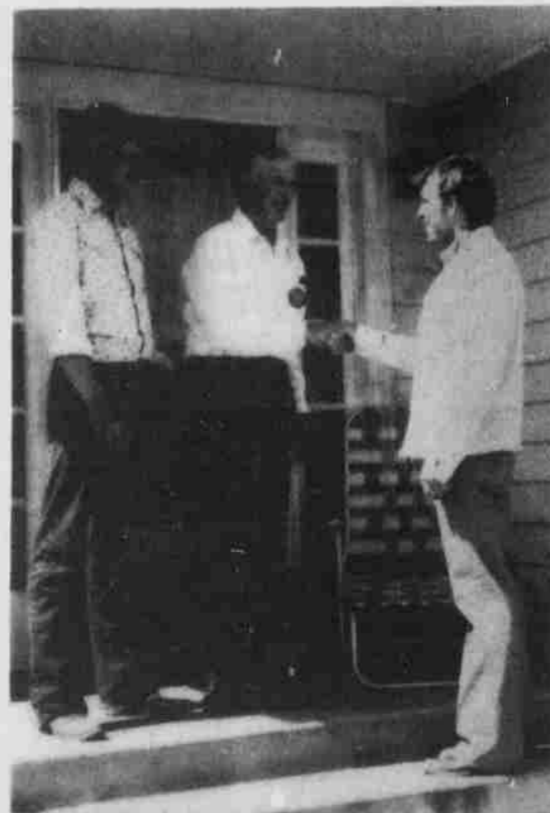
Bill Bellamy plans to correspond bi-weekly with 200 people who represent every life style of the district. He also plans to have coffees throughout the district.

Why has Bill Bellamy made these plans? Because he wanted you to have the opportunity to discuss local concerns with him.

Elect Bill Bellamy as your State Representative.

He's Available

Paid for by the committee to elect Bill Bellamy Representative, JoAnne Holcomb, chairperson. Rt. 1 Box 85c, Culver, OR 97734.



REPUBLICAN FOR STATE REPRESENTATIVE-DISTRICT 55

SNOW-TIRES

ANTI-FREEZE

CHAINS

BATTERIES

COUNTRY SQUIRE 120

- *Polyester carcass Body strength.
- *Fiberglass belts Better stability, improved mileage.
- *Full snow tread design Plows through ice, mud, and snow.
- *True 78 series Fits all wheel sizes.
- *Non-directional tread design Runs in any wheel position.
- *Tread wear indicators Shows when tires need replacement.
- *Pinned for No. 16 studs 108 per tire Maximizes traction.



SALE PRICE INCLUDES TAX

	LIST	SALE
B78 x 13 B 16 2+2 60 066-114	\$46.58	\$34.94
B78 x 14 B 16 2+2 22 066-134	47.48	35.61
E78 x 14 B 16 2+2 26 066-140	53.52	40.14
F78 x 14 B 16 2+2 27 066-142	56.50	42.38
G78 x 14 B 16 2+2 28 066-144	58.16	43.62
H78 x 14 B 17 2+2 32 066-146	61.81	46.36
F78 x 15 B 16 2+2 28 066-172	57.04	42.78
G78 x 15 B 16 2+2 30 066-174	59.41	44.56
H78 x 15 B 17 2+2 33 066-176	63.10	47.33
J78 x 15 B 17 2+2 34 066-178	66.37	49.78
L78 x 15 B 17 2+2 36 066-182	68.18	51.14

RADIAL STEEL TRACTION

- *Radial construction Improved traction, increased gas mileage. Long tread mileage with safety at high speeds.
- *Polyester/steel cord Added strength, stability and puncture resistance.
- *Pinned for No. 16 studs 108 per tire Improved driving on icy, slippery roads.
- *Aggressive open tread design Excellent traction.
- *78 series design Companion tire for O.E. steel belted radials.
- *White stripe Appearance

SALE PRICE INCLUDES TAX

	LIST	SALE
BR78 x 13 B 14 2+2 22 058-114	\$65.81	\$43.45
DR78 x 14 B 14 2+2 24	70.90	48.75
ER78 x 14 B 14 2+2 25	72.90	50.80
FR78 x 14 B 14 2+2 27	77.32	52.80
GR78 x 14 B 15 2+2 30 058-144	81.32	56.45
HR78 x 14 B 15 2+2 32 058-146	84.16	58.45
FR78 x 15 B 15 2+2 28 058-172	79.02	54.40
GR78 x 15 B 15 2+2 31 058-174	83.01	54.40
HR78 x 15 B 15 2+2 33 058-176	86.16	60.48
LR78 x 15 B 16 2+2 36 058-182	92.06	66.75



CENEX Morrow County Grain Growers INC. **HH**

989-8221
Lexington