

entative

eds Bill Bellamy



ABOVE LEFT: Bill Bellamy inspects the needles of a pine tree. Bill Bellamy knows that as the industry modernizes, its need for legislative understanding increases. Bill Bellamy has had the training to understand forestry concerns.



ABOVE RIGHT: Bill Bellamy knows agriculture is a main part of District 55's economy. Here he inspects a field of insect damage. He understands the importance of keeping agriculture productive.

Rural Voice

District 55 is the most rural representative district in the state. Neglected needs of rural people must be clearly pointed out and maintained. The district must have a strong voice representing them and Bill Bellamy has the rural background.

Small Businesses

Small businesses represent the business community in District 55. Government regulations and programs are continually placing restrictions upon them. Bill Bellamy believes there needs to be less government involvement in small business operations.

Ag & Forestry

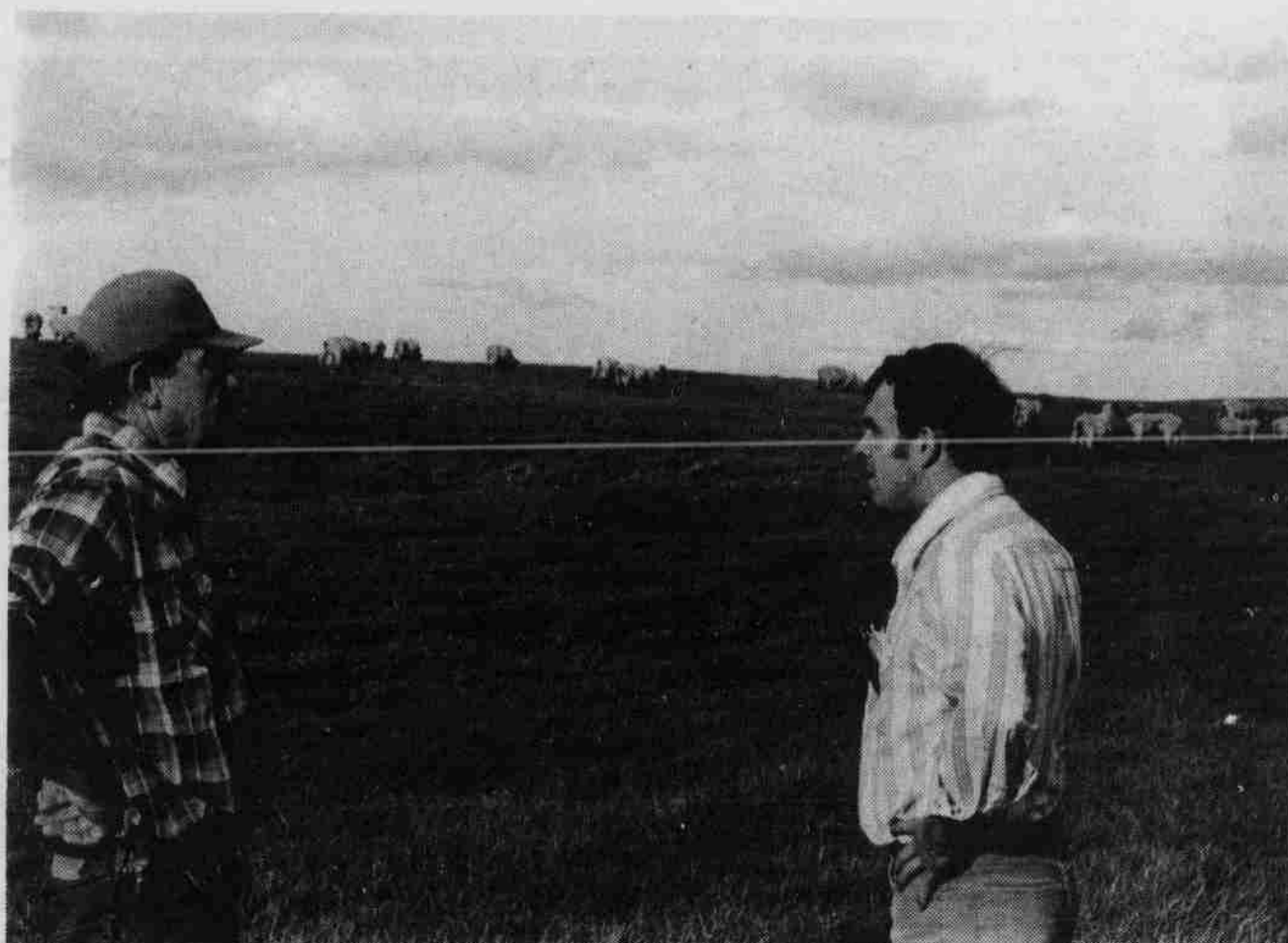
Bill Bellamy knows agriculture and forestry are the backbone of District 55's economy. Efforts must be maintained to keep these natural resources productive and viable. A representative should have a strong background and working knowledge of these two basic industries.

Roads

Roads in most areas of District 55 are in immediate need of repair and improvement. Bill Bellamy believes sufficient funds could be available, if the monies collected for the highway fund were used only for road repair and construction. If additional funds are needed, the money must go directly to road repair and improvement, not to the general fund. This money should be fiscally accounted for.

Local Control

Local control of tax dollars and programs should be maintained. The local people know what is best for their communities and programs. Bill Bellamy believes efforts should be established to give more control of programs and monies back to the local people.



ABOVE: Government continually places restrictions on small businesses. Here Bill Bellamy talks with Phil Farrell

about the effect the restrictions have on his farm-sheep ranch operation.