

# BMCC board hears student housing proposal

A proposal for student housing on the Blue Mountain Community College campus was referred to a subcommittee by the BMCC board at its regular board meeting on Oct. 18 in Umatilla.

"With current board concerns, we cannot accept the NORPA proposal as is," Jim Whitney, president of the board, explained in establishing the committee.

Board members Tim Mabry, John Hansell and Whitney will work with Jim Vickery of NORPA Development Company. The NORPA plan calls for the college to deed 3.9 acres of land to the company for phase 1 of a projected three-phase student housing project.

After returning from executive session, the board voiced concern with NORPA's request to hook on to college water and sewer lines. An engineer's study was requested by the board to avoid overloading the college's system.

The board urged the company to obtain the needed city approval on sewer and water variances. They also asked that NORPA check with the city on the shared parking proposal that would allow student residents of the housing project to use the college's north parking lot.

Whitney termed NORPA's request for an option on 15 acres as "excessive" and indicated the board would be more inclined to commit a maximum of 5 acres at this time.

The college will need state approval to release its land to NORPA. The development company currently owns 50 acres northeast of the college.

In other business, the board decided not to make a public endorsement of either ballot measure No. 6 or No. 11. The consensus of the board was that the voters already know that measure No. 6 would have an adverse impact on the college.

Ron Daniels, BMCC president pointed out two real dangers to the college if ballot measure No. 6 passes. He noted that the state undoubtedly could not reimburse the college entirely for all tax revenue lost. Secondly, he stated that tuition costs would

increase and could double from the current \$110 a term to \$220.

The board felt that in his speeches to local organizations, the president expresses the feeling of the board. Daniels acknowledged that ballot measure No. 11 is better

for the college. He also pointed out, however, that he tries to be impartial in presenting the ballot measures to the public.

The board also: —Heard a report from President Daniels on Umatilla County's buying of a church in Hermiston for office space.

The college may consider contracting some of that space for evening classroom space and for an office for the regional area coordinator.

—Read a report from Blaine Hanks, broadcasting instructor, on new FCC regulations that will affect the operation

of the college's FM radio station.

—Changed their policy with regard to designated legal depositories for college funds.

Federally chartered savings and loans may now submit interest bids as well as banks. —Contracted with Academic Financial Services

Association in Los Angeles to administer student loans for about \$3,000 a year.

—Hired Lambertina Moore, nursing instructor, and named Walt Giacomini, adult farm management instructor, to the position of assistant rodeo

coach. —OK'd salary adjustments for faculty members who took classes this summer.

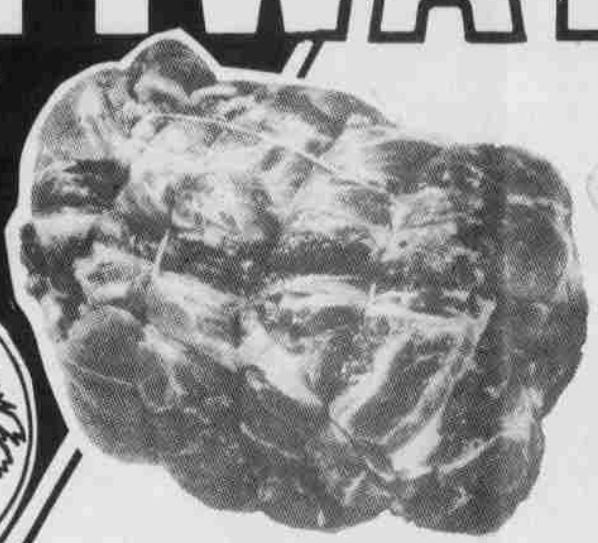
## THRIFTWAY SHOP SMART WITH

**KIDS, HURRY AND ENTER!**



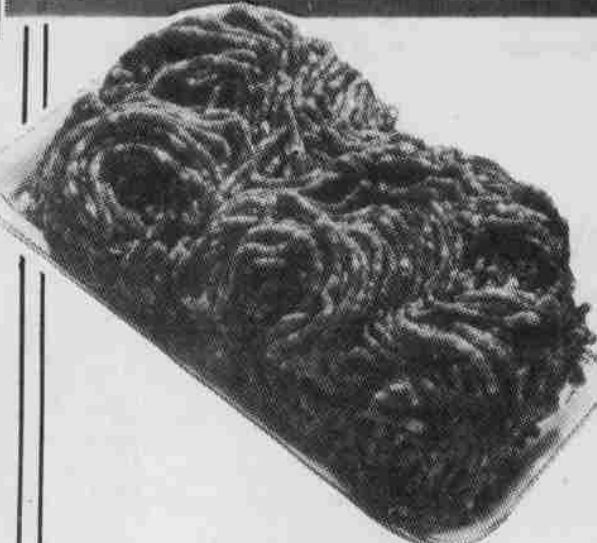
### HALLOWEEN COLORING CONTEST

Win an AM Wrist Radio as 1st prize! Plus other prizes! Any child 9 years and under is eligible to enter. Contest will be broken into 3 age groups with a winner selected from each group. Pick up a coloring contest picture and more details at any Thriftway. Entries will be judged Tuesday, October 31.



**PORK SHOULDER BUTT ROAST BONELESS**

**\$12.9**  
LB.



**LEAN GROUND BEEF 100% BEEF**

**\$11.9**  
LB.



**BEEF RIB STEAK USDA CHOICE BEEF**

**\$19.8**  
LB.

- BEEF T-BONE STEAK USDA Choice ..... lb. \$2.98
- BONELESS BEEF CHUCK STEAK USDA Choice ..... lb. \$1.59
- PORK BLADE STEAK ..... lb. \$1.39
- WESTERN FAMILY WIENERS Regular or Beef, 12-oz. Pkg. .... ea. 89¢
- SLICED BACON Western Family, 24-oz. Pkg. .... ea. \$2.29
- MORRELL GERMAN WIENERS 1-lb. Pkg. .... ea. \$1.89
- ARMOUR LUNCH MEATS Bologna or Salami, 6-oz. Pkg. .... ea. 75¢
- BRAUNSCHWEIGER Morrell, By the Piece. .... lb. 79¢

## River plans told

Cont. from page 12  
A management report concerning the lower 100 miles of the Deschutes River and management plans for three other Oregon streams were submitted recently by Fishery Division staff to the Fish and Wildlife Commission. The plans are the first so far prepared under a wild fish management policy adopted earlier this year.

The Deschutes report listed three trout management alternatives but recommended one in which most of the river would be managed for wild trout but with stocking of hatchery fish continued in several highly accessible sections. Angling regulations would continue unchanged except for an increase in the legal minimum trout size to 8 inches in areas where 6-inch fish are now permitted. This regulation change would provide additional protection for young steelhead on the spring.

The staff recommended stocking be continued at half the current rate in a 7-mile section immediately upstream from Maupin and adjacent to Highway 26 above the bridge at Warm Springs.

After the Warm Springs National Fish Hatchery becomes operational in 1980, a total return of from 9,000 to 15,000 hatchery steelhead would be expected each year. Because of an abnormally low run of steelhead expected next year, proposed regulations for 1979 call for a bag limit of just one hatchery fin-clipped steelhead and no harvest of wild steelhead. The report suggested no changes in current salmon management for now.

**PRICES EFFECTIVE OCTOBER 25 THRU OCTOBER 31, 1978**

WE RESERVE THE RIGHT TO LIMIT QUANTITIES  
WE RESERVE THE RIGHT TO LIMIT QUANTITIES



**SEAFOOD**

**BEEF RIB ROAST**  
LARGE END, USDA CHOICE  
**\$18.9**  
LB.

**FILLET OF SOLE**  
HIGH IN PROTEIN, LOW IN CALORIES  
**\$19.8**  
LB.

HALIBUT CHEEKS ..... lb. \$4.29  
SALMON TIPS Kipped. lb. \$1.29

**CURE 81 HALF HAMS**  
**\$25.9**  
HORMEL LB.

- ADDITIONAL SAVINGS**
- MARS FUN SIZE CANDY BARS Assorted Varieties, 12-16 oz. .... \$1.59
  - CORN NUTS FUN SACK Package of 25 ..... 49¢
  - PILLSBURY FLOUR 10-lb. Bag ..... \$1.59
  - STIR-N-SERVE DINNERS Golden Grain, Assorted Varieties, 7.8 1/2 oz. .... 65¢
  - FARMAN'S GENUINE PICKLES Dill or Kosher Dill, 48-oz. .... \$1.19
  - BALLARD BISCUITS Buttermilk or Sweet Milk, 7.5-oz. Size ..... 5 for \$1
  - NABISCO RITZ CRACKERS 1-lb. Pkg. .... 98¢
  - PAMPERS OVERNIGHT DIAPERS Pkg. of 12 ..... \$1.39
  - 9 LIVES CANNED CAT FOOD Assorted Varieties, 6-6.5 oz. Size ..... 4 for \$1



**DAIRY SPECIALS**

**SOOPER SCOOP ICE MILK**  
ASSORTED FLAVORS, LIGHT & DELICIOUS, HALF GALLON  
**85¢**



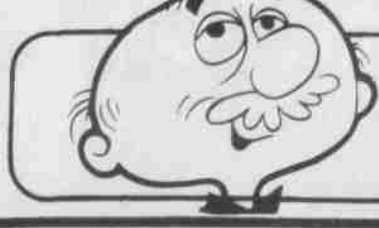
- EXTRA CLEANING VALUES**
- FRESH START POWDERED DETERGENT** 42-oz. SIZE **\$2.29**
  - TIDE POWDERED LAUNDRY DETERGENT** FAMILY SIZE, 10 LBS., 11 OZ. **\$4.79**
  - WISK LAUNDRY DETERGENT** Heavy Duty, Liquid, 128-oz. .... \$5.29

- DARIGOLD COTTAGE CHEESE Large & Small Curd, 32-oz. .... \$1.15
- DARIGOLD SOUR CREAM Pint. .... 69¢

**Have a Great Day with THRIFTWAY**

**THRIFTWAY DISCOUNT NON-FOODS**

- GLEEM FLUORIDE TOOTH PASTE** 7-OZ. SIZE **\$1.17**
- VICKS NYQUIL NIGHTTIME COLD MEDICINE** 6-OZ. SIZE **\$17.9**
- LIGHT BULBS** SOFT WHITE, FROM G.E. 60, 75 OR 100 WATT 4-BULB FAMILY PK. **\$16.9**



Hermiston  
305 SW 11th Ave.

**MEAD'S THRIFTWAY**

Umatilla  
711 "H" St.

