

Wheat League urges farmers to use 1979 farm program

The Oregon Wheat Growers League is encouraging farmers to take part in the 1979 federal farm program. "It's a 'now' program" aimed at improving prices by reducing production and establishing a reserve of grain, said Stan Timmermann, Pendleton rancher. He is chairman of the OWGL farm programs committee and past chairman of the same committee for the National Association of Wheat Growers. By not participating in the program, a farmer stands to lose eligibility for loans and deficiency and disaster payment.

The sign-up deadline for participating in the 1979 program has not been set but is expected soon, said Martin Buchanan, Spofford, chairman of the state ASCS committee which administers the federal farm program. ASCS is the Agricultural Stabilization and Conservation Service. "We've given considerable authority to county ASCS committees," Buchanan said. "The reserve program is working," he said, and Timmermann agreed. The reduction of production through the 20 percent set-aside program and the reducing of wheat available

for sale by use of the reserve has increased wheat prices, Timmermann said. Wheat in the reserve is released after three years or when wheat prices reach a trigger point, which is a national average of \$3.29. The recent national average price for wheat has been \$2.82. Timmermann said that because of the farm program, those who participated soon

will receive deficiency payments of about 50 cents per bushel of production. But only slightly more than 23 percent of Oregon wheat land came under the farm program in 1978. The wheat league wants to see this increased. "Oregon didn't help a bit" in making the national program work in 1978, Timmermann said.

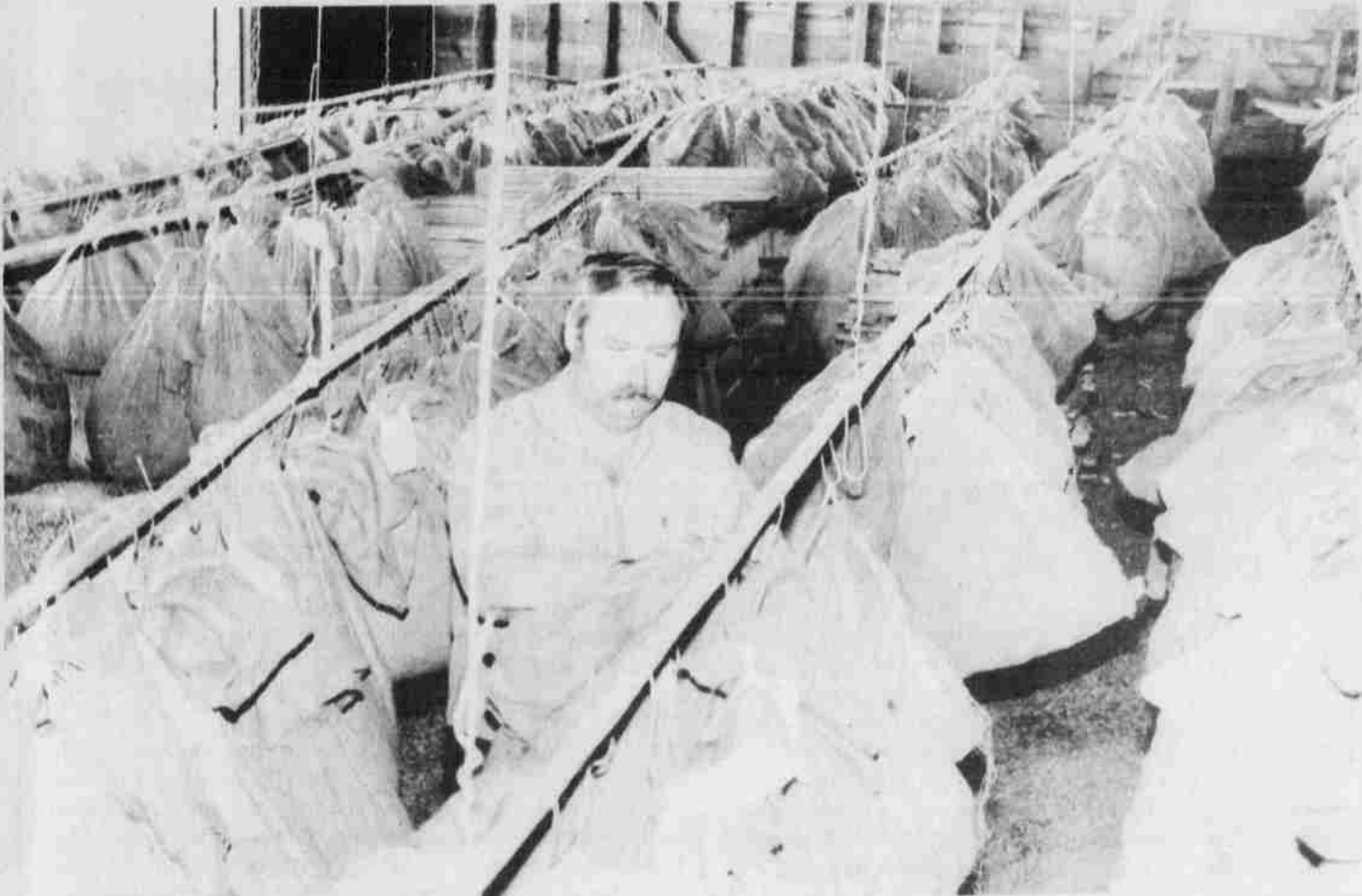
BMCC livestock team having winning year

Livestock judging teams at Blue Mountain Community College have had a very successful year so far in team competition, according to Paul Davis, judging adviser and BMCC technical agriculture instructor. On Oct. 18 the judging team took first place in overall points at the Treasure Valley Judging Contest at Treasure Valley Community College in Ontario. The judging team took first place honors in the beef, sheep, horse and swine divisions. Cheryl Bunch, BMCC student from Baker, took overall honors for high point contestant at the TVCC contest. Another first place award was won by BMCC's judging team at a Chico State University contest, October 7, in Chico, Calif. The BMCC team took first place out of 23 competing teams in carcass judging. The second BMCC team took fourth place in the same contest. The judging team is planning a trip to the Cow Palace in San Francisco for the 1978 Grand National Community

College Judging Contest, Oct. 27 and 28. Members of the BMCC judging team include: Doug Anstogui, Heppner; Glen Barrett, Klamath Falls; Cheryl Bunch, Baker; Bill Pound, Pendleton; Caryl Reid, Prineville; Kyrnn Robinson, Heppner; Paul Taylor, Canby; Sue Truscott, Baker and Hoby Wilhelm, Arlington.

Flu shots to be given

The Morrow County Health Department will be administering flu vaccine to anyone over age 26 who wants it at a cost of \$2. These flu shots will be available at the Heppner Neighborhood Center on Oct. 30 from 7 to 9 p.m. and on Nov. 8 from 3 to 4:30 p.m. Further information may be obtained by calling 989-8256.



In the bag

Heppner Ranger District Silviculturalist Charles Rouse inspects fruits of this year's bumper seed cone harvest, drying in a warehouse at the Forest Service compound in Heppner. Cones collected this year should provide seed for as many as three million new trees.

District cone collection will produce 3-million seedlings

A whopping 380 bushels of seed cones from ponderosa pine, Douglas fir, grand fir, Engelmann spruce and lodgepole pine were collected from trees in the nearby Umatilla National Forest during the Heppner Ranger District's successful cone collection program, which ended Oct. 13. Local people gathered the

seed cones from trees and squirrel caches throughout the National Forest land. Cone suppliers this year included Don and Judy Kenison and Ernest Garrison of Heppner, Richard and Irene Jones of Condon, and Charlene Papineau of Lexington. Later this fall the cones will be shipped to Bend, where the

U.S. Forest Service nursery facility there will extract seed from the cones and provide the storage. The seed will then be used to grow seedlings which will be planted in the Heppner Ranger District to reforest logged-over areas and burn sites. Heppner district officials said this year's seed cone

harvest occurred during a peak seed producing year, which occurs only once every five to ten years. This year's harvest should yield about 500 pounds of tree seed, from which 3 million seedlings can be grown.

Fed. crop insurance deadline is Oct. 31

The Federal Crop Insurance Corporation is reminding area farmers that the closing date for applying for wheat and barley insurance for 1979 is drawing near. The final date is October 31. Present policyholders are reminded that the last day changes can be made in the election price for wheat and barley for the 1978 crop year is also October 31. Farmers interested in wheat or barley

insurance or policyholders who wish to make a change in the election price should contact the Pendleton Office located at 1229 S.E. 3rd Street or telephone 276-3811 Ext. 437. The Corporation also wishes to inform wheat and barley policyholders that if harvest of the 1978 crop will not be completed by October 31, please notify the Federal Crop Insurance Office serving your area by such date.

Smouse farm up for state award

The team that will name the Oregon Wheat Growers League conservation man of the year has completed its work. The announcement of the state winner will be made at the League's convention in Portland on Dec. 5. The program honors farmers who put unusual effort and cash into preserving soil and water preventing erosion. The program is a joint effort of the wheat league and the John Deere Company. Candidate farms visited by the selection committee include those of Mike and Ken Kortage, The Dalles; Marion Weatherford, Arlington; Kenneth Smouse, Ione; Bud Schmidgall and Bob Miller, Athena; Rodney Rolfe, Grass

Valley; Grant Henderson, Summerville; Ken and Gary Harris, Madras; and Earl Kennell, Monmouth.

HUNTING SEASON

HUNTER'S SALE — 7 BIG DAYS!

<p style="text-align: center;">Guns</p> <p style="text-align: center;">Wholesale Plus 10% OFF</p> <p style="text-align: center;">Remington Winchester Savage</p>	<p style="text-align: center;">Scopes & Ammo</p> <p style="text-align: center;">Redfield Bushnell Weaver</p> <p style="text-align: center;">10%</p>
<p>Slings & Scope Rings</p> <p>Coleman Lanterns,</p> <p>Stoves & Ice Chests</p>	<p style="text-align: center;">10% OFF</p>

WE WILL TAKE TRADE-INS

Pettyjohn's

HEPPNER

SALE OCT. 27 THRU NOV. 3

676-9157

printing

676-9228

VOTE
BILL
BELLAMY

REPUBLICAN FOR STATE REPRESENTATIVE-DISTRICT 55

Bill Bellamy wants to serve you in Salem. He is concerned about rural communities. Often, their needs are not met because legislation was designed for urban areas. "When dealing with road repair, medical services and crime, provisions should be made with rural people's needs in mind," said Bill Bellamy. Senior citizens need to be productive members of our communities. "I endorse many senior citizen programs. I believe government must continue to protect them from inflation, crime and society abuses," said Bill Bellamy. Government has gotten too involved in small businesses. Government has become too inflexible. "Common sense and sound management principles need to be reestablished," said Bill Bellamy.

You need an Eastern Oregon Representative

Paid for by committee to elect Bill Bellamy Representative, JoAnne Holcomb Chairman, Rt 1 Box 85C Culver, Or.

GET READY NOW! WINTERS' COMING

COUNTRY SQUIRE 120

- *Polyester carcass Body strength.
- *Fiberglass belts Better stability, improved mileage.
- *Full snow tread design Plows through ice, mud, and snow.
- *True 78 series Fits all wheel sizes.
- *Non-directional tread design Runs in any wheel position.
- *Tread wear indicators Shows when tires need replacement.
- *Pinned for No. 16 studs Maximizes traction. 108 per tire

					LIST	SALE
B78 x 13	B	16	2+2	60	066-114	\$46.58
B78 x 14	B	16	2+2	22	066-134	47.48
E78 x 14	B	16	2+2	26	066-140	53.52
F78 x 14	B	16	2+2	27	066-142	56.50
G78 x 14	B	16	2+2	28	066-144	58.16
H78 x 14	B	17	2+2	32	066-146	61.81
F78 x 15	B	16	2+2	28	066-172	57.04
G78 x 15	B	16	2+2	30	066-174	59.41
H78 x 15	B	17	2+2	33	066-176	63.10
J78 x 15	B	17	2+2	34	066-178	66.37
L78 x 15	B	17	2+2	36	066-182	68.18

SALE PRICE INCLUDES TAX

RADIAL STEEL TRACTION

- *Radial construction Improved traction, increased gas mileage. Long tread mileage with safety at high speeds.
- *Polyester/steel cord Added strength, stability and puncture resistance.
- *Pinned for No. 16 studs Improved driving on icy, slippery roads. 108 per tire
- *Aggressive open tread design Excellent traction.
- *78 series design Companion tire for O.E. steel belted radials.
- *White stripe Appearance

					LIST	SALE
BR78 x 13	B	14	2+2	22	058-114	\$65.81
DR78 x 14	B	14	2+2	24		70.90
ER78 x 14	B	14	2+2	25		72.90
FR78 x 14	B	14	2+2	27		77.32
GR78 x 14	B	15	2+2	30	058-144	81.32
HR78 x 14	B	15	2+2	32	058-146	84.16
FR78 x 15	B	15	2+2	28	058-172	79.02
GR78 x 15	B	15	2+2	31	058-174	83.01
HR78 x 15	B	15	2+2	33	058-176	86.16
LR78 x 15	B	16	2+2	36	058-182	92.06

SALE PRICE INCLUDES TAX

Morrow County Grain Growers INC.

989-8221 Lexington