

Kinzua news

Barbara Pike 768-2861

The Camp Five Womens Club held a pinochle party at the Camp Five Hall Saturday April 15. Hostesses for the evening were Betty Murdock and Pat Van Arsdale.

At the end of a fun evening of cards the winners of the various prizes were announced. Susan McClain was the winner of the door prize. Men's high went to Don Culver

and Karen Cossitt was the Women's High winner. Low winners were Roger Mortimer for the men and Alice Milton for the women. Pinochles were won by Bonnie Campbell and Ron Gilley. Jim Nickelsen was back in town Friday and Saturday to help Billie Lou and the children finish getting packed and ready to move. The family is now making their home in Tillamook.

Dan and Sharon Bell and children Jeannette and John arrived Thursday to spend a long weekend in Kinzua with Sharon's mother Virginia Kelso. The Bells returned home to Prineville early Sunday. Troy and Molly Day and children Curt and Lorri went to The Dalles on business Saturday. Also in The Dalles Saturday was Don and Bruce Pike.

Deena Reid and daughter Deltina went to Hermiston Tuesday to keep an orthodontist appointment. Thursday Deena and Lana were in The Dalles where they had medical care. Don and Rose Hardwick are two of the busiest people in our little community, Tuesday they were in John Day and Thursday in Prineville to take care of some business. Gladys Jewell and Loretta

Johnson went to Heppner Friday for dental care. Cindy Bowman joined the ice cream eaters club Friday when she had her tonsils removed at St. Charles Hospital in Bend. She is out of the hospital and she and her mother Rita are guests at the David Riney home in Prineville.

Senior Menu

Tuesday, April 25
Pot-roast and vegetables
Lettuce wedges with French dressing
French bread with garlic butter
Pineapple upside down cake & topping

Wednesday, April 26
Hamburger and bulgar bake

with taco topping
Mashed potatoes
Molded fruit salad
Biscuits & jelly
Butterscotch pudding with topping & cookies
Tuesdays—Heppner
Wednesdays—Heppner & lone
Coffee, tea, and milk served with all meals.

Federal incentive payments for wool increase

Oregon sheep growers will receive about \$657,147 in federal incentive payments on their 1977 marketings of shorn wool, while nationally, the wool incentive payments will total about \$25 million. This compares with \$7 million in payments made for 1976 marketings.

Payments for 1977 marketings will be sharply higher than for 1976 because the support price for shorn wool was increased from 72 to 99 cents per pound by the Food and Agriculture Act of 1977. The support level had been 72 cents a pound since 1970.

The 1977 national average market price for shorn wool was 72 cent per pound, 27 cents under the support price. Therefore, the payment rate for 1977 marketings of shorn wool—the amount required to bring the average price up to the incentive price—will be 37.5 per cent, compared to 9.6 per cent in 1976. At the 72 cents a pound support price, there would have been no payments, in 1977 marketings of shorn wool.

The wool program is intended to encourage a grower to improve the quality of wool with a grower's incentive payment determined by multiplying the payment rate times the net dollar return received from sale of the wool.

The payment rate will be \$1.08 per hundredweight on unshorn lambs sold or slaughtered in 1977. Oregon growers will get an additional \$137,941 in unshorn lamb payments. This payment is to compensate growers for wool on live lambs they market. The payment is based on the shorn wool payment rate, the average weight of wool per hundredweight of lambs, and the price of lamb's wool relative to the national average price for shorn wool.

Deductions of 1 1/2 cents per pound from 1977 shorn wool payments and 7 1/2 cents per hundred pounds of liveweight from 1977 lamb payments will be made to finance advertising, sales promotion and related market development activities. These deductions, provided for in the National Wool Act of 1954, were approved by an 85.5 per cent favorable vote by sheepmen voting in a November 1974 referendum.

THRIFTWAY SUPER SAVINGS

PLAN A COOK-OUT WITH OUR GREAT MEAT BUYS



"LET OUR FAMILY SERVE YOUR FAMILY"



AGAR SMOKED PICNICS
6 TO 8-LB. AVERAGE WATER ADDED

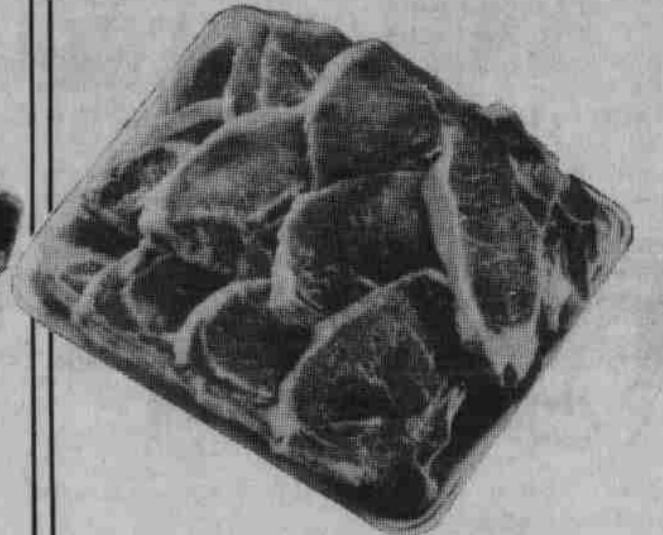
WHOLE LB.

69¢ SLICED 89¢ LB.



BEEF BLADE CHUCK STEAK
GREAT BUDGET STRETCHER USDA CHOICE BEEF

89¢ LB.



PORK LOIN QUARTER
SLICED, MIXED CHOPS & STEAKS CUT FROM 17-20 LB. LOINS

\$12.9 LB.

- BONELESS BEEF CHUCK ROAST USDA Choice lb. **\$1.39**
- PORK RIB CHOPS lb. **\$1.89**
- EXTRA LEAN FRANKS Bar-S, Beef or Regular, 1-lb. Pkg. lb. **\$1.49**
- CHUNK BRAUNSCHWEIGER Or Liverwurst, Bar-S, 12-oz. Pkg. ea. **98¢**
- BAR-S SLICED BACON Regular or Thick Sliced, 1-lb. Pkg. lb. **\$1.69**
- BONELESS BEEF STEW MEAT USDA Choice lb. **\$1.49**
- SWIFT'S SIZZLEAN New Breakfast Treat, 12-oz. Pkg. ea. **\$1.59**
- DINNER FRANKS Armour's, Beef or Regular, 2-lb. Pkg. ea. **\$2.69**

Check our Bonus Specials this week for super savings on many of your favorite brands and products. Look for the Bonus Special signs throughout the store. And while you're saving money, save even more on our super beef, pork, and turkey specials. Why not let our family help you plan a bar-b-que for your family?

PRICES EFFECTIVE 7 FULL DAYS
**APRIL 19 THRU
APRIL 25, 1978**

We Reserve the Right to Limit Quantities

SLAB BACON
BY THE PIECE
\$1.19

BEEF CROSS RIB ROAST
BONELESS, USDA CHOICE BEEF
\$16.9 LB.

COUNTRY STYLE SPARE RIBS
A FAMILY FAVORITE
\$13.9 LB.

BONUS SPECIAL SAVINGS

- KRAFT LO-CAL DRESSING Assorted Flavors, 8-oz. 49¢
- KRAFT MAYONNAISE 32-oz. Size. \$1.25
- MASHED POTATO BUDS Betty Crocker, 16.5-oz. size. 99¢
- CRANAPPLE DRINK Ocean Spray, 48-oz. Size. 99¢
- MJB RICE MIXES Assorted Flavors, 6-oz. Size. 45¢
- FLUFFO SHORTENING 3-lb. size. \$1.69
- KIMBIE DAYTIME DIAPERS Ex. Absorbent 24's Throwaways, 30's. \$2.49
- HEFTY TRASH BAGS Super Weight, 2 Mil 30-Gal. Size, Pkg. of 15. \$2.09

EXTRA CLEANING VALUES

- DAWN DISHWASHING DETERGENT Liquid 22-oz. **79¢**
- WESTERN SHORES BLEACH Gal. 55¢
- DIAL BATH SOAP White, Pink or Golden, 5-oz. Size. 3/99¢

Have a Great Day with **THRIFTWAY**



MEADS THRIFTWAY — 305 S.W. 11th Ave., Hermiston — 711 N. Street, Umatilla

FRESH DAIRY SPECIALS

COTTAGE CHEESE
WESTERN FAMILY LARGE, SMALL CURD OR SLEEK, 16-OZ. SIZE **49¢**



- DARIGOLD SOUR CREAM, PINT 69¢
- KRAFT AMERICAN SINGLES STACK PACK, 16-oz. \$1.59
- PILLSBURY COOKIES, ASSORTED VARIETIES To 18-oz. 89¢

THRIFTWAY DISCOUNT NON-FOODS

HOUSEHOLD NEEDS
• 15 QT. RECTANGULAR DISH PAN
• 11 QT. DELUXE PAIL
• BUCKET OF SPONGES
• 6" x 8" CLEANING MITT, WASHABLE FUR
YOUR CHOICE . . . **99¢**

CUSTOM BUSINESS FORMS & STATEMENTS
676-9228

Sell Your Unused Items With A Classified
676-9228

