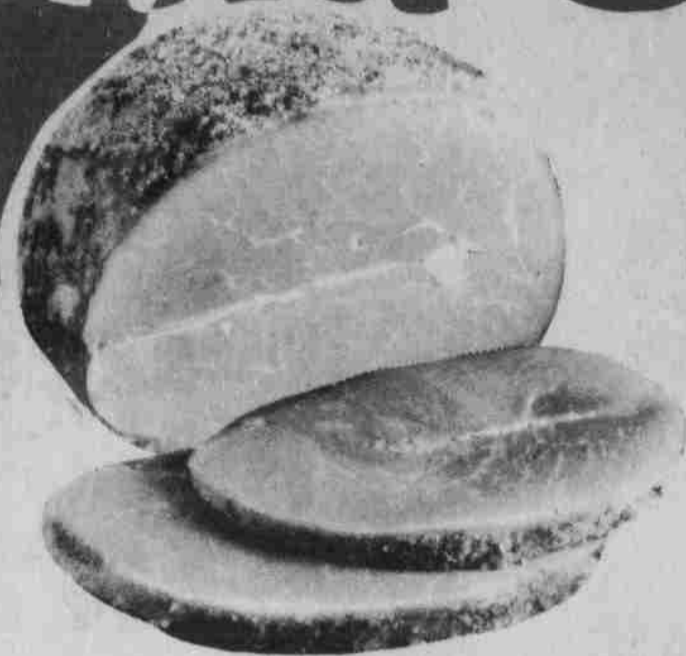


Grand Opening

**2nd
BIG WEEK**

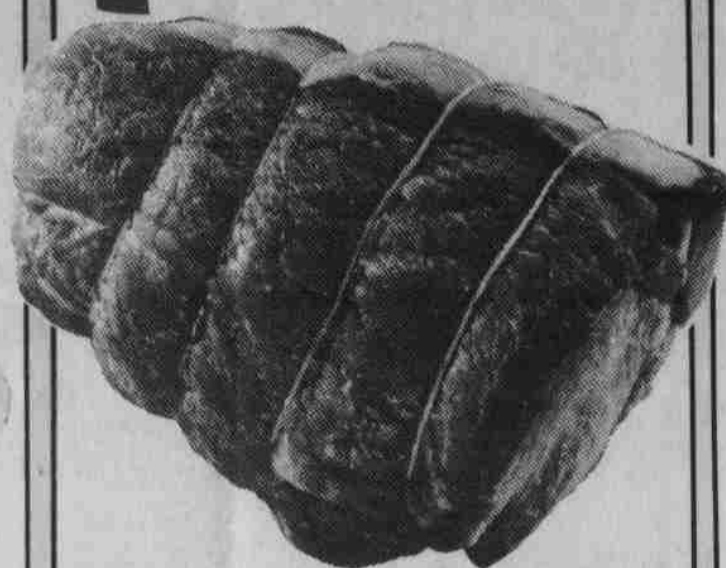
**MEAD'S
HERMISTON
& UMATILLA
THRIFTWAY**



BONELESS HAMS

WESTERN FAMILY
5-9 LB. AVG., WATER ADDED

\$16.3 LB.



BEEF SIRLOIN TIP ROAST

BONELESS
USDA CHOICE BEEF

\$14.9 LB.



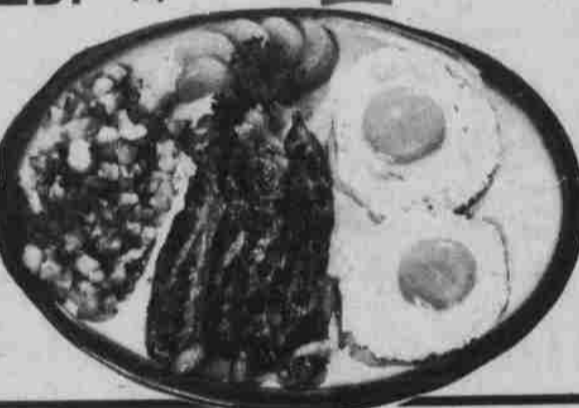
BONELESS PORK BUTT ROAST

FRESH
EASTERN PORK

\$10.9 LB.



- BONELESS HAMS Armour's Speedi Cut, Halves, 3-Lb. Avg., Water Added Lb. **\$2.19**
- BONELESS HAMS Holiday Halves, 3-4 Lb. Avg. Lb. **\$2.69**
- GRADE A TURKEYS 11-23-Lb. Avg. Lb. **69¢**
- TURKEY HAMS Blue Ribbon, Boneless, 2-3 Lb. Avg., Low Fat Lb. **\$1.49**
- DINNER FRANKS Armour's Star, 2-Lb. Pkg. Ea. **\$2.69**
- HORMEL CURE 81 HALF HAMS 3-Lb. Avg Lb. **\$2.59**



EASTER BREAKFAST FAVORITES

- SLICED BACON Armour's 1-Lb. Pkg. Lb. **\$1.59**
- PORK LINK SAUSAGE Hill's Fresh Lb. **99¢**
- SWIFT'S SAUSAGE Brown & Serve, Breakfast, 8 Varieties, 8-Oz. Pkg. Ea. **\$1.05**
- BEEF TOP SIRLOIN STEAKS Thin Steaks, USDA Choice Lb. **\$2.99**
- HAM SLICES Western Family, Thick or Thin Cut, Water Added Lb. **\$1.89**

PORK BLADE CUT STEAKS

FRESH EASTERN PORK

\$11.9 LB.

BEEF SIRLOIN TIP STEAKS

BONELESS USDA CHOICE BEEF

\$16.9 LB.

TURKEY BREASTS

GRADE A 4-6 LB. AVERAGE ALL MEAT, NO WASTE

\$12.9 LB.

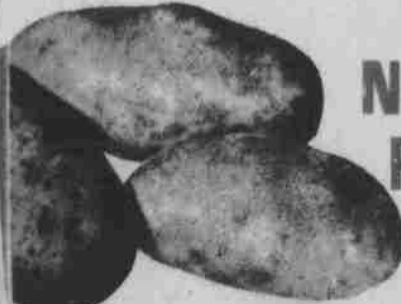
THRIFTWAY FRESH PRODUCE



NO. 1 ALL GREEN ASPARAGUS

69¢ LB.

FROM CALIFORNIA, SERVE PLAIN OR FANCY



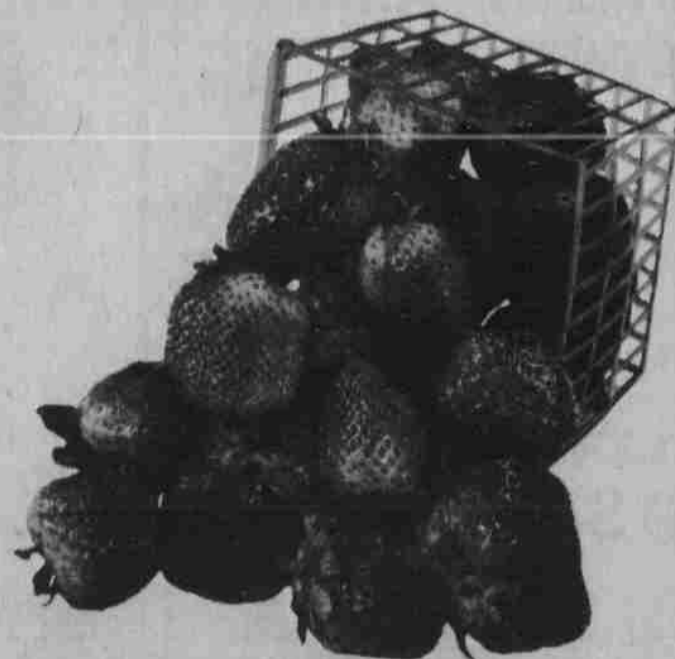
NO. 1 WASH. POTATOES

67¢ 10-LB. BAG



HAWAIIAN PINEAPPLE

29¢ LB.



STRAWBERRIES FRESH-RED-RIPE

12-OZ. CUP **59¢** EACH

- LARGE SIZE LEMONS 3 For **35¢**
- RED RIPE CHERRY TOMATOES 12-Oz. Dry Pint Ea. **49¢**
- REGULAR OR SALTED PEANUTS 1-Lb. Bag Ea. **89¢**

DAFFODILS
HOME GROWN, 10 STEMS TO A BUNCH, FRESH FROM THE FIELDS

3 \$1 FOR