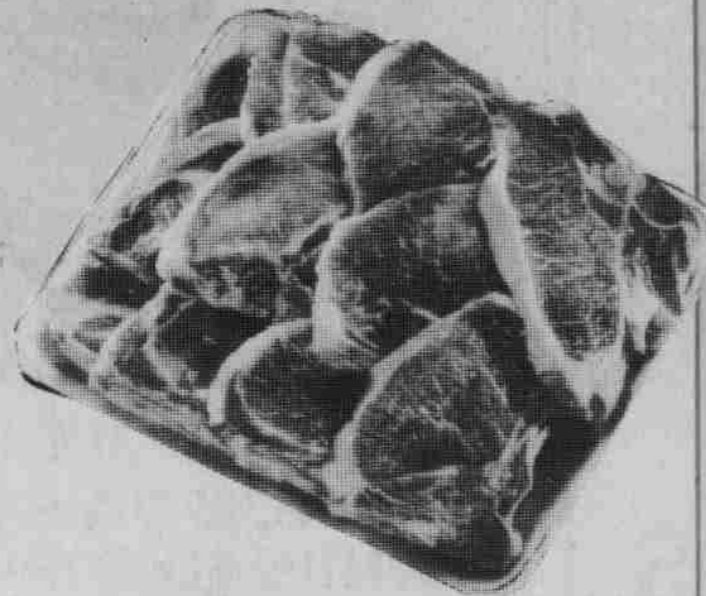


Grand Opening

MEAD'S
HERMISTON
& UMATILLA
THRIFTWAY



**PORK LOIN
QUARTER SLICED**
MIXED CHOPS AND STEAKS
CUT FROM 17-20 LB. LOINS

\$11.9

LB.

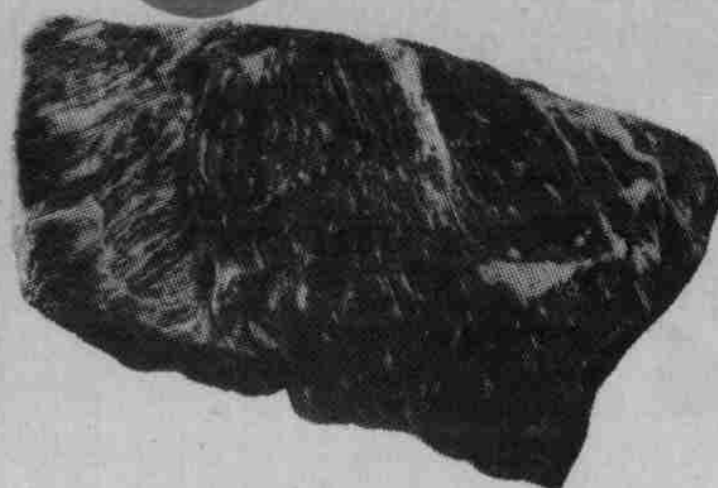


USDA
CHOICE

**BEEF RIB
STEAKS**
6-INCH CUT
USDA CHOICE BEEF

\$18.9

LB.



**CORNE BEEF
BRISKETS**

KNEIP'S, SERVE CORNE BEEF
AND CABBAGE THIS
ST. PATRICK'S DAY

\$10.9

LB.



SMOKED
PICNICS

75¢

Lb.

Sliced & Tied 85° Lb.

- BEEF PATTIES** Shur-Tenda Lb. **\$1.09**
- PORK SPARERIBS** Country Style . . . Lb. **\$1.29**
- BEEF RIB ROAST** Large End, USDA Choice Lb. **\$1.79**
- FRANKS** Hygrade's Ball Park, Beef or Regular, 1-Lb. Pkgs. . . . Ea. **\$1.39**
- BOLOGNA** Sliced, Morrell, Regular or Thick, 1-Lb. Pkgs. . . . Ea. **\$1.39**
- VARIETY PACK** Oscar Mayer Beef or Round 12-oz. Pkgs. . . Ea. **\$1.59**
- BACON** Sliced, Bar-S, Regular or Thick, 1-Lb. Pkgs. . . . Ea. **\$1.59**
- WRANGLERS** Hormel, 1-lb. Pkgs. Ea. **\$1.79**



CHIPPED MEATS
BUDDIG'S, CHOICE OF 4 VARIETIES
3-OZ. PKG.

3 \$1

FOR

**FRESH PORK
RIB CHOPS**
CUT FROM 17-20 LB. LOINS

\$13.9

LB.

**BEEF TOP
ROUND ROAST**
BONELESS, USDA CHOICE BEEF

\$15.9

LB.

**FRESH
OYSTERS**
MEDIUM SIZE, 10-OZ. JAR

\$11.9

EA.



**RED, RIPE
TOMATOES**

SALAD
SIZE

4 \$1

LBS

- CALIFORNIA SPINACH Bunch Ea. **39¢**
- CALIFORNIA CARROTS 2-Lb. Bag Ea. **49¢**
- FLORIDA RED POTATOES Lb. **19¢**
- LARGE SIZE PAPAYAS Ea. **69¢**



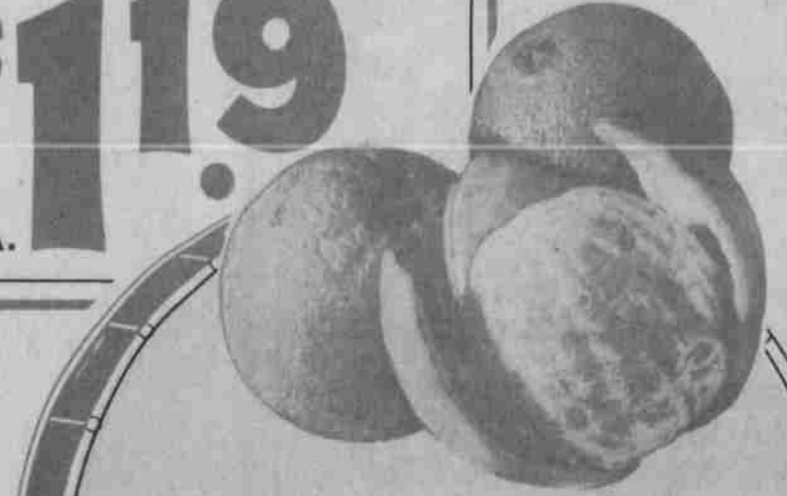
CAULIFLOWER
SNOW WHITE HEAD

49¢

LB.



FRESH MUSHROOMS Lb. **\$1.39**



ORANGES
EXTRA LARGE
CALIF. CHOICE NAVELS

6 \$1

LBS.