

Unique county homes toured by university women's group

Group visits five homes in county

FIVE UNUSUAL HOMES VISITED BY GROUP

By Justine Weatherford
Between 9 a.m. and 3:45 p.m. last Saturday, April 2, A.A.U.W. members and invited guests toured five unusually interesting homes in Morrow County.

The Heppner tourists left the public library parking area in private cars, were joined by ladies from around Ione and Lexington and proceeded to Boardman. There they were shown through the restored railroad depot home of Mr. and Mrs. Rupe Kennedy just northeast of the town core.

The Kennedy restoration has been described by many journalists and is included in a book and a film. Mrs. Kennedy showed their delightful antiques, told how and where they were acquired, demonstrated how they had been skillfully adapted to practical use, and answered many questions.

A few of the more appealing adaptations abounding in this fascinating home are the use of the old depot counter in the central office, the use of a trundle-bed as a double-sided, swinging sofa in the family room-dining area, the use of several old, cast-iron-legged,

multi-drawer sewing machines, the use of a small wood stove purchased at an Ione auction in Mrs. Kennedy's cozy office, the continued use of the big, barn-style, depot's loading platform door as a wind break which is pulled over their large dining area window when the west wind and accompanying dust roars up the Columbia.

A central feature of the home is the large, bricked, two-faced fireplace.

The Kennedy landscape and river view are special. The depot cupola has become a corner ornament for their glass-insulator-decorated

fence. The home is warmed and brightened by carefully selected colors and by the inclusion of stained glass windows and unusual, old gas and kerosene lighting fixtures.

Rhea Creek Stop

From Boardman, the ladies drove to lower Rhea Creek to the old Mason-Pettyjohn Ranch, now the home of the Mark Murrays. Mrs. Murray showed the women through the large, old barn building which has become a spacious, colorful, practical and unique home.

This home's large living areas, carpeted with oranges and its unusual, large loft space which is used as a studio and children's play area, are so special. The Murrays have continued to use the original barn doors at three corners of their home.

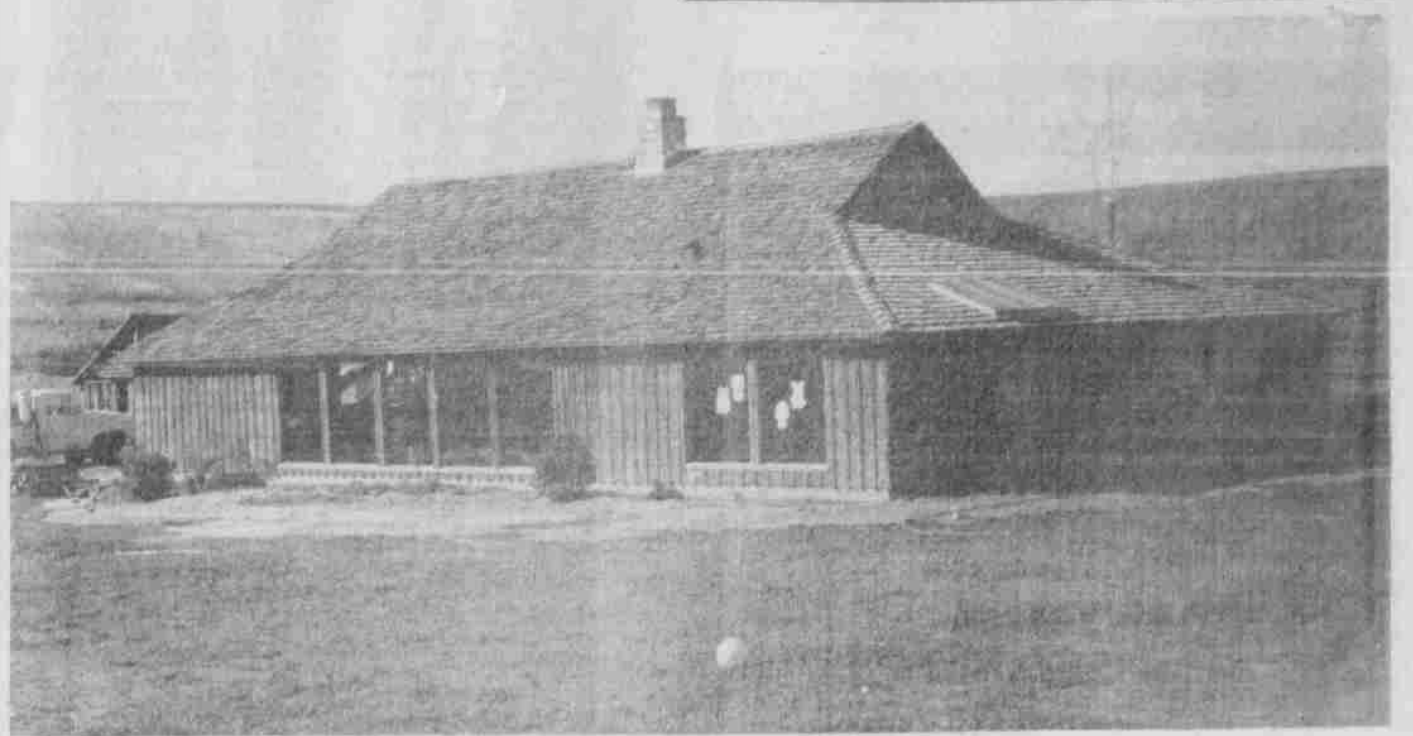
Their large central fireplace has an unusual mantel. Old boards and timbers have been used in parts of their high, beamed, slanted ceilings. Much of the house is furnished with especially selected heavy pine furniture.

One feature that drew special interest was Mark's rustic, wood-walled shower. Like the Kennedys', the Murrays' kitchen features a chopping block table.

At Piper Canyon

The third stop was in Piper Canyon, south and east of Lexington, at the restored Rufus Piper ranch home of Mr. and Mrs. Dennis Doherty. Mrs. Doherty explained that they love old things, especially family and local antiques, but she opted for an all new kitchen, which is big, golden and so practical.

Off the kitchen with its serving-bar counter are a small laundry room and Anne's B.M.C.C. office, and an attractive dining area which can have extra heating from the family-antique Franklin stove in its brick-walled corner. The Doherty living room features a large bay window and is connected to the spacious, fireplace-centered den by sliding French doors. This home's large downstairs bathroom and its up-



Pictured here is the Mark Murray home on lower Rhea Creek near Ione. The spacious home was converted from an old barn featuring the original barn doors at three corners of the house. The large loft space is used as a studio and children's play area.

stairs bath and extra shaving closet are unique. The upstairs includes a large cedar-paneled, high-ceilinged hall and three spacious, large-closeted bedrooms. Each bedroom has a window-lighted loft above it. Daughter Lisa has the east room, son Ben the south room, and the master bedroom to the west opens to a balcony-porch on its south side.

This home has several first-floor porches. Its exterior is painted Wedgewood blue with white trimming. Like the Murrays' home, the Doherty home has an attached root cellar.

After lunching there and holding their April meeting, the ladies drove to Heppner to view two new homes.

Heppner Tour

The Allen Nistads were generous in letting the group go through their home in their absence. The A.A.U.W. President, Linda Johnson, led this tour and read from notes that Mrs. Nistad had given her about the materials and features incorporated into this large "almost all wood" home in a fine view position on Heppner's east hill.

It was explained that the architect planned to leave the great views from three sides completely open and thus arranged the kitchen without any high cupboards but with a great deal of convenient, undercounter storage.

The ladies admired the central utility room, the large dining areas and the two family-living room areas. The fireplace-centered larger living room in the southwest side and the smaller living area to

the east-south both open to a large deck.

This three-bedroom home includes an office, a spacious entrance and central hall and beautiful baths and dressing-room closets. The opaque doors opening off the hallway are different and very practical. The darker ceilings and the colorful, appropriate furnishings and the unusual decorative accessories were much admired.

The touring group's final stop was at the new, stone-trimmed ranch-style home of Mr. and Mrs. Leroy Gardner, which sits against the south hill near the Three Mile corner east of Heppner. It was built by a local builder, John Wood.

Mrs. Gardner let the visitors into the home through the patio doors which join the living room to a large, protected, cement patio at the back of the house. Near the doors, there is a pass-through from the kitchen counter which, she explained, is such a convenience for this couple that enjoys dining outside so much.

The living room has a beautiful fireplace on its west wall which is backed by a fireplace in the less formal family room that joins the kitchen and dining space. The Gardners have selected an especially attractive davenport for their living room, which drew much praise. The furniture in the comfortable, north-windowed family area is leather covered. Off the kitchen-family area, a hallway leads to the over-size double garage and includes storage space for their freezer and other household items.

Mrs. Gardner says she is very happy with her kitchen cupboard arrangement and with the appliances they chose.

To the east of the central living room are three light, large bedrooms, joined by a nice, wide hallway. Off the master bedroom, the bathroom suite contains a stacked washer and dryer. The home's second bathroom backs the master bath and serves the two guest bedrooms toward the back of the house.

The Gardners love earth tones and use browns, golds, greens and orange throughout their rooms. Although their

home has three outside entrances, they and their guests will undoubtedly use the patio entrance the most, as it is most convenient to their car parking space.

This country home, like the other four homes included on the Saturday tour, offers a fine vista of Morrow's landscape. These fine homes definitely show some wise choices in arrangements and building techniques, or rebuilding techniques, and in tasteful decoration. They should give the whole of Morrow County a reputation as a place where people love attractive homes.

Public Notices

NOTICE OF ELECTION

Upon the question of levying a tax outside the 6 per cent limitation and election of Directors and local committee members.

NOTICE IS HEREBY GIVEN that an election will be held on April 19, 1977 between the hours of 8:00 a.m. and 8:00 p.m.

The reasons for such election are to:

1. Submit to the voters of the district the question of levying a tax for the year 1977-78 outside the 6 per cent limitation in the amount of \$1,711,803 for the purpose of furnishing funds for the operation and maintenance of the Morrow County School District which cannot be furnished within the current tax base of \$494,126.
2. Elect a district director from Zone VII.
3. Elect advisory committee representatives to the Heppner-Lexington Advisory Committee; the Ione Advisory Committee; and the Boardman-Irrigon Advisory Com-

mittee.

Polling places will be: Heppner Elementary School, District Office at Lexington, Ione High School, A.C. Houghton Elementary School and Riverside High School.

-s-Sadie Parrish County Clerk

-s-John Matthews Chairman, Board of Directors

Published Mar. 24, Apr. 7, 1977.

NOTICE OF PUBLIC HEARING

Pursuant to ORS 477.250, notice is hereby given that public hearings will be held for the purpose of providing all owners of lands an opportunity to be heard on matters pertaining to the budgeting of monies required to defray the cost of fire protection and suppression within the boundaries of the Eastern Oregon Fire Protection District and for privately owned lands in Baker, Crook, Deschutes, Gilliam, Grant, Harney, Hood River, Jefferson, Malheur, Morrow, Umatilla, Union, Wallowa, Wasco and Wheeler counties within the boundaries of the Deschutes, Malheur, Mt.

Hood, Ochoco, Umatilla and Wallowa-Whitman national forests.

Hearings will be held at the following places: West Central Oregon Division, Tuesday, April 12, 1977, 10 a.m., at The Dalles Division headquarters, The Dalles, Oregon

West Central Oregon Division, Monday, April 18, 1977, 10 a.m., at Prineville Division headquarters, Prineville, Oregon

Northeast Oregon Division, Friday, April 22, 1977, 2 p.m., at LaGrande Division headquarters, LaGrande, Oregon

East Central Oregon Division, Thursday, April 21, 1977, 2 p.m., at John Day Division headquarters, John Day, Oregon

Copies of this budget may be inspected at the Eastern Oregon Forest Protection District offices at John Day, Prineville, The Dalles and LaGrande, Oregon.

OREGON STATE DEPARTMENT OF FORESTRY
J.E. SCHROEDER,
STATE FORESTER
Published Mar. 31, Apr. 7, 1977.

S T U B

TO BE TORN OFF BY A MEMBER OF THE ELECTION BOARD

Ballot No. _____

SAMPLE BALLOT

MORROW COUNTY SCHOOL DISTRICT #1, MORROW COUNTY, OREGON

TAX LEVY OUTSIDE THE CONSTITUTIONAL LIMITATION

TUESDAY, April 19, 1977

Polls Open 8:00 A.M. to 4:00 P.M.

The voter shall place an (X) or check mark (✓) in the voting square before the word YES or the word NO, whichever indicates his choice.

PROPOSAL

Shall the Board of Directors of Morrow County School District No. 1, Morrow County, Oregon, be authorized to levy for the fiscal year 1977-78, the sum of \$1,711,803 outside the limitation set forth in Section II, Article XI of the Oregon Constitution.

Without the approval of the voters, the school board has authority to levy only the tax base of the district, which is \$494,126. This sum, together with available non tax revenues, is not adequate to meet the operating needs of the schools.

Because the tax base is inadequate, it is necessary to submit to the voters, on an annual basis, a tax levy request in excess of the tax base. The tax base would not be sufficient to operate the schools for a full school year.

If approved, the operating budget to be financed by local tax for the year 1977-78 will be \$318,723 greater than for the preceding year.

Reasons for increasing the levy are: Increases in salaries, fixed costs, employee benefits, costs of textbooks and supplies, costs of services and materials, costs for increased student enrollment and of equalizing the educational opportunity in the district.

- YES, I vote for the tax levy
- NO, I vote against the levy

EASTER VALUES



GAF Color Print or Kodacolor Film

12-EXPOSURE

Our \$ 2³⁹
Price

20-EXPOSURE

Our \$ 3⁶⁹
Price



BEAUTIFUL

8"x10 COLOR ENLARGEMENTS

From your favorite color Negs or Slides

with FREE!

Deluxe Decorator Frame

\$ 2³⁹

OUR PRICE ...

(Offer good between April 7-13)



GAF

Murray's Drug

HEPPNER OREGON

Specials from

Court St. Market

Oregon Chief Bone in Hams
Shank 1/2 or whole 1.29 lb.
or Butt 1.35 lb.
Oregon Chief Boneless
Cooked hams 1.79 lb.
Turkeys 10-14 lbs. .69 lb.

Lynden
Hash brown potatoes 2 lb. pkg. 2 for .75
Higgin Brothers
Eggs med. grade AA .72 doz.
Paas

Easter egg color kits .69

Celery .35
Lettuce 3 for .89

Yams 4 lbs. \$1.

Potatoes 10 lb. bag .69

Prices effective Fri., Sat. April 8, 9

Your BankAmericard & Master Charge welcome